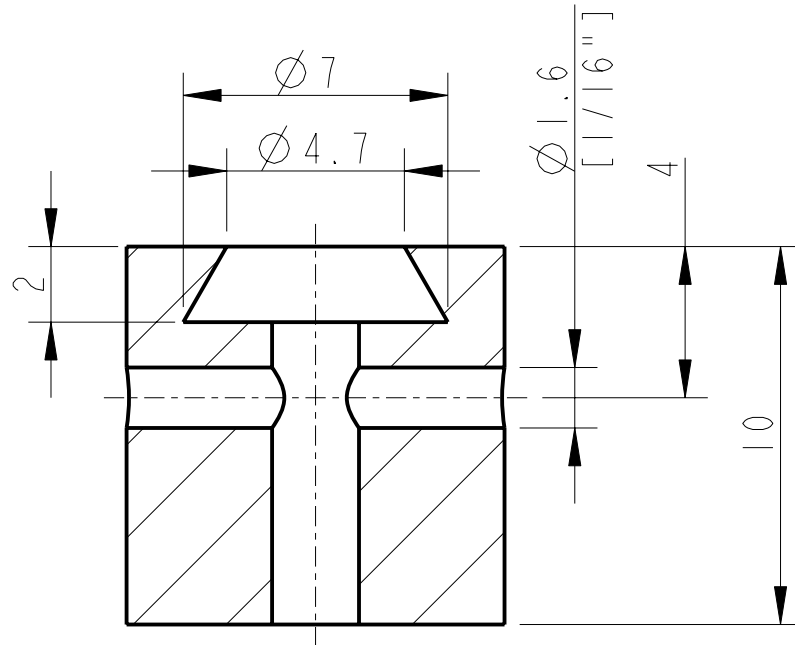
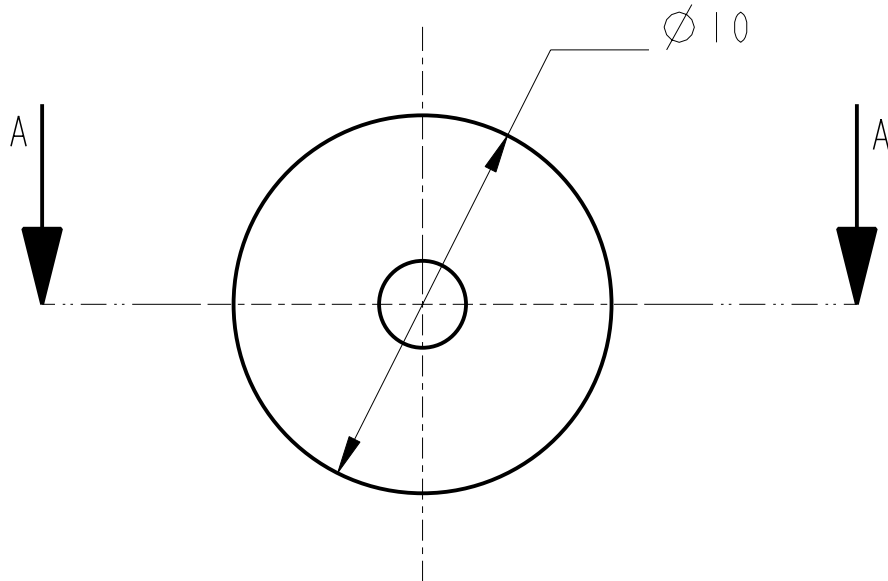


REV.	DATE	DCN #	DRAWING TREE #



SECTION A-A



ADDITIONAL NOTES:

- PART TO BE INJECTION MOLDED
- FLOUREL COMPOUND TO CONSIST OR
100 PARTS FLOUREL FC2180 OR FE5641
20 PARTS MT BLACK (N990)
3 PARTS MAGLITE (MgO)
6 PARTS Ca(OH)2
3 PARTS CaO
- WATER SOLUABLE RELEASE AGENT
TO BE USED IF REQUIRED
- MOLDED PARTS MUST BE KEPT FREE
FROM HYDROCARBONS, AND BE HANDLED
WITH CLEAN TOOLS OR CLEAN NITRILE GLOVES
- FLASH REMOVLE TO BE DONE WITH BLADE
NOT ABRASIVE
- PARTS TO BE FOIL WRAPPED

NOTES: (UNLESS OTHERWISE SPECIFIED)

- REMOVE ALL SHARP EDGES,
R.02 MIN.
- DO NOT SCALE FROM DRAWING.
- ALL MACHINING FLUIDS SHALL BE
WATER SOLUBLE AND FREE OF
SULFUR, CHLORINE AND SILICONE,
SUCH AS CINCINNATI MILACRON'S
CIMTECH 410 (STAINLESS STEEL)
- SCRIBE, ENGRAVE OR STAMP DRAWING
PARTNUMBER ON NOTED SURFACE OF
PART AND A THREE DIGIT SERIAL
NUMBER. SERIAL NUMBERS START
AT 001 FOR THE FIRST PART AND
PROCEED CONSECUTIVELY.
USE .07" HIGH CHARACTERS.
EXAMPLE: D020188- 001. A VIBRATORY
TOOL MAY BE USED.

DIMENSIONS ARE IN mm [INCHES]
TOLERANCES:

X.XX ±0.2 mm °
ANGULAR ±0.25 °

MATERIAL: FLOUREL
SEE NOTES

FINISH: AS MOULDED
Ra = -----

	NAME	DATE
DRAWN	I WILMUT	11/Dec/06
CHECKED	MB	15/MAR/10
APPROVED	JOD	15/MAR/10

CALIFORNIA INSTITUTE OF TECHNOLOGY
MASSACHUSETTS INSTITUTE OF TECHNOLOGY
1GR, GLASGOW UNIVERSITY GEO 600 GROUP
RUTHERFORD APPLETON LABORATORIES

SYSTEM **aLIGO**

SUB-SYSTEM **SUS**

NEXT ASSY **QUAD LOWER STRUCTURE**

PART NAME **EARTHQUAKE STOP
(COMPLIANT)**

SIZE **A** DRG. NO. **D060546** REV **C.**

SCALE 5:1 PROJECTION: SHEET 1 OF