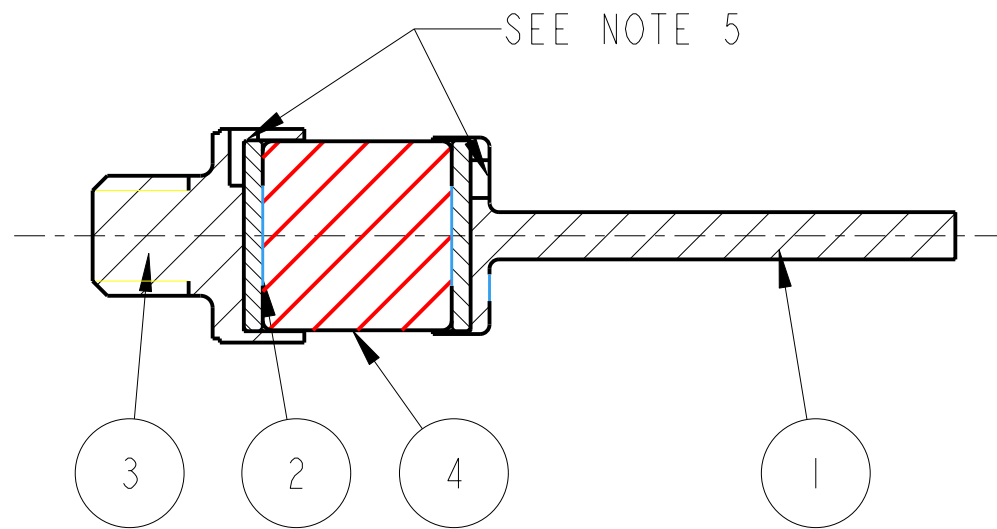
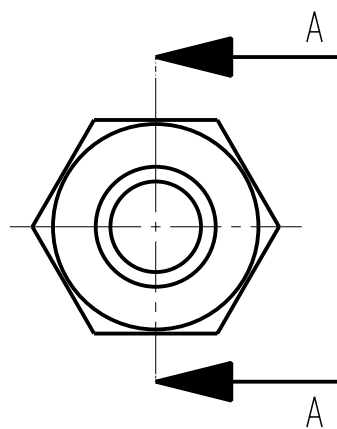
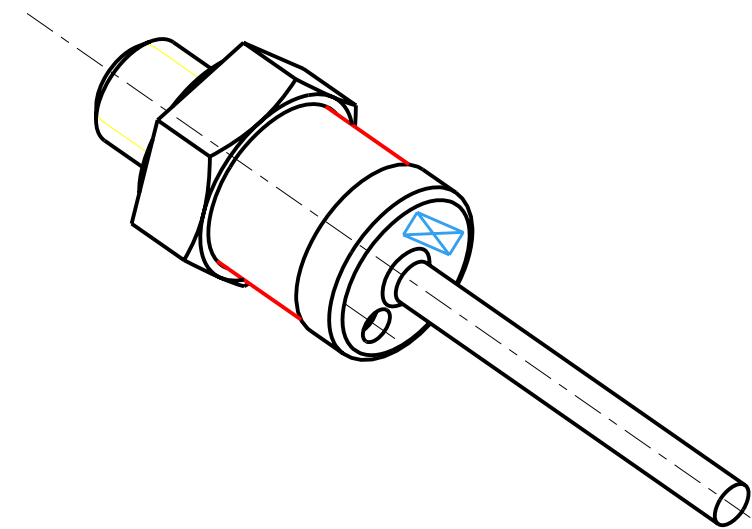


REV.	DATE	DCN #	DRAWING TREE #
A	19/OCT/06.	E060248	.
B	17/DEC/07	E060248-B	.
H	15/JULY/08	E080368	.



SECTION A-A



3-D VIEW

ADDITIONAL NOTES:

- 5. STEEL PLUGS ARE PRESS FITTED IN TO ALU AND SS PARTS
- 6. SUPPLY ALL ASSEMBLIES IN PART FORM

ITEM	QTY	SPARE	TOTAL	PART NUMBER	DESCRIPTION	MATERIALS
1	1			D060400	OSEM MAGNET FLAG; (MEGNETIC DESIGN)	ALUMINIUM: 5082
2	2			D060401	MAGNETIC PLUG; .	STAINLESS STEEL: 416
3	1			D060418	MAGNET RETAINER; (MODIFIED 1/4-20 HEX HEAD SCREW)	STAINLESS STEEL: 304/316
4	1			D0901344	10MM DIA X 10MM MAGNET; .	AS PAR SPEC: -----
PARTS LIST						

NOTES: (UNLESS OTHERWISE SPECIFIED)		
1. REMOVE ALL SHARP EDGES, R.02 MIN. 2. DO NOT SCALE FROM DRAWING. 3. ALL MACHINING FLUIDS SHALL BE WATER SOLUBLE AND FREE OF SULFUR, CHLORINE AND SILICONE, SUCH AS CINCINNATI MILACRON'S CIMTECH 410 (STAINLESS STEEL) 4. SCRIBE, ENGRAVE OR STAMP DRAWING PARTNUMBER ON NOTED SURFACE OF PART AND A THREE DIGIT SERIAL NUMBER. SERIAL NUMBERS START AT 001 FOR THE FIRST PART AND PROCEED CONSECUTIVELY. USE .07" HIGH CHARACTERS. EXAMPLE: D020188- 001. A VIBRATORY TOOL MAY BE USED.		
DIMENSIONS ARE IN mm [INCHES]		
TOLERANCES:		
X.XX ± mm		
ANGULAR ± °		
MATERIAL: AS DRAWING		
FINISH: AS DRW		
√μm [μin] Ra = -----		
NAME	DATE	
DRAWN I WILMUT	02/10/06	
CHECKED MB	15/MAR/10	
APPROVED JOD	15/MAR/10	

CALIFORNIA INSTITUTE OF TECHNOLOGY  
 MASSACHUSETTS INSTITUTE OF TECHNOLOGY  
 1GR, GLASGOW UNIVERSITY GEO 600 GROUP  
 RUTHERFORD APPLETON LABORATORIES

SYSTEM **aLIGO**  
 SUB-SYSTEM **SUS**  
 NEXT ASSY **TOP MASS QUAD**  
 PART NAME **OSEM MAGNET AND FLAG**

SIZE **B** DRG. NO. **D060416** REV **J.**  
 SCALE 5:2 PROJECTION: SHEET 1 OF 1