

8

7

6

5

4

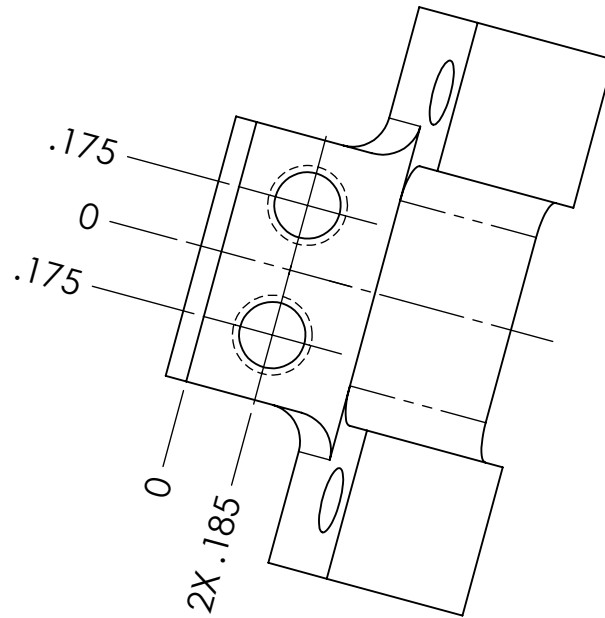
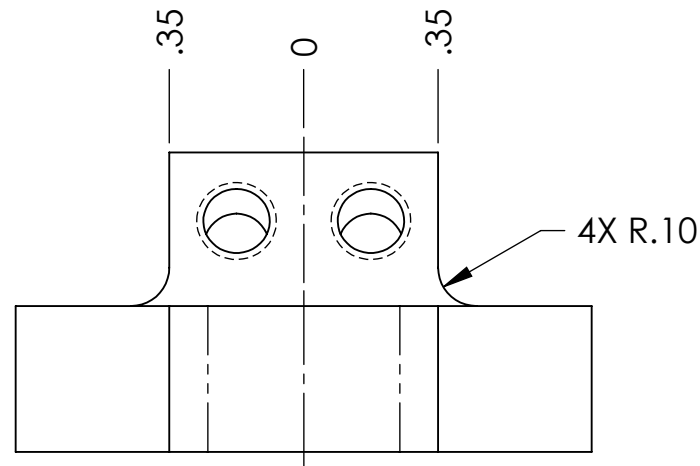
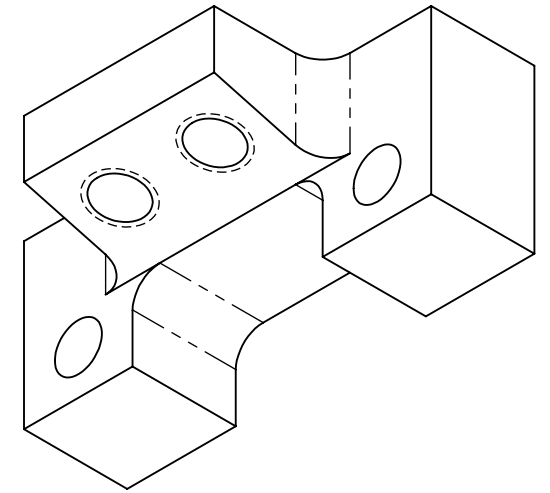
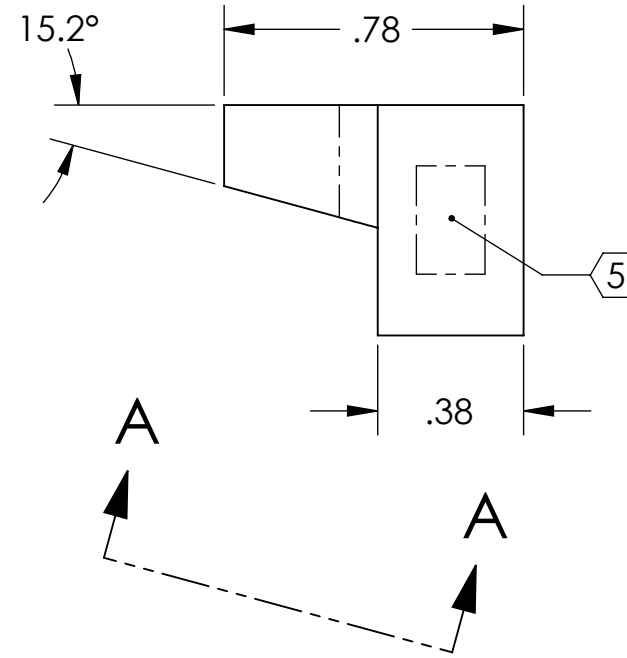
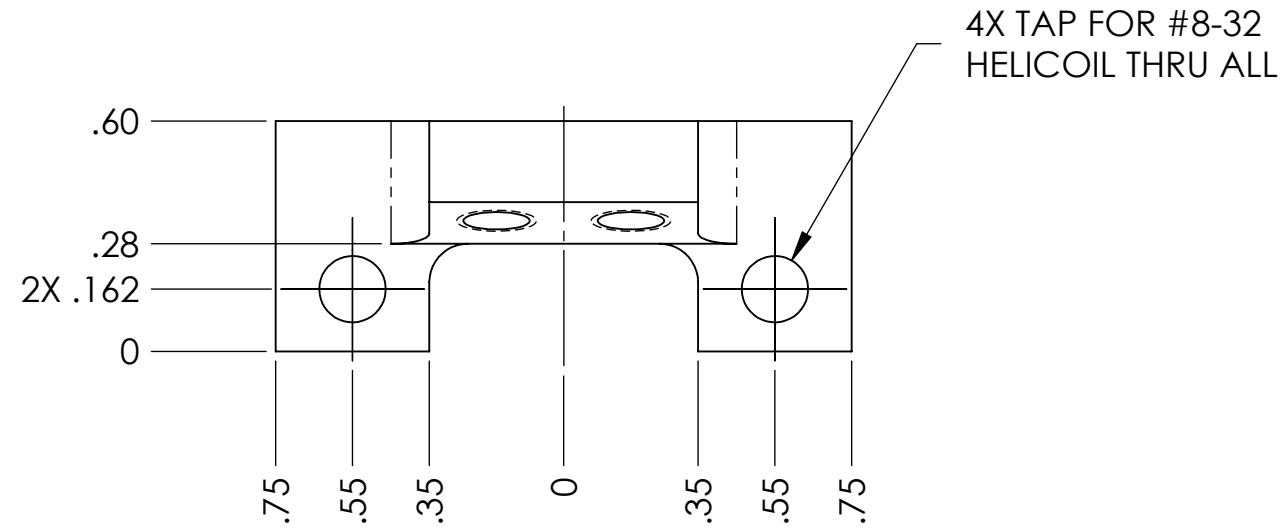
3

2

1

NOTES CONTINUED:
 5 SCRIBE, ENGRAVE, OR MECHANICALLY STAMP (NO INKS OR DYES) DRAWING PART NUMBER AND REVISION ON NOTED SURFACE FOLLOWED ON THE NEXT LINE BY A THREE DIGIT SERIAL NUMBER. SERIAL NUMBERS START AT 001 FOR THE FIRST ARTICLE AND PROCEED CONSECUTIVELY. USE .07" HIGH CHARACTERS. EXAMPLE: DXXXXXX-VY, S/N 001. A VIBRATORY TOOL MAY BE USED.

REV.	DATE	DCN #	DRAWING TREE #
v1	26 MAY 2009	E0900160	E080191
-	-	-	-
-	-	-	-



VIEW A-A

NOTES AND TOLERANCES: (UNLESS OTHERWISE SPECIFIED)

DIMENSIONS ARE IN INCHES	
TOLERANCES: .XX ± .01 .XXX ± .005	
ANGULAR ± 0.1°	
1. INTERPRET DRAWING PER ASME Y14.5-1994. 2. REMOVE ALL SHARP EDGES, R.02 MIN. 3. DO NOT SCALE FROM DRAWING. 4. ALL MACHINING FLUIDS SHALL BE WATER SOLUBLE AND FREE OF SULFUR, CHLORINE AND SILICONE, SUCH AS CINCINNATI MILACRON'S CIMTECH 410.	
MATERIAL	FINISH
6061-T6 Al	32 μinch

LIGO CALIFORNIA INSTITUTE OF TECHNOLOGY
 MASSACHUSETTS INSTITUTE OF TECHNOLOGY

SYSTEM: **ADVANCED LIGO** SUB-SYSTEM: **SUS**

NEXT ASSY: **UPPER WIRE ASSEMBLY**

PART NAME		C-CLAMP, UPPER MASS	
DESIGNER	B. KIRSNER	4 MAR 2008	SIZE DWG. NO.
DRAFTER	D. BRIDGES	26 MAY 2009	B
CHECKER	M. MEYER	28 MAY 2009	D020652
APPROVAL			REV. v1
SCALE: 2:1		PROJECTION:	SHEET 1 OF 1

D020652_Advanced_LIGO_SUS_HLTS_C-Clamp_Upper_Mass, PART PDM REV: V1, DRAWING PDM REV: V1-000

8

7

6

5

4

3

2

1