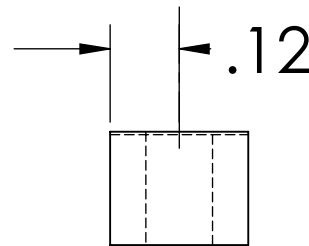
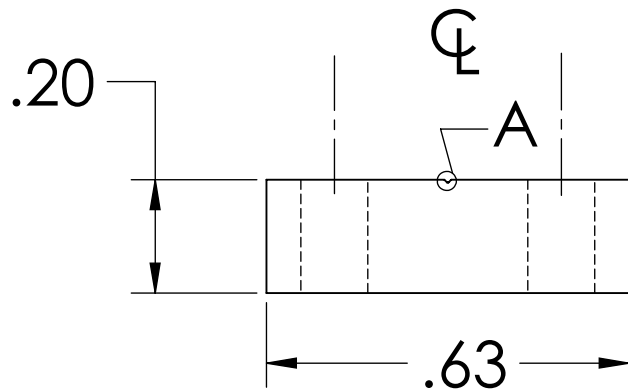
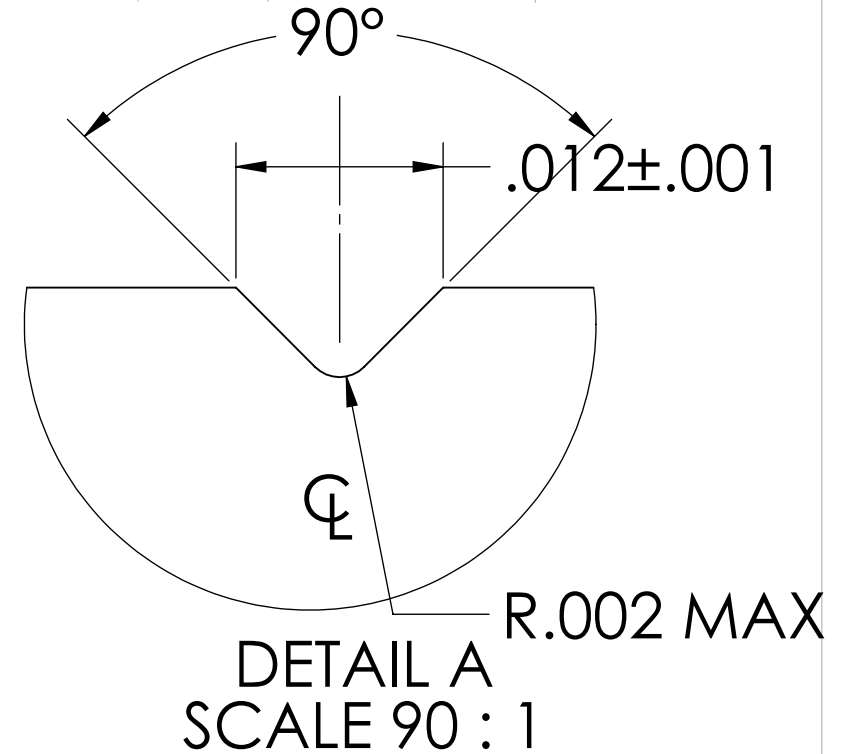
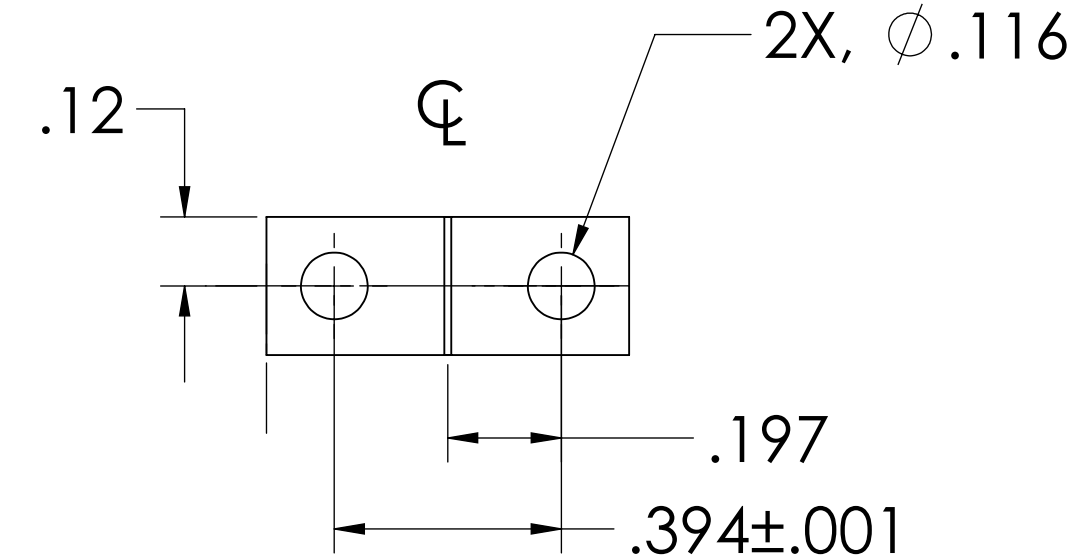



NOTES: (UNLESS OTHERWISE SPECIFIED)

1. DIMENSIONS IN INCHES

2. ALL MACHINING FLUIDS SHALL BE WATER SOLUBLE AND FREE OF SULFUR, CHLORINE AND SILICONE, SUCH AS CINCINNATI MILACRON'S CIMTECH 410 (STAINLESS STEEL)

REV.	DATE	DCN #	DRAWING TREE #
A	24th JUNE 2004	E040303-00	
v1	21 APRIL 2009	E0900107-v1	



DIMENSIONS ARE IN INCHES		NAME	DATE	 CALIFORNIA INSTITUTE OF TECHNOLOGY MASSACHUSETTS INSTITUTE OF TECHNOLOGY
TOLERANCES: .XX ±0.01 .XXX ±0.005 ANGULAR ±1°		CIT/RJ	05/02	
MATERIAL	302, 304 OR 316 SSSL	CHECKED		SYSTEM ADVANCED LIGO
FINISH				SUB-SYSTEM SUS
COMMENTS: Matching Parts: D020309 D020139 D020138				NEXT ASSY MC: UPPER MASS
				PART NAME UPPER MASS WIRE CLAMP PLATE
		SIZE A	DWG. NO. D020309	REV. v1
		SCALE: NTS		SHEET 1 OF 1