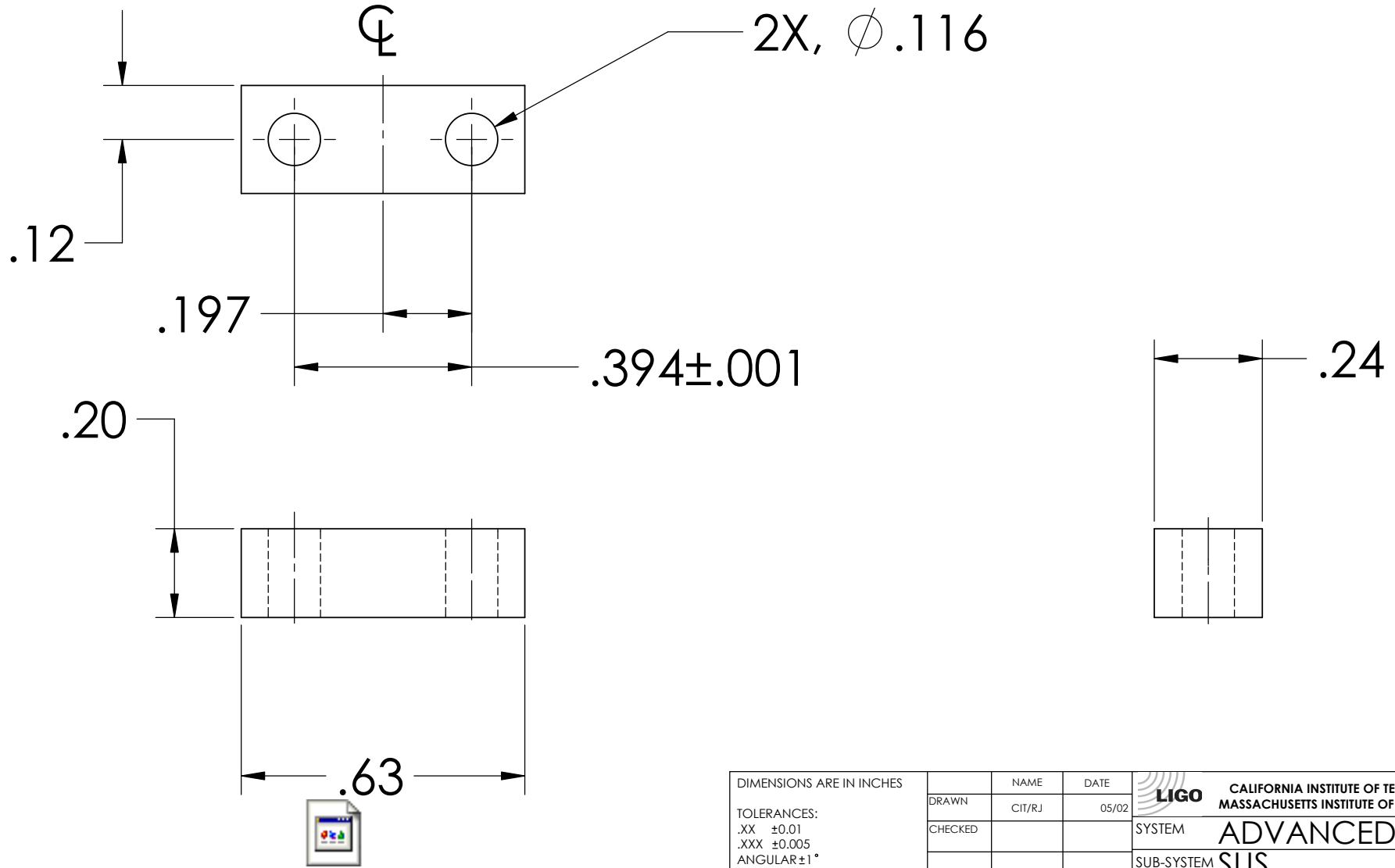


NOTES: (UNLESS OTHERWISE SPECIFIED)


1. DIMENSIONS IN INCHES

2. ALL MACHINING FLUIDS SHALL BE WATER SOLUBLE AND FREE OF SULFUR, CHLORINE AND SILICONE, SUCH AS CINCINNATI MILACRON'S CIMTECH 410 (STAINLESS STEEL)

REV.	DATE	DCN #	DRAWING TREE #
A	24th JUNE 2004	E040303-00	



D020139\_uppermasswireclampplate.step

DIMENSIONS ARE IN INCHES		NAME	DATE	 <b>CALIFORNIA INSTITUTE OF TECHNOLOGY MASSACHUSETTS INSTITUTE OF TECHNOLOGY</b>
TOLERANCES: .XX ±0.01 .XXX ±0.005 ANGULAR±1°		CIT/RJ	05/02	
DRAWN				SYSTEM <b>ADVANCED LIGO</b>
CHECKED				SUB-SYSTEM <b>SUS</b>
MATERIAL	300 SERIES STAINLESS			NEXT ASSY <b>MC: UPPER MASS</b>
FINISH		COMMENTS: Matching Parts: D020309 D020139 D020138		PART NAME <b>UPPER MASS WIRE CLAMP PLATE</b>
		SIZE <b>A</b>	DWG. NO. <b>D020139</b>	REV. <b>A</b>
		SCALE: NTS		SHEET 1 OF 1