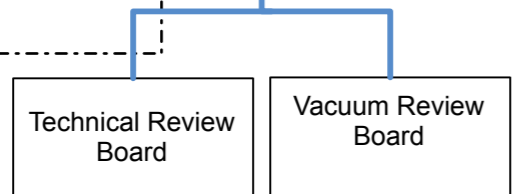
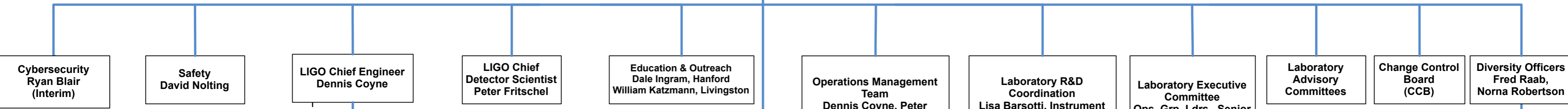
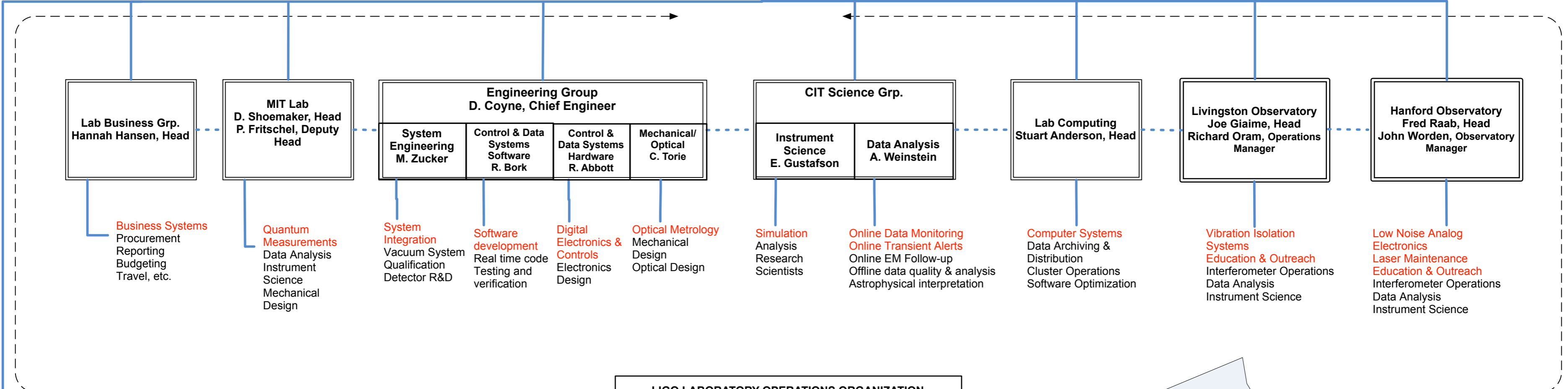


LIGO LAB DIRECTORATE
 David Reitze,
 Executive Director
 Albert Lazzarini,
 Deputy Director



ENGINEERING STANDARDS & PRACTICES



Business Systems
Procurement
Reporting
Budgeting
Travel, etc.

Quantum Measurements
Data Analysis
Instrument Science
Mechanical Design

System Integration
Vacuum System
Qualification
Detector R&D

Software development
Real time code
Testing and verification

Digital Electronics & Controls
Electronics Design

Optical Metrology
Mechanical Design
Optical Design

Simulation Analysis
Research Scientists

Online Data Monitoring
Online Transient Alerts
Online EM Follow-up
Offline data quality & analysis
Astrophysical interpretation

Computer Systems
Data Archiving & Distribution
Cluster Operations
Software Optimization

Vibration Isolation Systems
Education & Outreach
Interferometer Operations
Data Analysis
Instrument Science

Low Noise Analog Electronics
Laser Maintenance
Education & Outreach
Interferometer Operations
Data Analysis
Instrument Science

LIGO PROJECTS

Detector Commissioning
Peter Fritschel, Leader
Valera Frolov, Livingston Site Leader
Daniel Sigg, Hanford Site Leader

Detector Development Projects
Mike Zucker, Leader

40M Lab (CIT)
Rana Adhikari, Leader

LASTI (MIT)
Rich Mittleman, Leader

LIGO-India
Fred Raab, Leader

LIGO Open Science Center
Alan Weinstein, Leader

Commissioning Team

LIGO Lab Staff

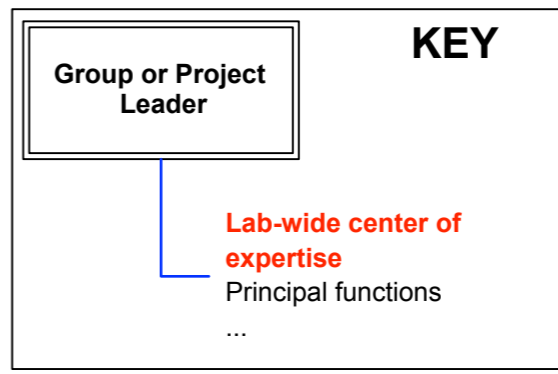
40M Staff

LASTI Staff

LIGO-India Staff

LOSC Staff

MATRIXED SCIENCE/ENGINEERING SUPPORT TO PROJECTS



LIGO Laboratory Organization Chart
 LIGO-M060092-v14
 2 June 2016