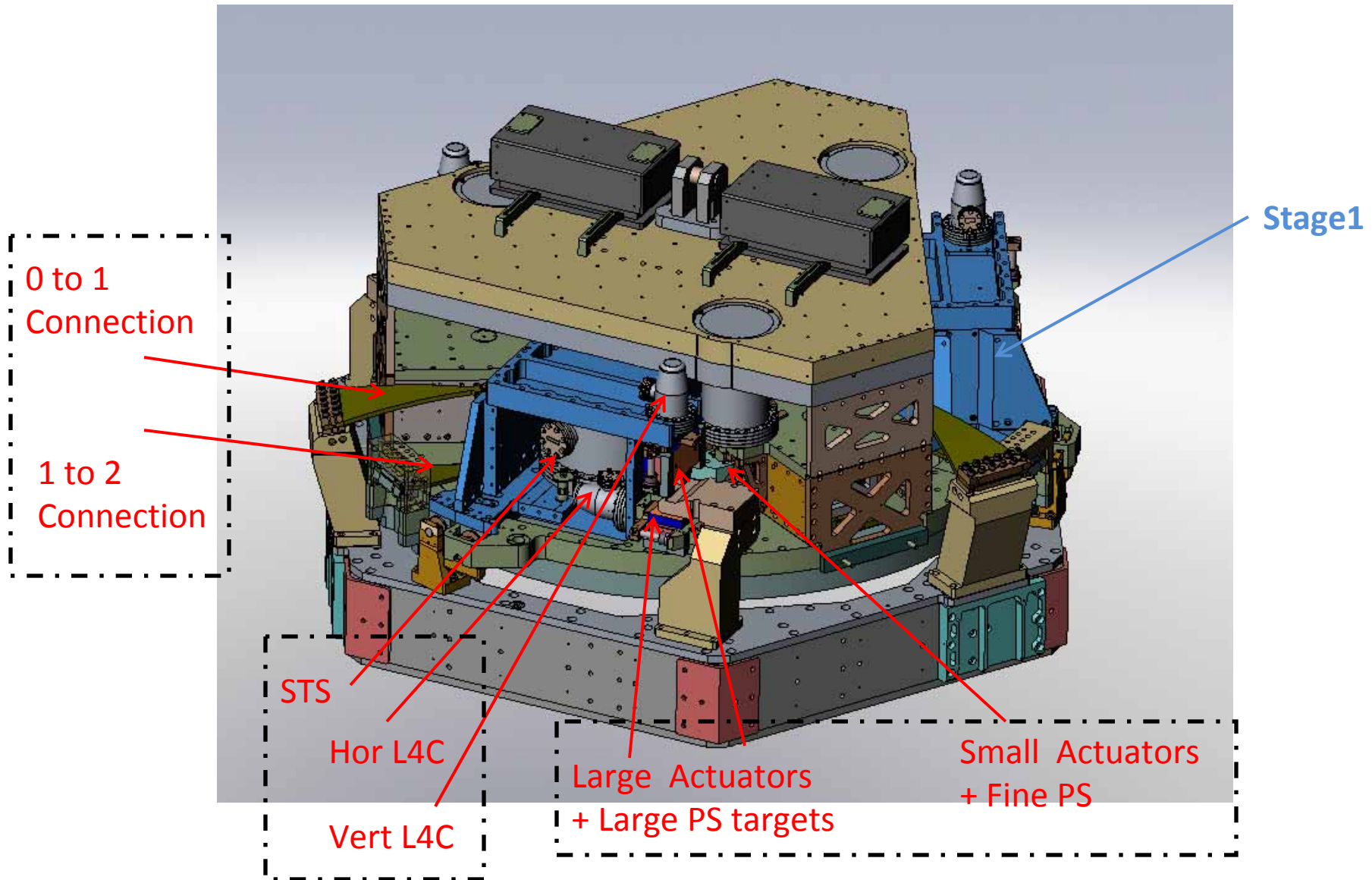
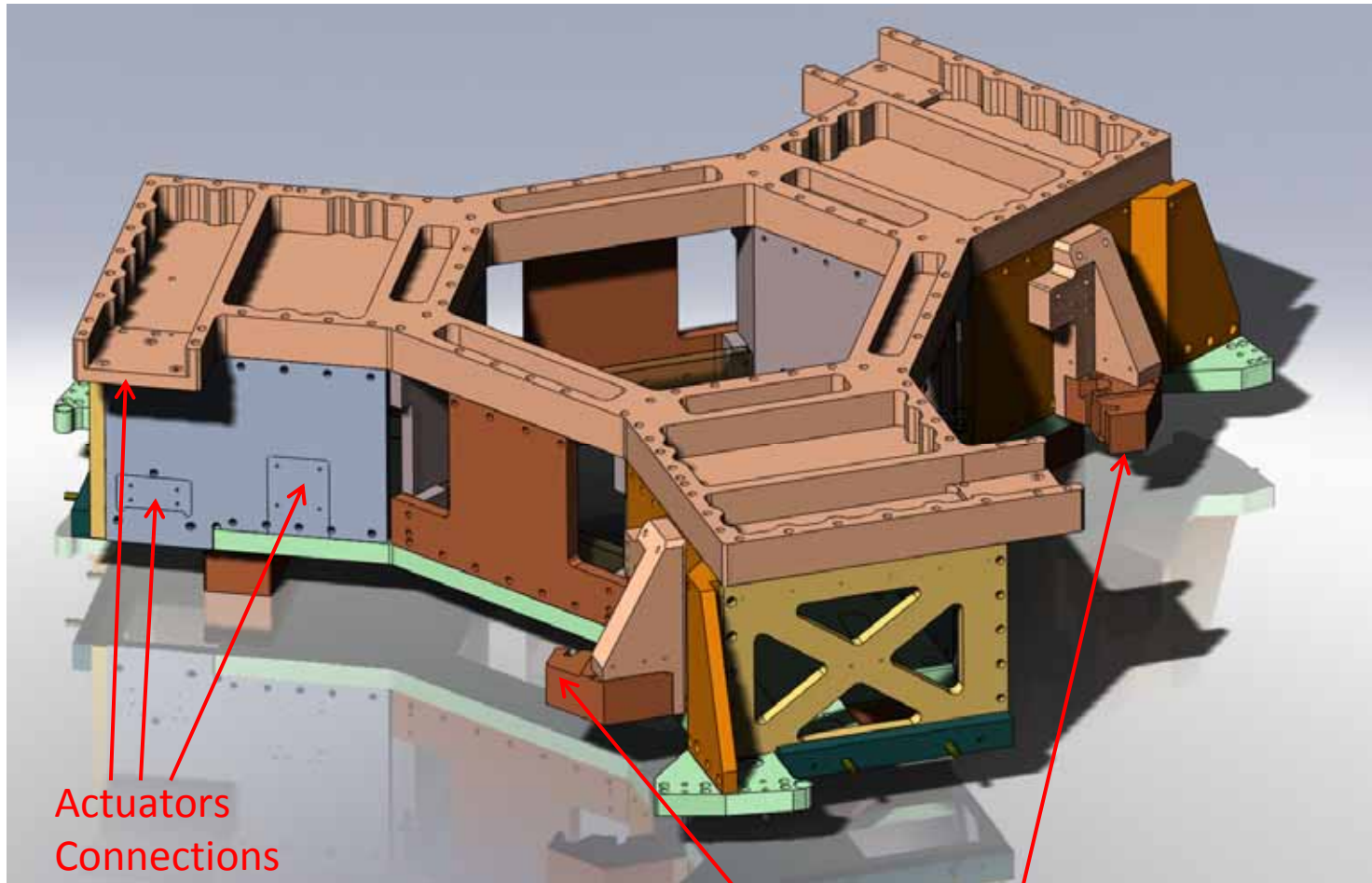


Notes for the kick off meeting on stage1



Stage 1 Structure



Actuators
Connections

Rods Connections

Few steps prior final design:

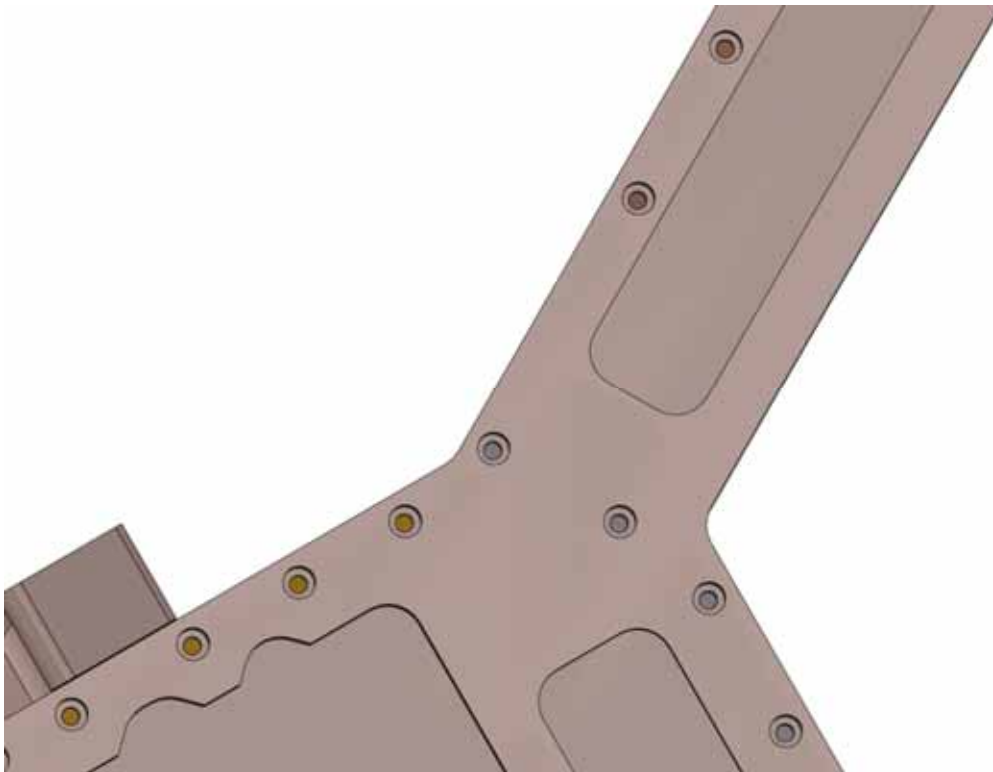
- Make decision regarding Stage 0-1 Vertical actuator
- Make a mass budget. Center of mass location.

Design adjustments

- 1. Change design list
- 2. Parts referencing: moving to plates pinning
- 3. Improve the connection between plates
- 4. Other projects integration
- 5. Trim masses shapes, positions and attachment

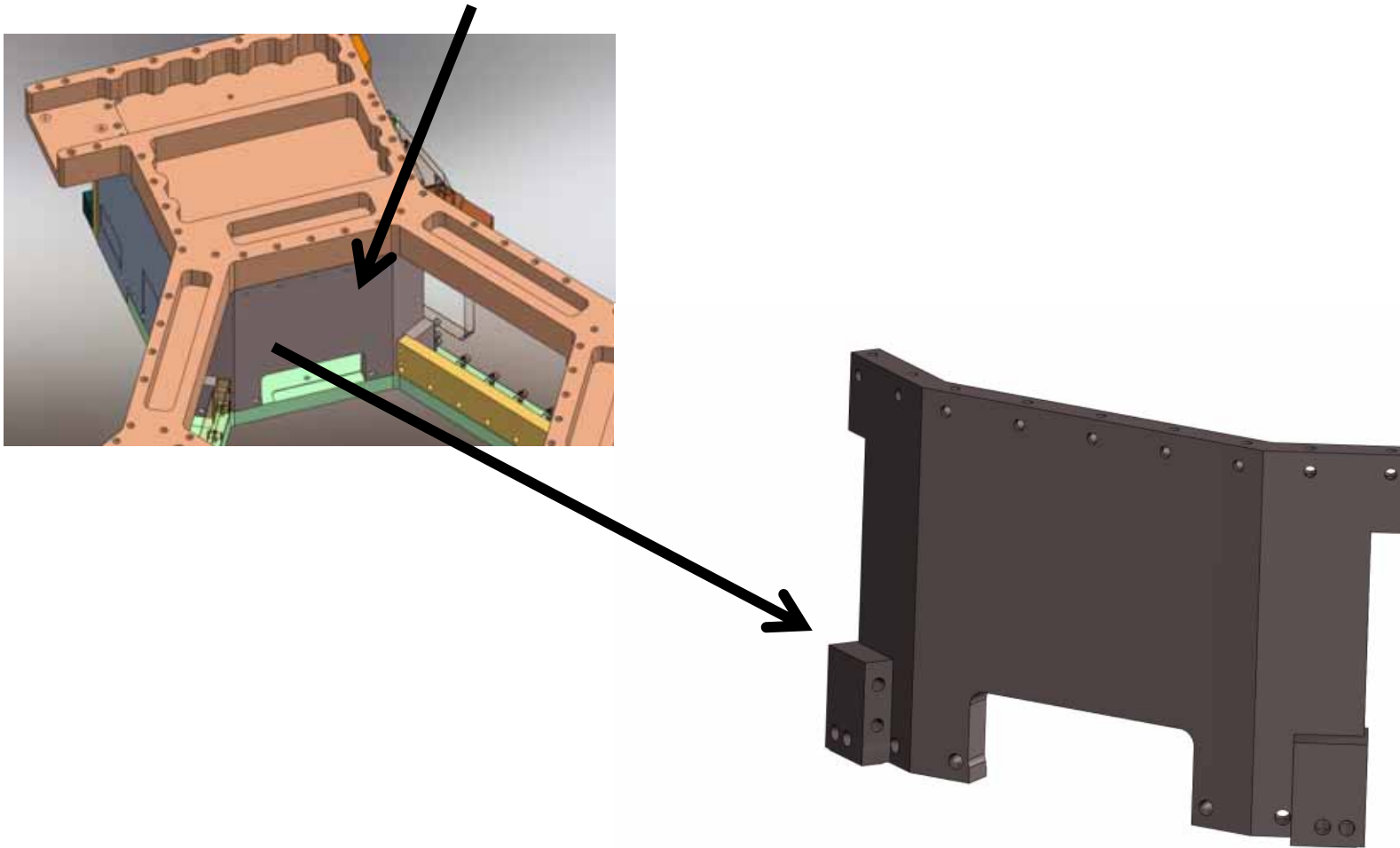
1 – Design Change List

Item #5 – Part 2007825 – Holes too small



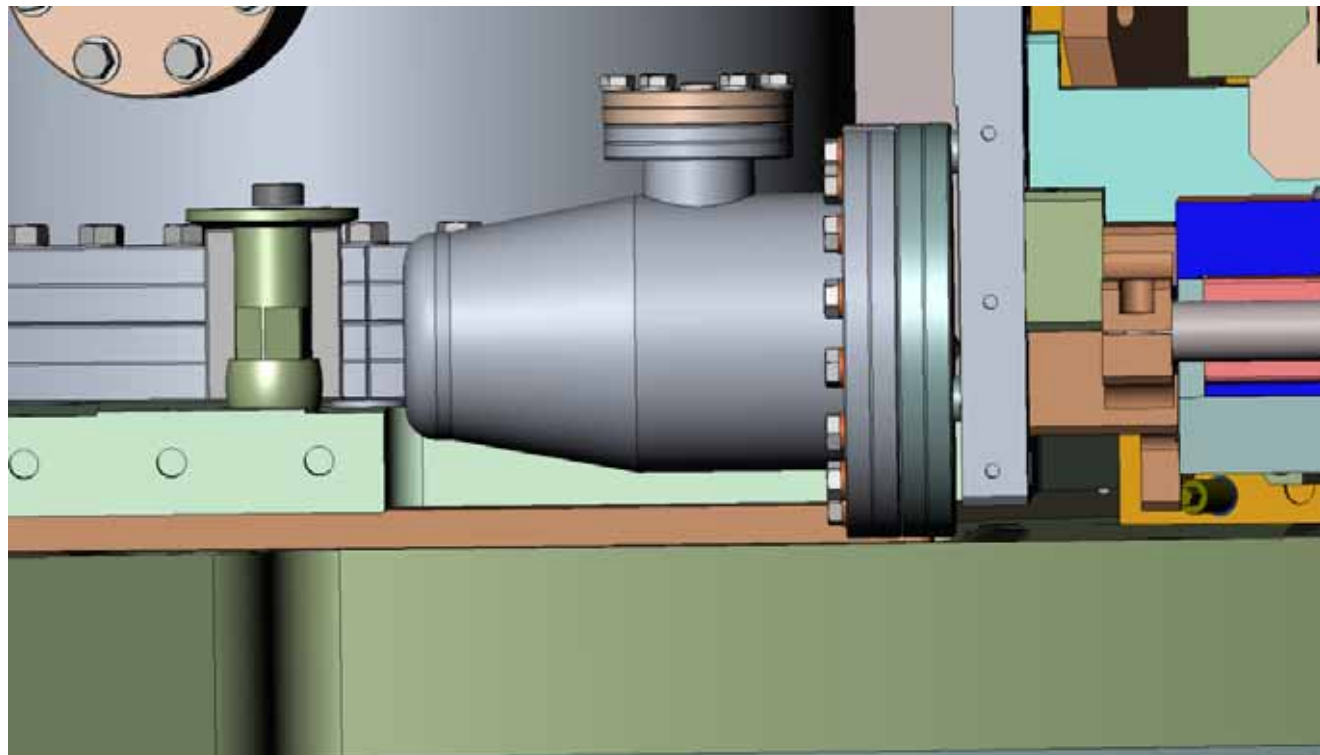
1 – Design Change List

Item #6 – Part 2007827 – Barrel Nut access



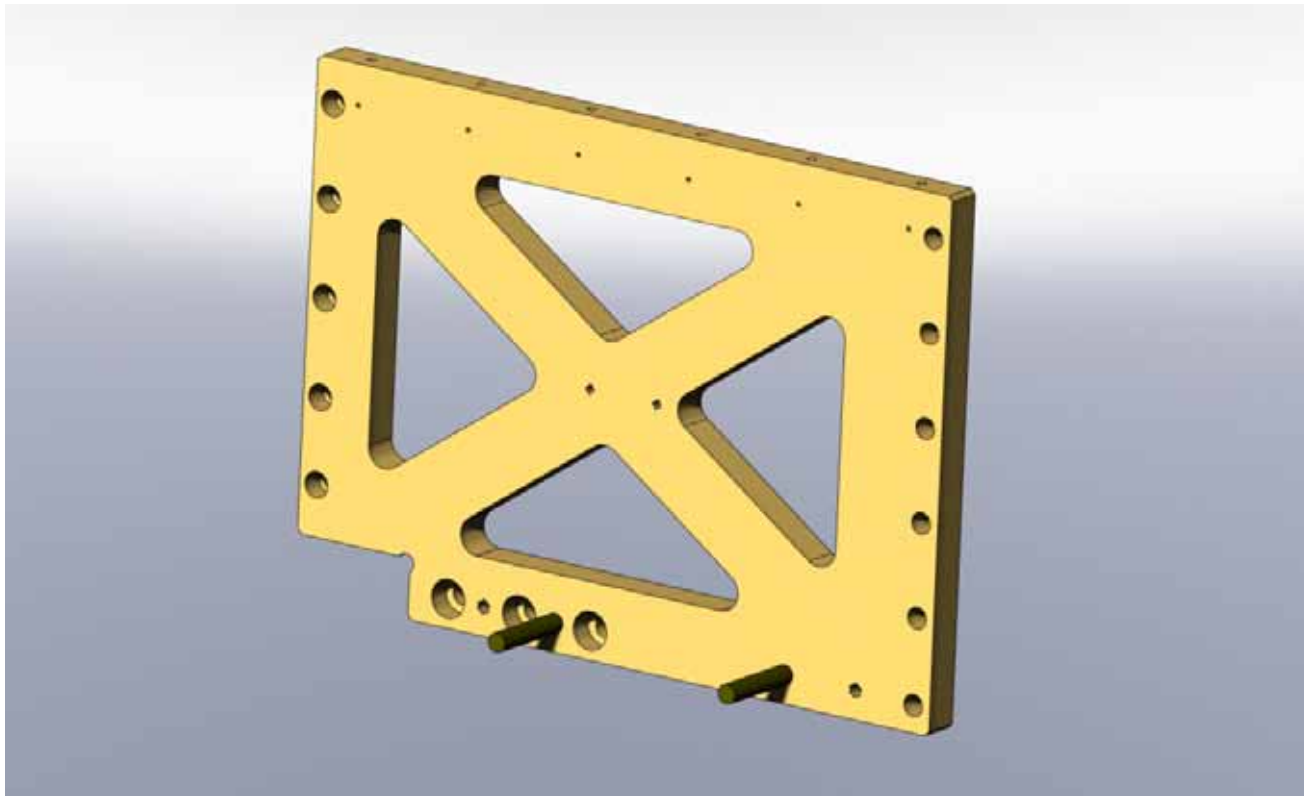
1 – Design Change List

Item #18 – Horizontal L4C – Placement



1 – Design Change List

Item # 32 – 20007831 – MOVE HOLE

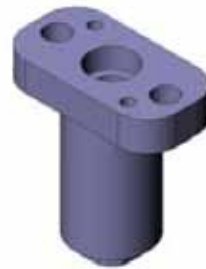


1 – Design Change List

Item # 42– Tooling posts –

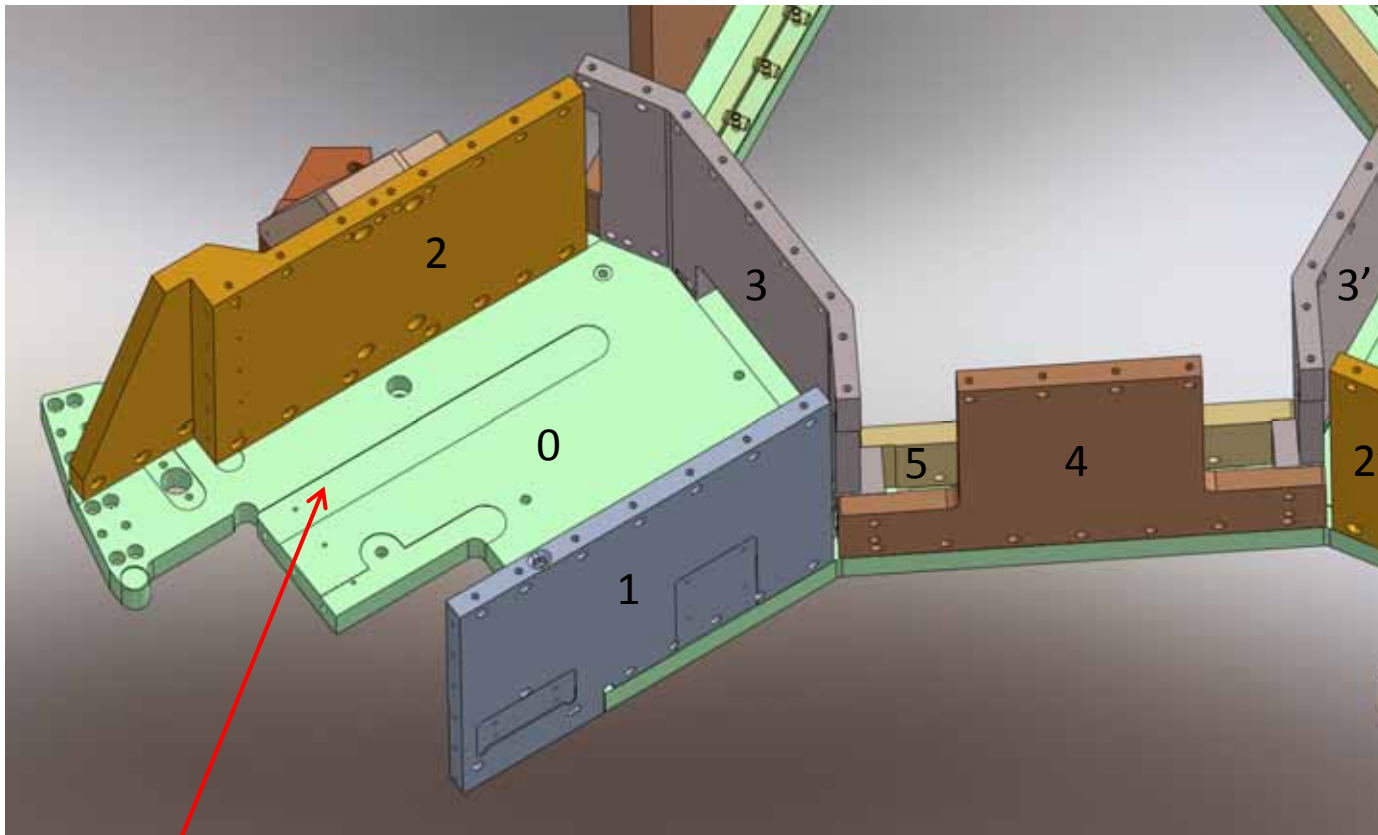


Stage 0-2 Tooling Post



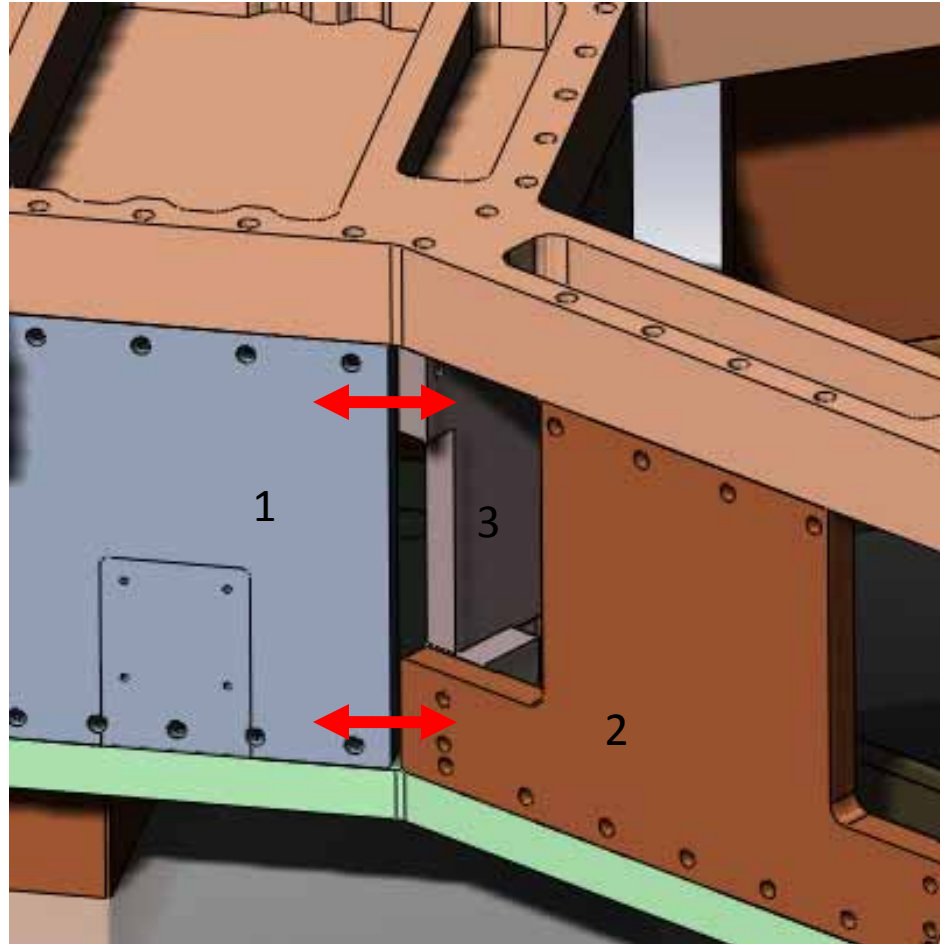
Stage 1-2 Tooling Post

2- Parts referencing: moving to plates pinning

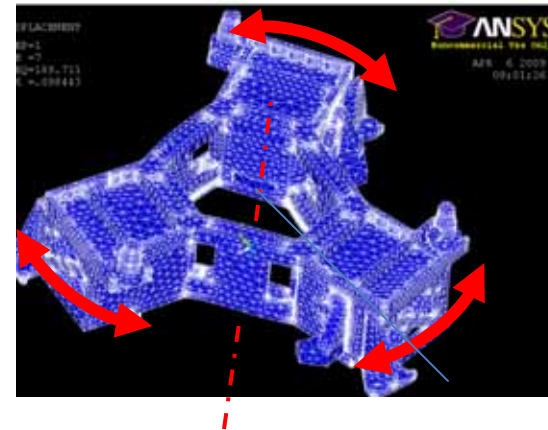
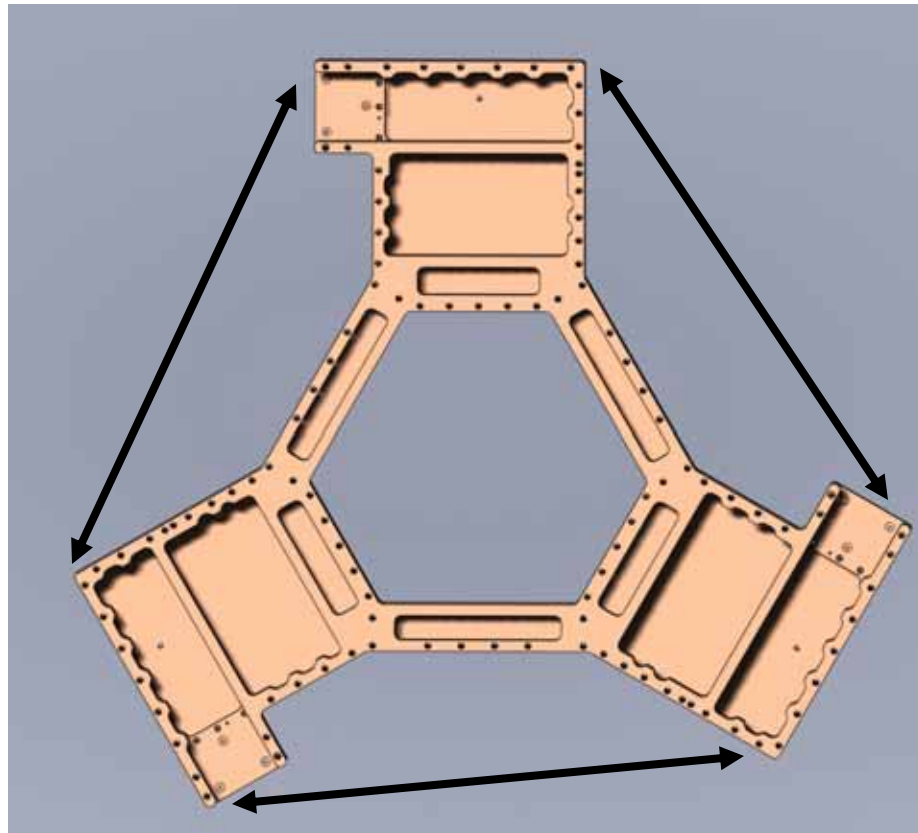


Decision regarding cut off

3- Improve the connection between plates

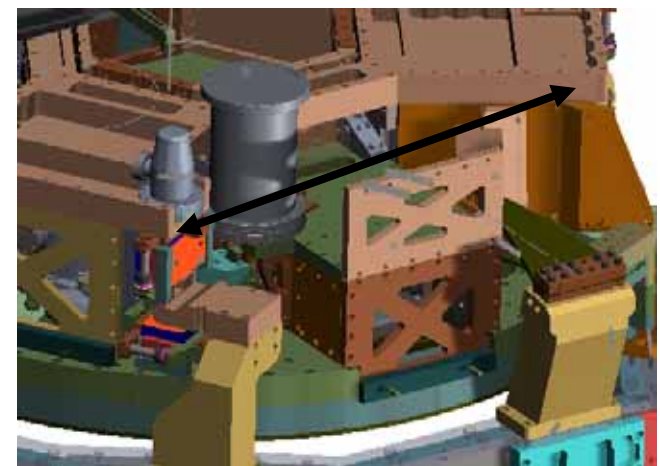
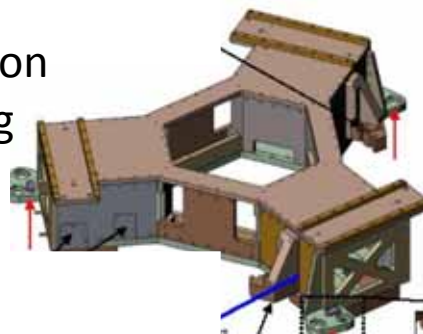


3- Improve the connection between plates

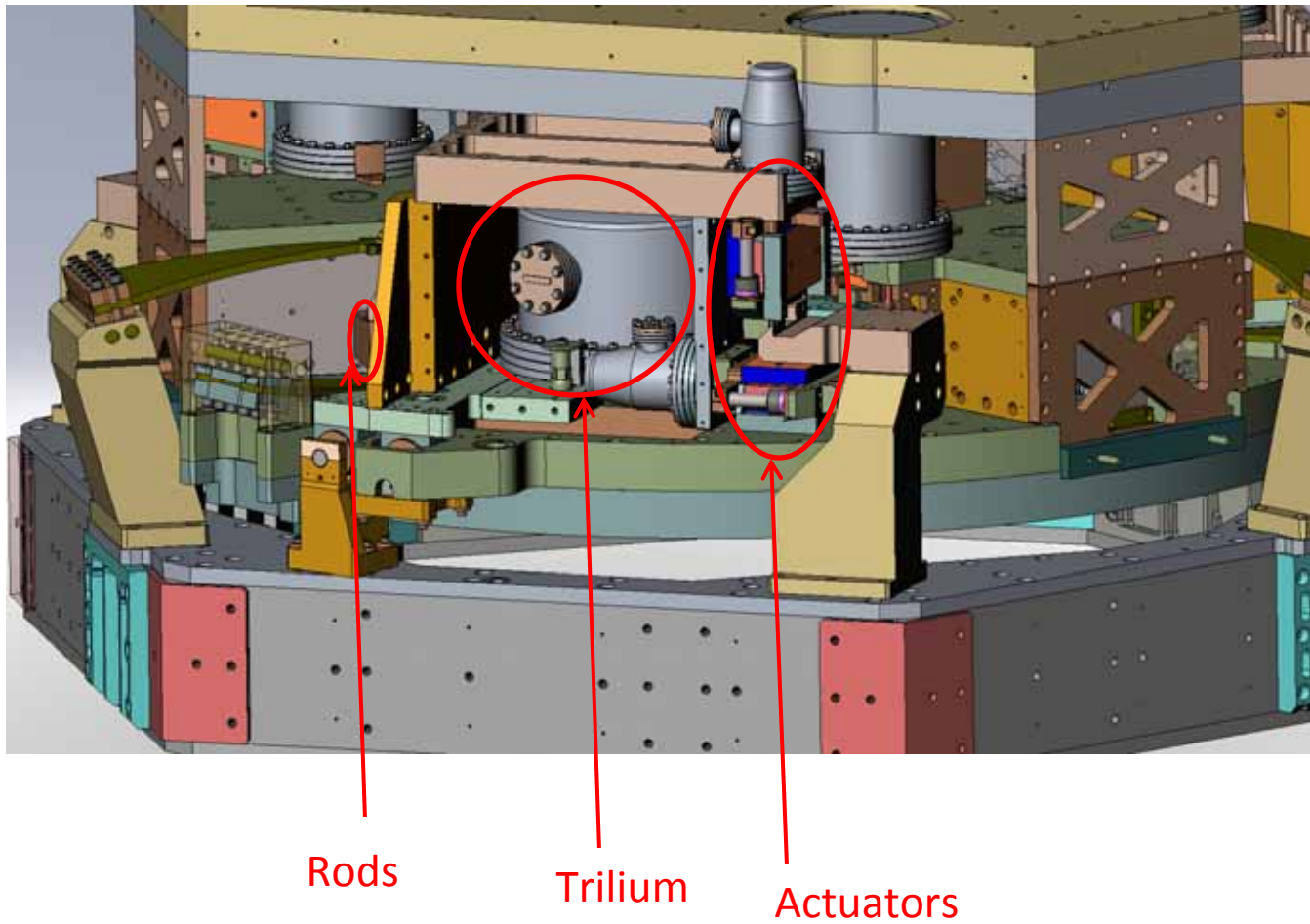


FEA results

Transition meeting

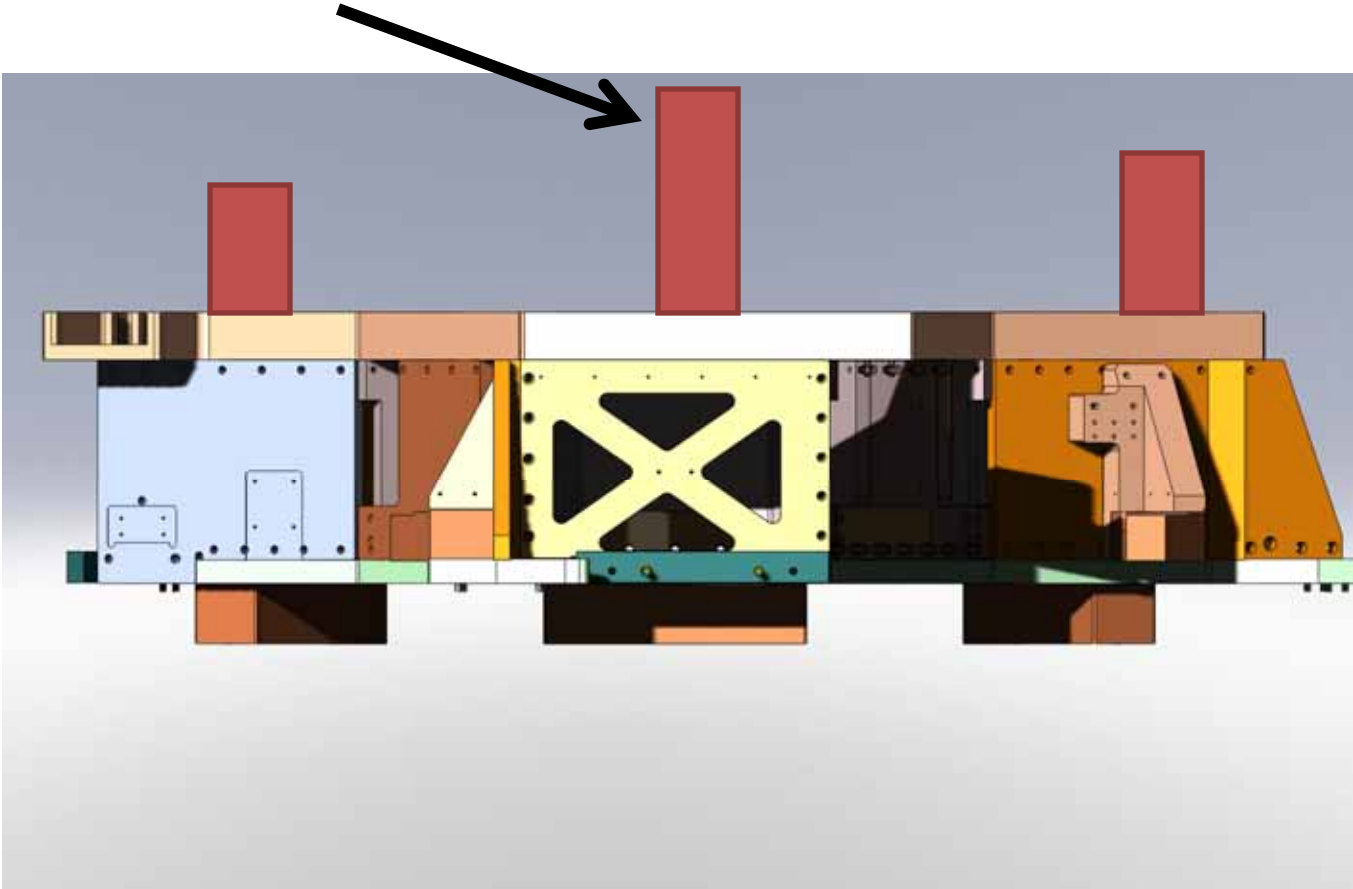


4- Other projects integration

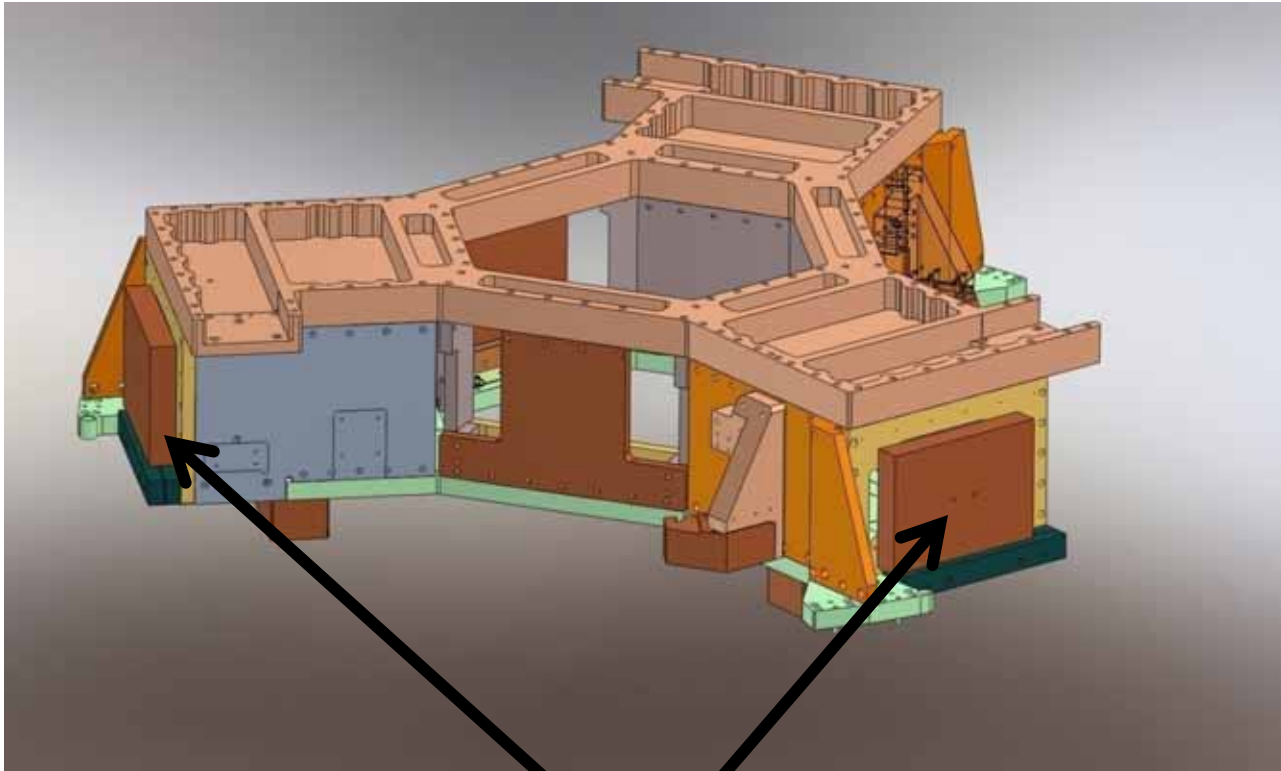


5- Trim masses

No more stacks



5- Trim masses



ASI
Design

5- Trim masses

