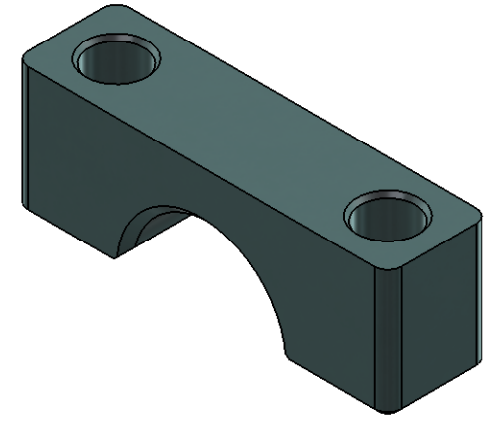
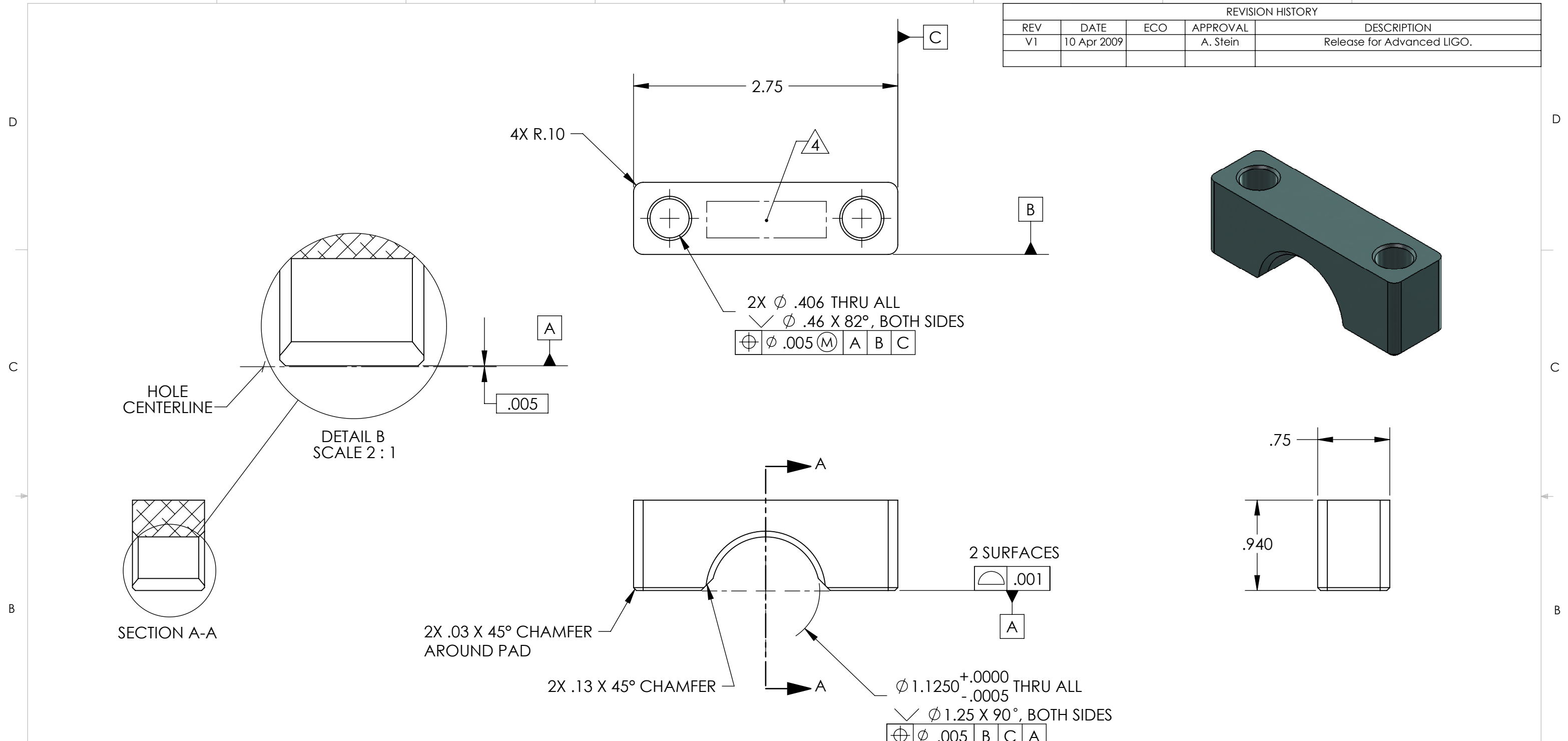


| REVISION HISTORY |             |     |          |                            |
|------------------|-------------|-----|----------|----------------------------|
| REV              | DATE        | ECO | APPROVAL | DESCRIPTION                |
| V1               | 10 Apr 2009 |     | A. Stein | Release for Advanced LIGO. |



MANUFACTURING NOTES:

- 1) MACHINE ALL SURFACES TO REMOVE OXIDES AND MILL FINISH. ABRASIVE REMOVAL TECHNIQUES (OTHER THAN DRESSED BLANCHARD GRINDING) ARE NOT ACCEPTABLE.
- 2) ALL MACHINING FLUIDS MUST BE WATER SOLUBLE AND FREE OF SULFUR, CHLORINE, AND SILICONE, SUCH AS CINCINNATI MILACRON CIMTECH 410.
- 3) THOROUGHLY CLEAN PART TO REMOVE ALL OIL, GREASE, DIRT, AND CHIPS.
- 4) WHERE INDICATED, MECHANICALLY SCRIBE, STAMP, OR ENGRAVE THE FOLLOWING INFORMATION AS SHOWN BELOW: **PART NUMBER-REVISION** (AND **TYPE** IF INDICATED), FOLLOWED ON THE NEXT LINE WITH A UNIQUE 3-DIGIT **SERIAL NUMBER** STARTING AT 001 FOR THE FIRST PART AND INCREMENTING THEREAFTER. USE 0.38" TALL CHARACTERS UNLESS PART SIZE DICTATES SMALLER.

D0900635-V1  
 S/N - ###

POST-MANUFACTURING NOTES:

P1) CLEAN TO LIGO STANDARDS, CLASS A (PER E0900047 AND E960022).

UNLESS OTHERWISE SPECIFIED:

DIMENSIONS ARE IN INCHES  
 DECIMAL TOLERANCES:  
 .XX ±.015 .XXX ±.005  
 ANG TOL: ± 1° SURFACE ROUGHNESS: 6.3

REMOVE ALL SHARP EDGES.  
 LEAVE .005 X 45° MIN CHAMFER,  
 OR .005 MIN RADIUS.

THIS PRINT & THE EMBEDDED CAD  
 MODEL ARE THE DOCUMENTATION OF  
 RECORD. UNLESS OTHERWISE SPECIFIED,  
 ALL DIMENSIONS IN THE MODEL ARE  
 BASIC, WITH TOLERANCES GIVEN BY:

| APPROVALS                      | DATE      |
|--------------------------------|-----------|
| ENGINEERING (ASJ):<br>R. Kovac | 2/18/2005 |
| QUALITY (ASJ):<br>M. King      | 2/18/2005 |
| MATERIAL: <b>2024-T351 Al</b>  |           |
| FINISH: <b>None</b>            |           |
| MASS: <b>0.13 lbs</b>          |           |

|                    |   |   |   |
|--------------------|---|---|---|
| $\frac{1}{2}$ .010 | A | B | C |
|--------------------|---|---|---|

|   |                                    |
|---|------------------------------------|
| ORIGINAL DESIGN BY:<br><b>ALLIANCE SPACESYSTEMS, INC.</b><br>1250 Lincoln Ave., Suite 100<br>Pasadena, CA 91103 | MODIFIED BY:<br>                   |
| DESCRIPTION: <b>Locker Pin Cap</b>  |                                    |
| P/N: <b>D0900635</b>  | CONFIG: -                          |
| CAD FILE NAME: D0900635_Locker_Pin_Cap  |                                    |
| PROJECT: HAM ISI, Advanced LIGO   |                                    |
| SIZE <b>B</b>   | SCALE: <b>1:1</b>                  |
| SHEET <b>1</b> OF <b>1</b>  | DRAWN BY: <b>Kevin Spink (ASI)</b> |
| DATE PRINTED: <b>4/13/2009</b>  | REV <b>V1</b>                      |