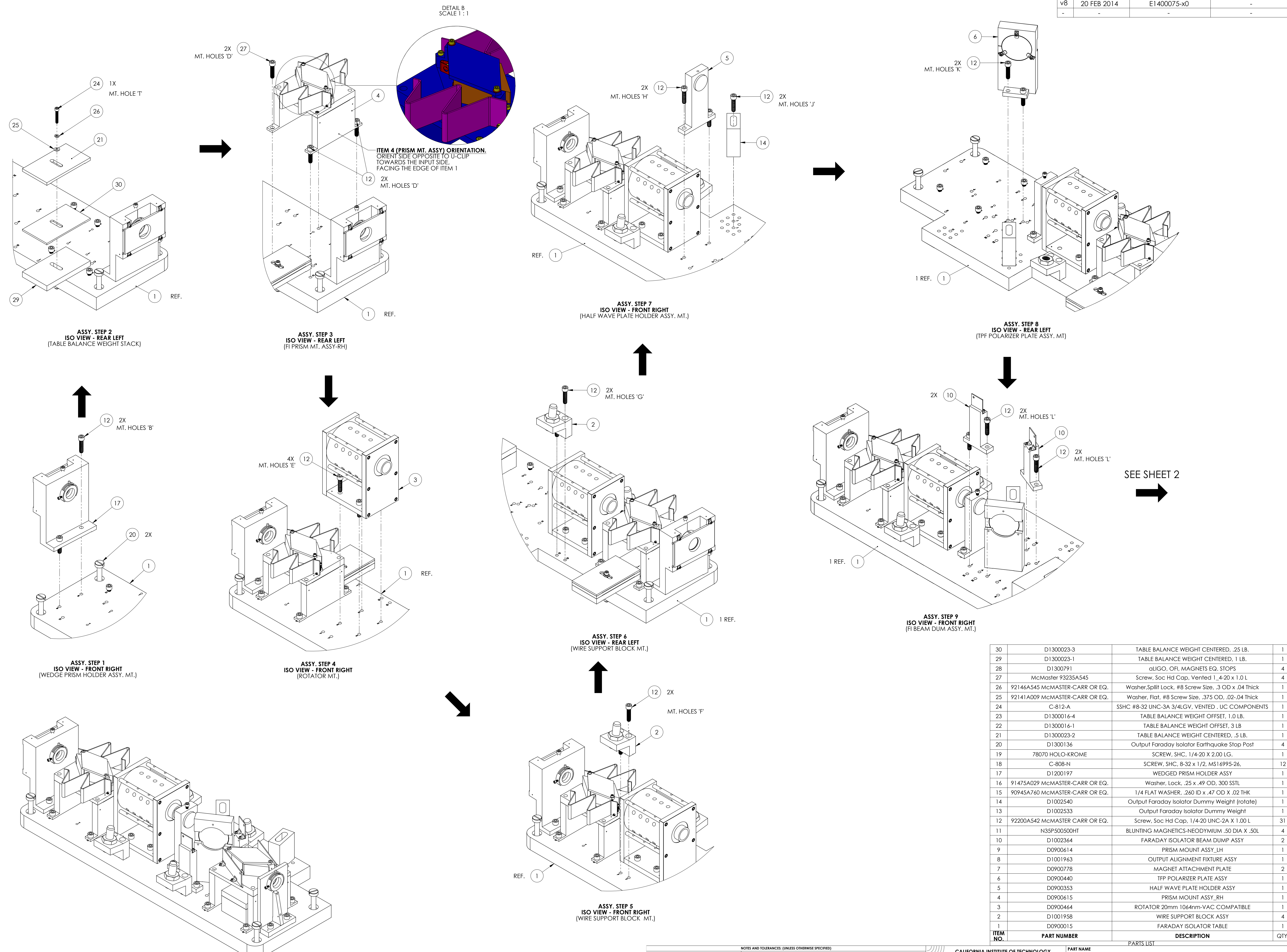


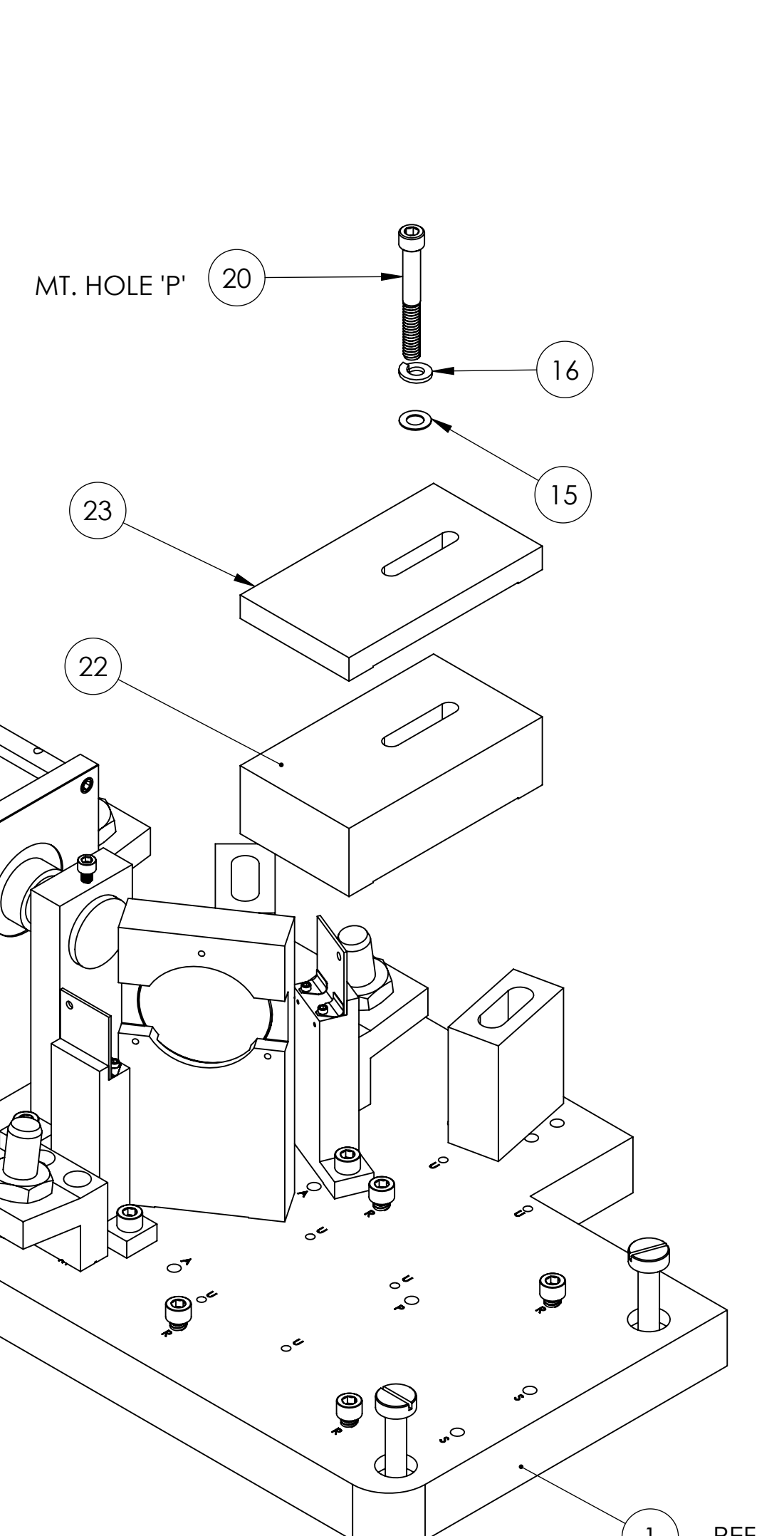
REV.	DATE	DCN #	DRAWING TREE #
v1	08 OCT 2010	E1000563	-
v8	20 FEB 2014	E1400075-x0	-
-	-	-	-



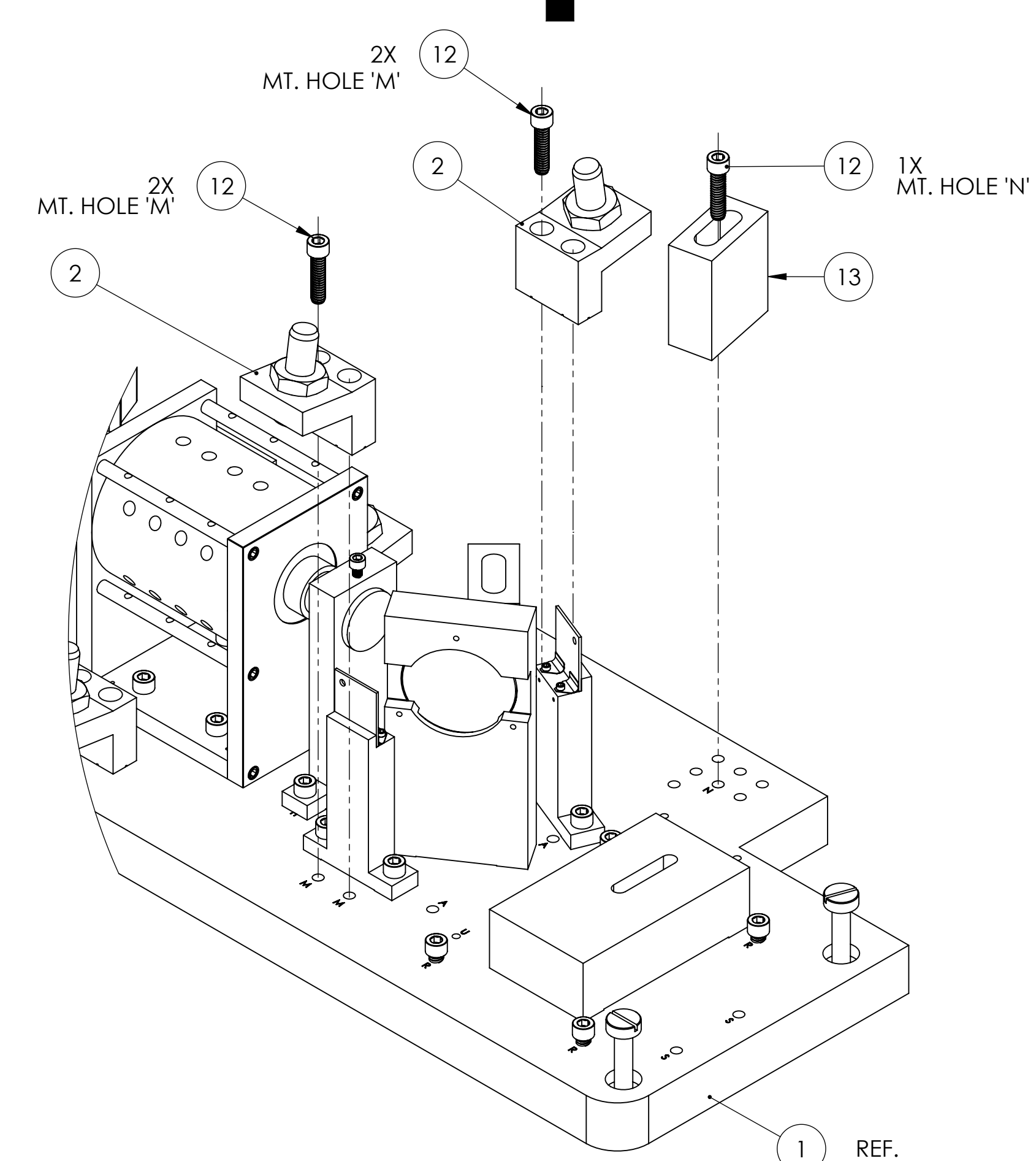
SEE SHEET 2

ITEM NO.	PART NUMBER	DESCRIPTION	QTY.
30	D1300023-3	TABLE BALANCE WEIGHT CENTERED, .25 LB.	1
29	D1300023-1	TABLE BALANCE WEIGHT CENTERED, 1 LB.	1
28	D1300791	aLIGO_OFI_MAGNETS EQ_STOPS	4
27	McMaster 93235A545	Screw, Soc Hd Cap, Vented 1.4-20 x 1.0 L	4
26	92146A545 McMaster-CARR OR EQ.	Washer, Split Lock, #8 Screw Size, .3 OD x .04 Thick	1
25	92141A009 McMaster-CARR OR EQ.	Washer, Flat, #8 Screw Size, .375 OD, .02-.04 Thick	1
24	C-812-A	SSH# #8-32 UNC-3A 3/4 LGV, VENTED, UC COMPONENTS	1
23	D1300016-4	TABLE BALANCE WEIGHT OFFSET, 1.0 LB.	1
22	D1300016-1	TABLE BALANCE WEIGHT OFFSET, 3 LB	1
21	D1300023-2	TABLE BALANCE WEIGHT CENTERED, .5 LB.	1
20	D1300136	Output Faraday Isolator Earthquake Stop Post	4
19	78070 HOLO-KROME	SCREW, SHC, 1/4-20 X 2.00 LG.	1
18	C-808-N	SCREW, SHC, 8-32 x 1/2, MS16995-26,	12
17	D1200197	WEDGED PRISM HOLDER ASSY	1
16	91475A029 McMaster-CARR OR EQ.	Washer, Lock, .25 x .49 OD, 300 SSSL	1
15	90945A760 McMaster-CARR OR EQ.	1/4 FLAT WASHER, .260 ID x .47 OD X .02 THK	1
14	D1002540	Output Faraday Isolator Dummy Weight (rotate)	1
13	D1002533	Output Faraday Isolator Dummy Weight	1
12	92200A542 McMaster-CARR OR EQ.	Screw, Soc Hd Cap, 1/4-20 UNC-2A X 1.00 L	31
11	N35P500500HT	BLUNTING MAGNETICS-NEODYMIUM .50 DIA X .50L	4
10	D1002364	FARADAY ISOLATOR BEAM DUMP ASSY	2
9	D0900614	PRISM MOUNT ASSY_LH	1
8	D1001963	OUTPUT ALIGNMENT FIXTURE ASSY	1
7	D0900778	MAGNET ATTACHMENT PLATE	2
6	D0900440	TPF POLARIZER PLATE ASSY	1
5	D0900353	HALF WAVE PLATE HOLDER ASSY	1
4	D0900615	PRISM MOUNT ASSY_RH	1
3	D0900464	ROTATOR 20mm 1064nm-VAC COMPATIBLE	1
2	D1001958	WIRE SUPPORT BLOCK ASSY	4
1	D0900015	FARADAY ISOLATOR TABLE	1

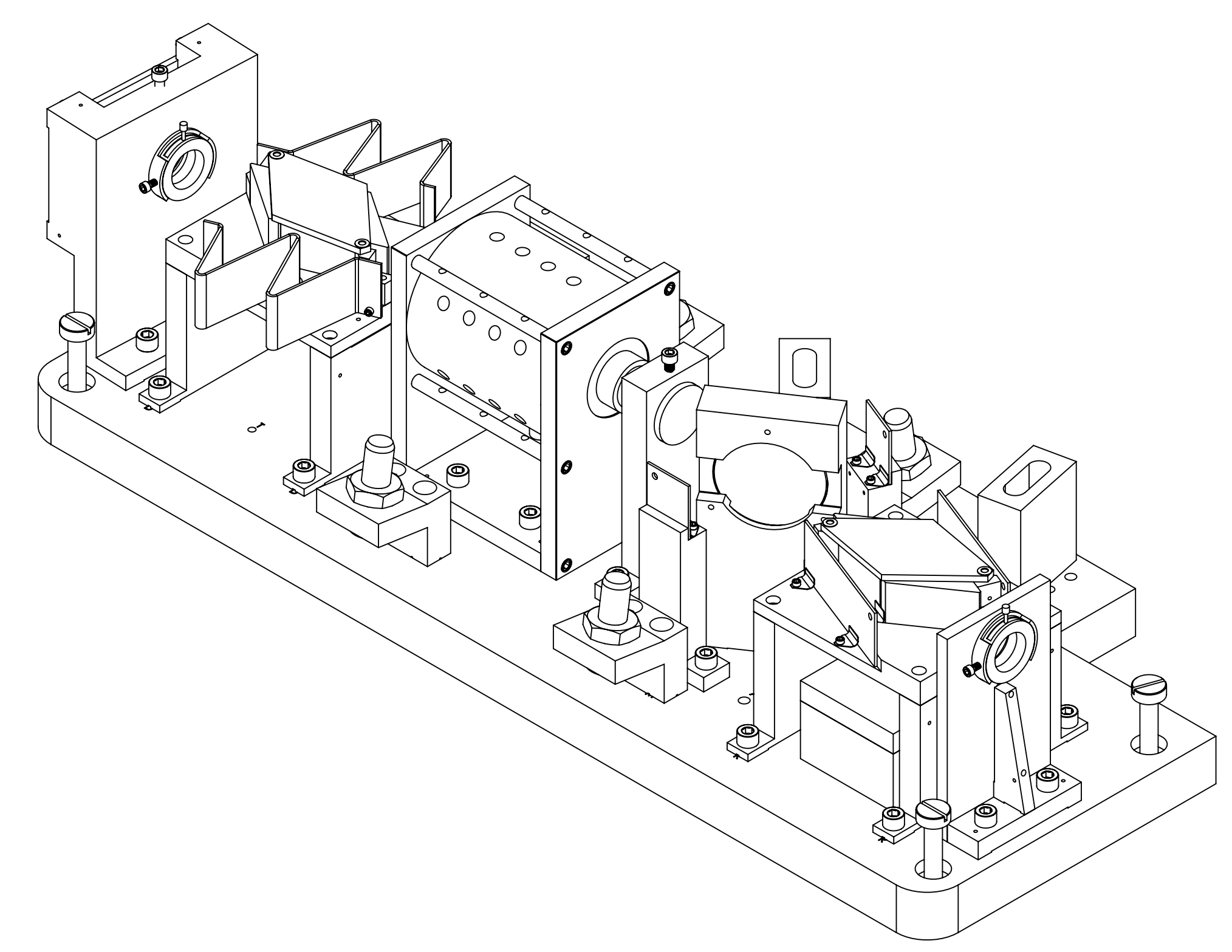
NOTES AND TOLERANCES: (UNLESS OTHERWISE SPECIFIED)		LIGO CALIFORNIA INSTITUTE OF TECHNOLOGY MASSACHUSETTS INSTITUTE OF TECHNOLOGY		PART NAME	
MATERIAL	N/A	FINISH	N/A μinch	FARADAY ISOLATOR TABLE ASSY	
SYSTEM	ADVANCED LIGO	SUB-SYSTEM	AOS	DESIGNER	SIZE DWG. NO.
DRAFTER		CHECKER		DATE	D0900623
CHECKER		APPROVAL		SCALE: 1:2	PROJECTION:
PROJECT	D0900136	REV.	v8	SHEET 1 OF 3	



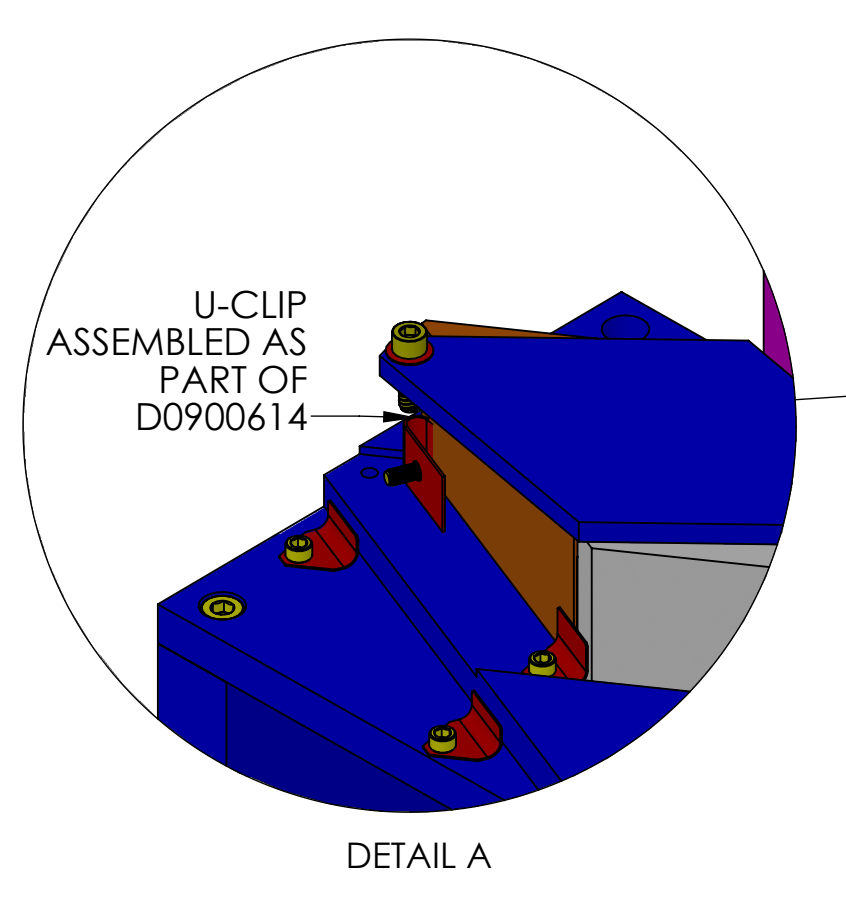
ASSY. STEP 11
ISO VIEW - FRONT RIGHT
(TABLE BALANCE WEIGHT STACK)



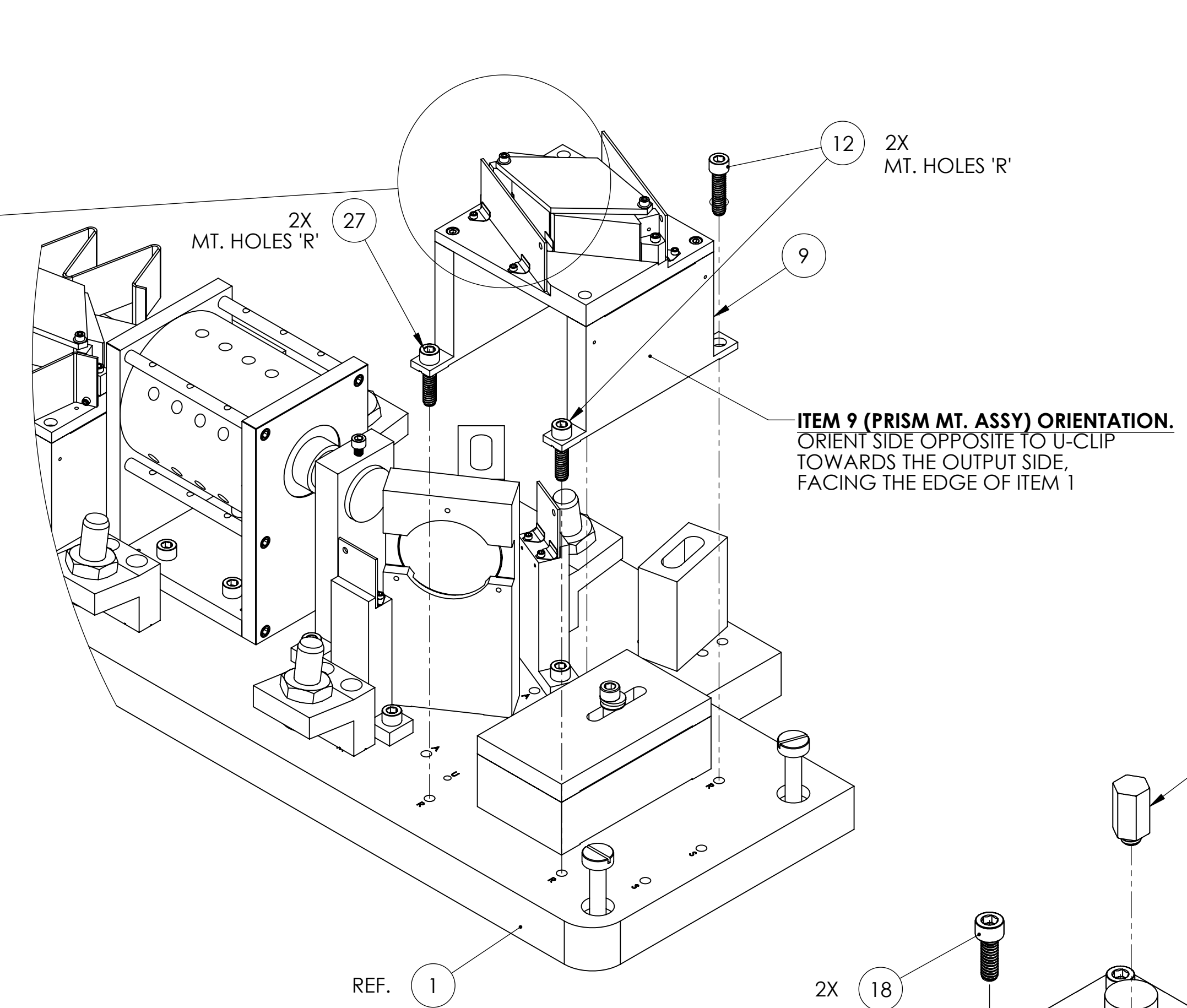
ASSY. STEP 10
ISO VIEW - FRONT RIGHT
(WIRE SUPPORT BLOCKS + DUMMY WEIGHT MT.)



ISO VIEW

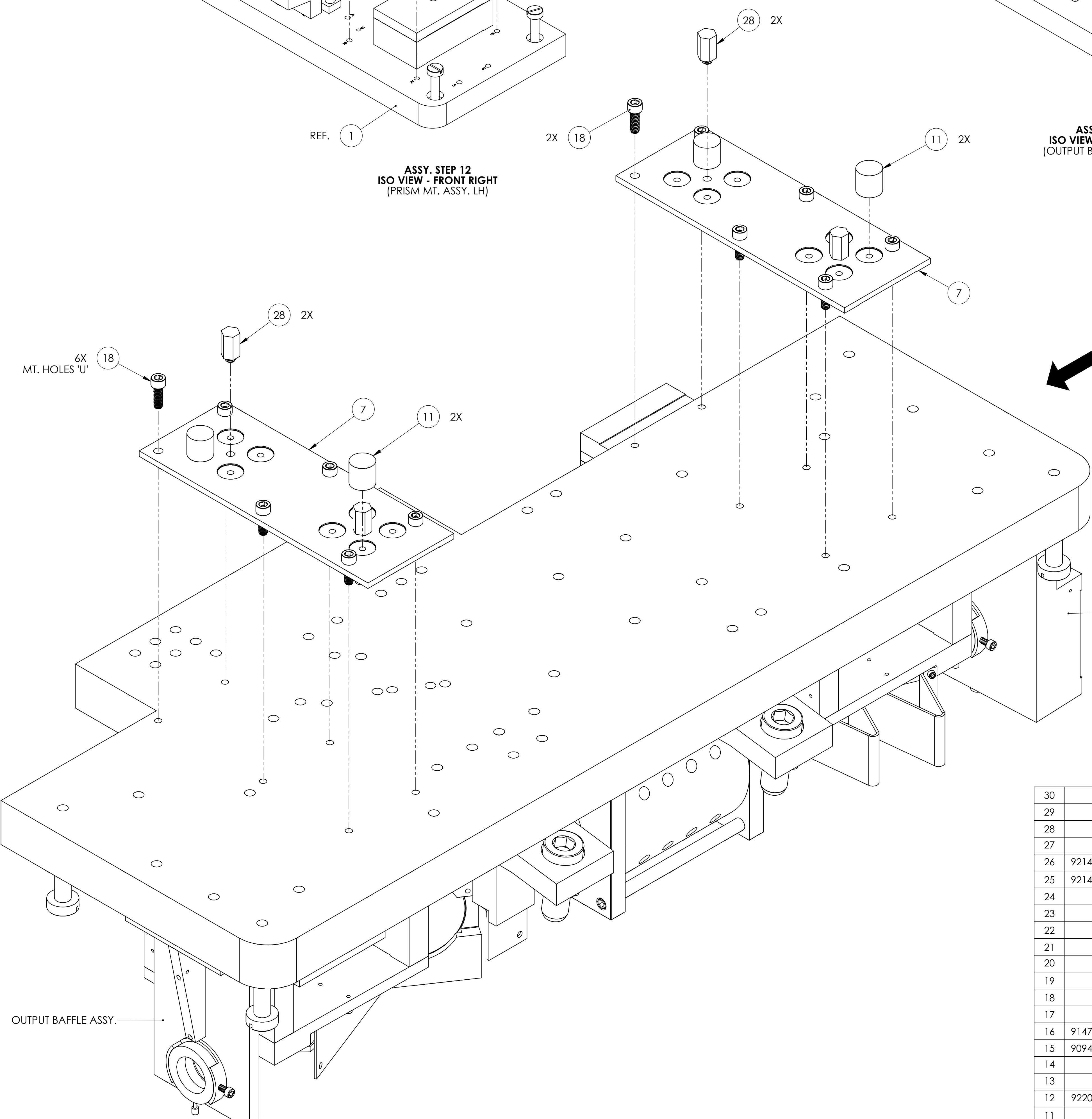


DETAIL A

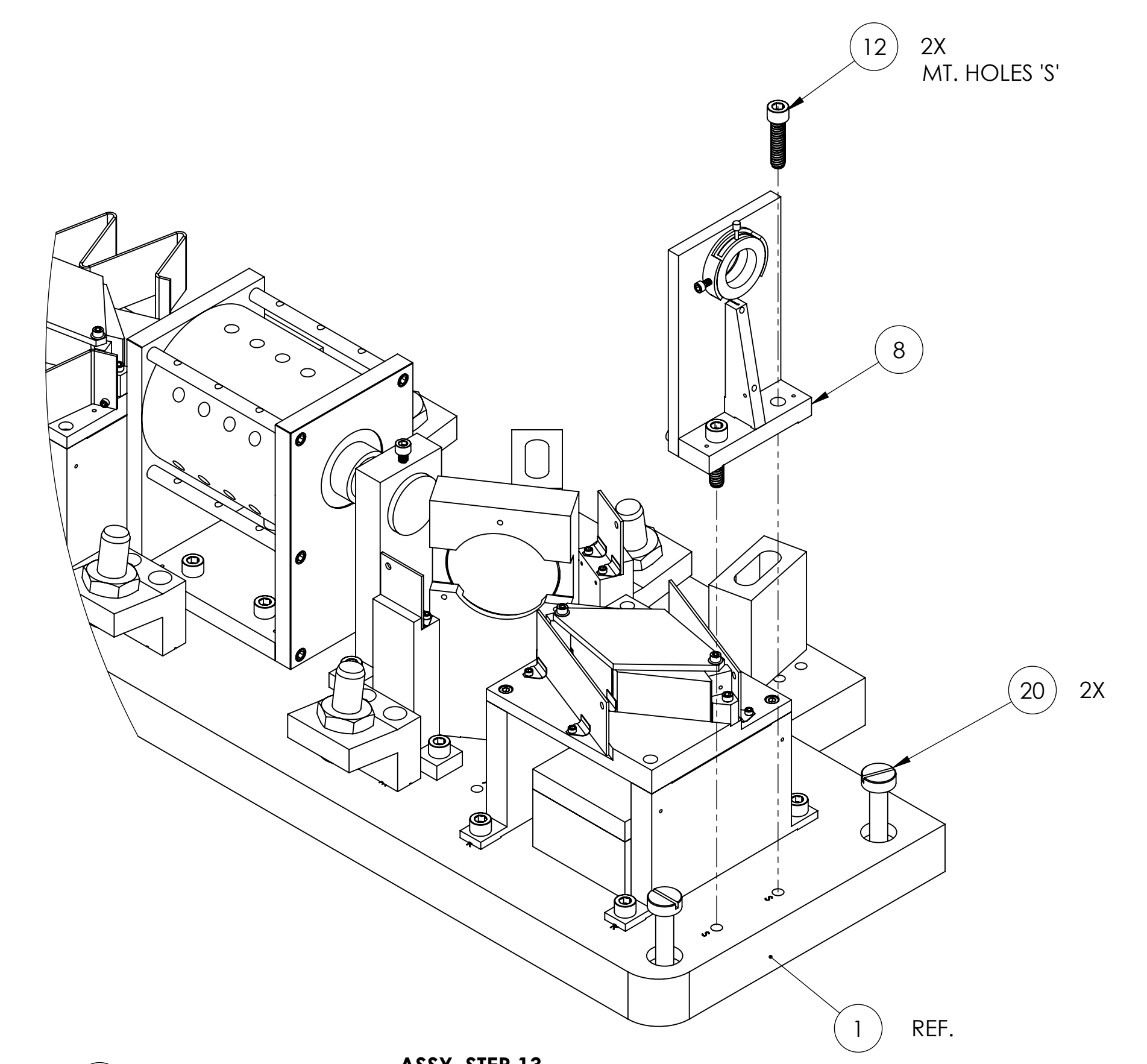


ASSY. STEP 12
ISO VIEW - FRONT RIGHT
(PRISM MT. ASSY. LH)

ITEM 9 (PRISM MT. ASSY) ORIENTATION.
ORIENT SIDE OPPOSITE TO U-CLIP
TOWARDS THE OUTPUT SIDE,
FACING THE EDGE OF ITEM 1



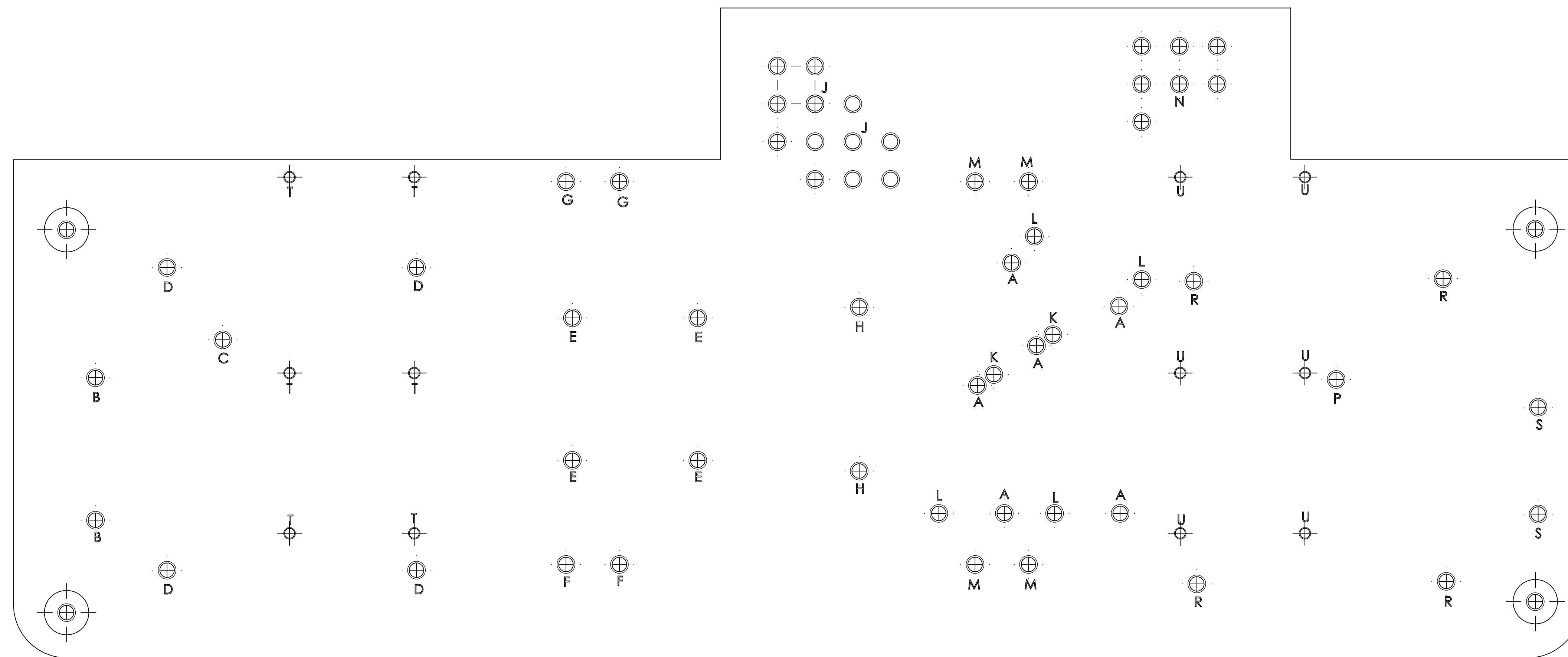
ASSY. STEP 14
ISO VIEW - UNDERSIDE
(MAGNET PLATE MT.)



ASSY. STEP 13
ISO VIEW - FRONT RIGHT
(OUTPUT BAFFLE ASSY. MT.)

FROM SHEET 1

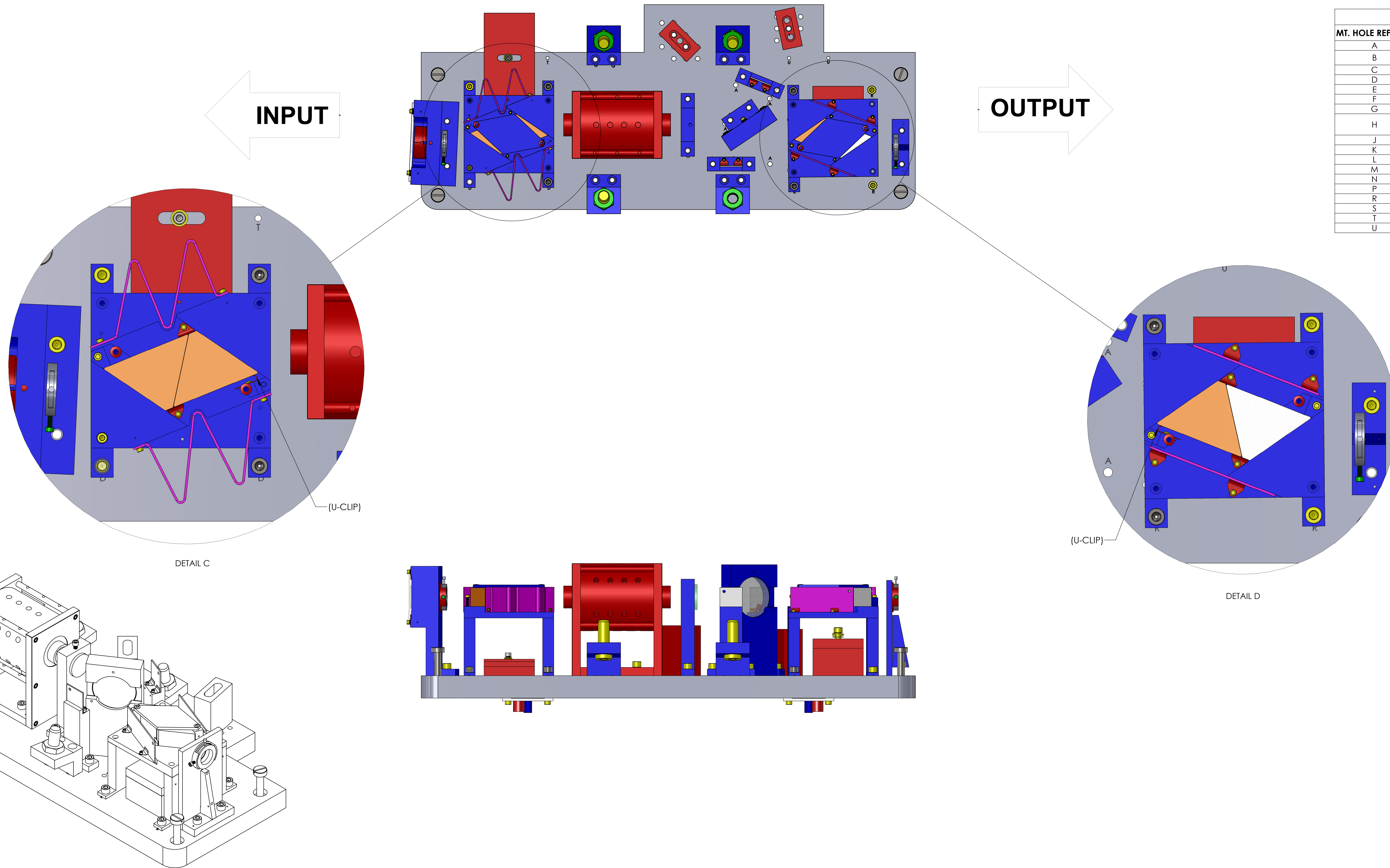
ITEM NO.	PART NUMBER	DESCRIPTION	QTY.
30	D1300023-3	TABLE BALANCE WEIGHT CENTERED, .25 LB.	1
29	D1300023-1	TABLE BALANCE WEIGHT CENTERED, 1 LB.	1
28	D1300791	aLIGO, OFI, MAGNETS EQ. STOPS	4
27	McMaster 93235A545	Screw, Soc Hd Cap, Vented 1.4-20 x 1.0 L	4
26	92146A545 MCMMASTER-CARR OR EQ.	Washer, Split Lock, #8 Screw Size, .3 OD x .04 Thick	1
25	92141A009 MCMMASTER-CARR OR EQ.	Washer, Flat, #8 Screw Size, .375 OD, .02-.04 Thick	1
24	C-812-A	SSHC #8-32 UNC-3A 3/4 LGV. VENTED . UC COMPONENTS	1
23	D1300016-4	TABLE BALANCE WEIGHT OFFSET, 1.0 LB.	1
22	D1300016-1	TABLE BALANCE WEIGHT OFFSET, 3 LB	1
21	D1300023-2	TABLE BALANCE WEIGHT CENTERED, .5 LB.	1
20	D1300136	Output Faraday Isolator Earthquake Stop Post	4
19	78070 HOLO-KROME	SCREW, SHC, 1/4-20 X 2.00 LG.	1
18	C-808-N	SCREW, SHC, 8-32 x 1/2, MS16995-26,	12
17	D1200197	WEDGED PRISM HOLDER ASSY	1
16	91475A029 MCMMASTER-CARR OR EQ.	Washer, Lock, .25 x .49 OD, 300 SSTL	1
15	90945A760 MCMMASTER-CARR OR EQ.	1/4 FLAT WASHER, .260 ID x .47 OD X .02 THK	1
14	D1002540	Output Faraday Isolator Dummy Weight (rotate)	1
13	D1002533	Output Faraday Isolator Dummy Weight	1
12	92200A542 MCMMASTER CARR OR EQ.	Screw, Soc Hd Cap, 1/4-20 UNC-2A X 1.00 L	31
11	N35P500500HT	BLUNTING MAGNETICS-NEODYMIUM .50 DIA X .50L	4
10	D1002364	FARADAY ISOLATOR BEAM DUMP ASSY	2
9	D0900614	PRISM MOUNT ASSY_LH	1
8	D1001963	OUTPUT ALIGNMENT FIXTURE ASSY	1
7	D0900778	MAGNET ATTACHMENT PLATE	2
6	D0900440	TFP POLARIZER PLATE ASSY	1
5	D0900353	HALF WAVE PLATE HOLDER ASSY	1
4	D0900615	PRISM MOUNT ASSY_RH	1
3	D0900464	ROTATOR 20mm 1064nm-VAC COMPATIBLE	1
2	D1001958	WIRE SUPPORT BLOCK ASSY	4
1	D0900015	FARADAY ISOLATOR TABLE	1



ITEM NO. 1, TOP VIEW
 (HOLE DES. ARE FOR REFERENCE ONLY, AND DO NOT APPEAR ON ACTUAL PART)

ITEM NO.	PART NUMBER	DESCRIPTION	QTY.
30	D1300023-3	TABLE BALANCE WEIGHT CENTERED, .25 LB.	1
29	D1300023-1	TABLE BALANCE WEIGHT CENTERED, 1 LB.	1
28	D1300791	aLIGO, OFI, MAGNETS EQ. STOPS	4
27	McMaster 93235A545	Screw, Soc Hd Cap, Vented 1.4-20 x 1.0 L	4
26	92146A545 McMaster-CARR OR EQ.	Washer, Split Lock, #8 Screw Size, .3 OD x .04 Thick	1
25	92141A009 McMaster-CARR OR EQ.	Washer, Flat, #8 Screw Size, .375 OD, .02-.04 Thick	1
24	C-812-A	SSHC #8-32 UNC-3A 3/4 LGV, VENTED UC COMPONENTS	1
23	D1300016-4	TABLE BALANCE WEIGHT OFFSET, 1.0 LB.	1
22	D1300016-1	TABLE BALANCE WEIGHT OFFSET, 3 LB.	1
21	D1300023-2	TABLE BALANCE WEIGHT CENTERED, .5 LB.	1
20	D1300136	Output Faraday Isolator Earthquake Stop Post	4
19	78070 HOLO-KROME	SCREW, SHC, 1/4-20 X 2.00 LG.	1
18	C-808-N	SCREW, SHC, 8-32 x 1/2, MS16995-26,	12
17	D1200197	WEDGED PRISM HOLDER ASSY	1
16	91475A029 McMaster-CARR OR EQ.	Washer, Lock, .25 x .49 OD, 300 SSSL	1
15	90945A760 McMaster-CARR OR EQ.	1/4 FLAT WASHER, .260 ID x .47 OD X .02 THK	1
14	D1002540	Output Faraday Isolator Dummy Weight (rotate)	1
13	D1002533	Output Faraday Isolator Dummy Weight	1
12	92200A542 McMaster CARR OR EQ.	Screw, Soc Hd Cap, 1/4-20 UNC-2A X 1.00 L	31
11	N35P500500HT	BLUNTING MAGNETICS-NEODYMIUM .50 DIA X .50L	4
10	D1002364	FARADAY ISOLATOR BEAM DUMP ASSY	2
9	D0900614	PRISM MOUNT ASSY_LH	1
8	D1001963	OUTPUT ALIGNMENT FIXTURE ASSY	1
7	D0900778	MAGNET ATTACHMENT PLATE	2
6	D0900440	TFP POLARIZER PLATE ASSY	1
5	D0900353	HALF WAVE PLATE HOLDER ASSY	1
4	D0900615	PRISM MOUNT ASSY_RH	1
3	D0900464	ROTATOR 20mm 1064nm-VAC COMPATIBLE	1
2	D1001958	WIRE SUPPORT BLOCK ASSY	4
1	D0900015	FARADAY ISOLATOR TABLE	1

PARTS LIST



ASSEMBLY DATA		
MT. HOLE REF. DES.	'USED FOR'	ASSY. STEP NO.
A	'NOT USED'	-
B	'WEDGE PRISM HOLDER ASSY.'	STEP 1
C	'TABLE BALANCE WEIGHT STACK'	STEP 2
D	'FI PRISM MT. ASSY.-RH'	STEP 3
E	'ROTATOR'	STEP 4
F	'WIRE SUPPORT BLOCK'	STEP 5
G	'WIRE SUPPORT BLOCK'	STEP 6
H	'HALF WAVE PLATE HOLDER ASSY.'	STEP 7
J	'DUMMY WEIGHT'	STEP 8
K	'TFP POLARIZER PLATE ASSY.'	STEP 9
L	'FI BEAM DUMP ASSY.'	STEP 10
M	'WIRE SUPPORT BLOCK (QTY. 2)'	STEP 10
N	'DUMMY WEIGHT'	STEP 11
P	'TABLE BALANCE WEIGHT STACK'	STEP 12
R	'FI PRISM MT. ASSY.-LH'	STEP 12
S	'OUTPUT BAFFLE ASSY.'	STEP 13
T	'MAGNET PLATE MT.'	STEP 14