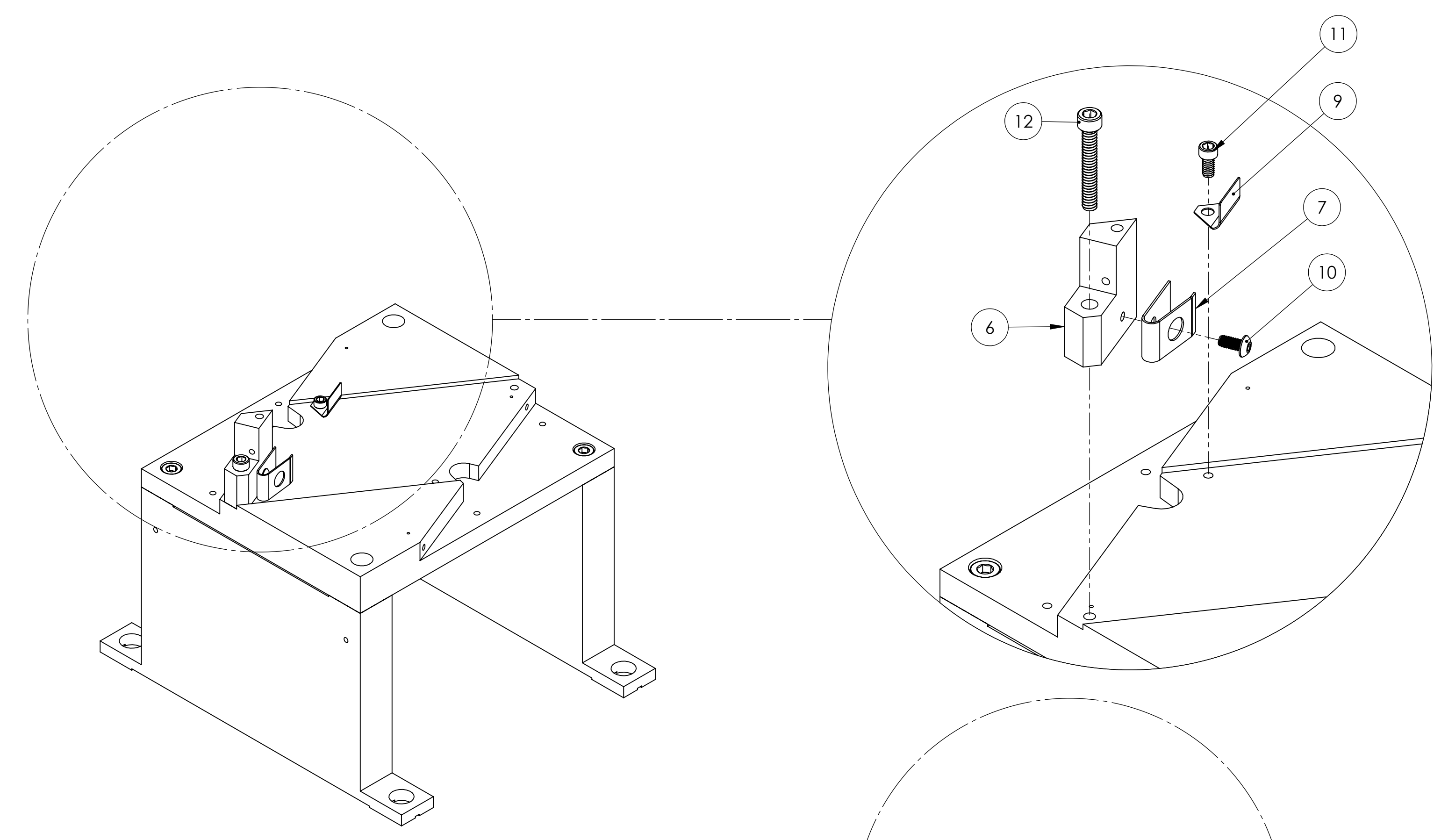
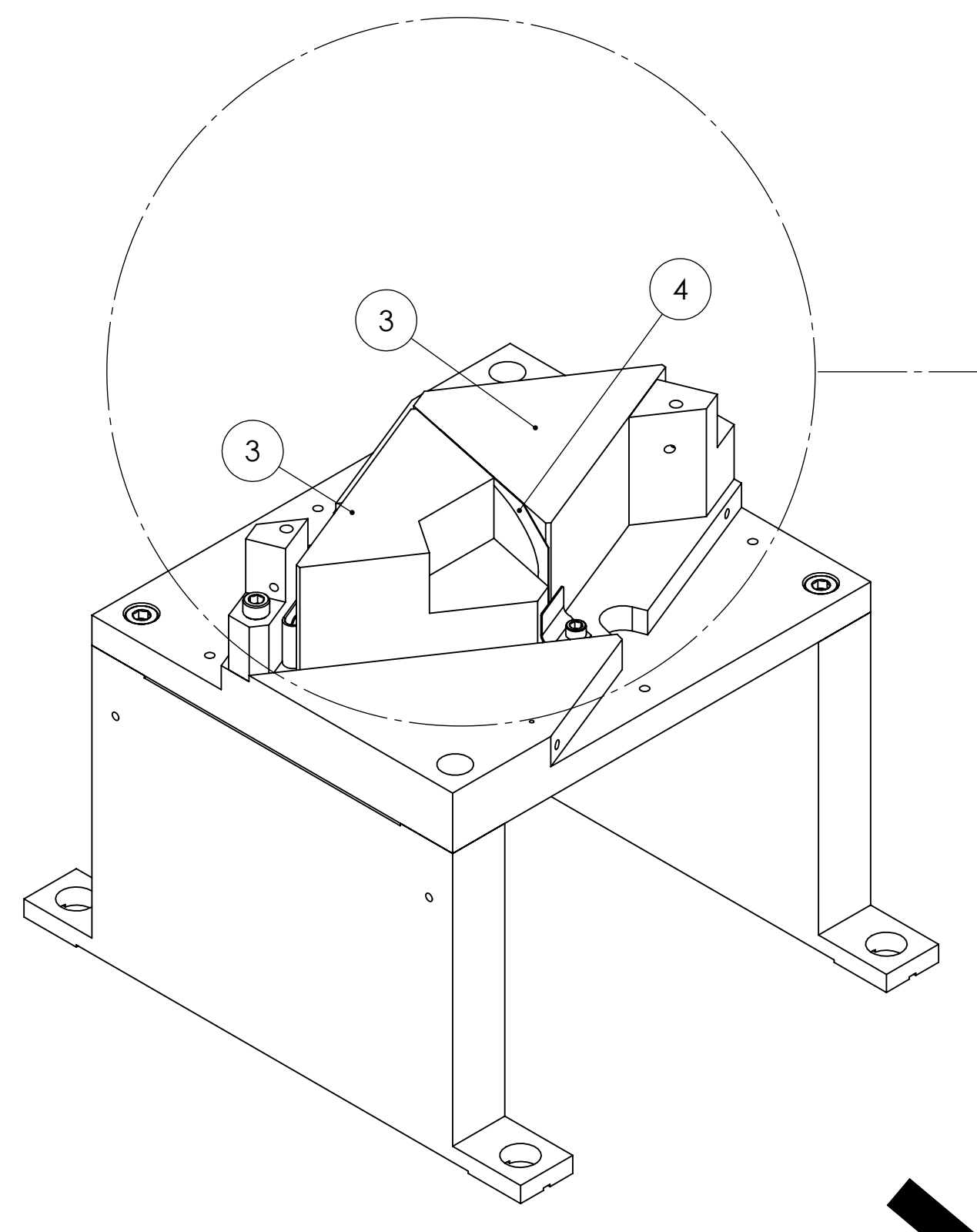


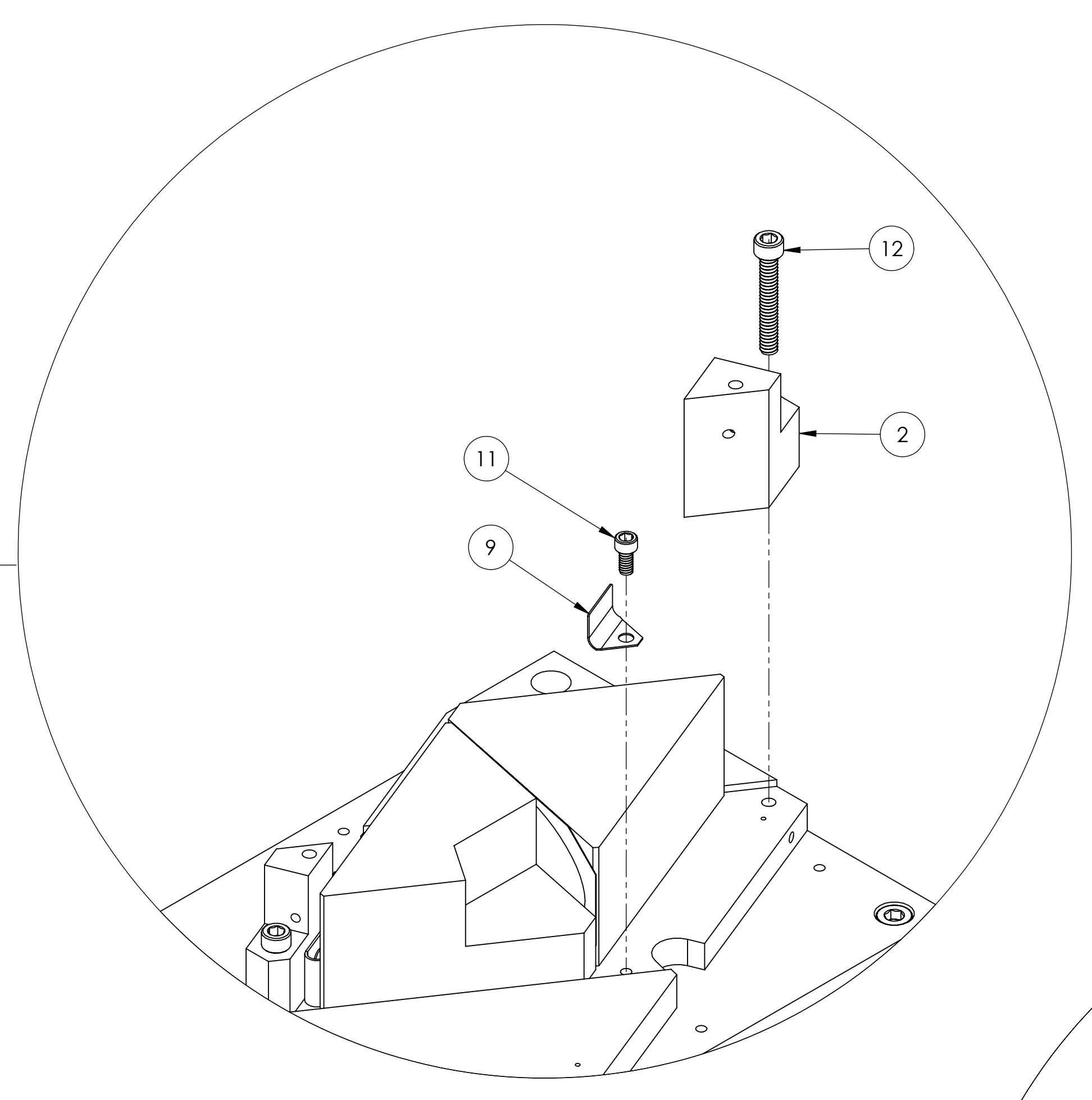
REV.	DATE	DCN #	DRAWING TREE #
v1	7 OCT 2010	E1000563	-
v5	03 OCT 2012	E1000563	-
-	-	-	-



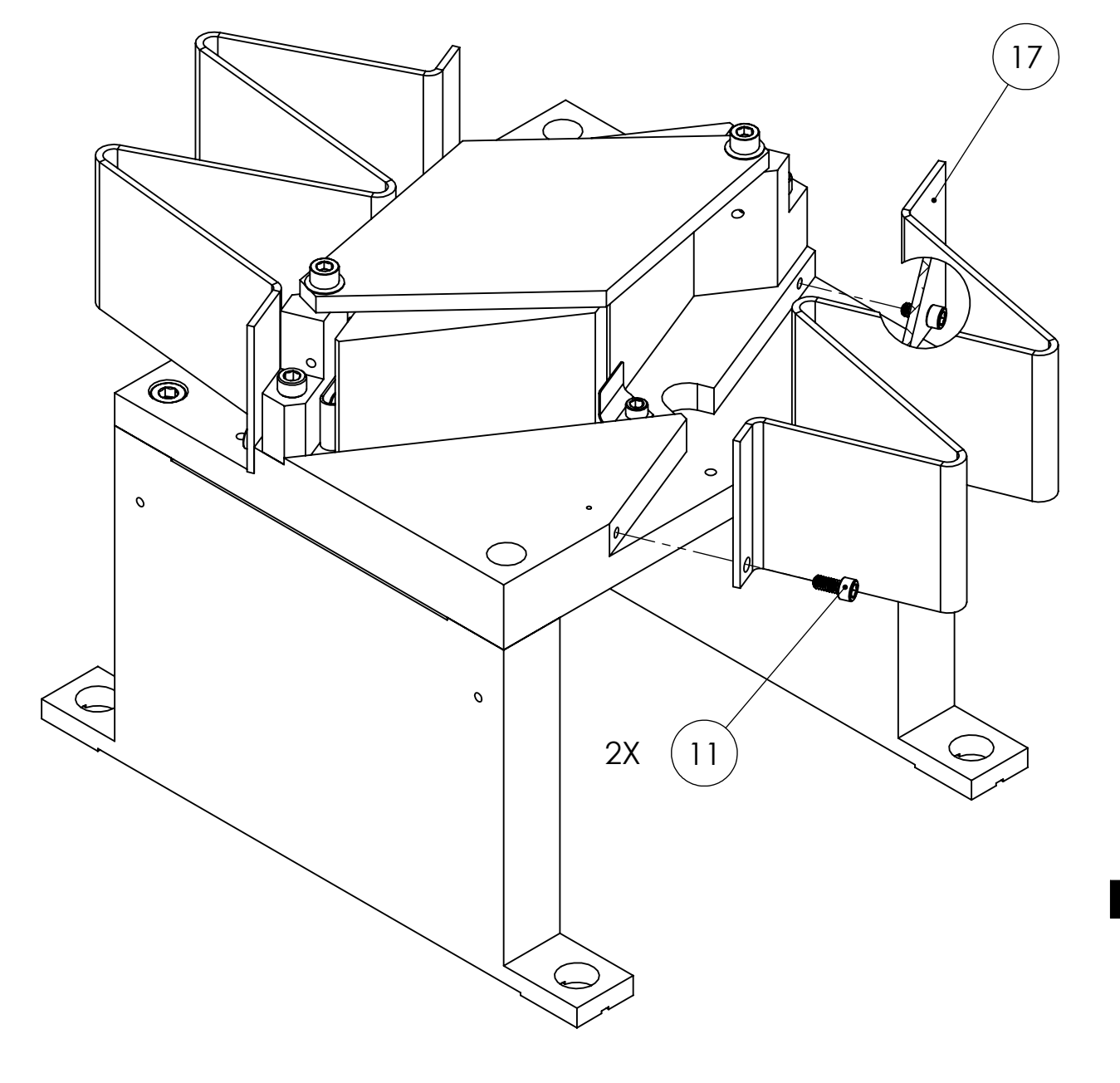
ASSY. STEP 2



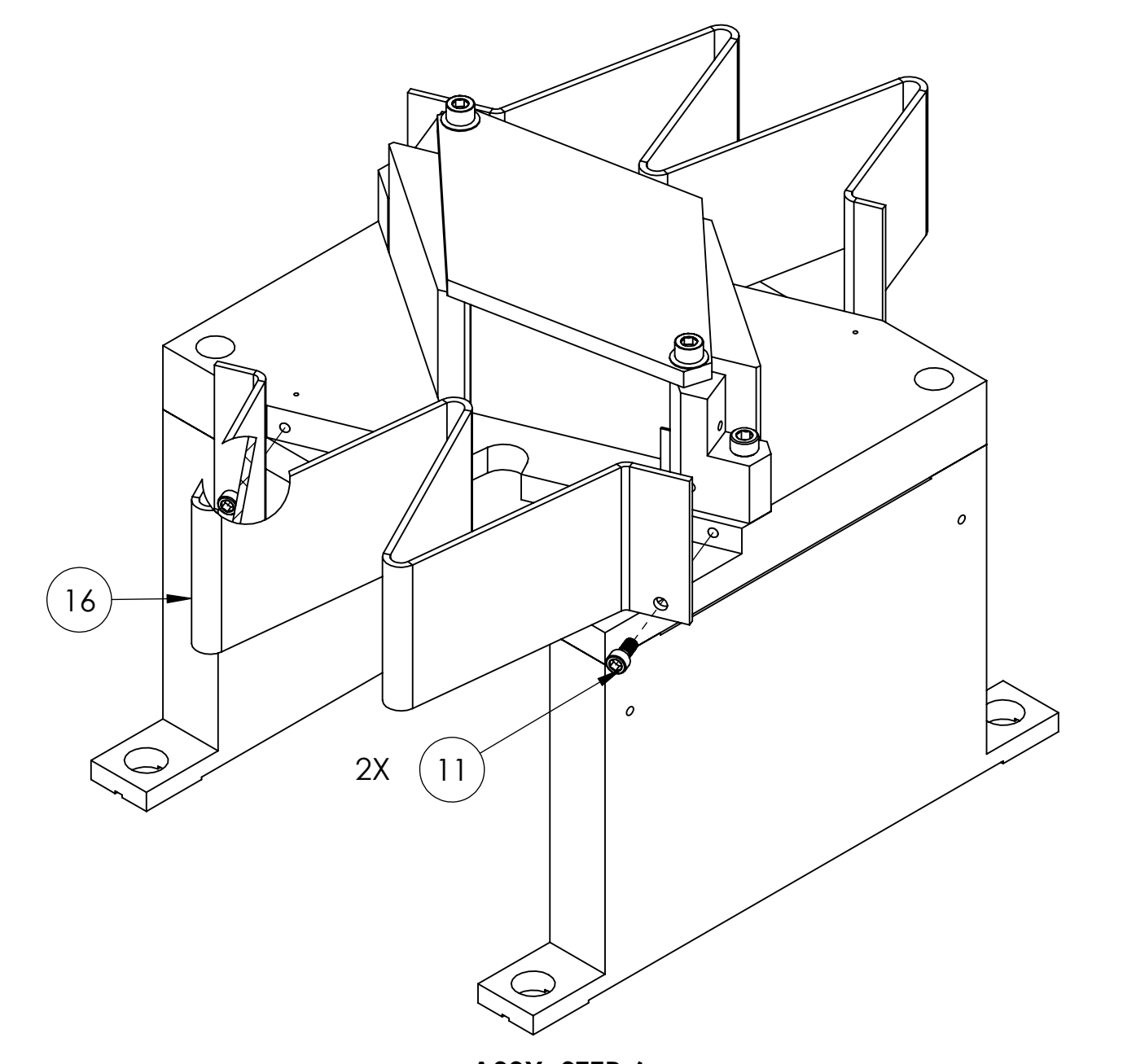
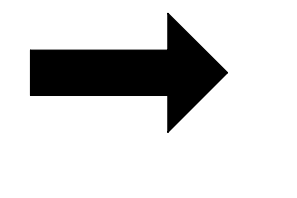
ASSY. STEP 3



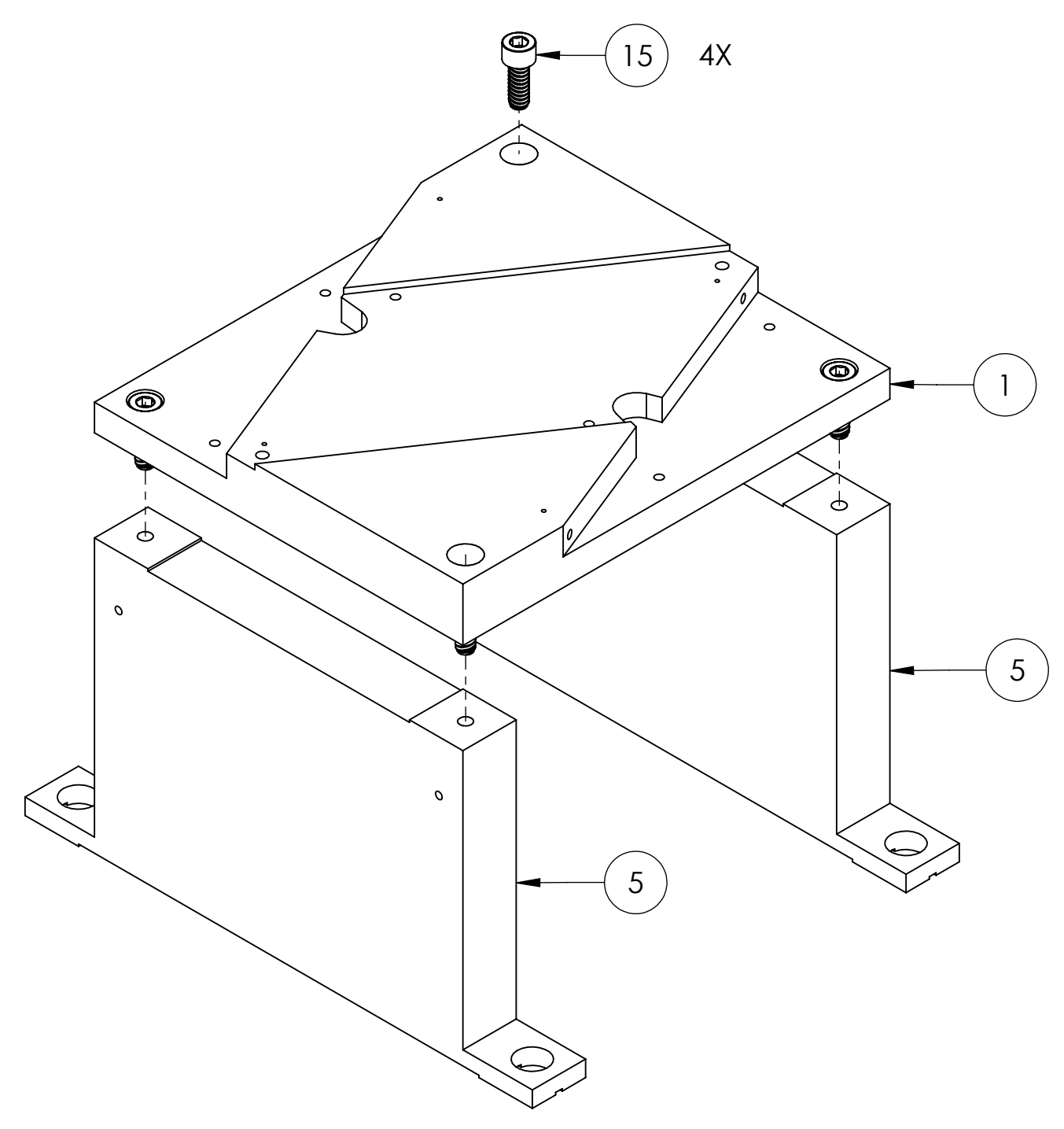
ASSY. STEP 4



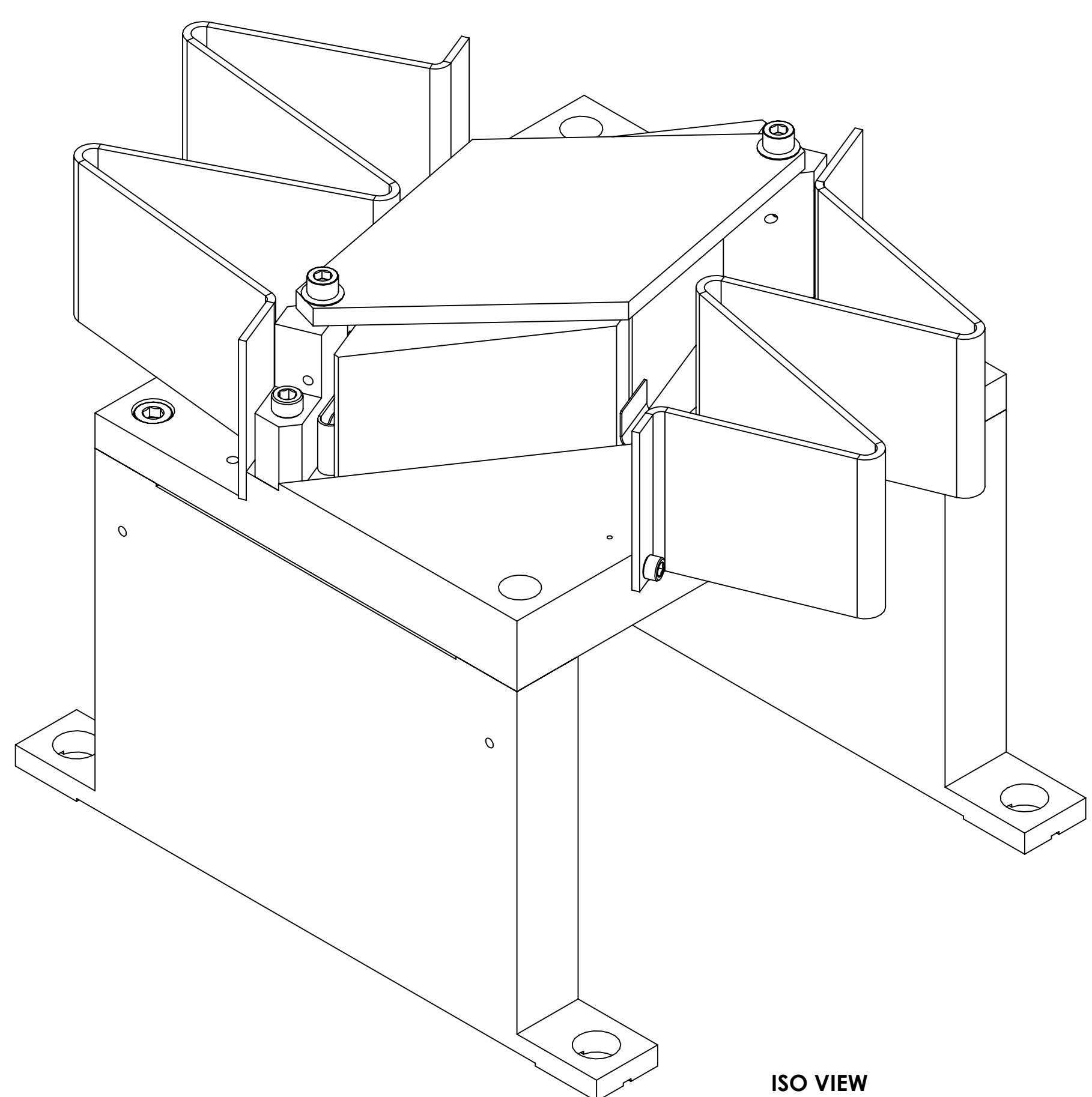
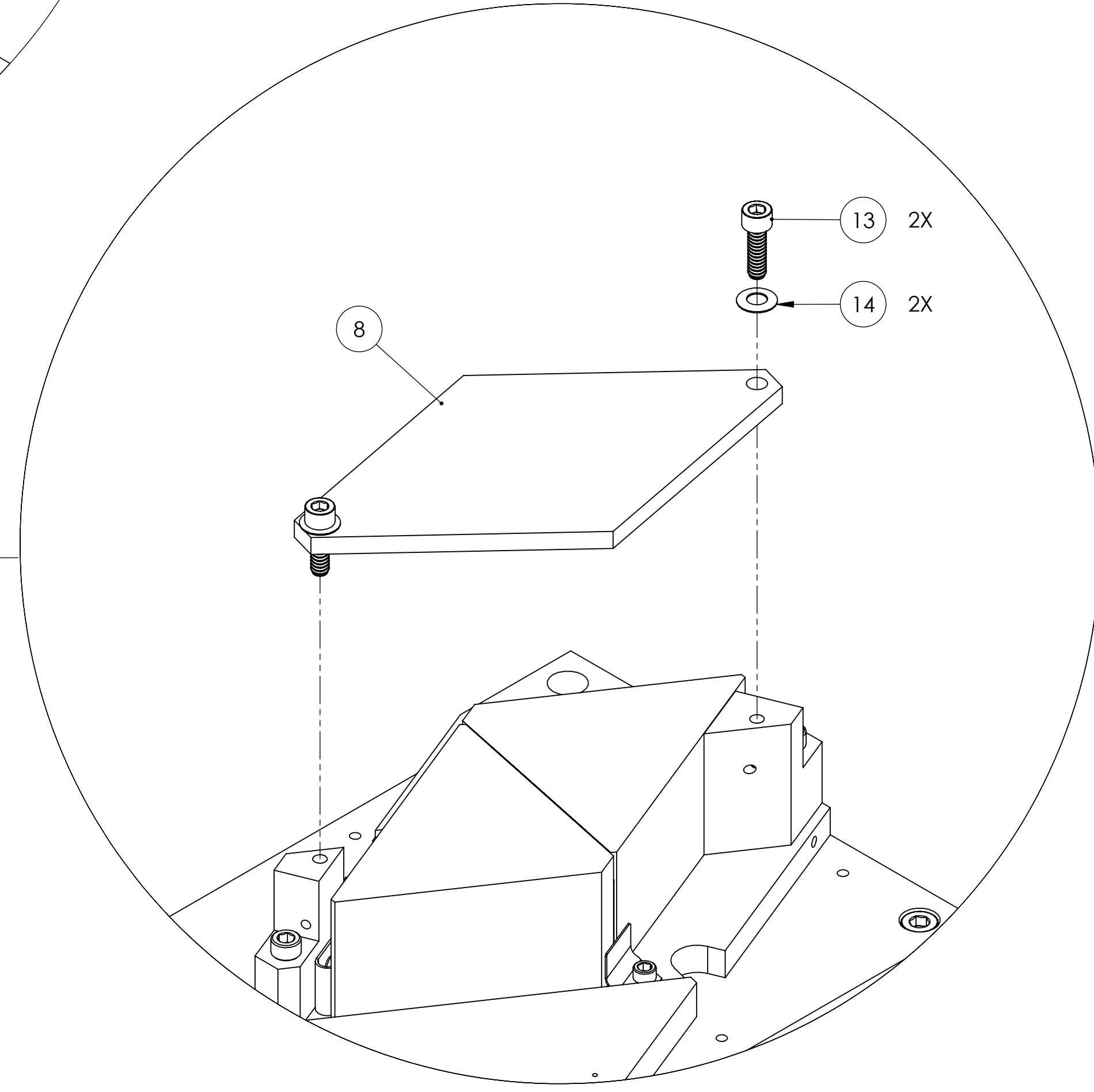
ASSY. STEP 5



ASSY. STEP 6



ASSY. STEP 1



ISO VIEW

ITEM NO.	PART NUMBER	DESCRIPTION	MATERIAL	QTY.
17	D1100258	OUTPUT FARADAY ISOLATOR BAFFLE (opposite)	18 GAUGE 304 SSSL	1
16	D1100247	OUTPUT FARADAY ISOLATOR BAFFLE	18 GAUGE 304 SSSL	1
15	C-606-N	Head Cap Screw 300 Series SS, 6-32 Thrd, 3/8" Length, MS 16995-17	300 SSSL	4
14	9713K53	Disc Spring_Stainless Steel Belleville, .125 ID, .250 OD, .009 Thick	304 SSSL	2
13	92200A108	Head Cap Screw 300 Series SS, 4-40 Thrd, 3/8" Length, MS 16995-10	18-8 SSSL	2
12	C-412-N	Head Cap Screw 300 Series SS, 4-40 Thrd, 3/4" Length	300 SSSL	2
11	92200A076	Head Cap Screw 300 Series SS, 2-56 Thrd, 3/16" Length, MS 16995-1	300 SSSL	6
10	BU-203-N	18-8 SS Button Head Socket Cap Screw 2-56 Thread, 3/16" Length	18-8 SSSL	1
9	D0900619	CLIP	304 SSSL	2
8	D0900618	OPTICAL PRISM TOP PLATE	6061-T6 Al	1
7	D1001861	U-SPRING	304 SSSL	1
6	D1001860	SPRING BLOCK_RH	6061-T6 Al	1
5	D1001862	PRISM BASE SUPPORT	6061-T6 Al	2
4	D1001863	OPTICAL PRISM SPACER	304 SSSL	1
3	D0900617	OPTICAL PRISM	CALCITE	2
2	D1001859	FIXED STOP_RH	6061-T6 Al	1
1	D0900620	PRISM MOUNT BASE_RH	6061-T6 Al	1

NOTES AND TOLERANCES: (UNLESS OTHERWISE SPECIFIED)

**LIGO** CALIFORNIA INSTITUTE OF TECHNOLOGY  
MASSACHUSETTS INSTITUTE OF TECHNOLOGY

SYSTEM: ADVANCED LIGO SUB-SYSTEM: AOS

MATERIAL: N/A FINISH: N/A UNFIN

DESIGNER: TQ: NGUYEN 19 JUL 2010 SIZE: DWG. NO. E D0900615 REV. v5

DRAFTER: TQ: NGUYEN 23 AUG 2010

CHECKER: M: SMITH

APPROVAL: D: COYNE

SCALE: 1:1 PROJECTION:

PARTS LIST

PRISM MOUNT ASSY\_RH

NEXT ASSY: D0900623

SHEET 1 OF 1