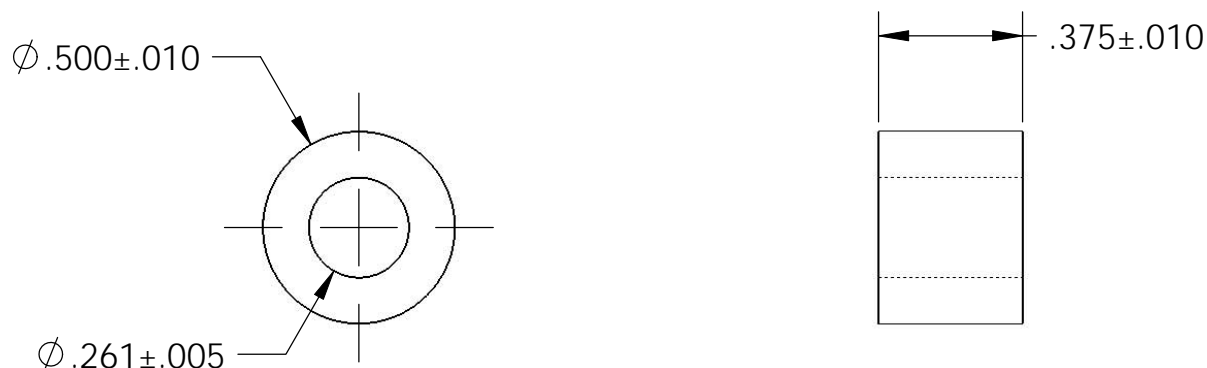
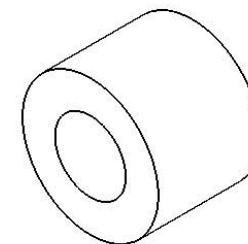


NOTES CONTINUED:

⑤ BAG ALL ITEMS INDIVIDUALLY AND TAG EACH BAG WITH THE PART NUMBER, REVISION, AND QUANTITY. EXAMPLE: DXXXXXX-VY, QTY: TBD.

REV.	DATE	DCN #	DRAWING TREE #
v1	16 APR 2009	E0900106	E0900052
-	-	-	-
-	-	-	-



NOTES AND TOLERANCES: (UNLESS OTHERWISE SPECIFIED)

DIMENSIONS ARE IN INCHES

TOLERANCES:
XX ± .01
XXX ± .005

ANGULAR ± 0.5°

1. INTERPRET DRAWING PER ASME Y14.5-1994.
2. REMOVE ALL SHARP EDGES, R.02 MIN.
3. DO NOT SCALE FROM DRAWING.
4. ALL MACHINING FLUIDS SHALL BE WATER SOLUBLE AND FREE OF SULFUR, CHLORINE AND SILICONE, SUCH AS CINCINNATI MILACRON'S CIMTECH 410.

MATERIAL 6061-T6 Al **FINISH** 63 μinch



SYSTEM ADVANCED LIGO **SUB-SYSTEM** SUS

NEXT ASSY D0900643

PART NAME STOP SLEEVE, OMC LIFTING JACK

DESIGNER K. MAILAND	01 JUN 2008	SIZE A	DWG. NO. D0900593	REV. v1
DRAFTER M. MEYER	16 APR 2009			
CHECKER D. BRIDGES	16 APR 2009			
APPROVAL		SCALE: 2:1	PROJECTION:	SHEET 1 OF 1