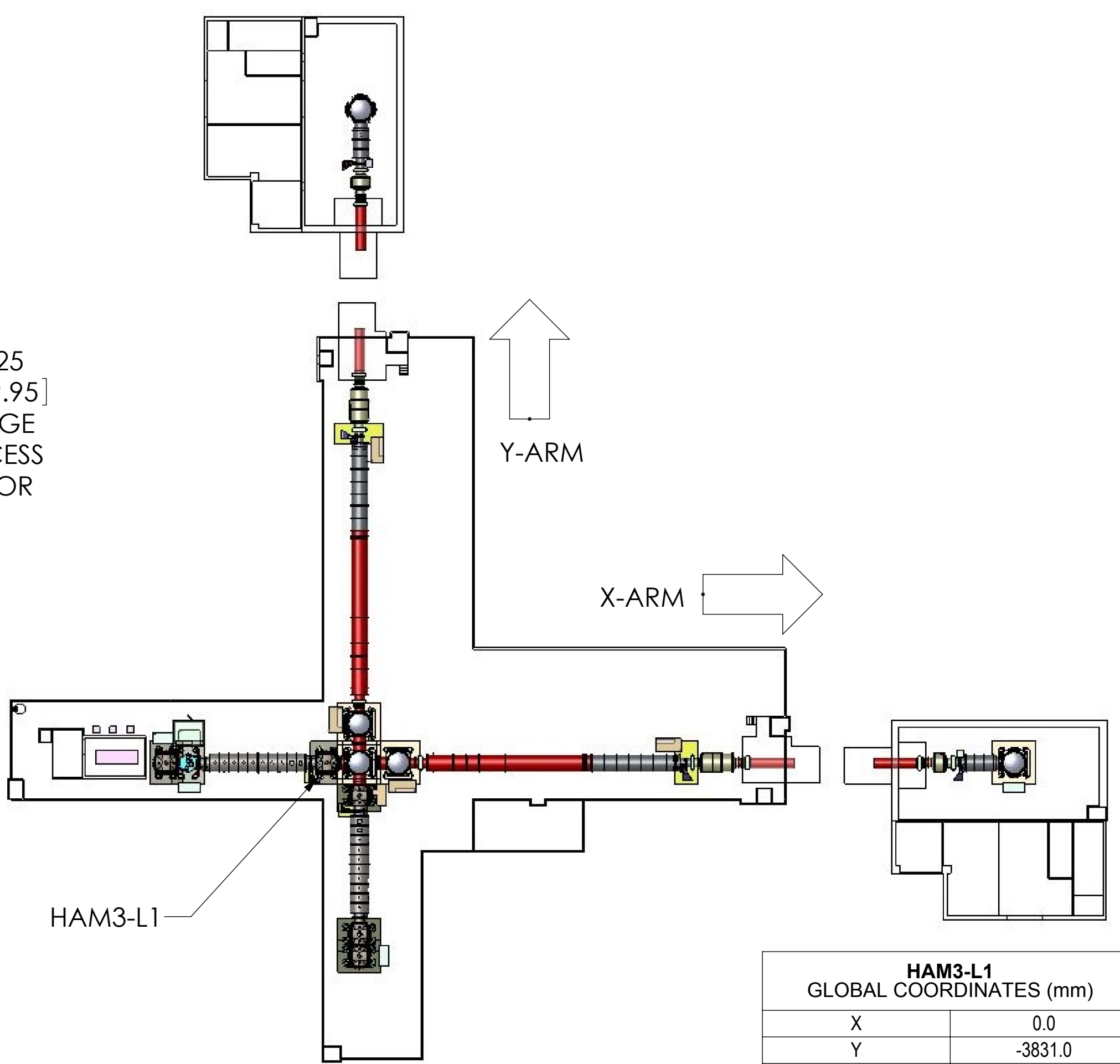
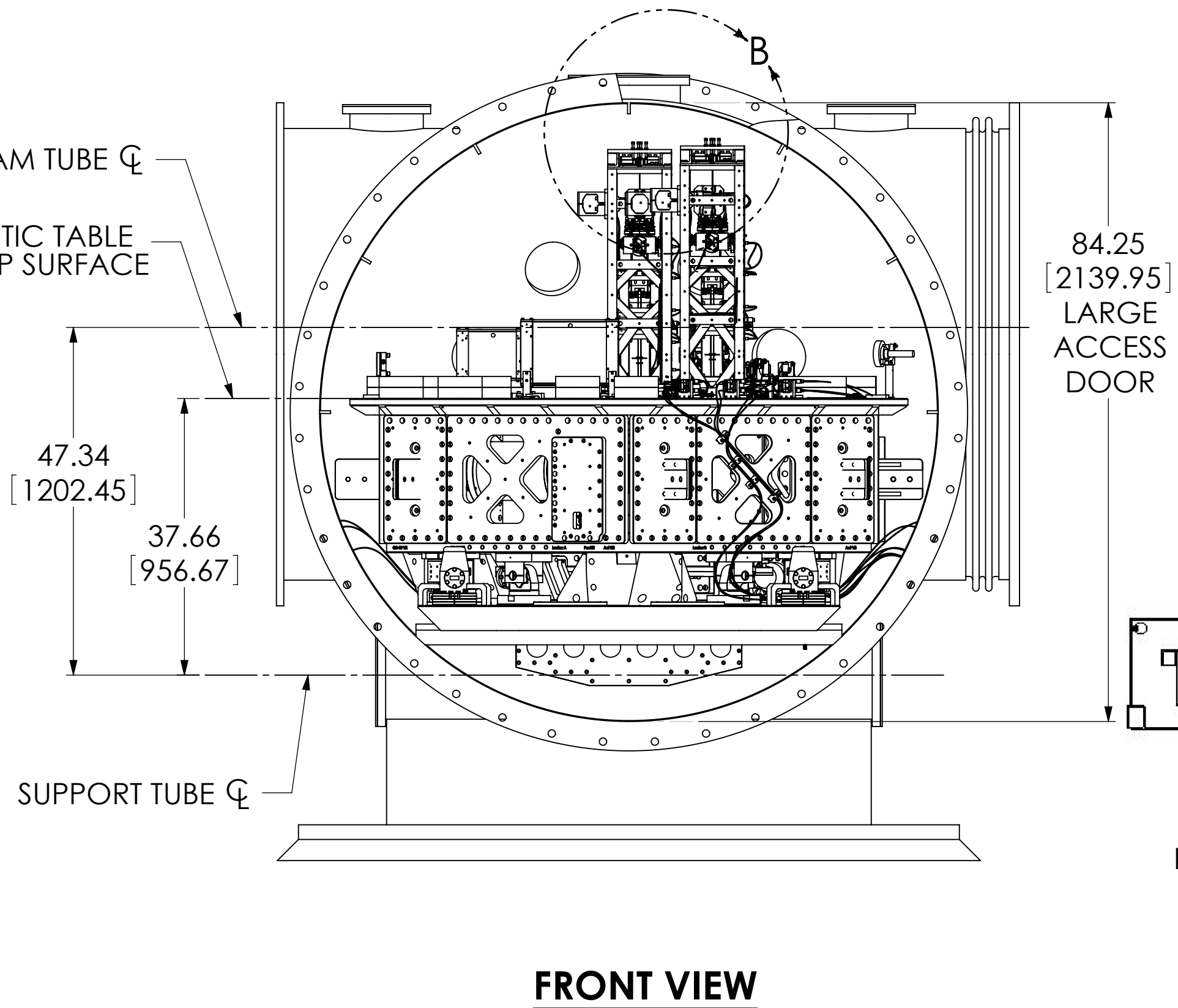
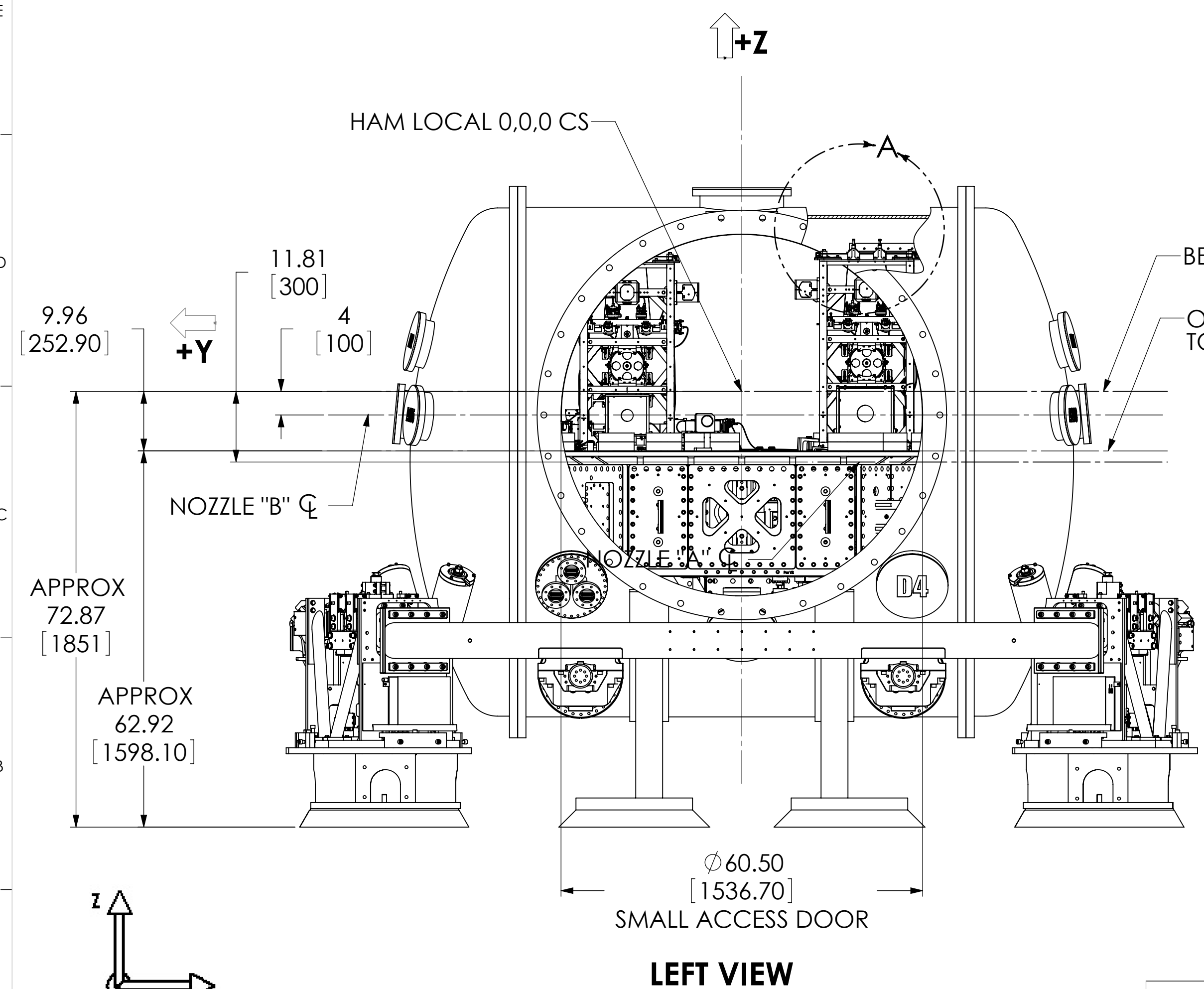
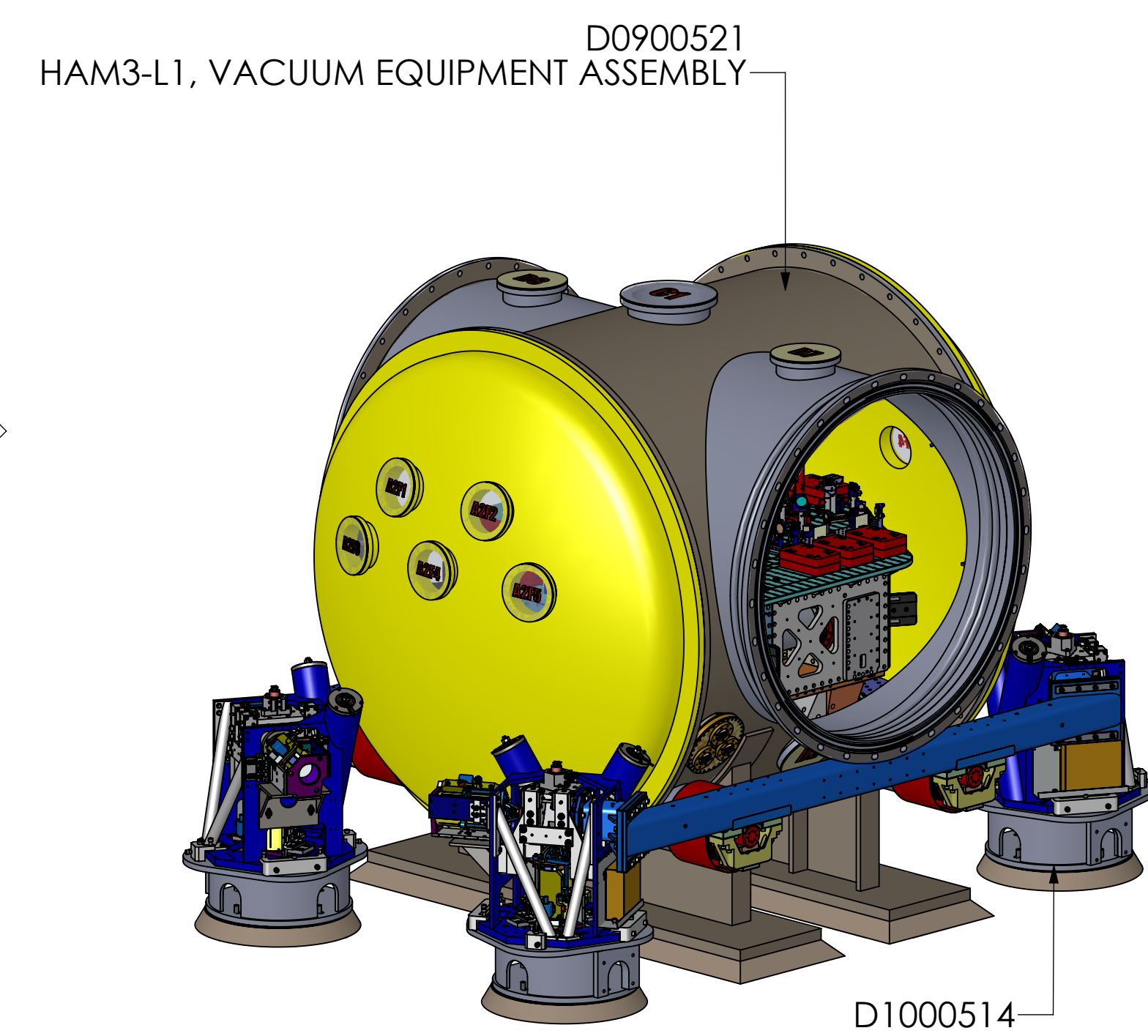
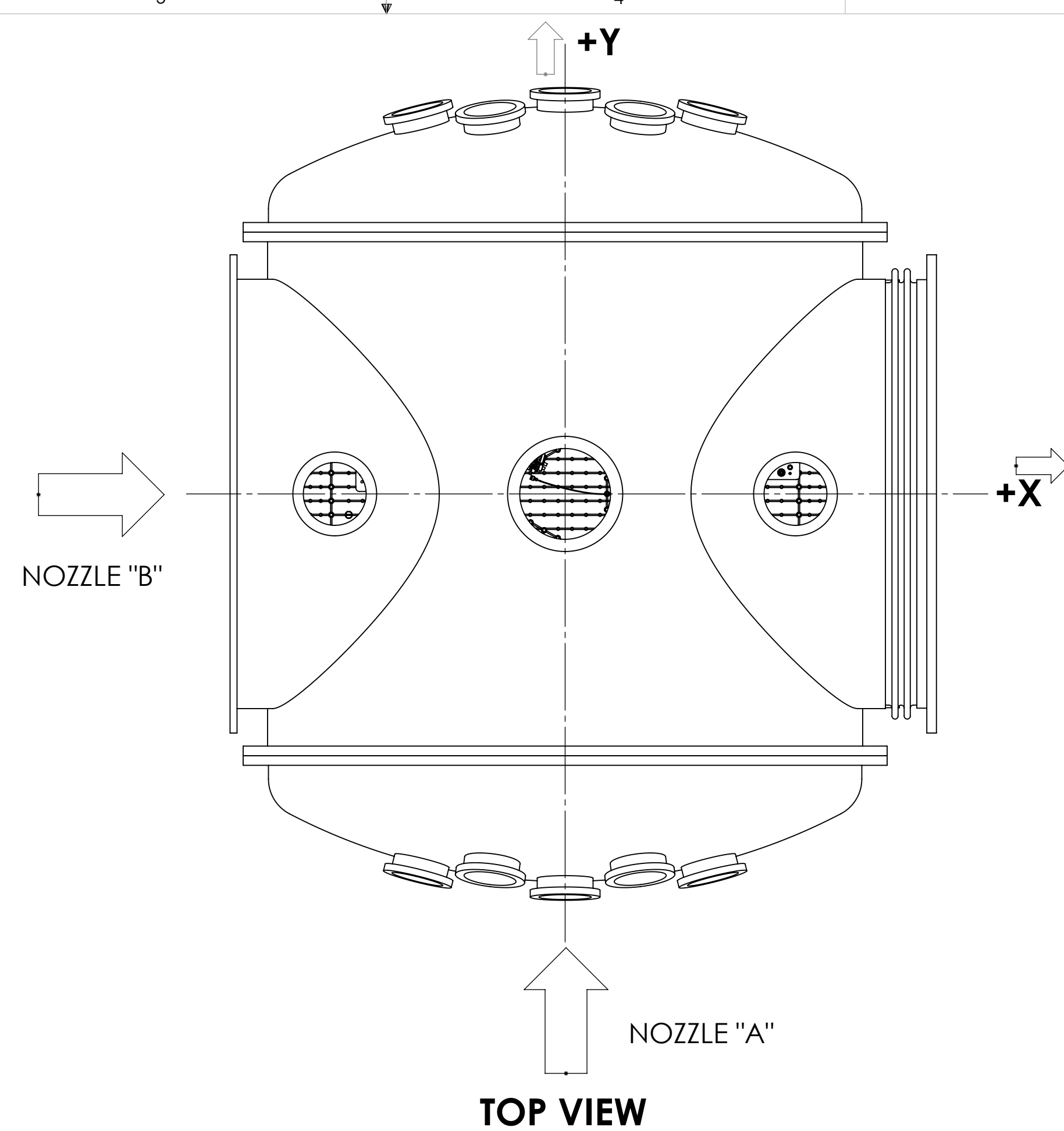
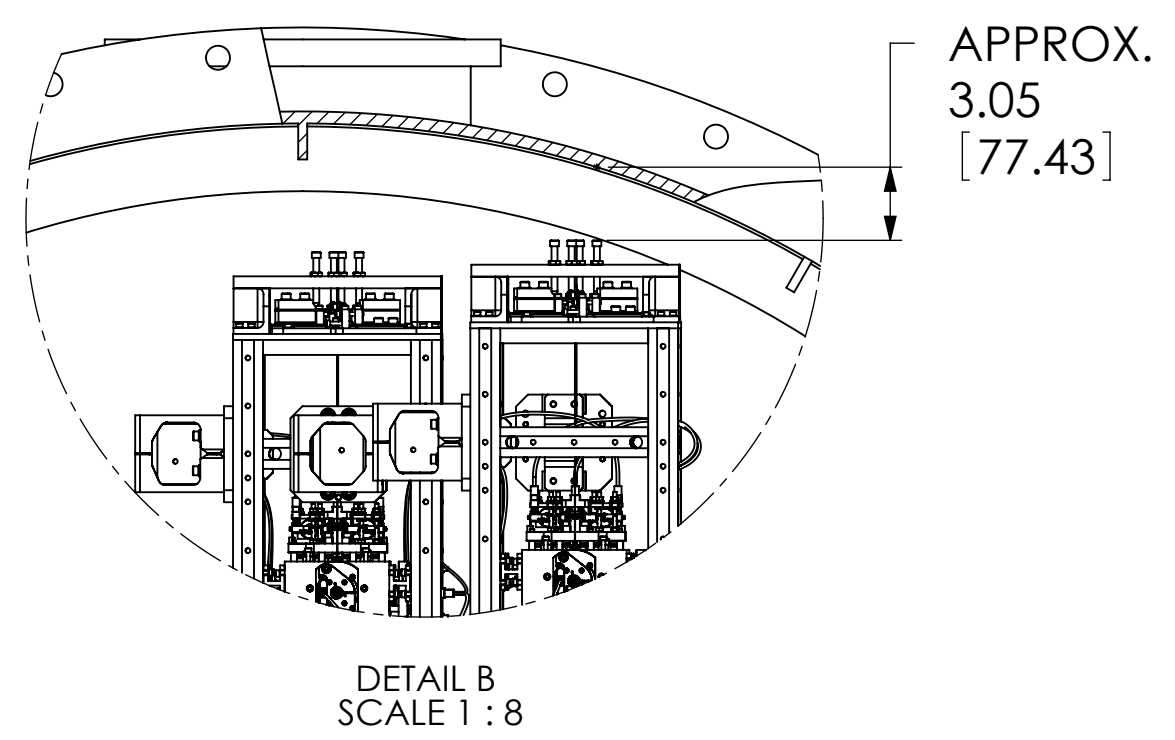
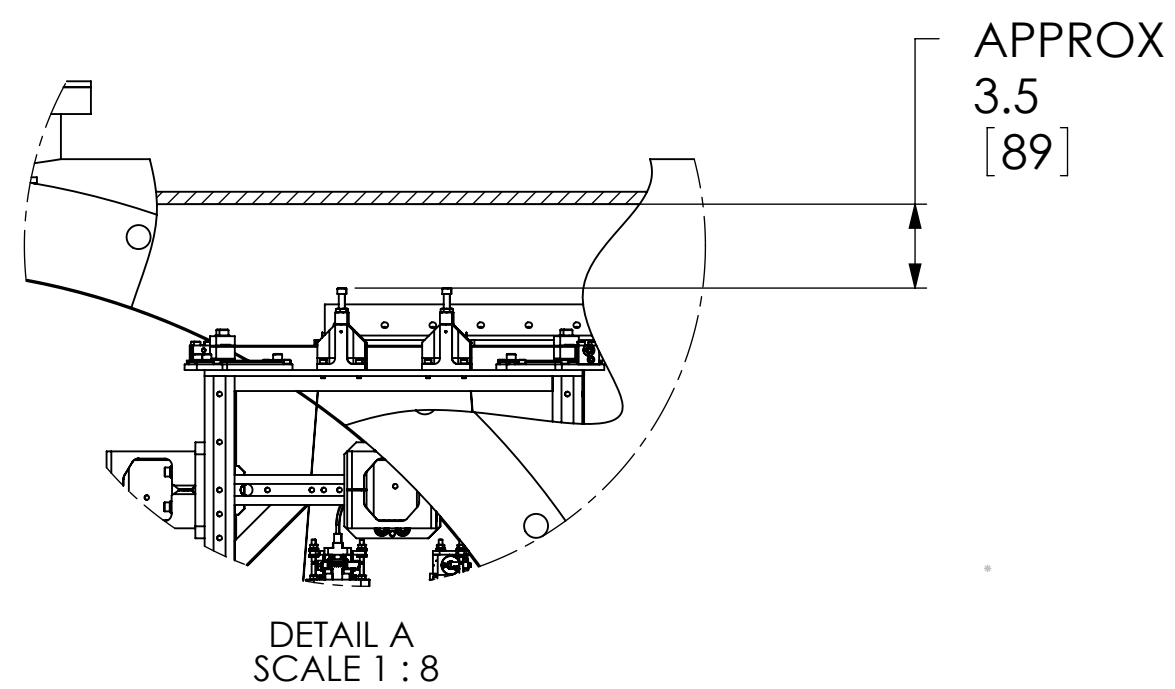
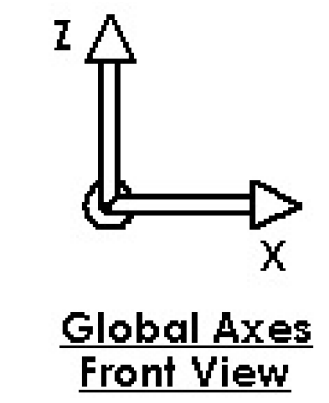


REV.	DATE	DCH #	DRAWING TREE #
v12	06 NOV 2013	E1300817-x0	
v13	19 DEC 2013	E1300972-x0	



HAM3-L1 GLOBAL COORDINATES (mm)	
X	0.0
Y	-3831.0
Z	0.0



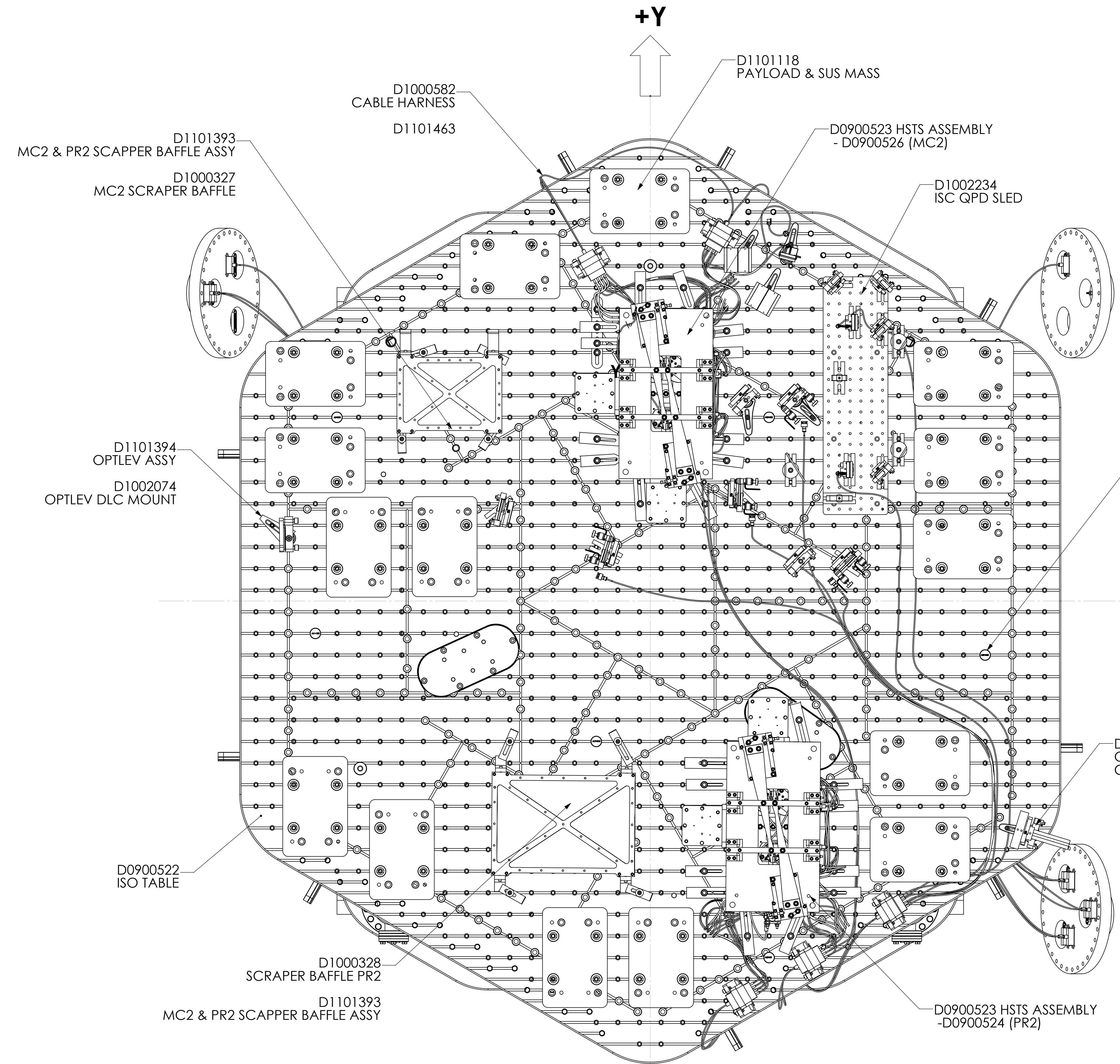
NOTES AND TOLERANCES: (UNLESS OTHERWISE SPECIFIED)				LIGO CALIFORNIA INSTITUTE OF TECHNOLOGY MASSACHUSETTS INSTITUTE OF TECHNOLOGY		PART NAME															
MATERIAL		FINISH		SYSTEM		SUB-SYSTEM		DESIGNER		DRAFTER		CHECKER		APPROVAL		SIZE		DWG. NO.		REV.	
--		-- μ inch		ADVANCED LIGO		SYS		ED CHAVEZ		27 JUL 2009		SEE DCC		SEE DCC		D		D0900520		v13	
				NEXT ASSY				SEE DCC		SEE DCC		SCALE: 1:16		PROJECTION:		SHEET 1 OF 4					

D:\0900520\Adv-LIGO Systems\HAM3-L1 Top Level Chamber Assembly\ALL PART PDM REV. X-081 DRAWING PDM REV. X-014

8 7 6 5 4 3 2 1

H
G
F
E
D
C
B
A

D0900520 AdvLIGO Systems: HAM3-L1 Top Level Chamber Assembly: ALL PART PDM REV: X-081, DRAWING PDM REV: X-014



SEE DRAWING D1101309 FOR POSITIONS OF FIDUCIALS

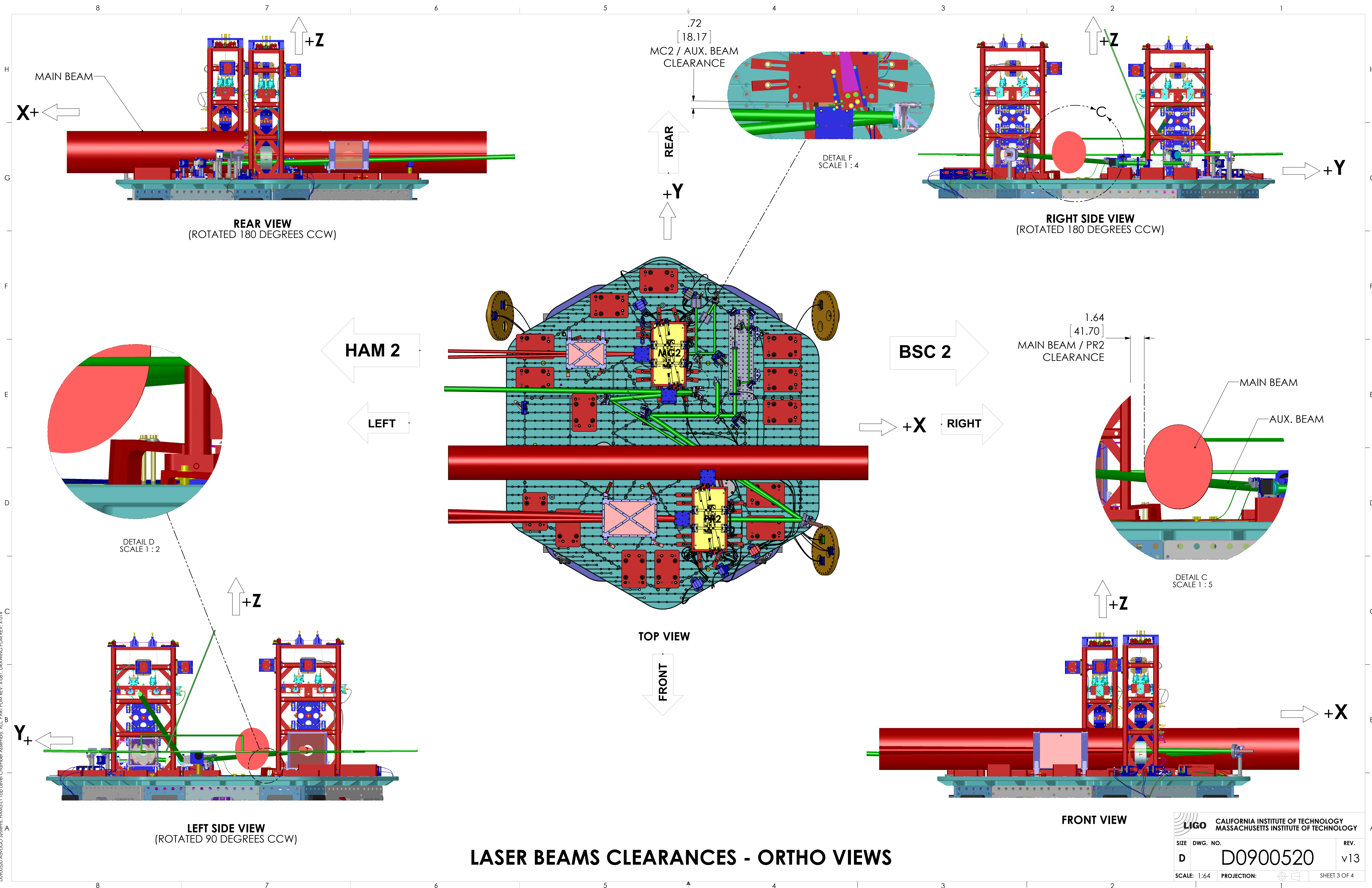
ITEM NO.	PART NUMBER	DESCRIPTION	QTY.
12	D1201242	AdvLIGO SEI HAM3-L1, XYZ Local CS for ISC BLK GLASS BEAM DUMPS	1
11	D1101309	FIDUCIAL KIT, OPTIC TABLE, 1/4-20	
10	D1101463	CABLE HARNESS ROUTING, HAM 3	1
9	D1101394	AdvLIGO SEI HAM3-L1, XYZ Local CS for OptLev DLC Component	1
8	D1002235	AdvLIGO SEI HAM3-L1, XYZ LOCAL CS for IO Optic Mount Components	1
7	D1002234	AdvLIGO SEI HAM3-L1, XYZ Local for ISC Components	1
6	D1101118	AdvLIGO HAM3-L1 ISI Table, Payload & Suspended Mass Assembly	1
5	D1000514	HEPI ASSEMBLY, HAM, aLIGO SEI	1
4	D1101393	AdvLIGO SUS HAM3-L1, XYZ Local for MC2 and PR2 Scraper Baffle	1
3	D0900523	AdvLIGO SUS HAM3-L1, XYZ Local CS for HSTS (PR2,MC2)	1
2	D0900522	AdvLIGO SEI HAM3-L1, XYZ Local CS for ISO Table	1
1	D0900521	AdvLIGO VE HAM3-L1, Vacuum Equipment Assembly	1

PARTS LIST

LIGO CALIFORNIA INSTITUTE OF TECHNOLOGY
MASSACHUSETTS INSTITUTE OF TECHNOLOGY

SIZE	DWG. NO.	REV.
D	D0900520	v13
SCALE: 1:5	PROJECTION:	SHEET 2 OF 4

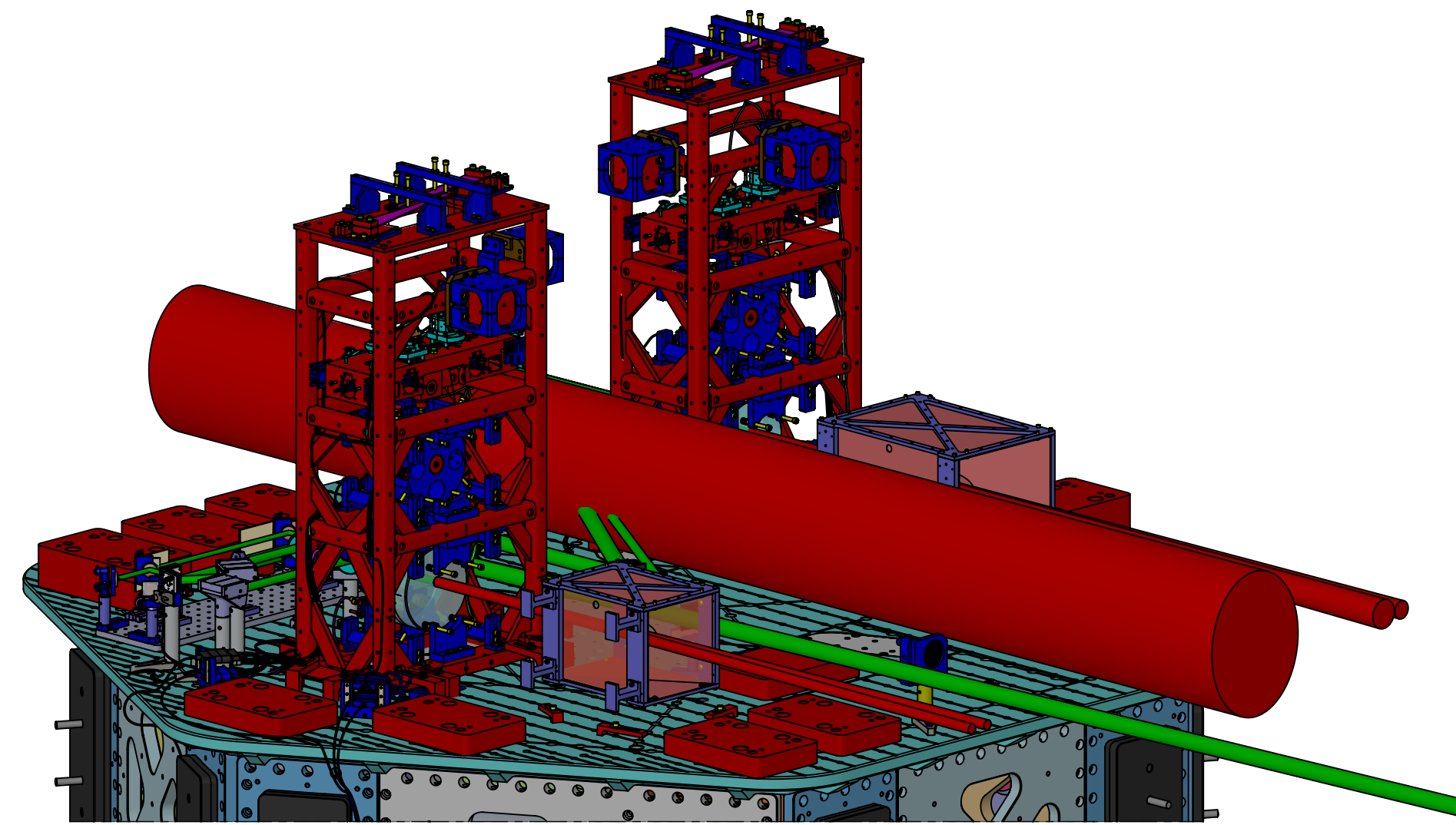
8 7 6 5 4 3 2 1



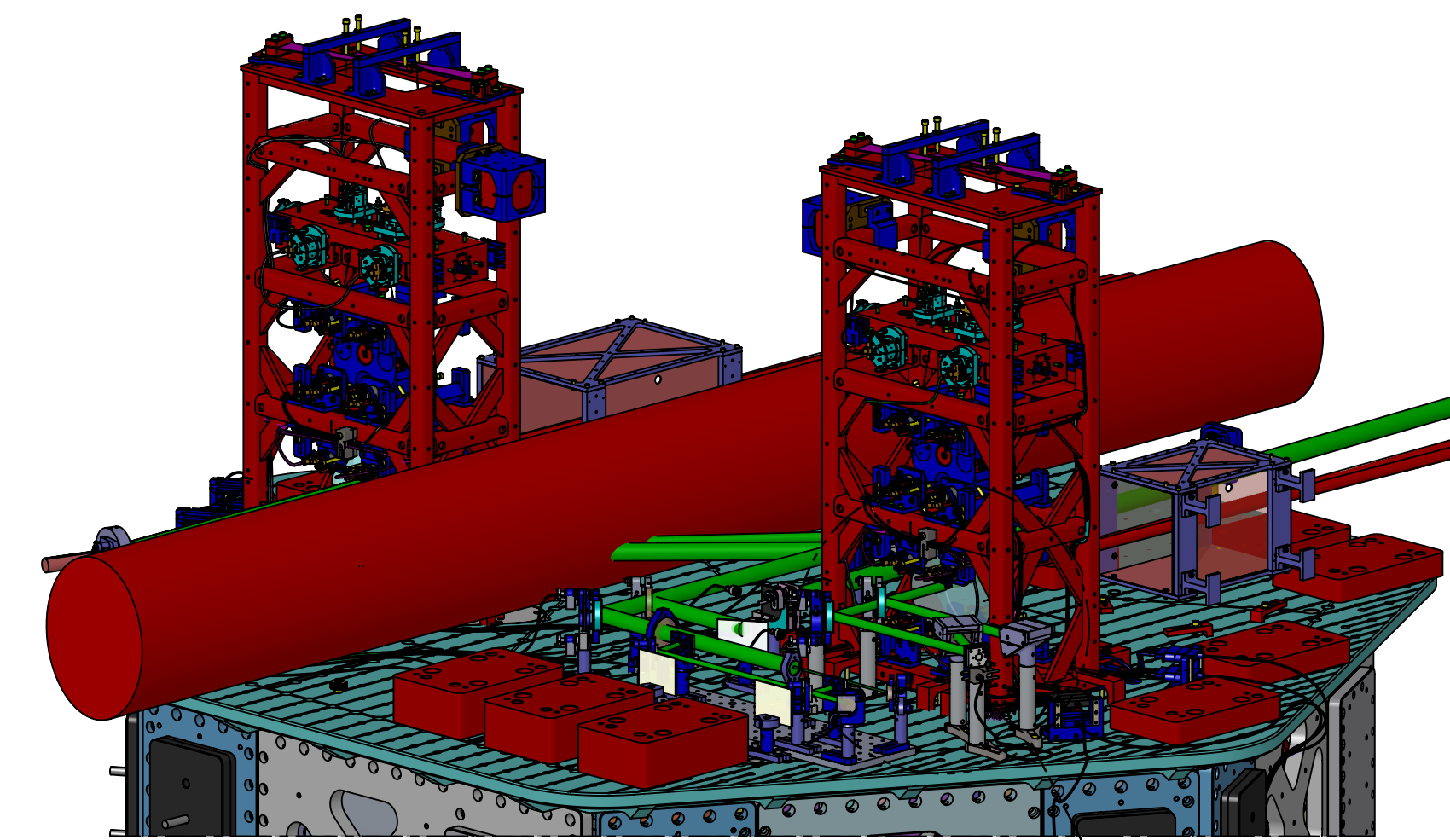
LASER BEAMS CLEARANCES - ORTHO VIEWS

CALIFORNIA INSTITUTE OF TECHNOLOGY MASSACHUSETTS INSTITUTE OF TECHNOLOGY		REV.
SIZE DWG. NO.	D0900520	v13
SCALE: 1:64	PROJECTION:	SHEET 3 OF 4

DDP00520 Asst LIGO Systems: HAM2-1 Top Level Chamber Assembly: ALL PART PDM REV: X-081 DRAWING PDM REV: X-014

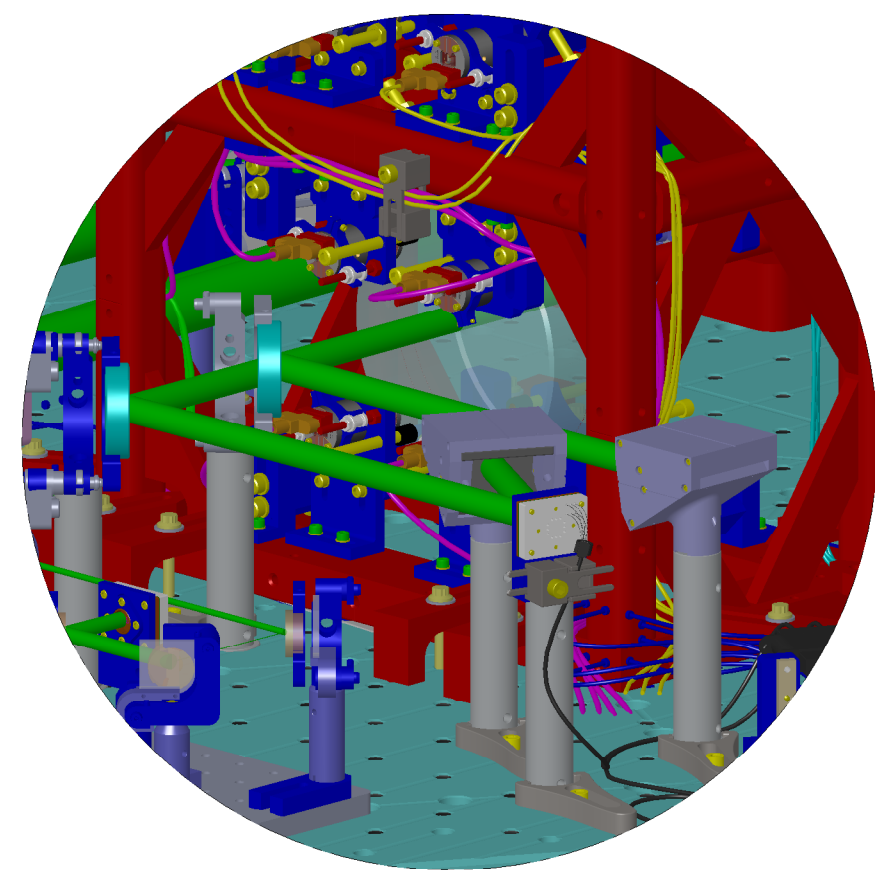


ISO REAR - LEFT

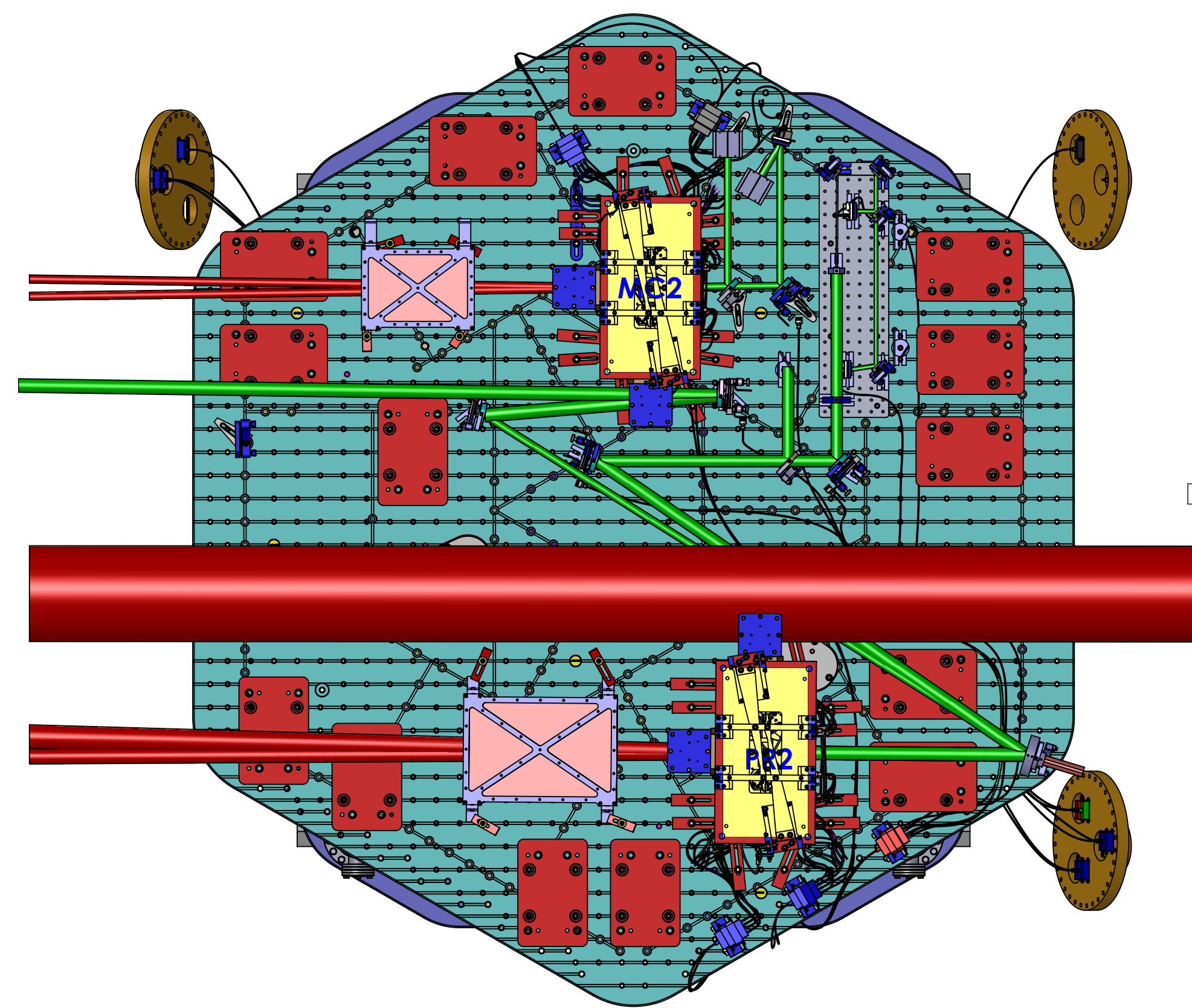


ISO REAR - RIGHT

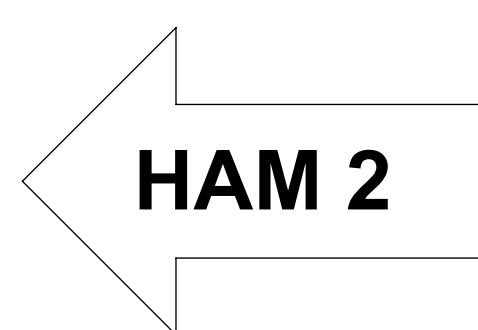
E



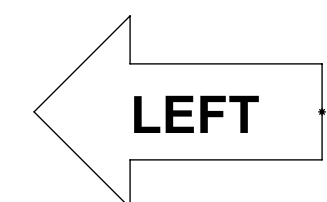
DETAIL E
SCALE 1 : 4



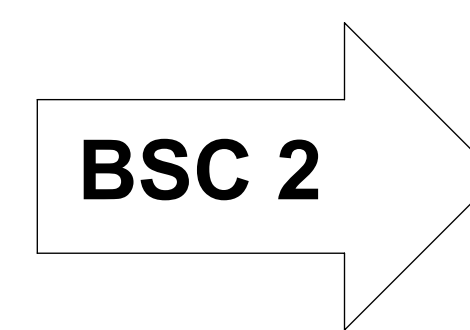
TOP VIEW



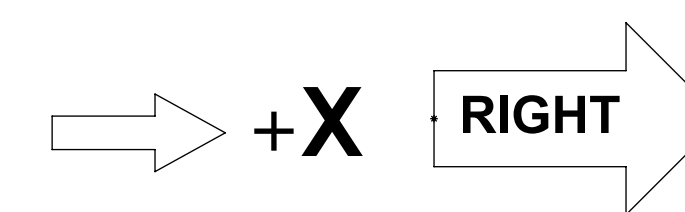
HAM 2



LEFT

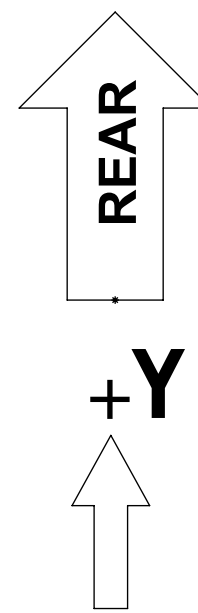


BSC 2



+X

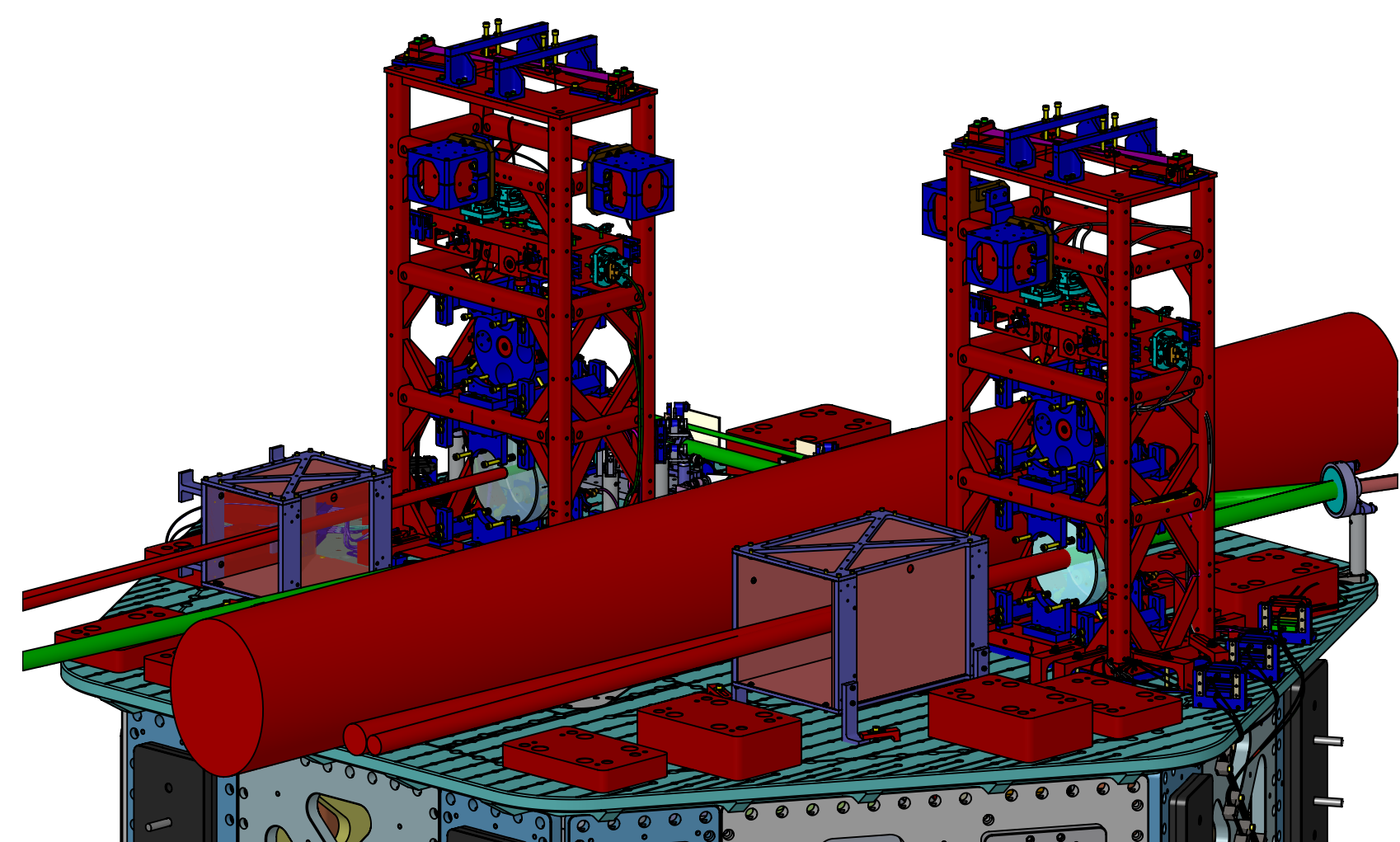
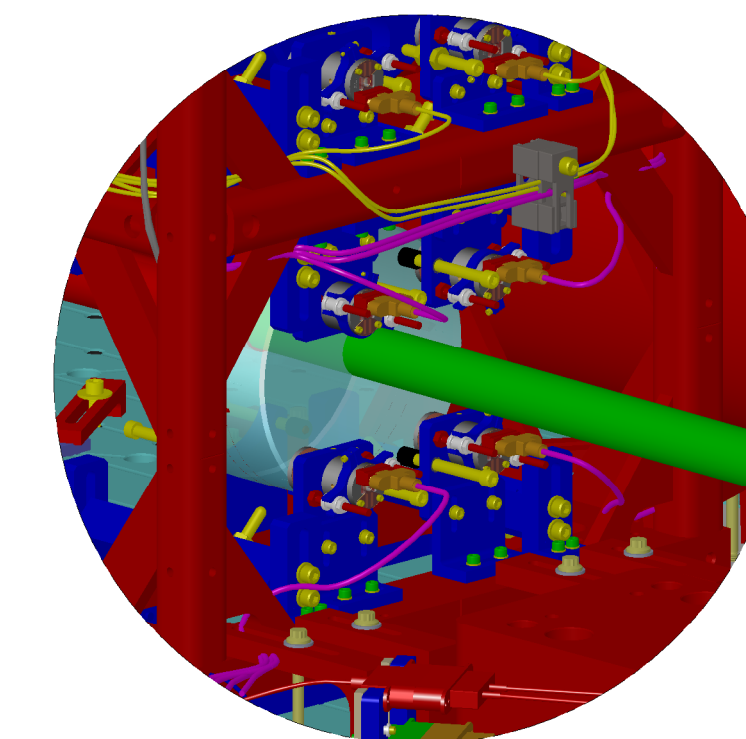
RIGHT



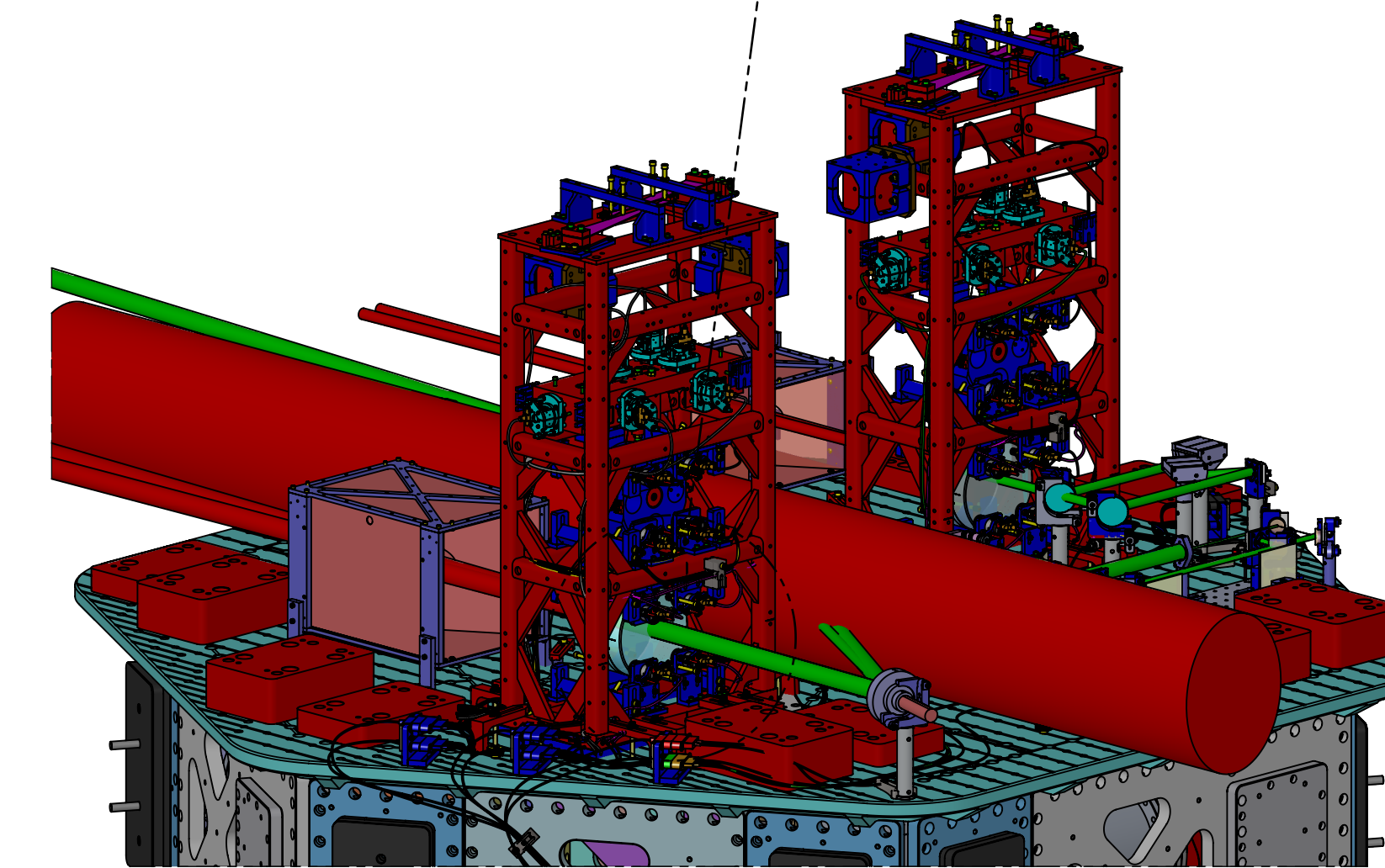
REAR

+Y

PR2 CABLES - AUX. BEAM CLEARANCE
SCALE 1 : 4



ISO FRONT - LEFT



ISO FRONT - RIGHT

LASER BEAMS CLEARANCES - ISO VIEWS

CALIFORNIA INSTITUTE OF TECHNOLOGY MASSACHUSETTS INSTITUTE OF TECHNOLOGY		REV.
SIZE DWG. NO.	D0900520	v13
SCALE: 1:64	PROJECTION:	SHEET 4 OF 4

DDP00520 Aux/IGC Systems: HAM3-L1 Top Level Chamber Assembly: ALL PART PDM REV: X-081, DRAWING PDM REV: X-014