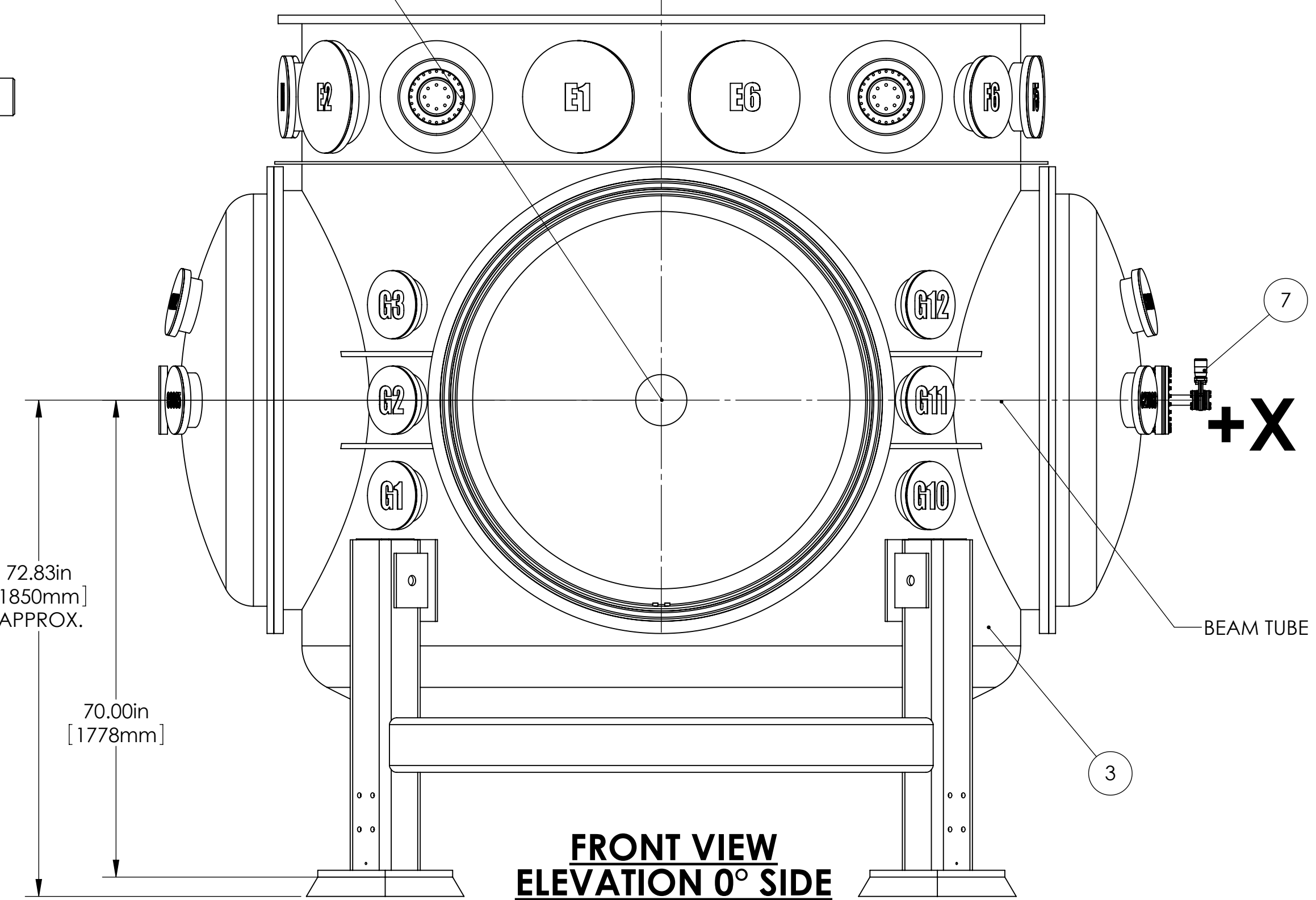
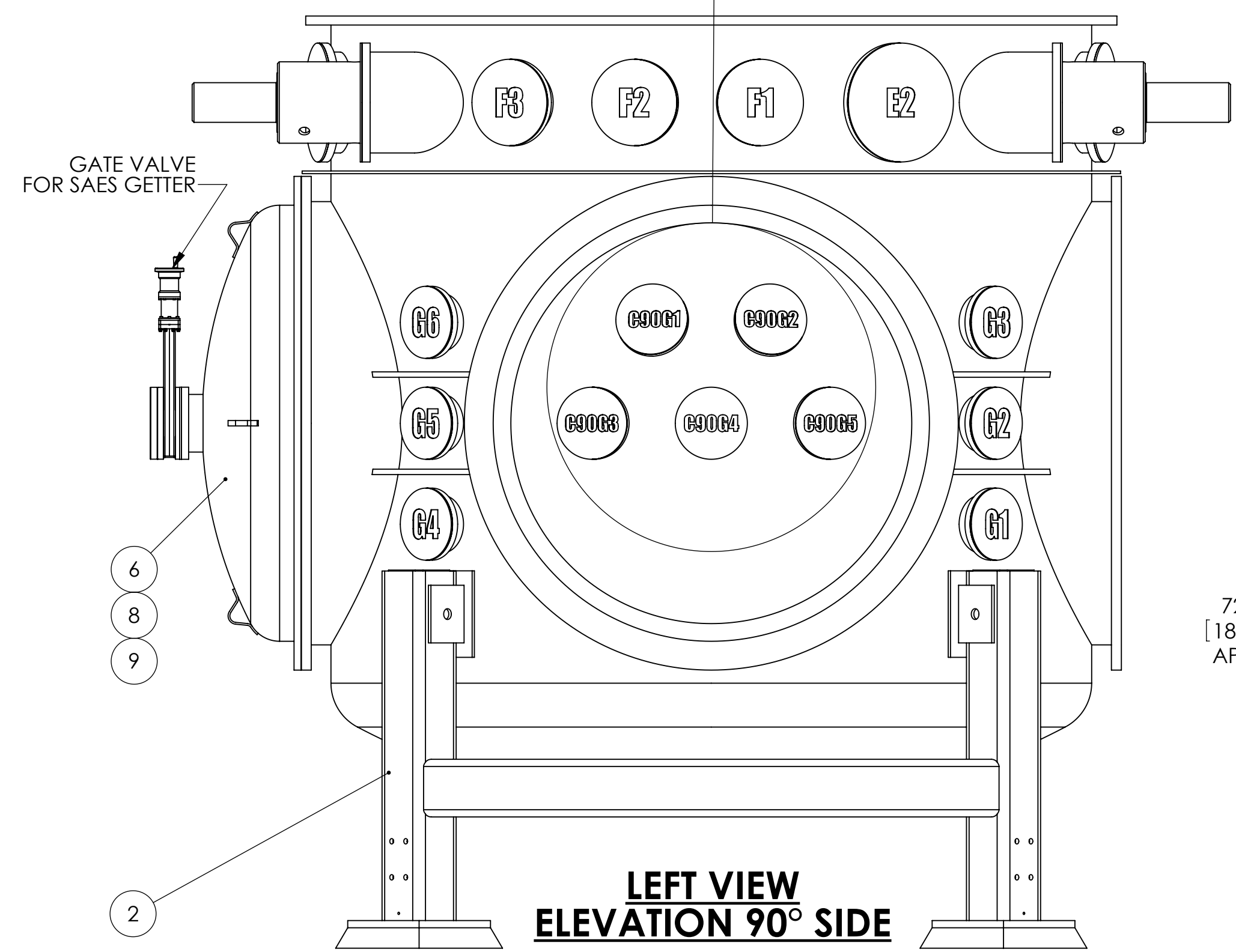
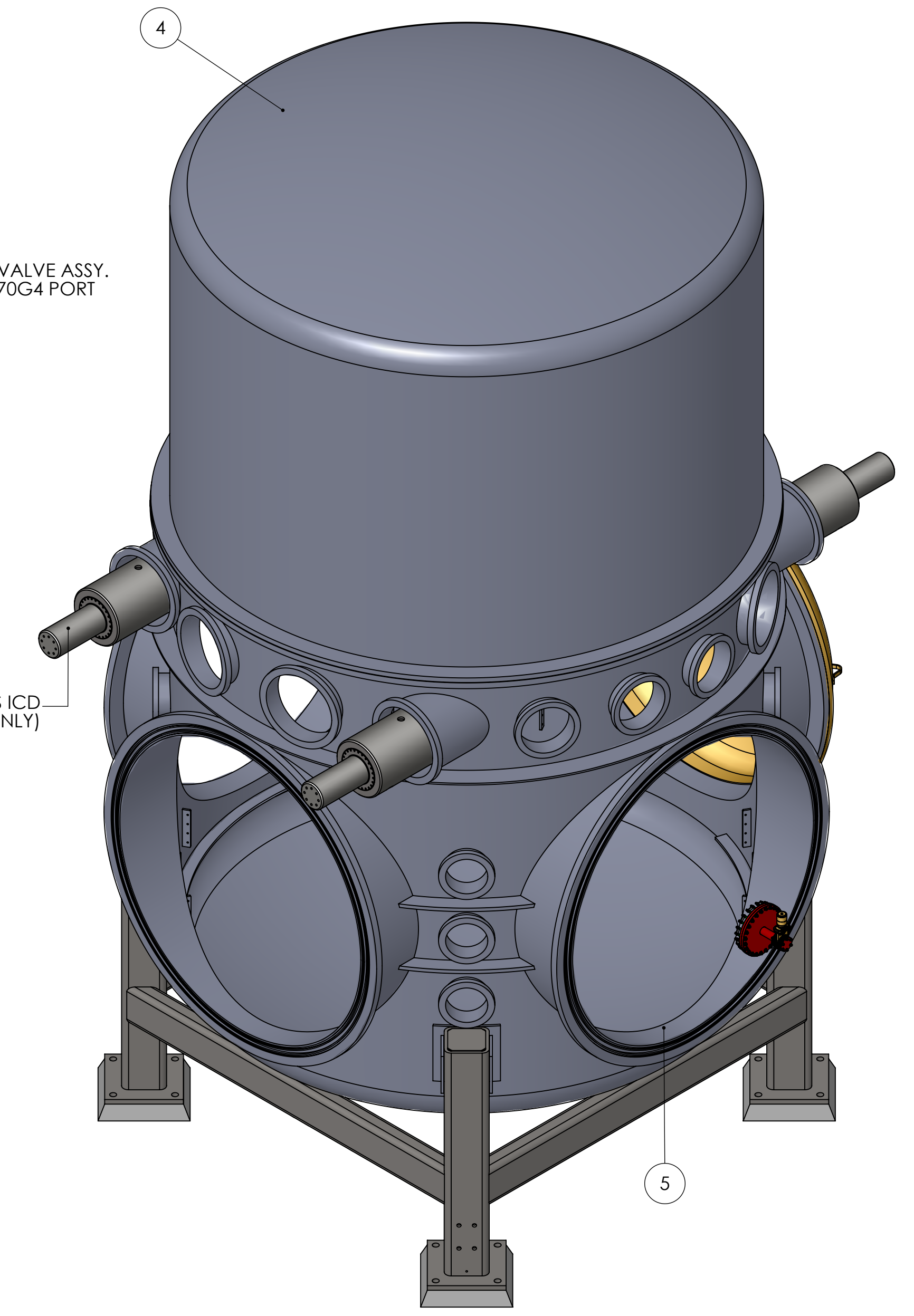
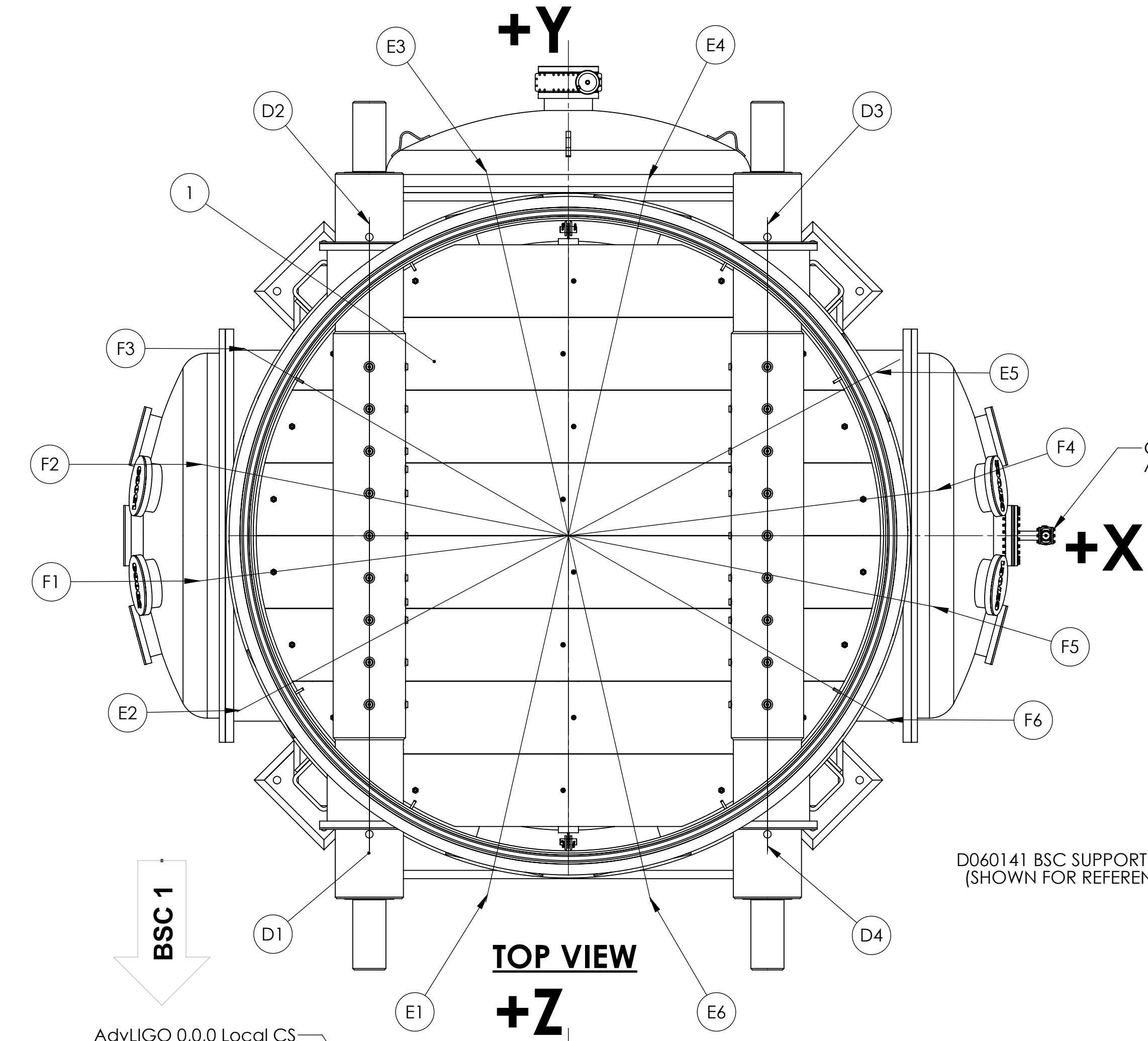
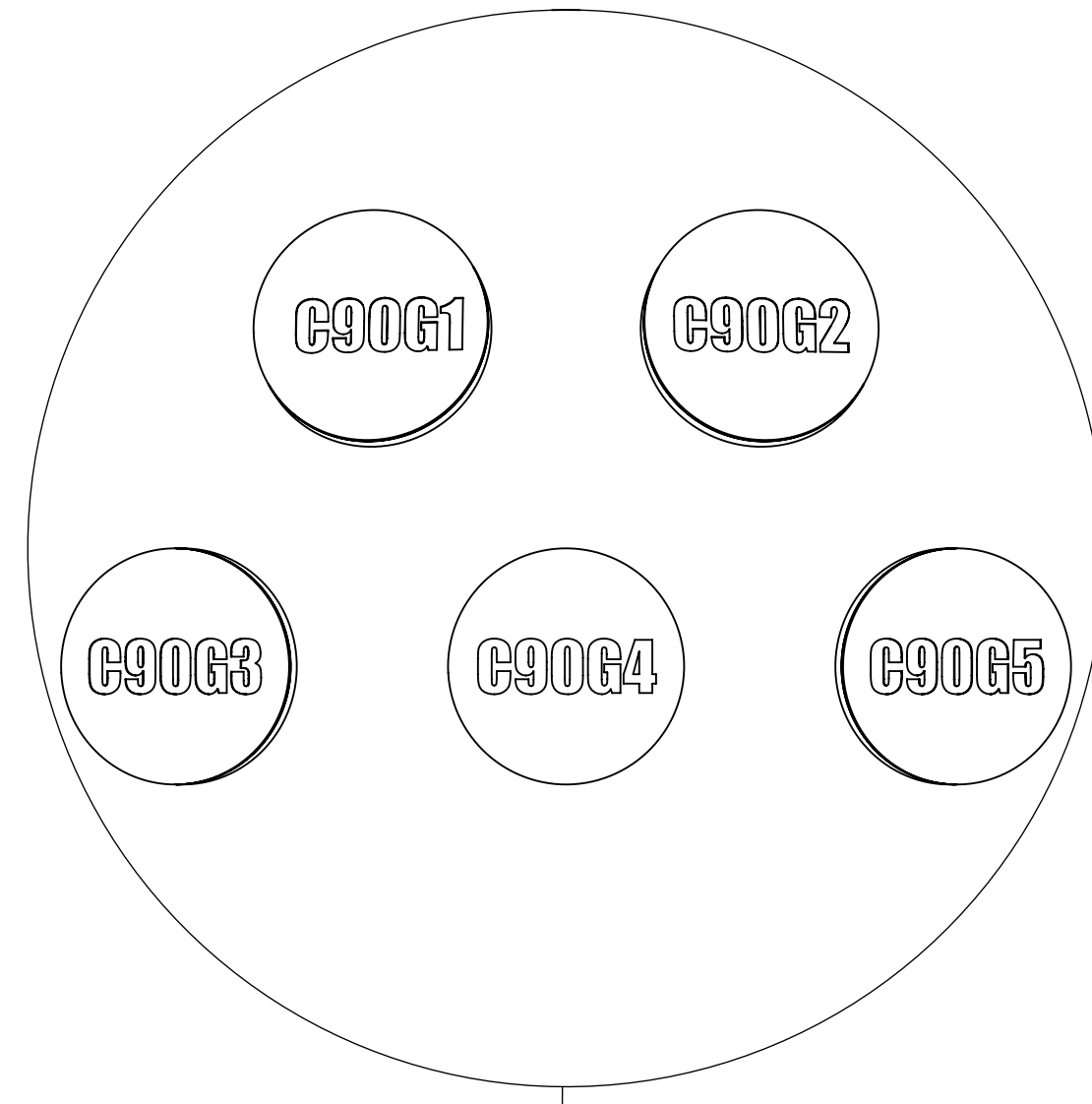


REV.	DATE	DCN #	DRAWING TREE #
v1	27 SEP 2012	-	-
v2	10 JAN 2014	E1300981-X0	-
v3	10 JUL 2015	E1500290-x0	-



ITEM NO.	PART NUMBER	DESCRIPTION	QTY.
9	110032 MDC OR EQ.	Fing, 10", Blank	1
8		Gate Valve, UHV, Manual	1
7	D1301034	aLIGO, SYS, UHV GATE VALVE ASSY.	1
6	D961145	BSC 60in Cover ICD	1
5	D060143	BSC 60in COVER ICD	2
4	D060140	BSC Upper Shell ICD	1
3	D060139	BSC Lower Shell ICD	1
2	D961107	Chamber Support Assembly, BSC, LIGO Vacuum Equipment	1
1	D961115	ALIGO, BSC FLOOR ASSY. & DETAILS, BEAM SPLITTER CHAMBER, LIGO VACUUM EQUIPMENT	1

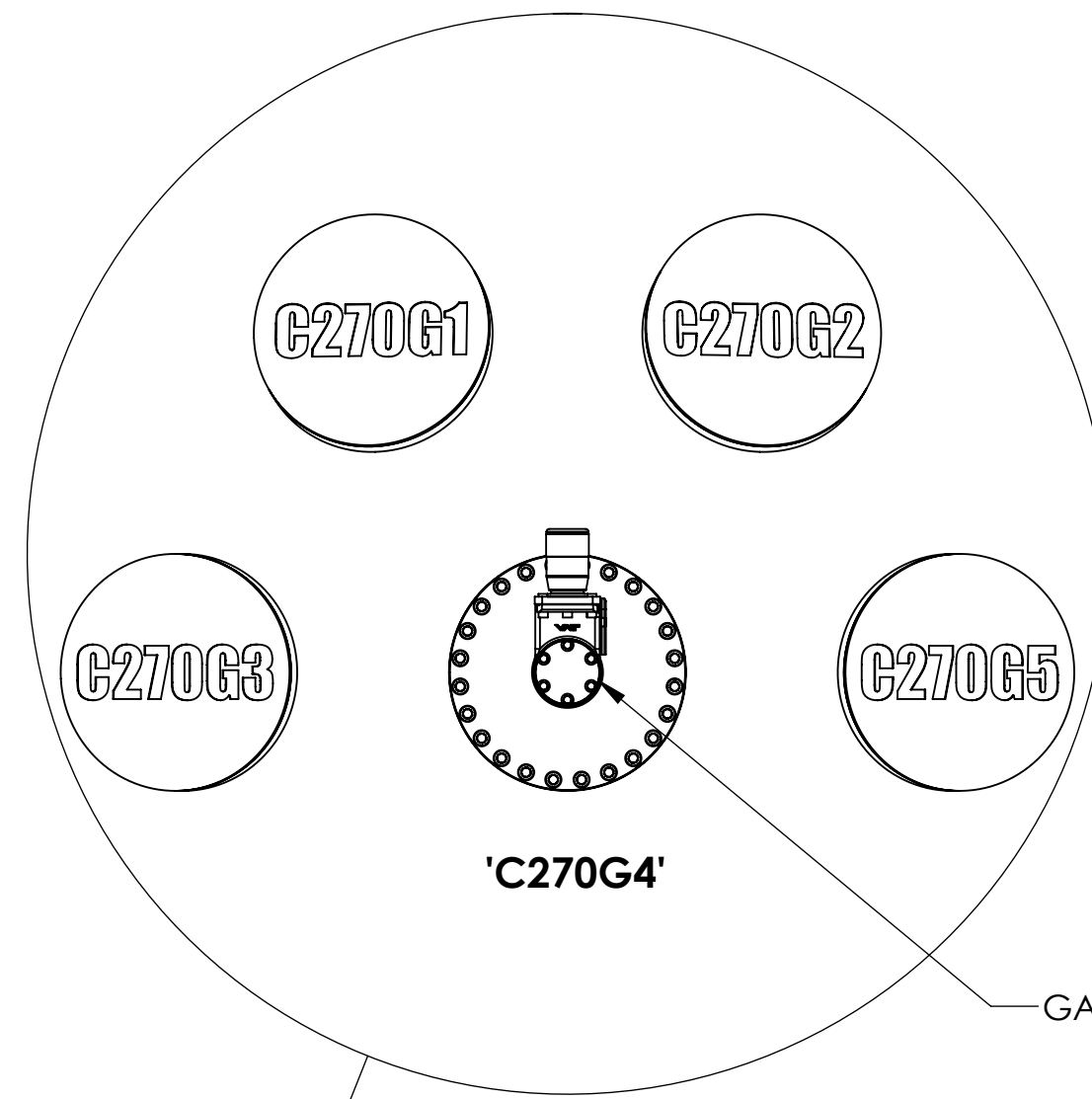
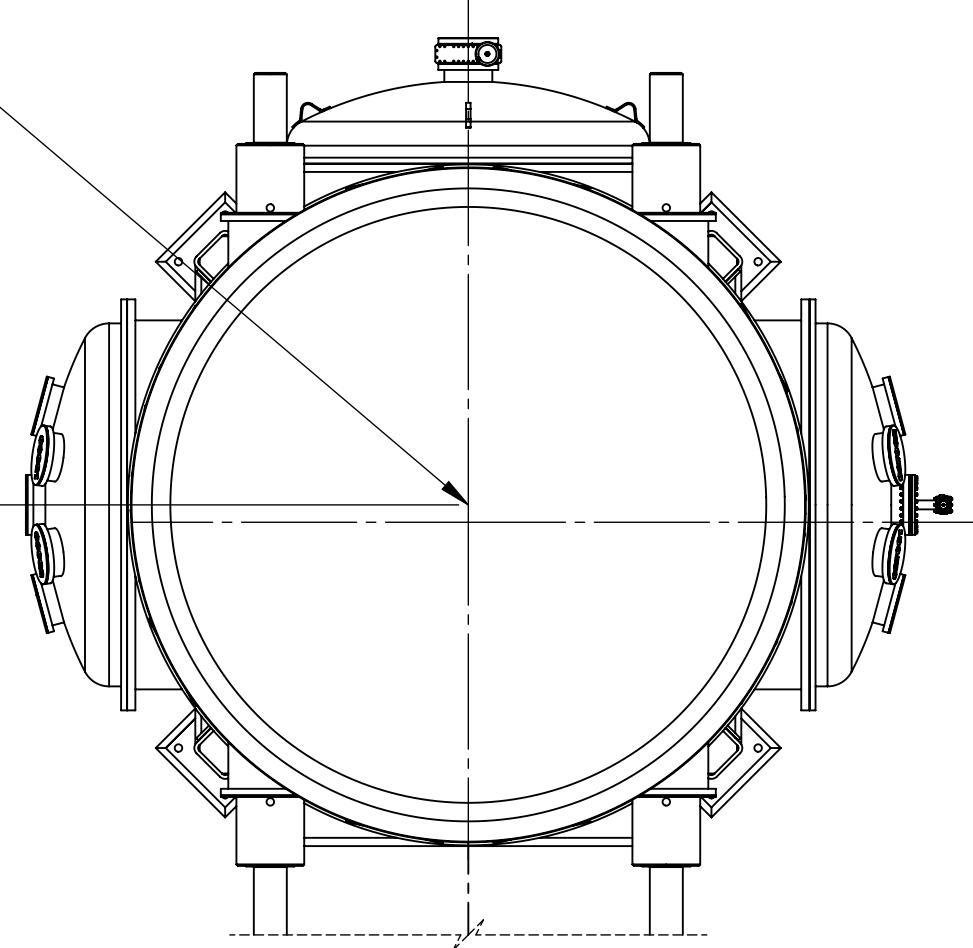
DOCUMENTS REFERENCE	
D1003092-v5	Flange Layout BS Chamber 5 L1 BSC5 ETMY
D1101429-v1	ALIGO SUS, BSC Flooring Orientation Details
D980227-x0	Naming Conventions BSC Ports
D970385-v1	VE Layout, Y-End, LLO (PSI V049-5-009, rev3)

NOTES AND TOLERANCES: (UNLESS OTHERWISE SPECIFIED)	
MATERIAL	N/A
FINISH	N/A μinch

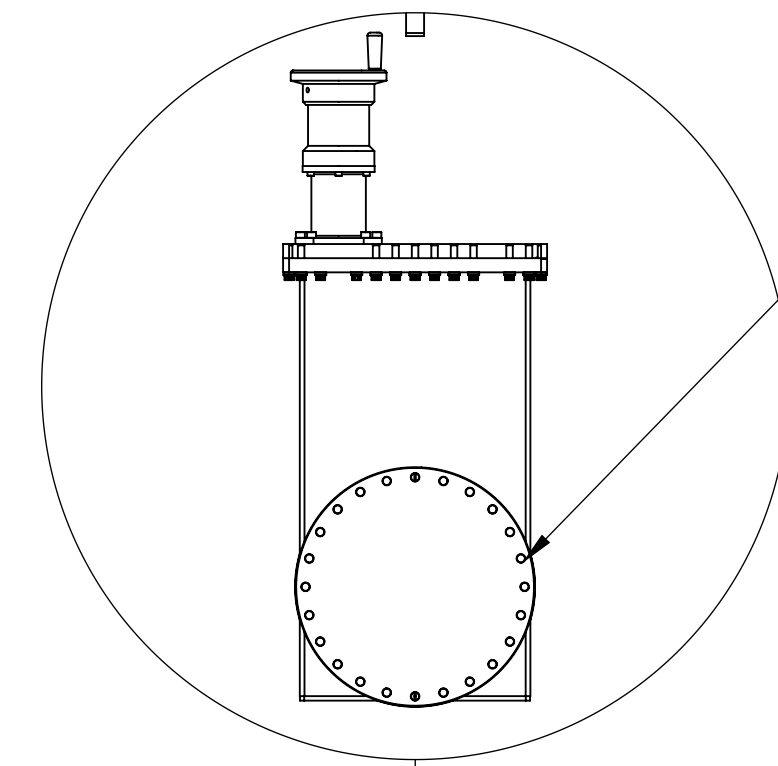
CALIFORNIA INSTITUTE OF TECHNOLOGY MASSACHUSETTS INSTITUTE OF TECHNOLOGY
 SYSTEM: ADVANCED LIGO SUB-SYSTEM: SUS
 PART NAME: AdvLIGO Systems BSC5-L1, Vacuum Equipment Assembly
 DESIGNER: ED CHAVEZ 29 JUN 2011 SIZE DWG. NO. D0900507 REV. v3
 DRAFTER: E.SANCHEZ 27 SEP 2012
 CHECKER: SEE DCC SEE DCC
 APPROVAL: SEE DCC SEE DCC SCALE: 1:32 PROJECTION: SHEET 1 OF 2

D0900507 AdvLIGO VE BSC5-L1, Vacuum Equipment Assembly, PART PDM REV. X027, DRAWING PDM REV. X005

BSC5-L1
GLOBAL COORDINATES
X = 0.0 mm
Y = 4000000.0 mm
Z = 0.0 mm

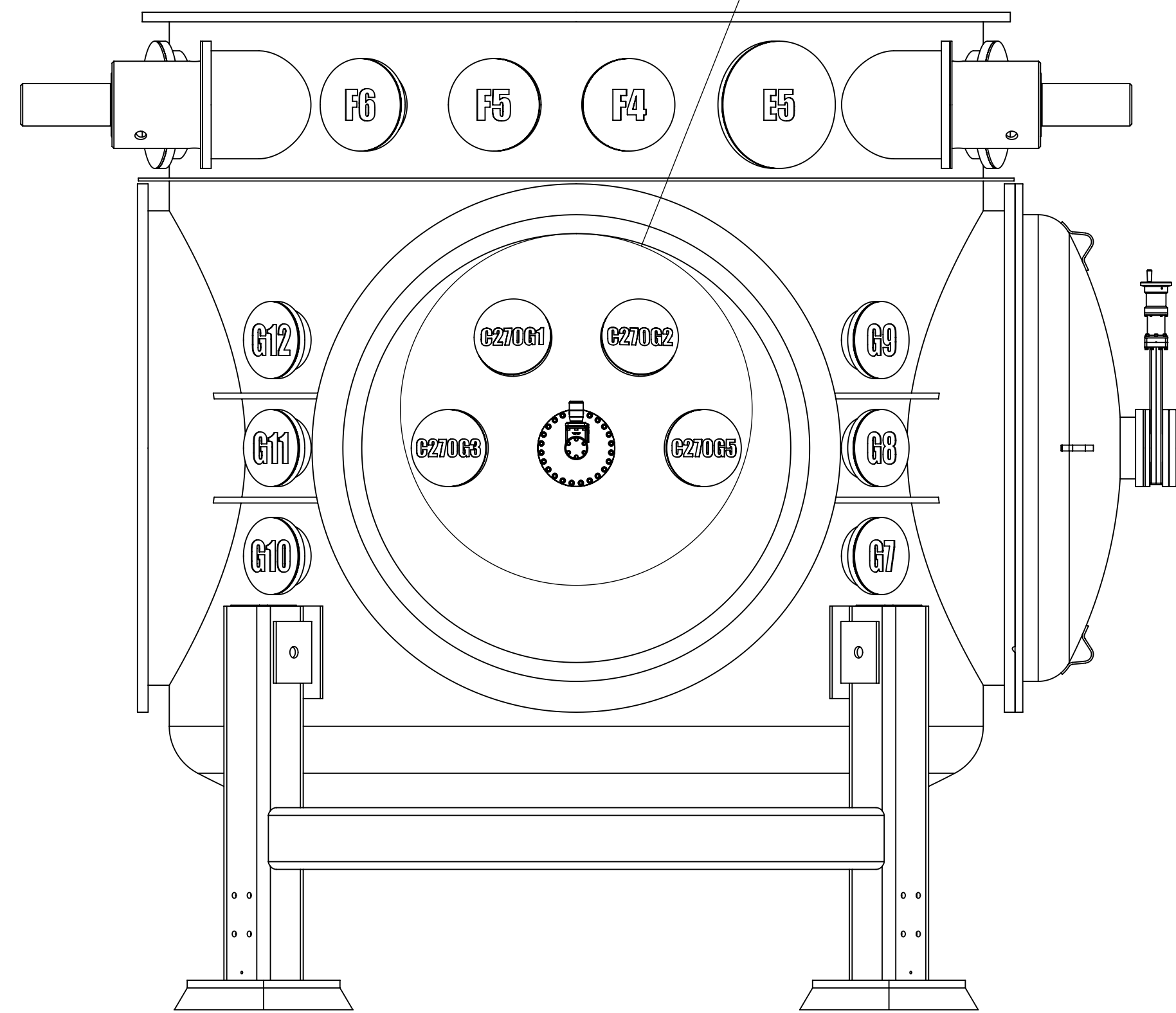


GATE VALVE ASSY.

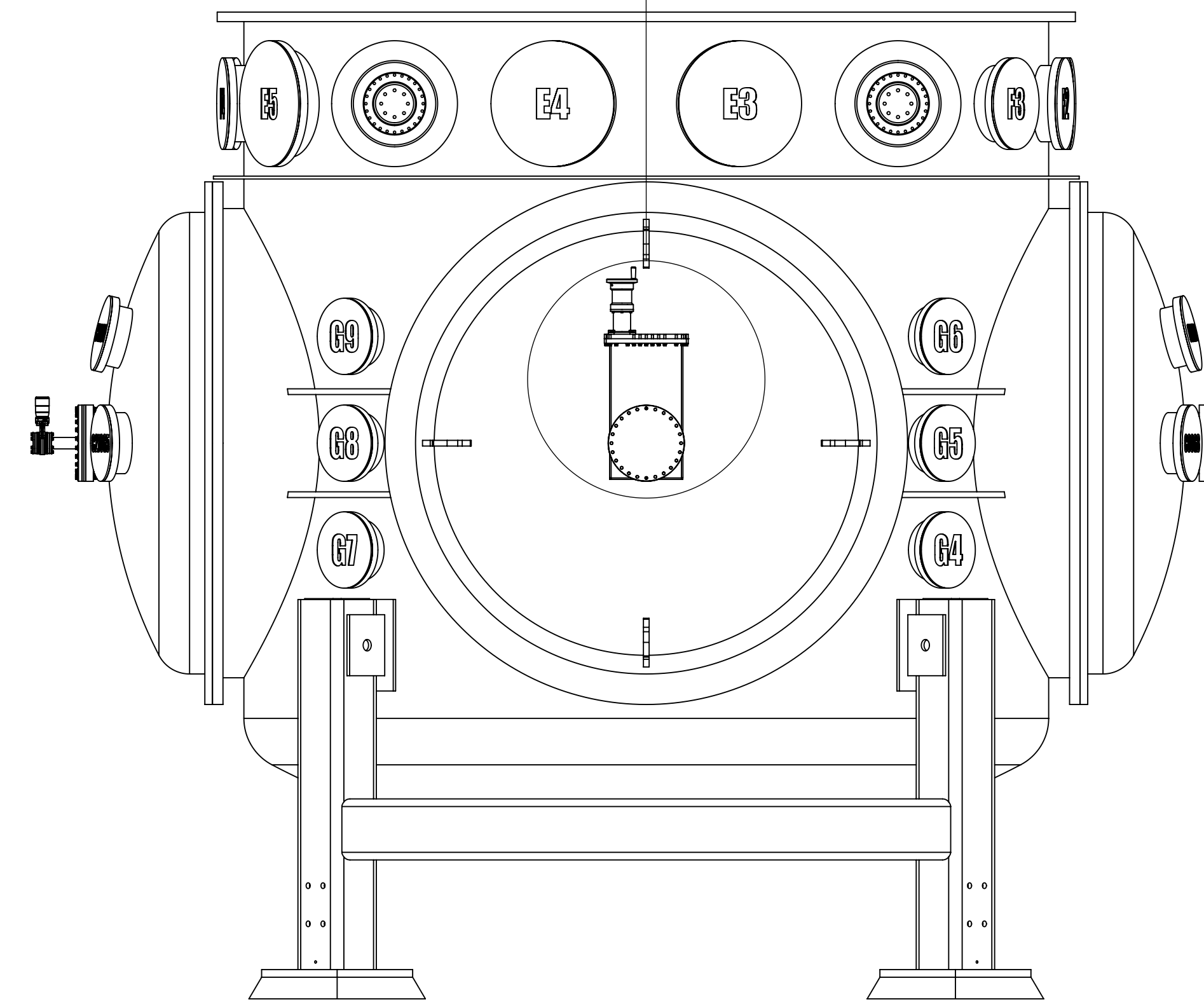


'DG1'

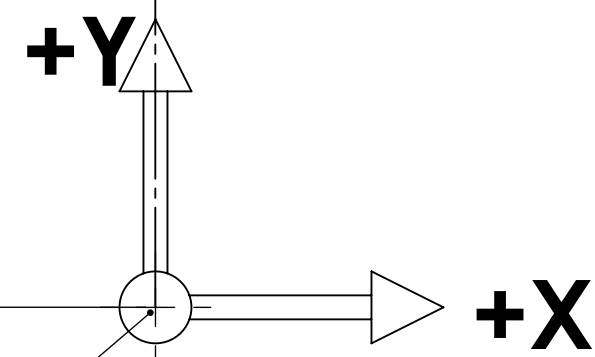
4000000 mm
[11940]



**RIGHT VIEW
ELEVATION 270° SIDE**



**BACK VIEW
ELEVATION 180° SIDE**



AdvLIGO 0,0,0 GLOBAL CS

LIGO CALIFORNIA INSTITUTE OF TECHNOLOGY MASSACHUSETTS INSTITUTE OF TECHNOLOGY	
SIZE DWG. NO.	REV.
D D0900507	v3
SCALE: 1:32	PROJECTION: SHEET 2 OF 2

DD900307 AdvLIGO VE BSC5-L1, Vacuum Equipment Assembly, PART PDM, REV. X.027, DRAWING PDM, REV. X.005