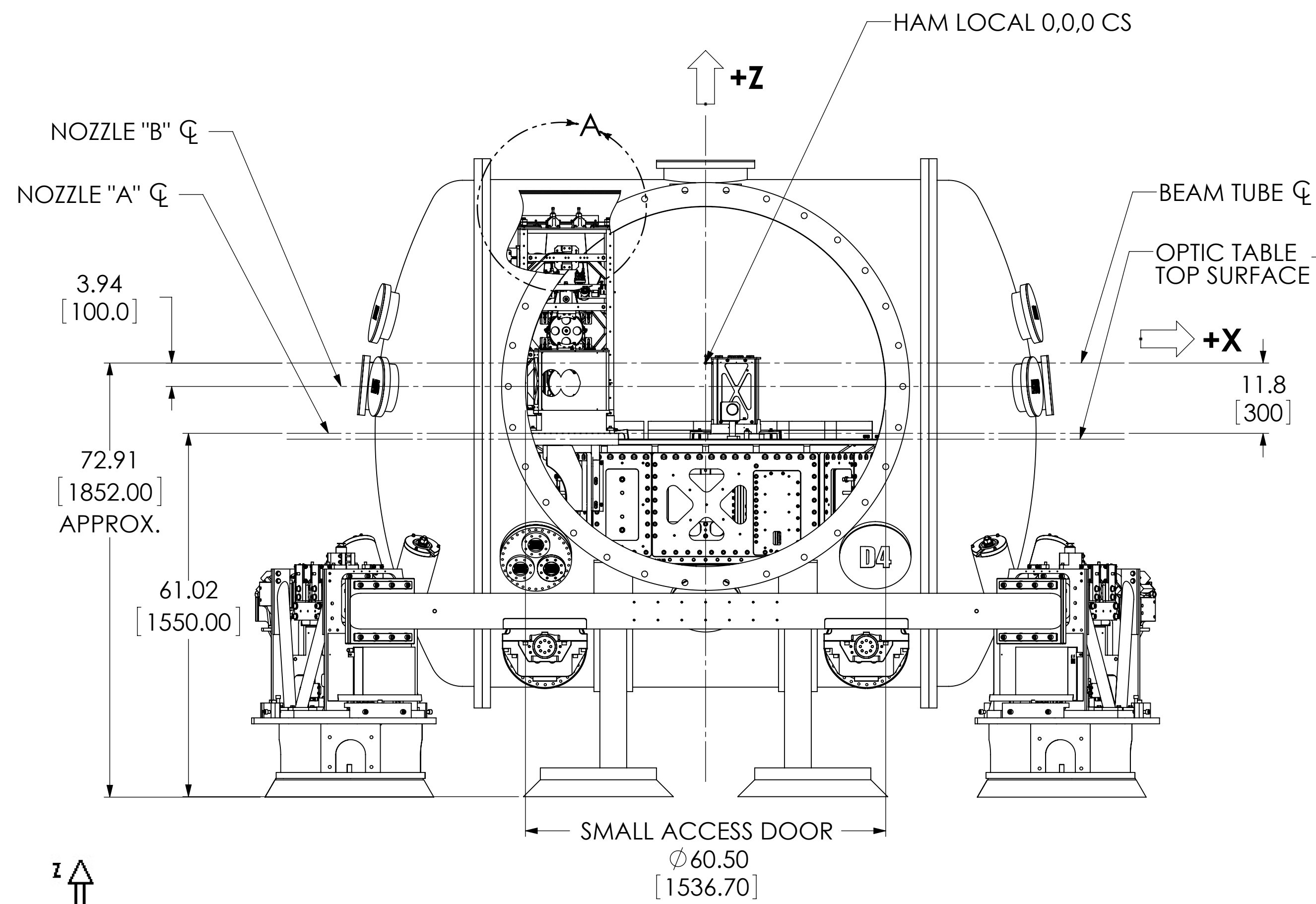
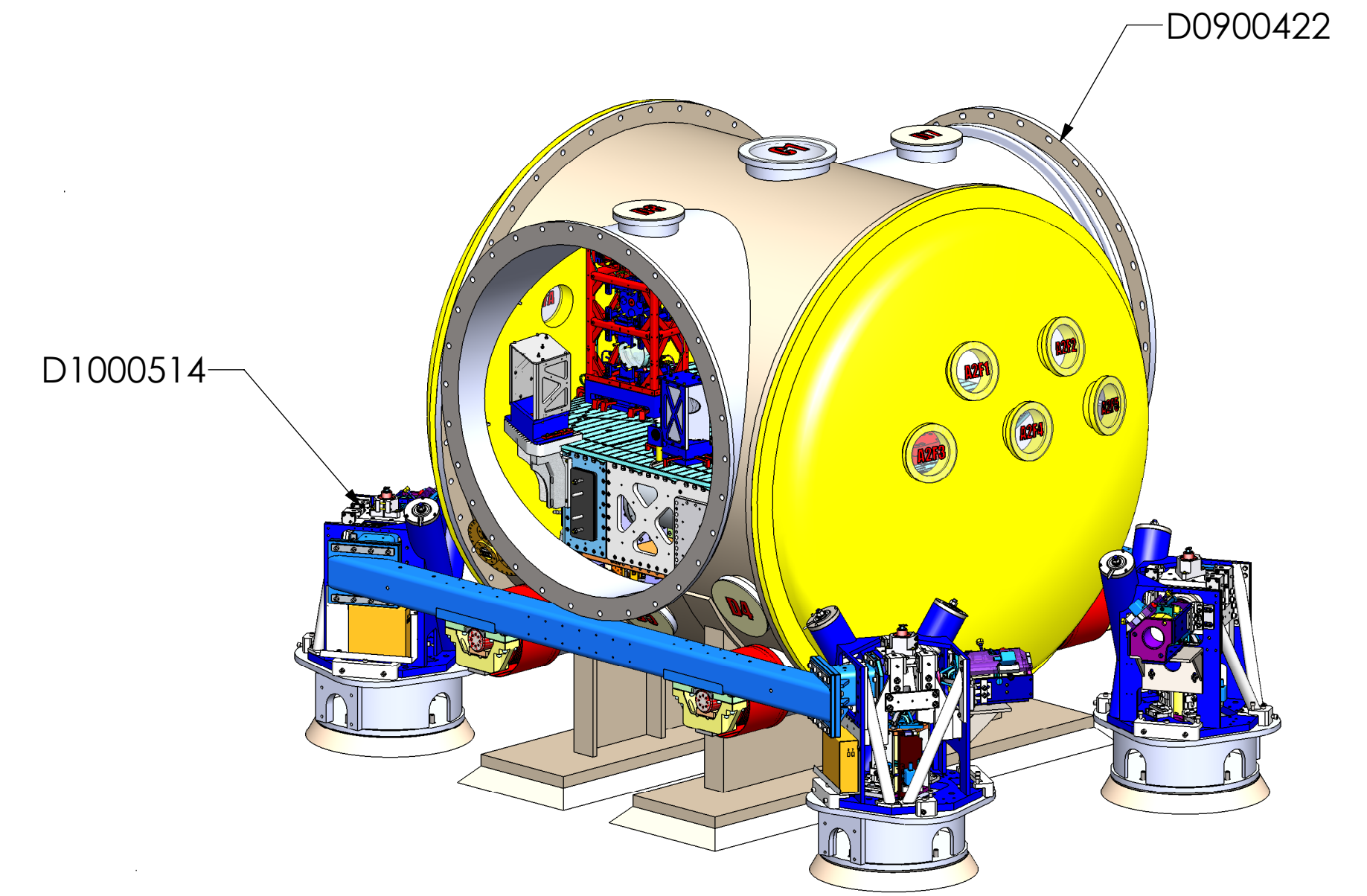
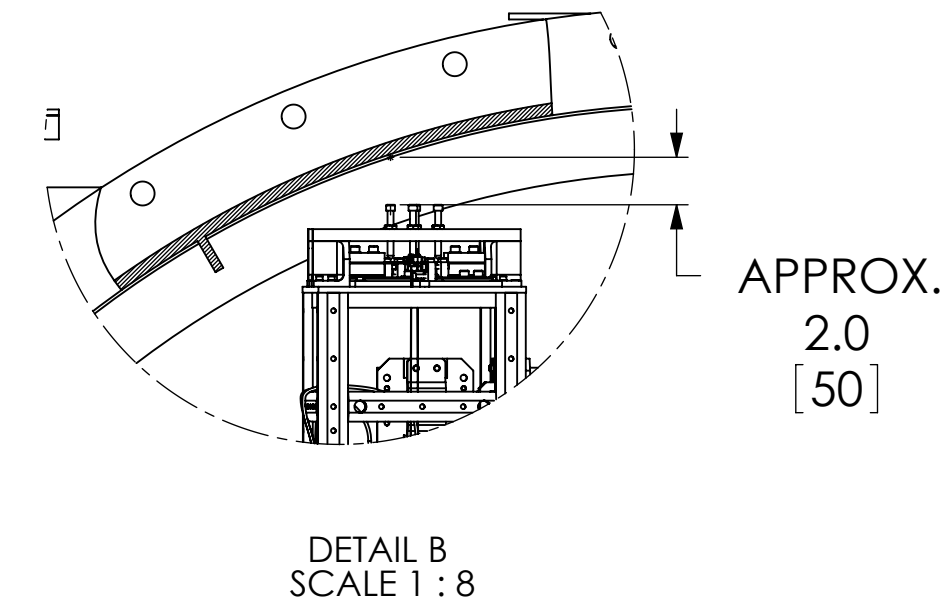
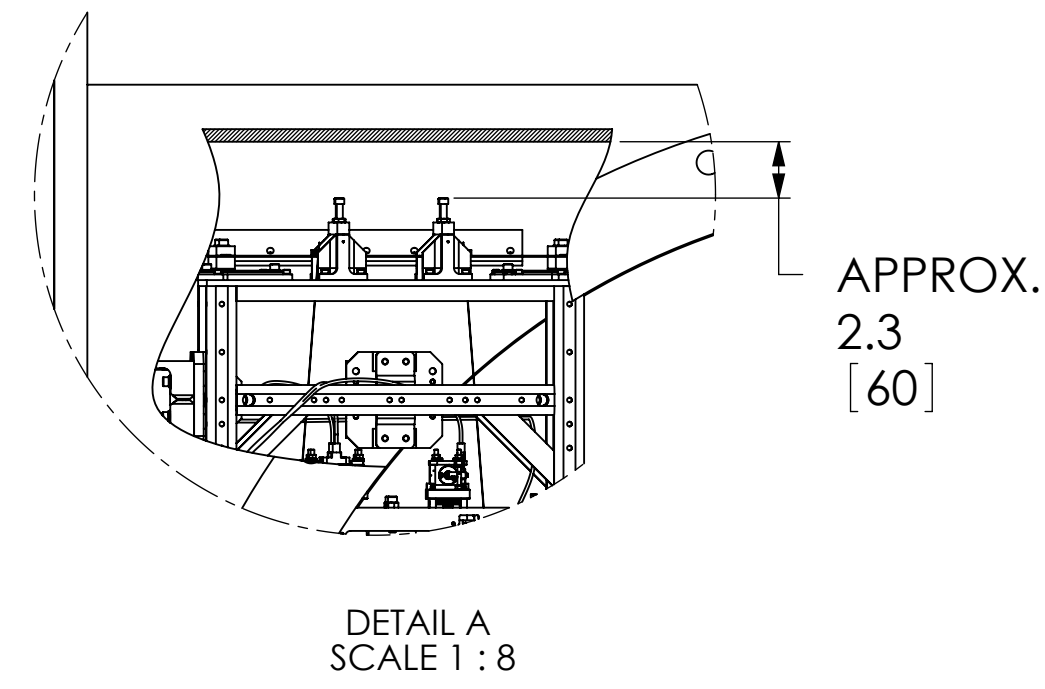
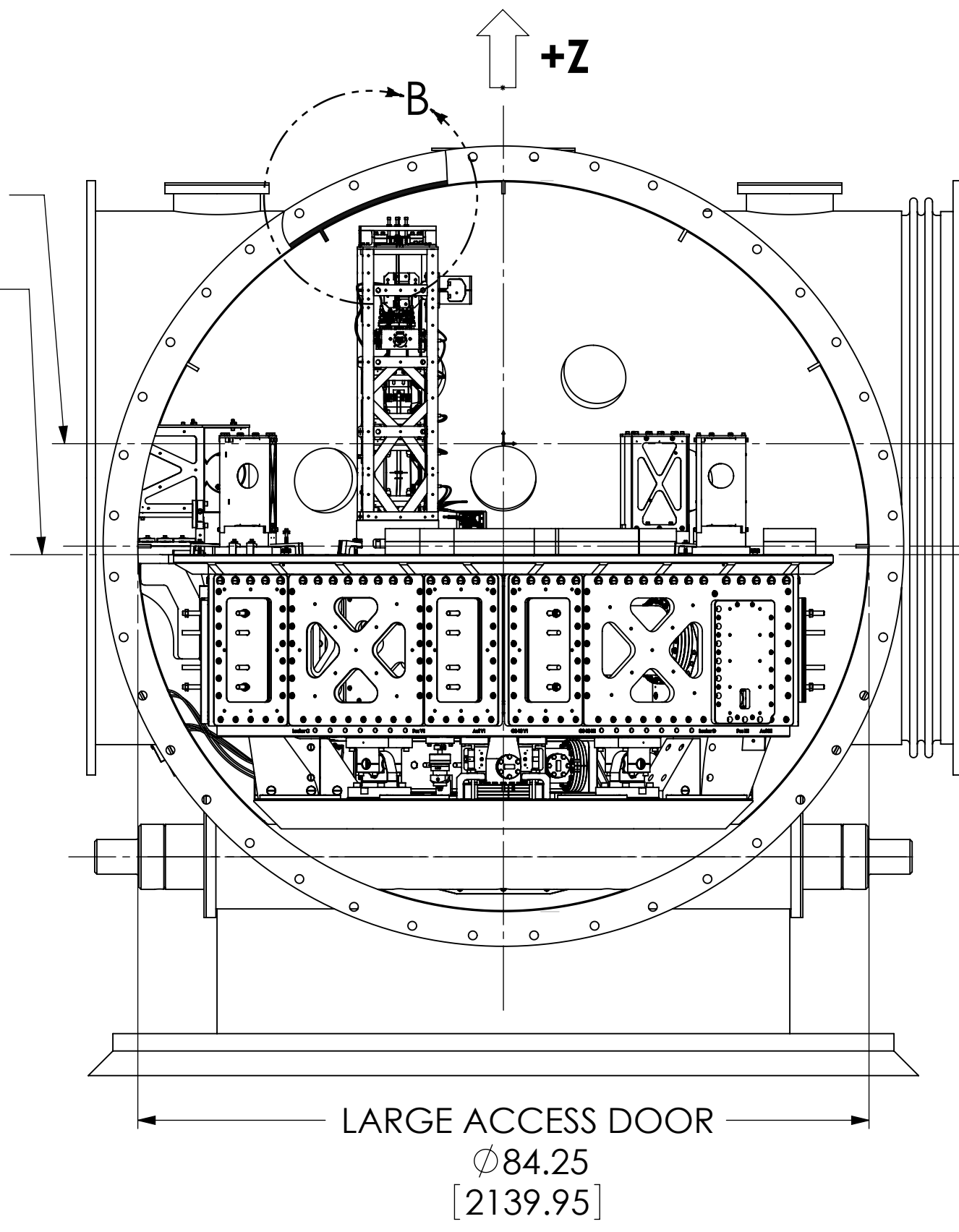


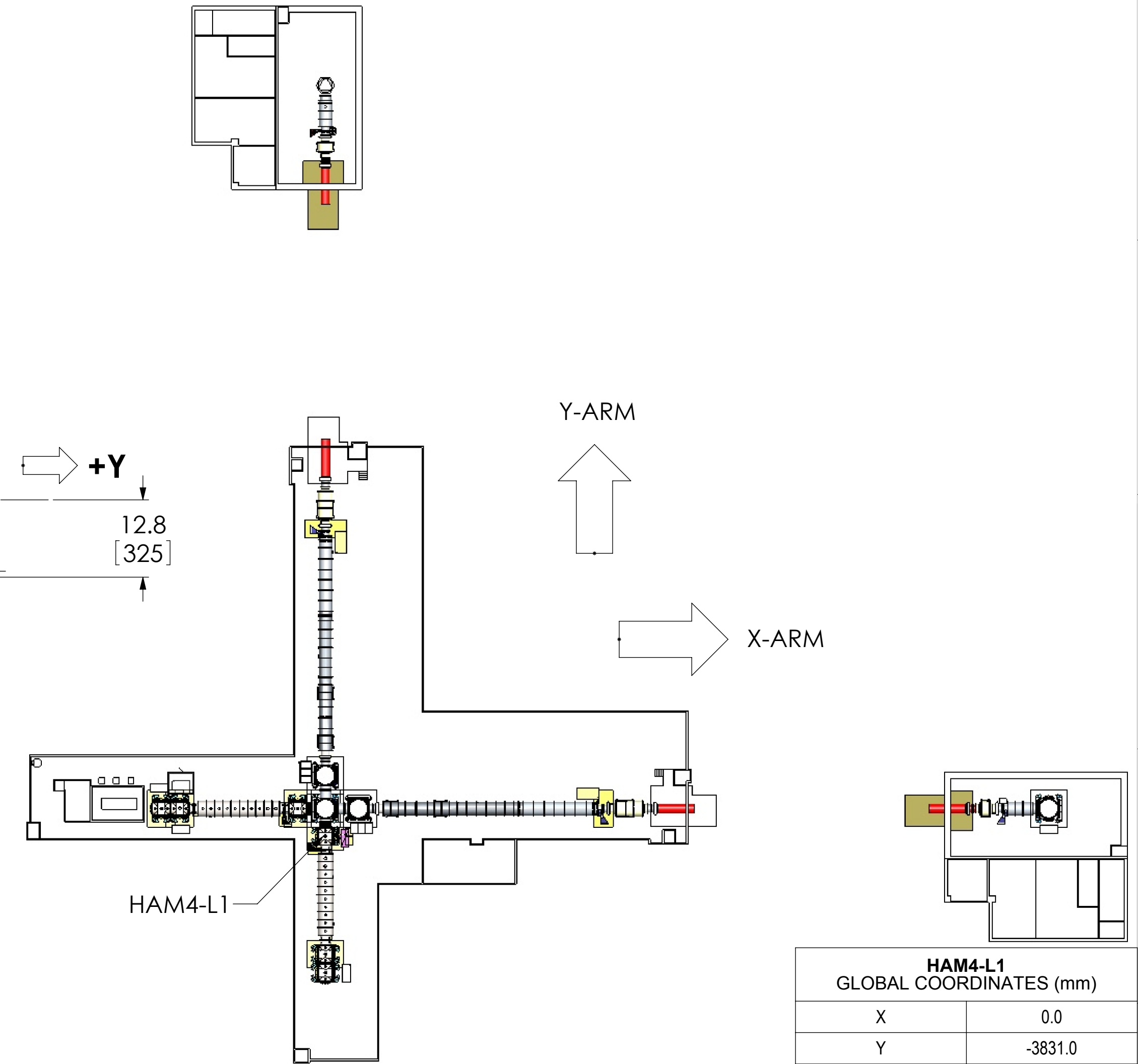
TOP VIEW



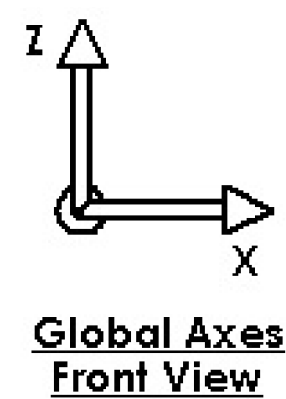
FRONT VIEW



RIGHT VIEW



| HAM4-L1 GLOBAL COORDINATES (mm) | |
|------------------------------------|---------|
| X | 0.0 |
| Y | -3831.0 |
| Z | 0.0 |



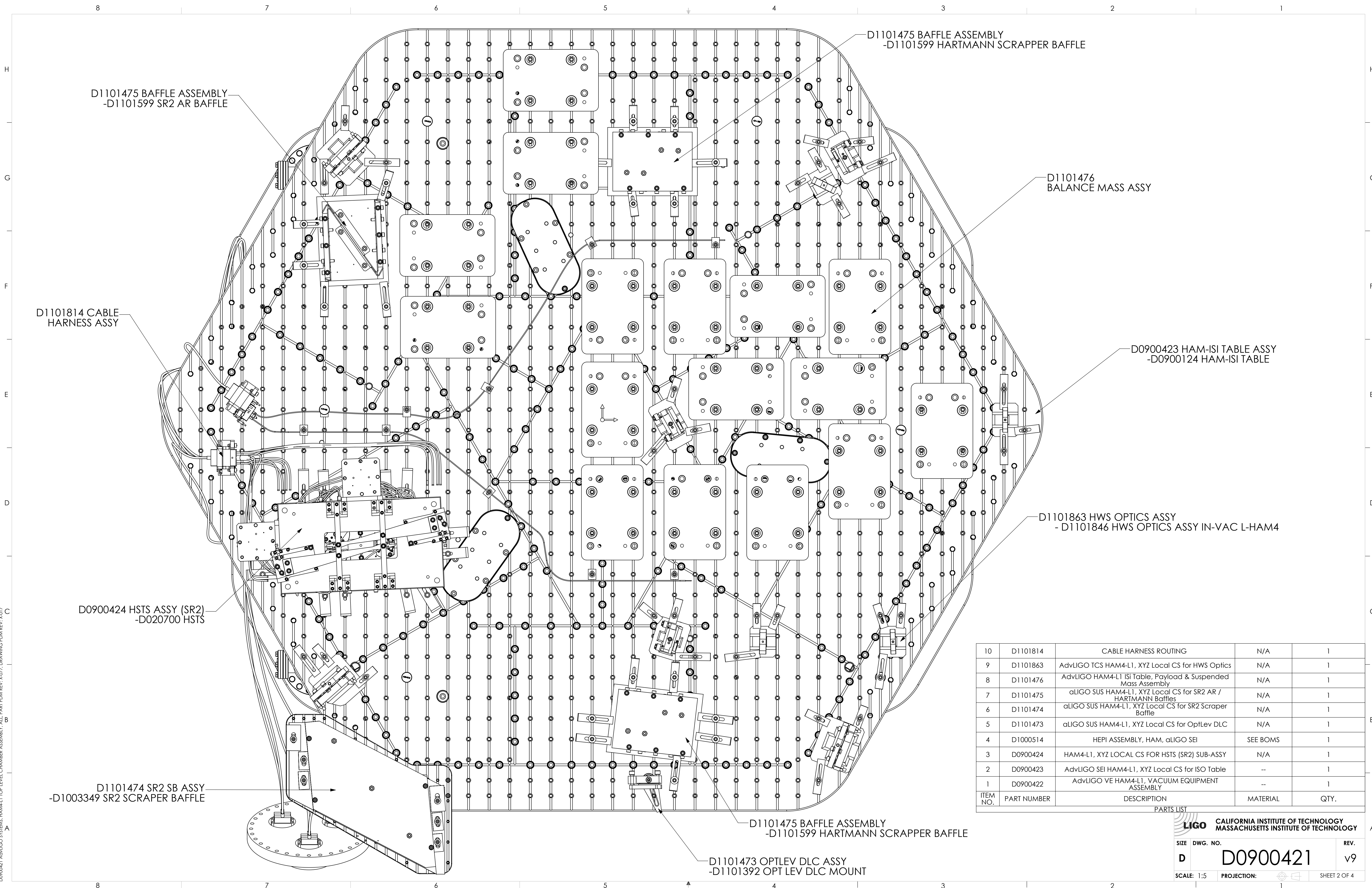
NOTES AND TOLERANCES: (UNLESS OTHERWISE SPECIFIED)

| | | | |
|----------|----|--------|----------|
| MATERIAL | -- | FINISH | -- μinch |
|----------|----|--------|----------|

| | |
|---|---------------|
| LIGO CALIFORNIA INSTITUTE OF TECHNOLOGY MASSACHUSETTS INSTITUTE OF TECHNOLOGY | |
| SYSTEM | ADVANCED LIGO |
| SUB-SYSTEM | SUS |
| NEXT ASSY | |

| | | | |
|---|-----------|-------------|-----------------|
| PART NAME HAM4-L1 TOP LEVEL CHAMBER ASSEMBLY, FULLY DEFINED | | | |
| DESIGNER | ED CHAVEZ | 27 JUL 2009 | SIZE |
| DRAFTER | ED CHAVEZ | 27 JUL 2009 | DWG. NO. |
| CHECKER | C. TORRIE | 15 NOV 2011 | D |
| APPROVAL | SEE DCC | | D0900421 |
| SCALE: 1:16 | | PROJECTION: | SHEET 1 OF 4 |
| | | REV. | v9 |

D0900421 ADV LIGO SYSTEMS: HAM4-L1 TOP LEVEL CHAMBER ASSEMBLY - ALL PART PDM REV. X-077 DRAWING PDM REV. X-017



| ITEM NO. | PART NUMBER | DESCRIPTION | MATERIAL | QTY. |
|----------|-------------|---|----------|------|
| 10 | D1101814 | CABLE HARNESS ROUTING | N/A | 1 |
| 9 | D1101863 | AdvLIGO TCS HAM4-L1, XYZ Local CS for HWS Optics | N/A | 1 |
| 8 | D1101476 | AdvLIGO HAM4-L1 Isi Table, Payload & Suspended Mass Assembly | N/A | 1 |
| 7 | D1101475 | aLIGO SUS HAM4-L1, XYZ Local CS for SR2 AR / HARTMANN Baffles | N/A | 1 |
| 6 | D1101474 | aLIGO SUS HAM4-L1, XYZ Local CS for SR2 Scraper Baffle | N/A | 1 |
| 5 | D1101473 | aLIGO SUS HAM4-L1, XYZ Local CS for OptLev DLC | N/A | 1 |
| 4 | D1000514 | HEPI ASSEMBLY, HAM, aLIGO SEI | SEE BOMS | 1 |
| 3 | D0900424 | HAM4-L1, XYZ LOCAL CS FOR HSTS (SR2) SUB-ASSY | N/A | 1 |
| 2 | D0900423 | AdvLIGO SEI HAM4-L1, XYZ Local CS for ISO Table | -- | 1 |
| 1 | D0900422 | AdvLIGO VE HAM4-L1, VACUUM EQUIPMENT ASSEMBLY | -- | 1 |

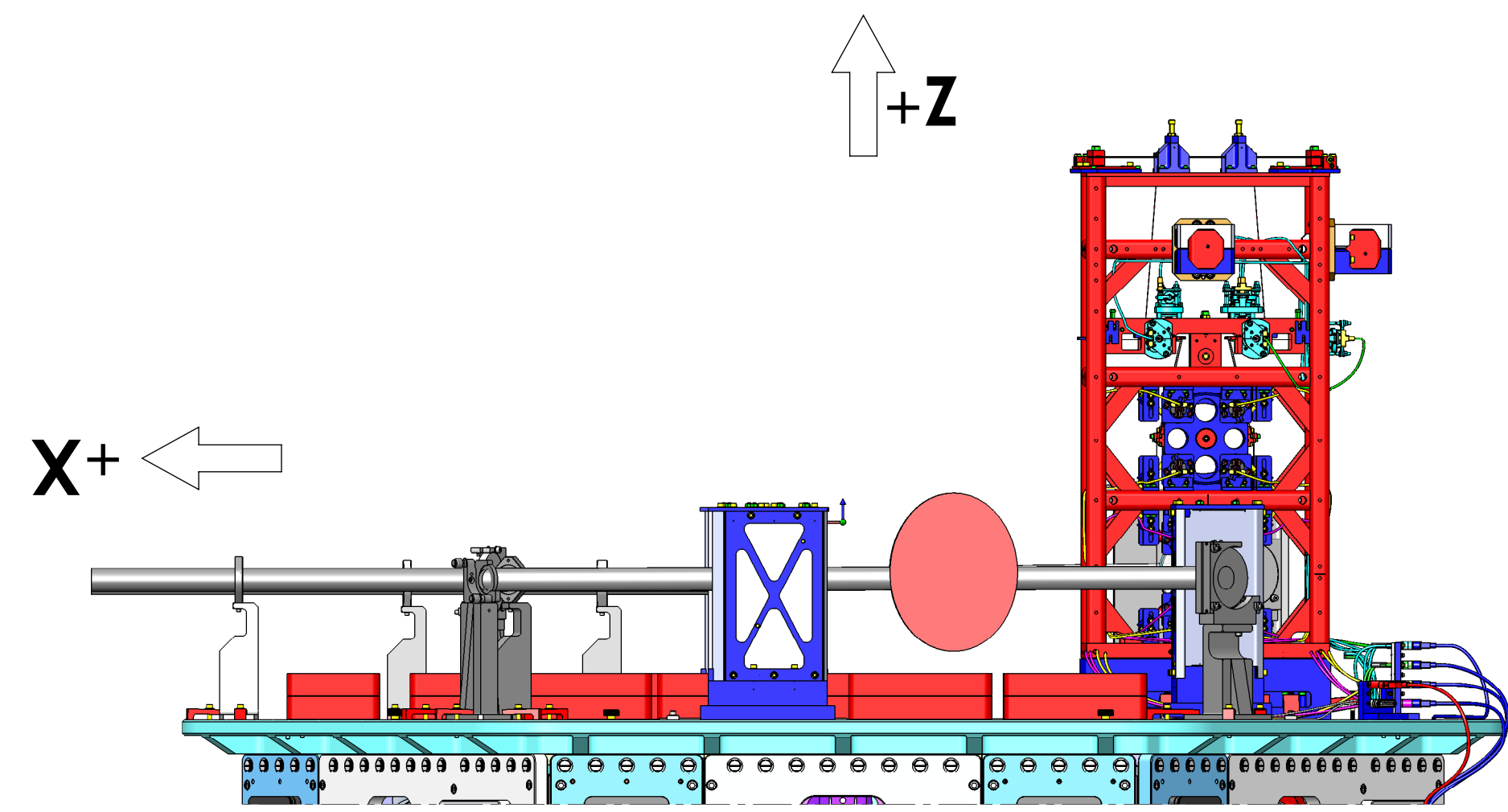
PARTS LIST

LIGO CALIFORNIA INSTITUTE OF TECHNOLOGY
MASSACHUSETTS INSTITUTE OF TECHNOLOGY

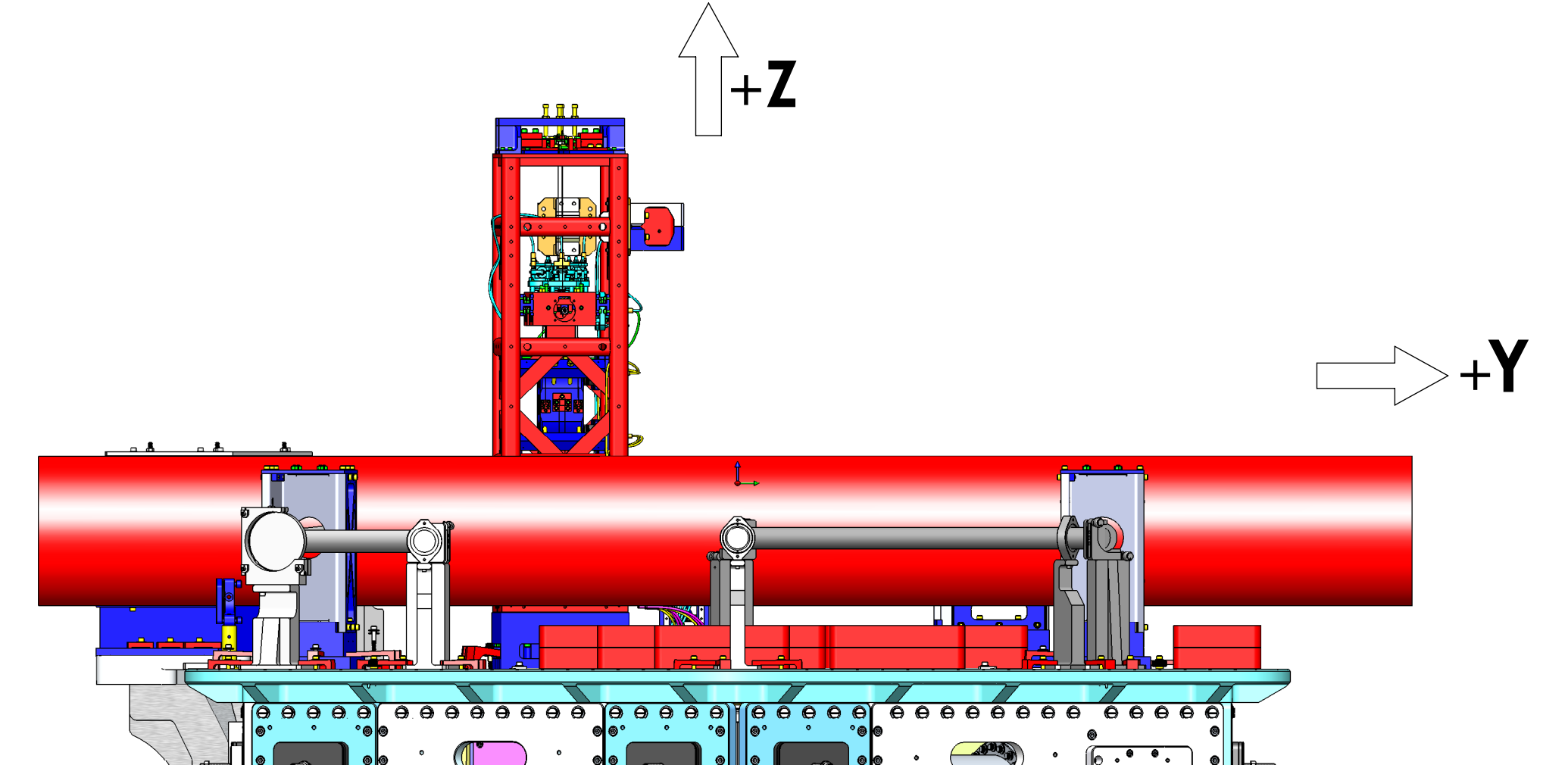
SIZE DWG. NO. **D** **D0900421** REV. **v9**

SCALE: 1:5 PROJECTION: SHEET 2 OF 4

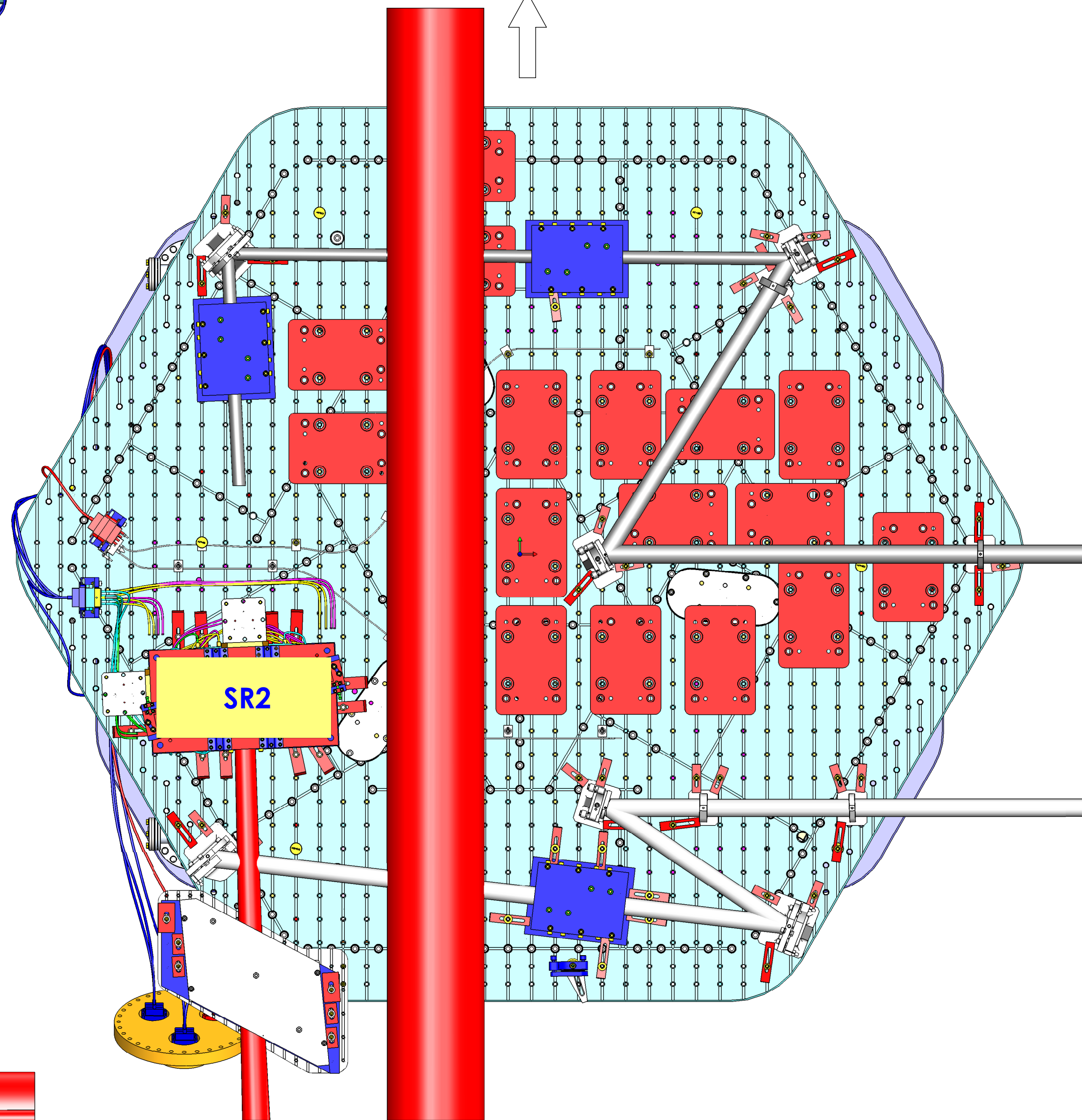
D0900421 ADVLIGO SYSTEMS: HAM4-L1 TOP LEVEL CHAMBER ASSEMBLY: ALL PART PDM REV: X-077: DRAWING PDM REV: X-017



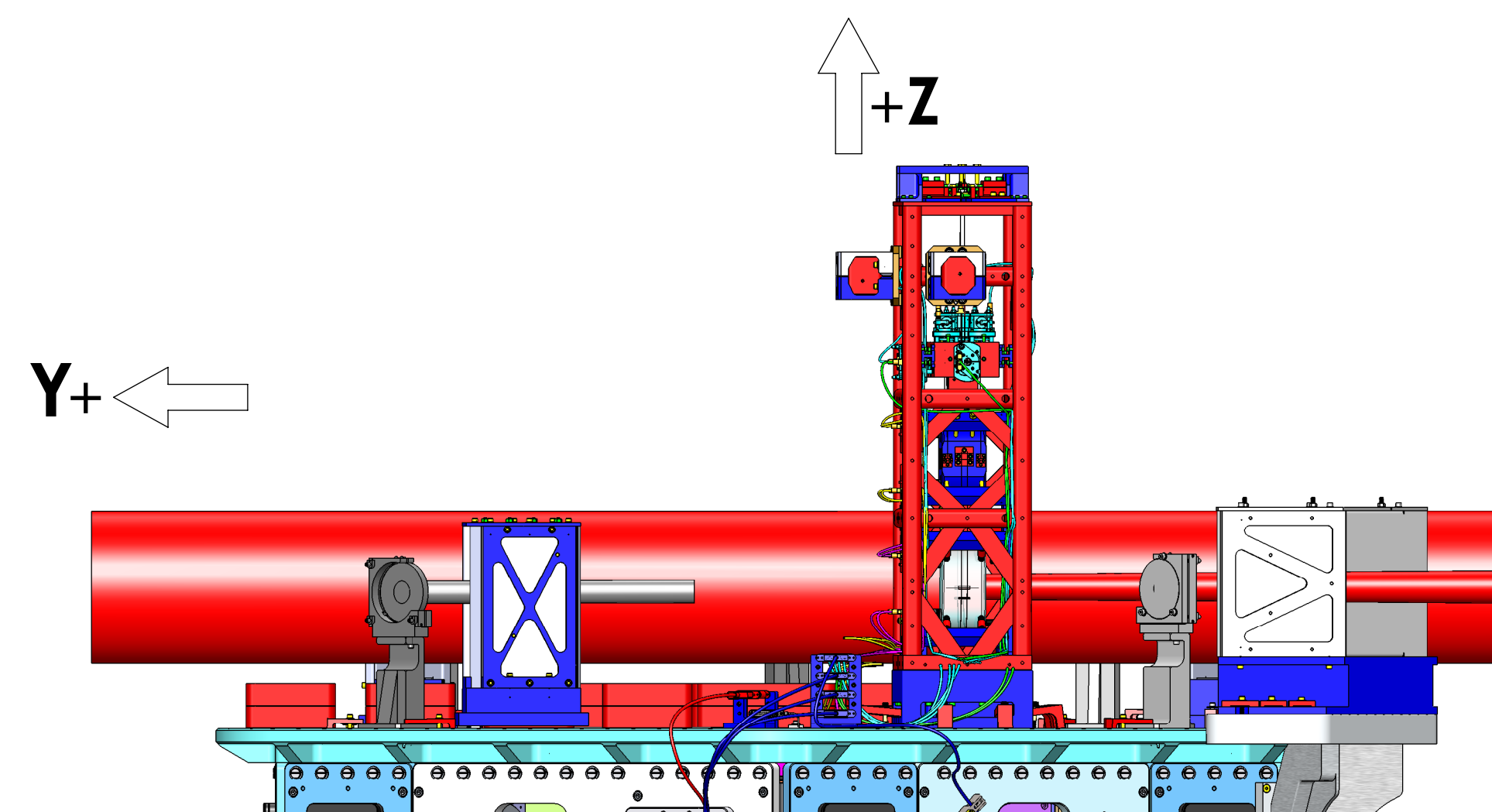
REAR VIEW
(ROTATED 180 DEGREES CCW)



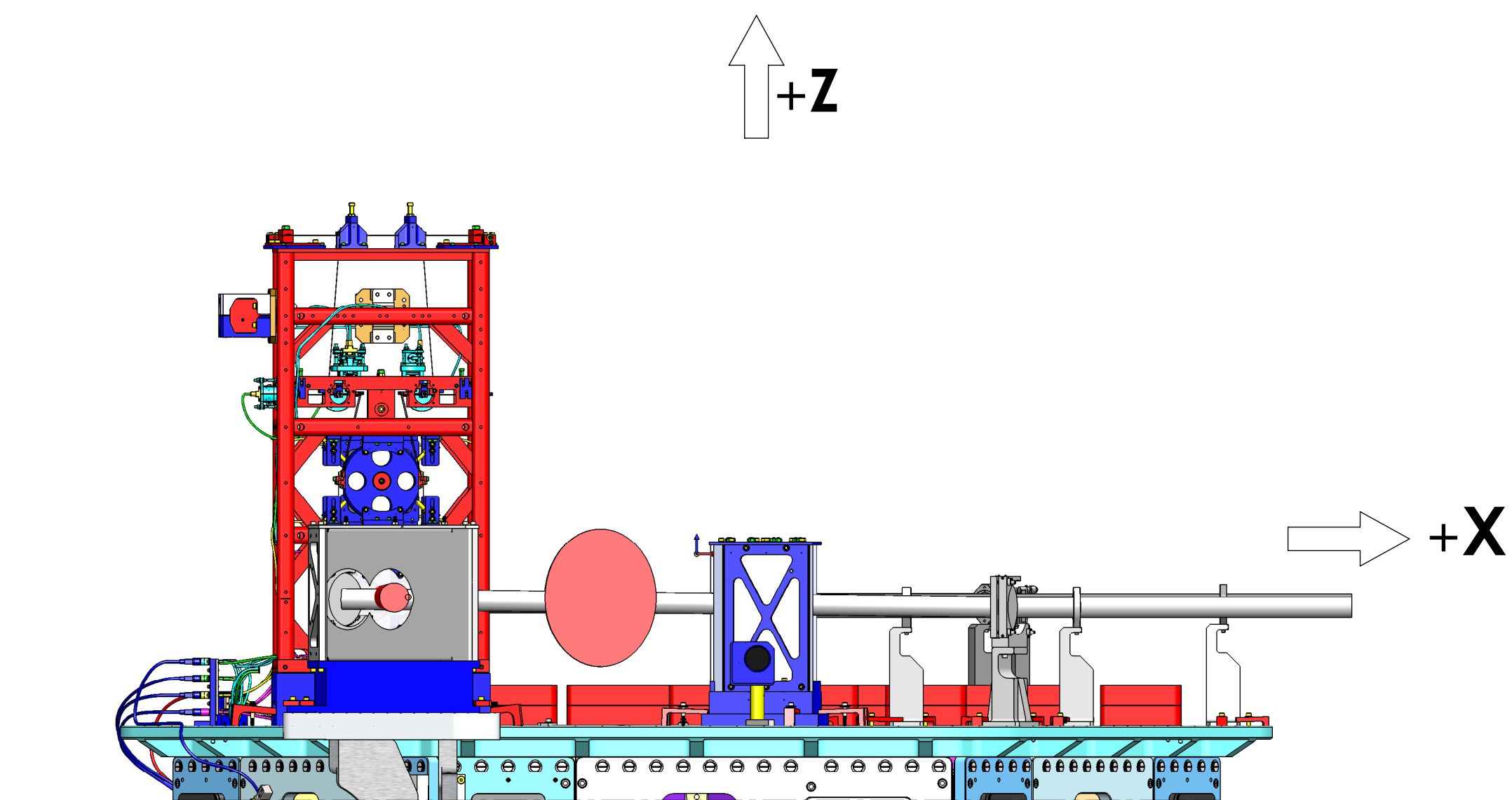
RIGHT SIDE VIEW
(ROTATED 90 DEGREES CW)



TOP VIEW



LEFT SIDE VIEW
(ROTATED 90 DEGREES CCW)

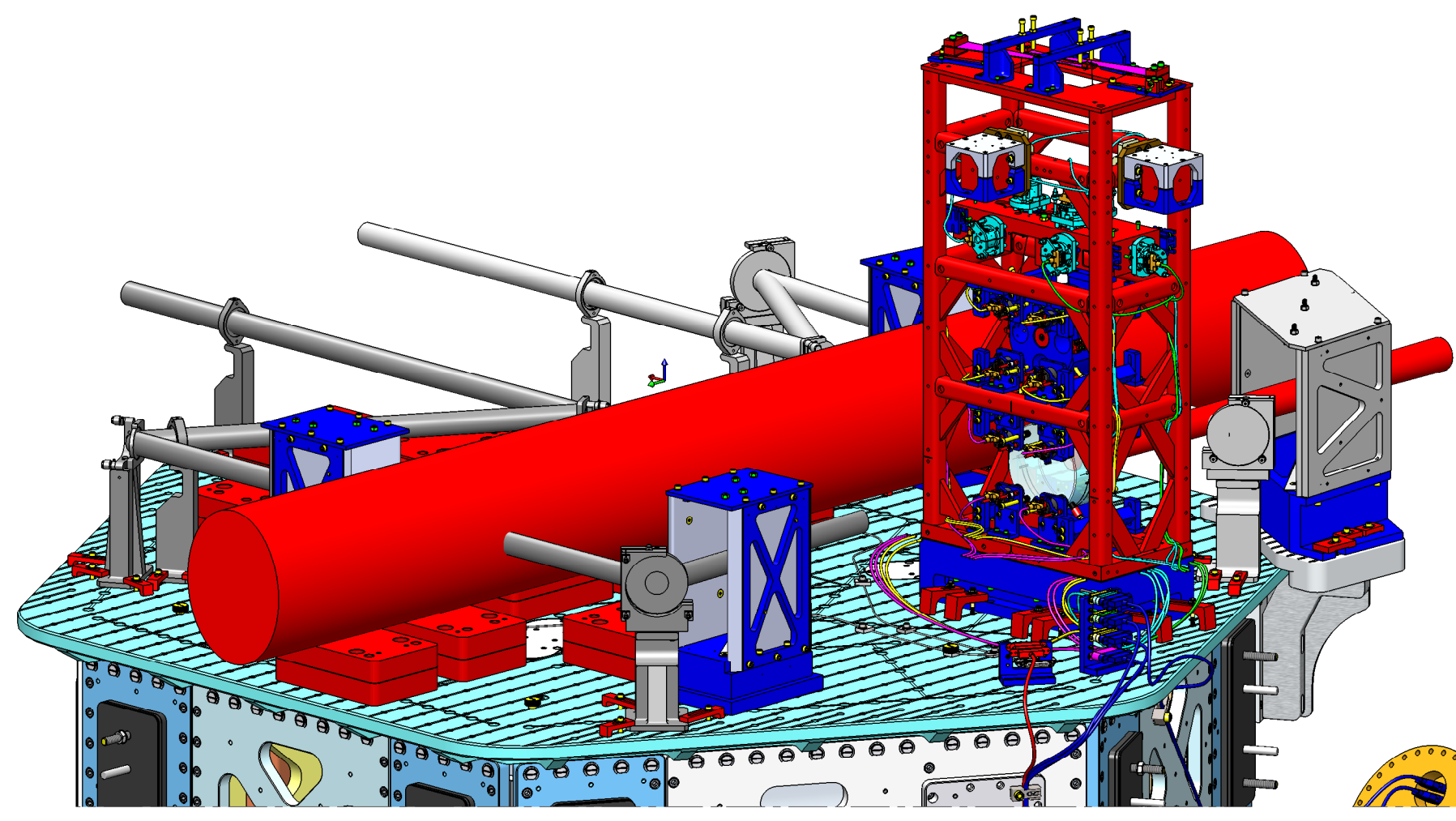


FRONT VIEW

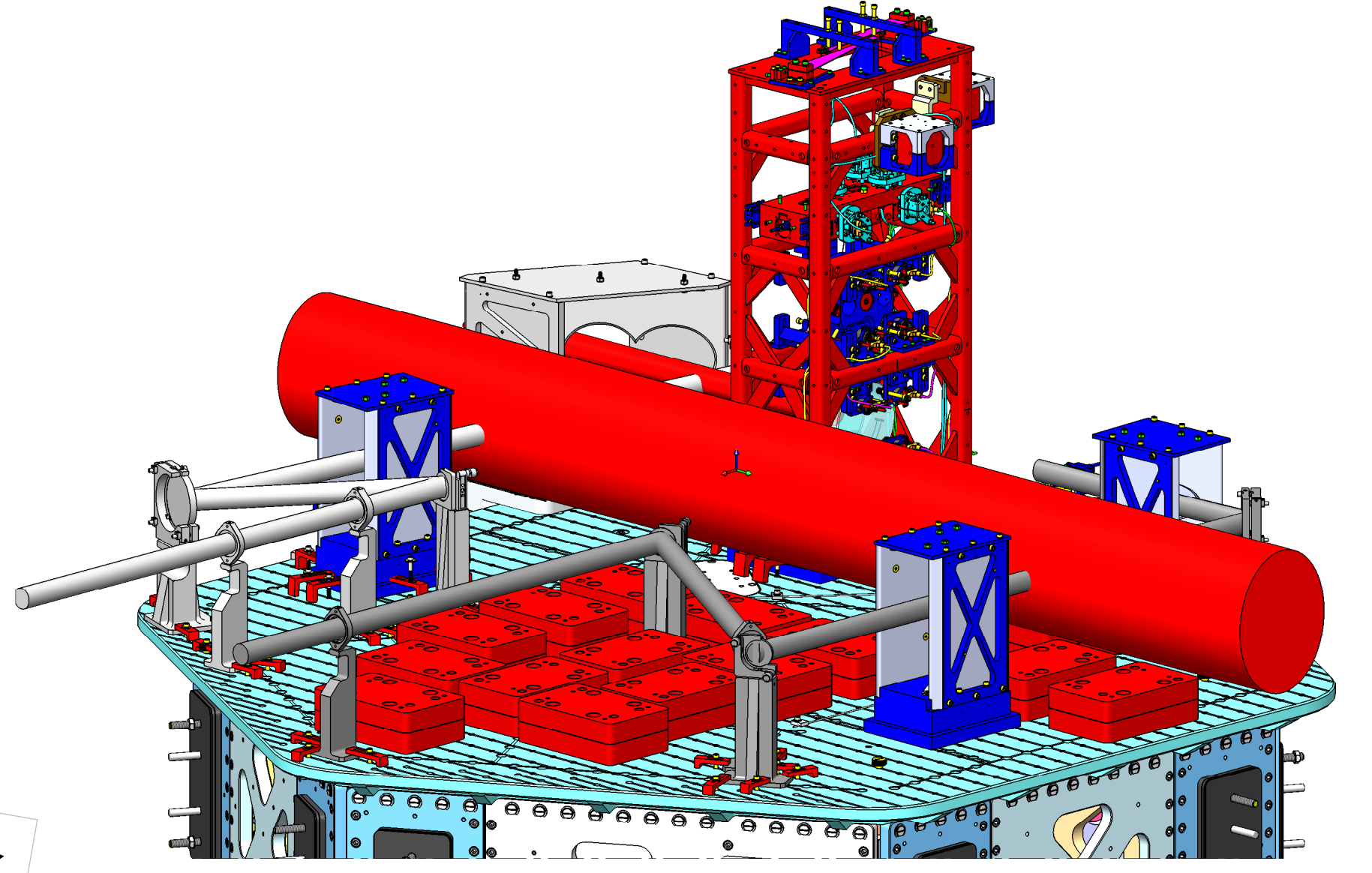
LASER BEAMS - ORTHO VIEWS

| | |
|---|-------------|
| CALIFORNIA INSTITUTE OF TECHNOLOGY MASSACHUSETTS INSTITUTE OF TECHNOLOGY | |
| SIZE DWG. NO. | REV. |
| D D0900421 | v9 |
| SCALE: 1:24 | PROJECTION: |
| SHEET 3 OF 4 | |

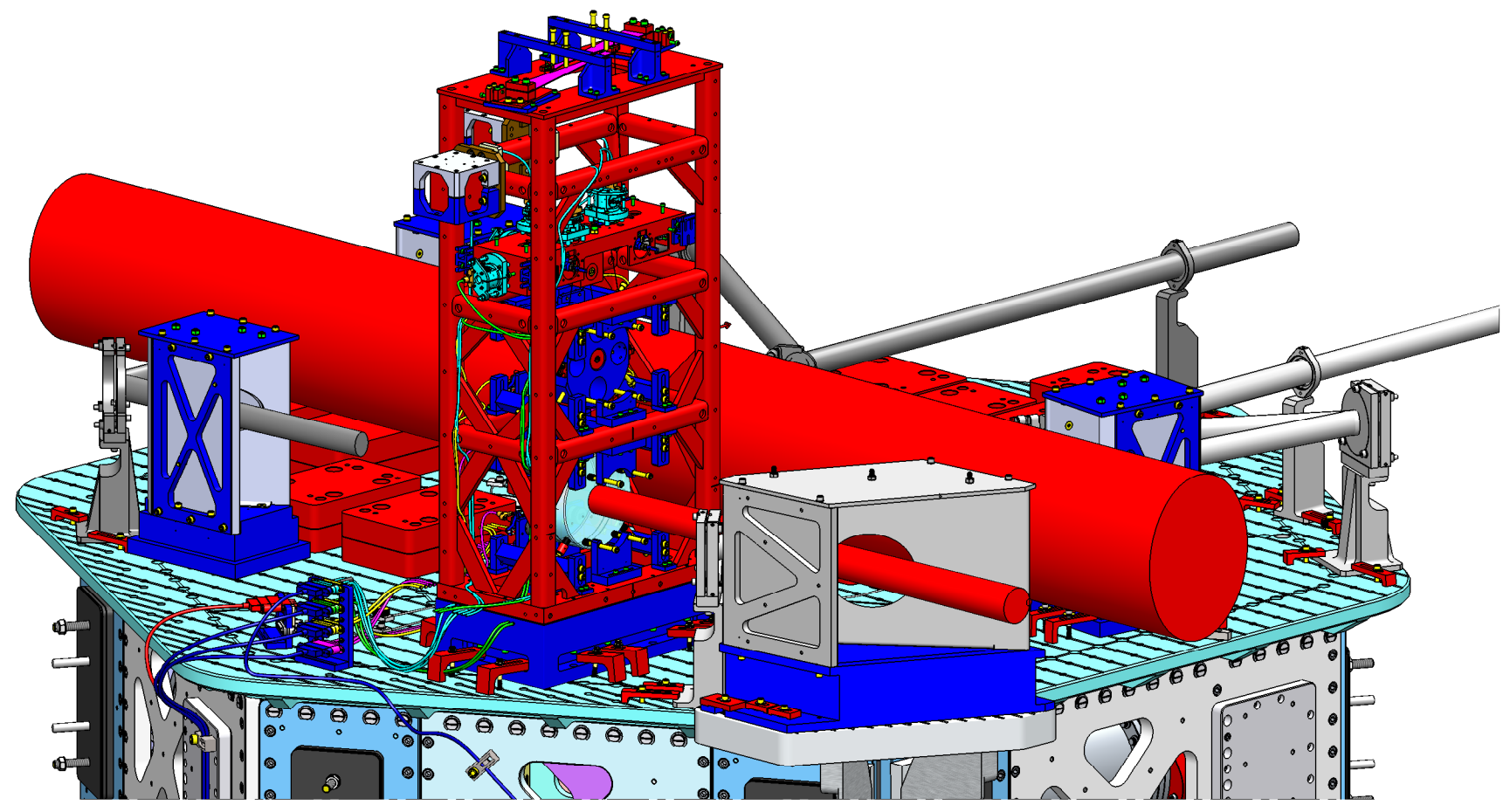
D0900421 ASU/LIGO SYSTEMS: HAMM-L1 TOP LEVEL CHAMBER ASSEMBLY - ALL PART PDM REV: X-077 DRAWING PDM REV: X-017



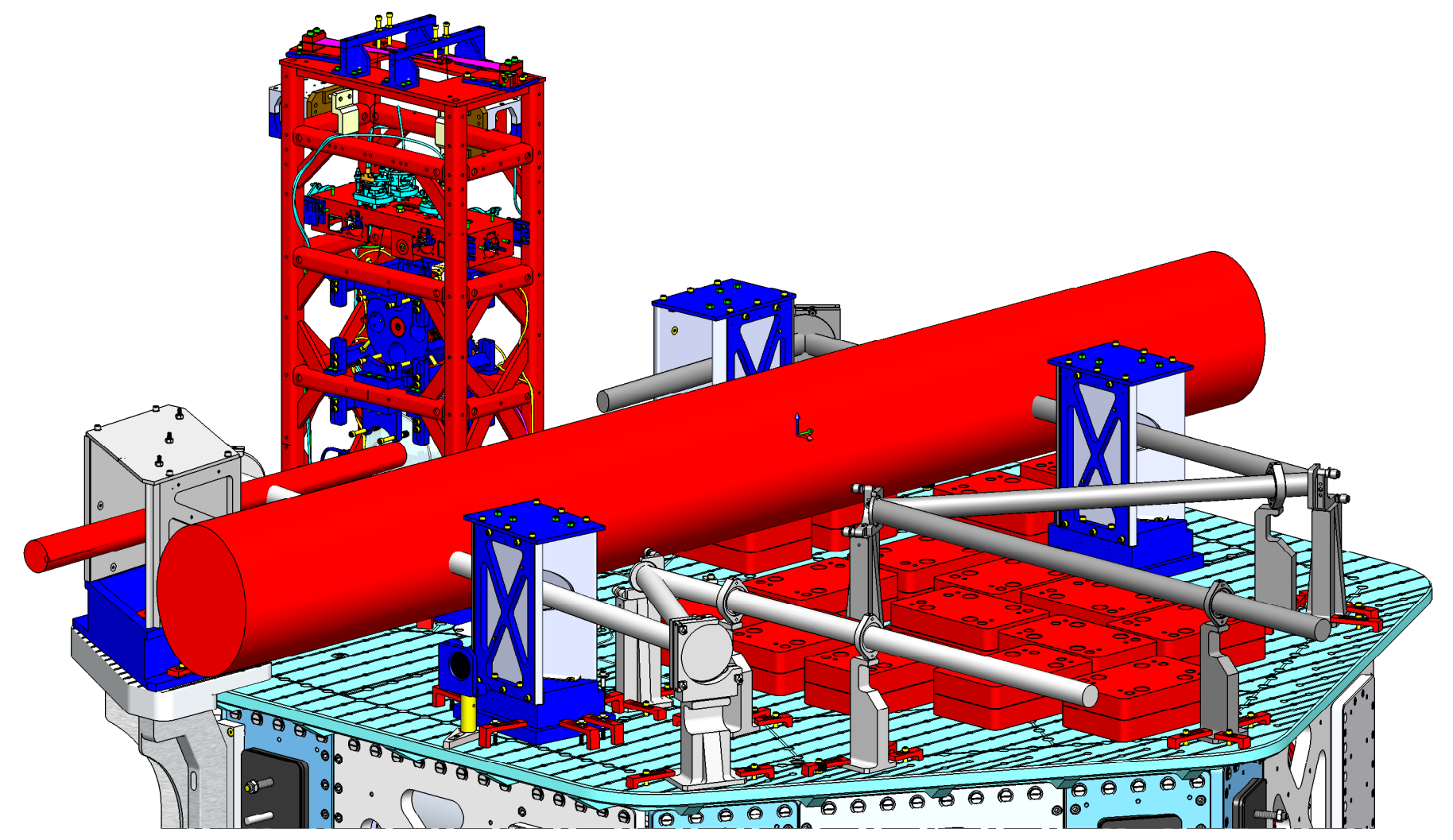
ISO REAR - LEFT



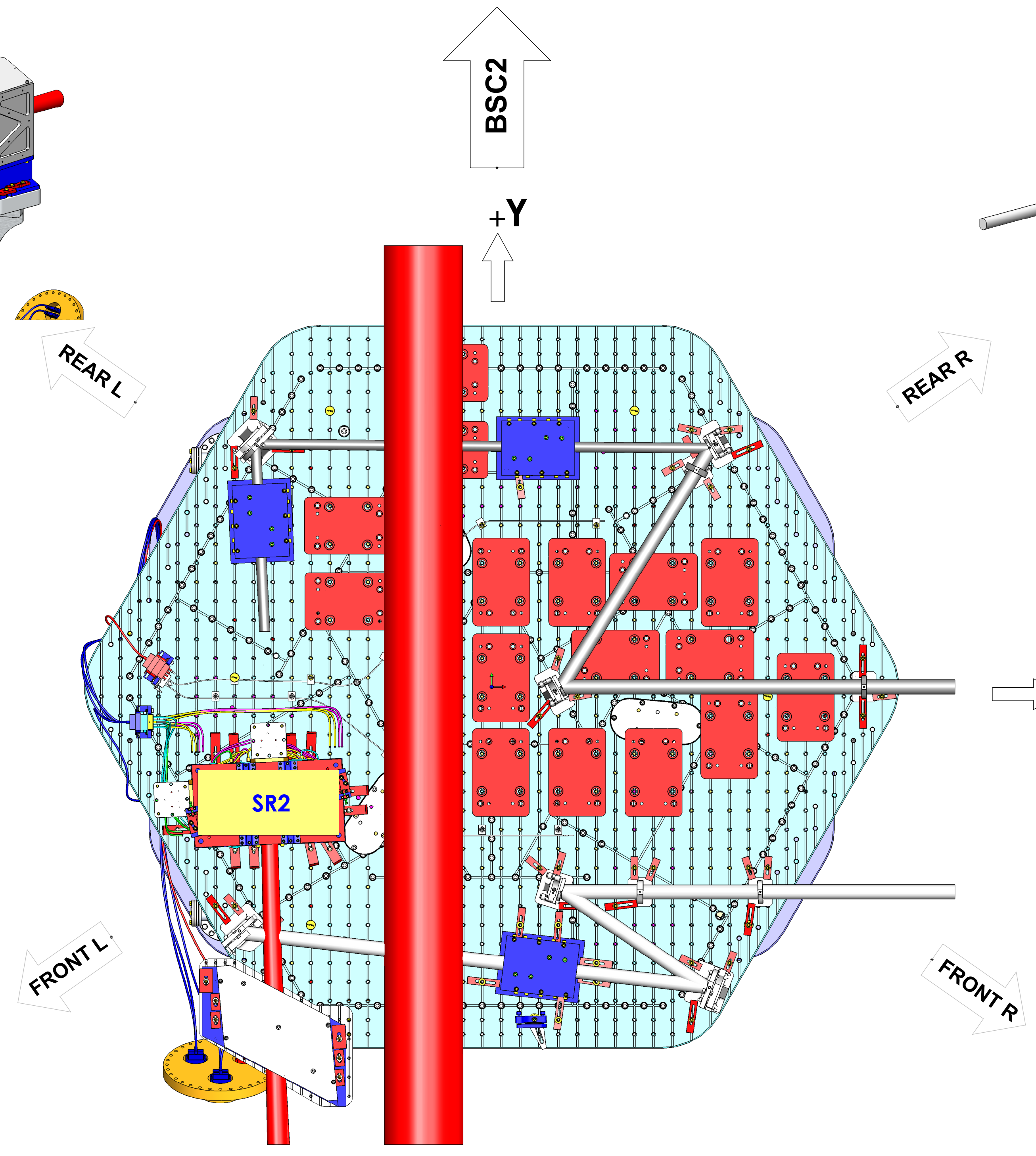
ISO REAR - RIGHT



ISO FRONT - LEFT



ISO FRONT - RIGHT



TOP VIEW

LASER BEAMS - ISO VIEWS

| | | |
|---|-------------|--------------|
| LIGO CALIFORNIA INSTITUTE OF TECHNOLOGY MASSACHUSETTS INSTITUTE OF TECHNOLOGY | | REV. |
| SIZE DWG. NO. | D0900421 | v9 |
| SCALE: 1:24 | PROJECTION: | SHEET 4 OF 4 |

D0900421 ASD/LIGO SYSTEMS - HAMM-L1 TOP LEVEL CHAMBER ASSEMBLY - ALL PART PDM REV. X-077 DRAWING PDM REV. X-017