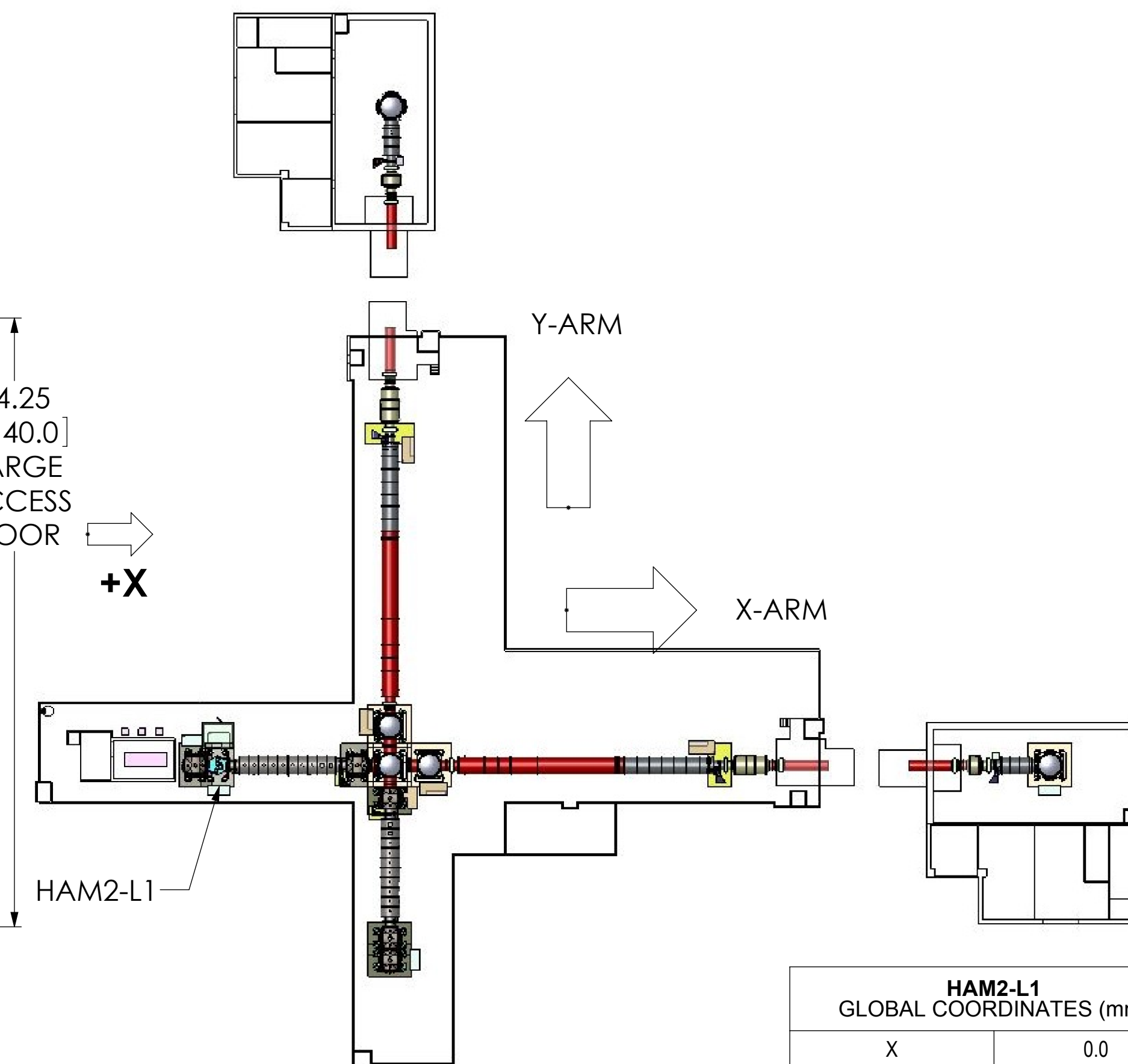
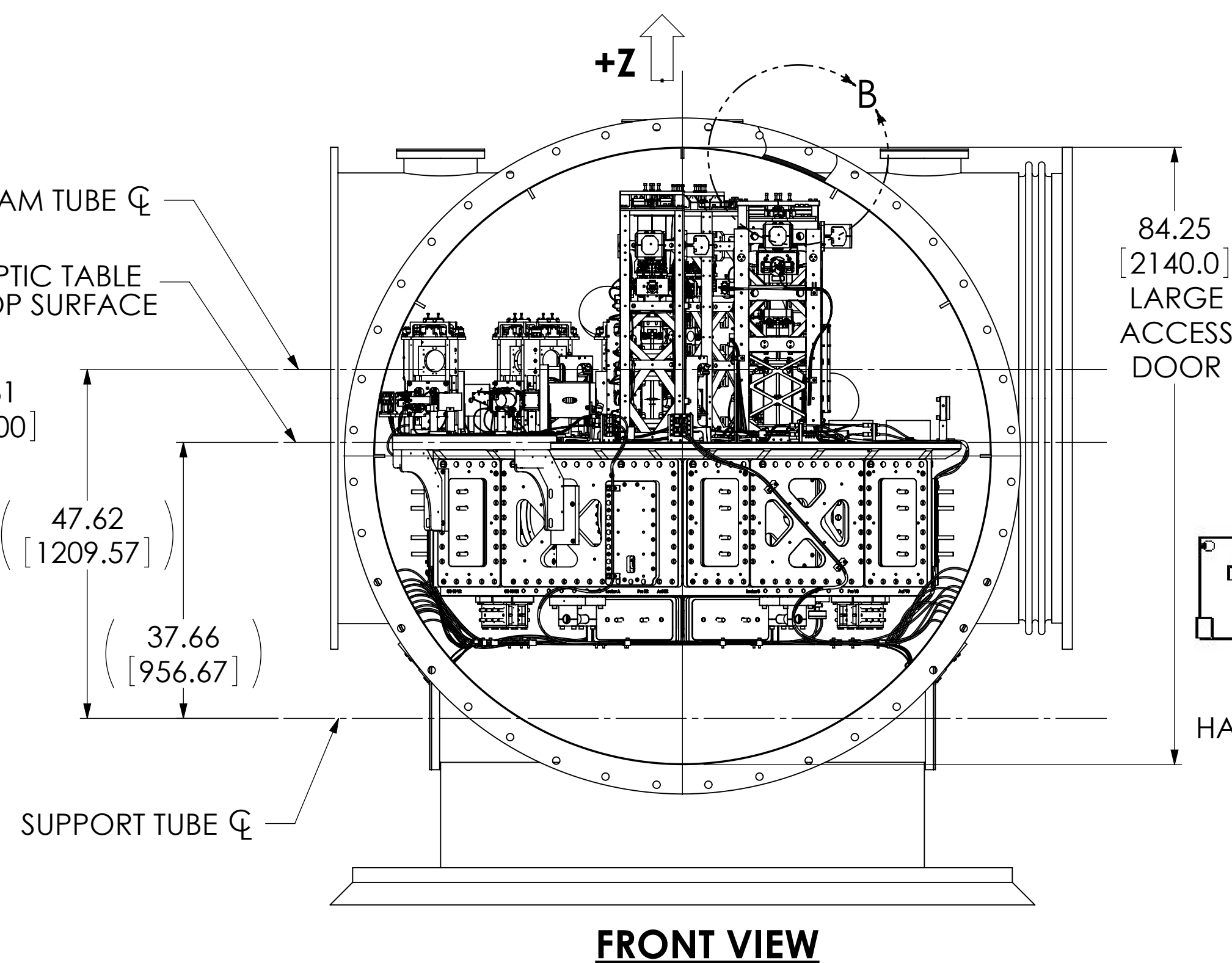
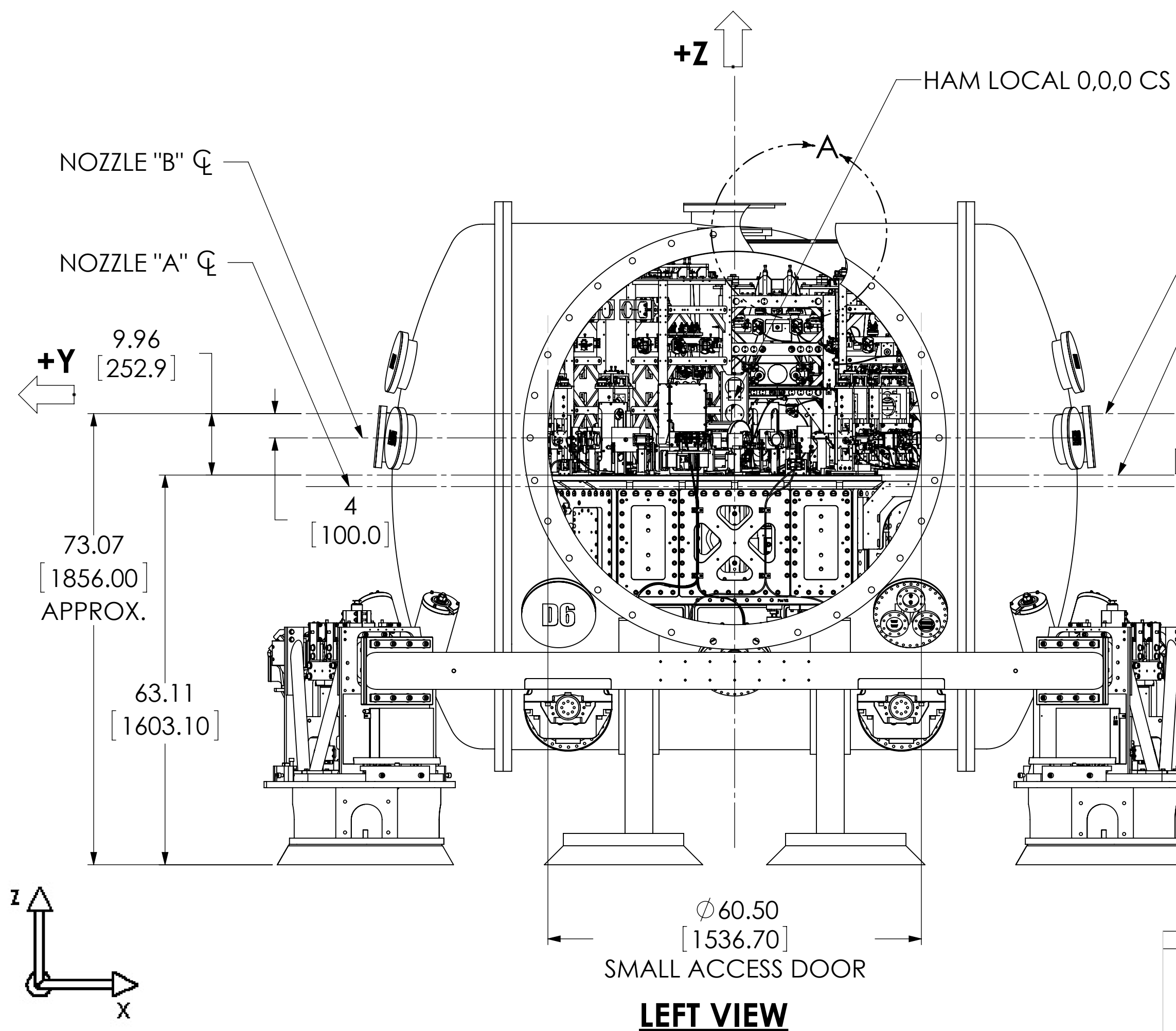
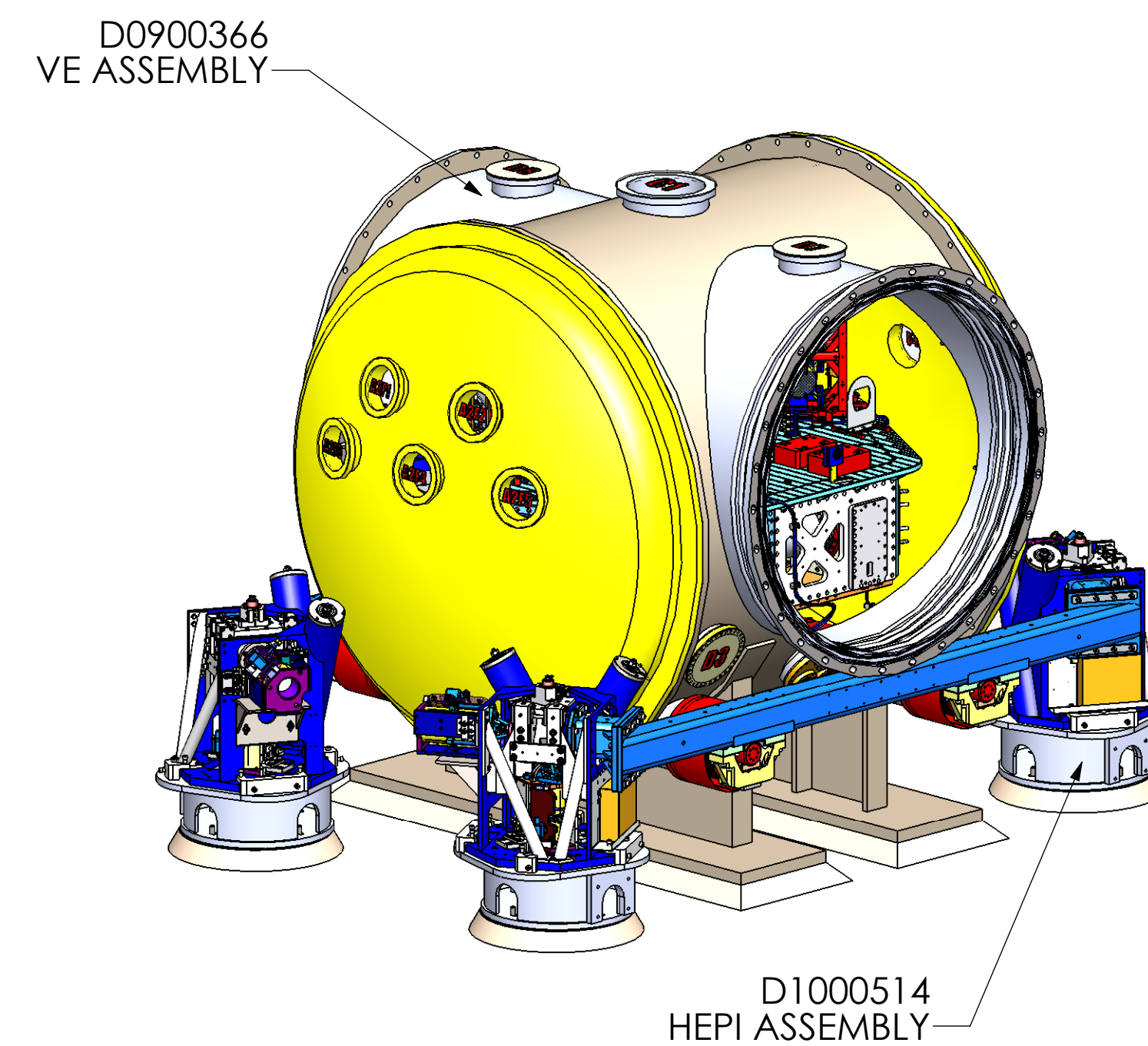
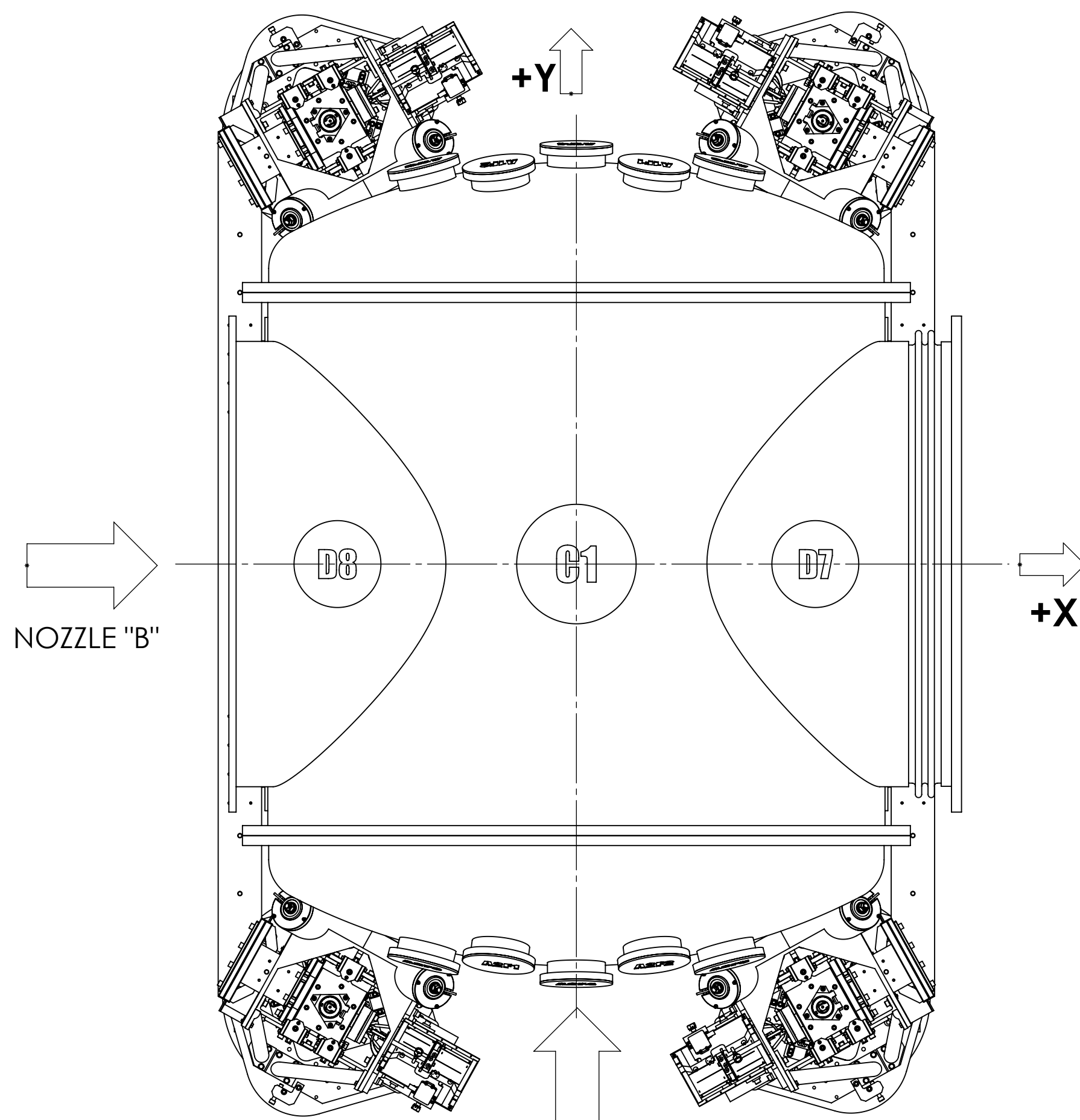
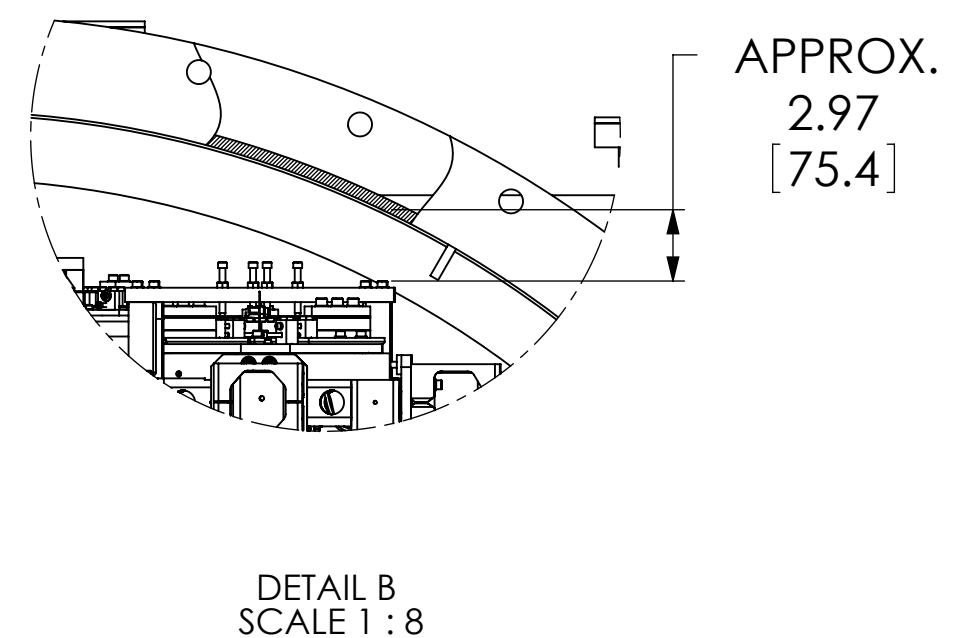
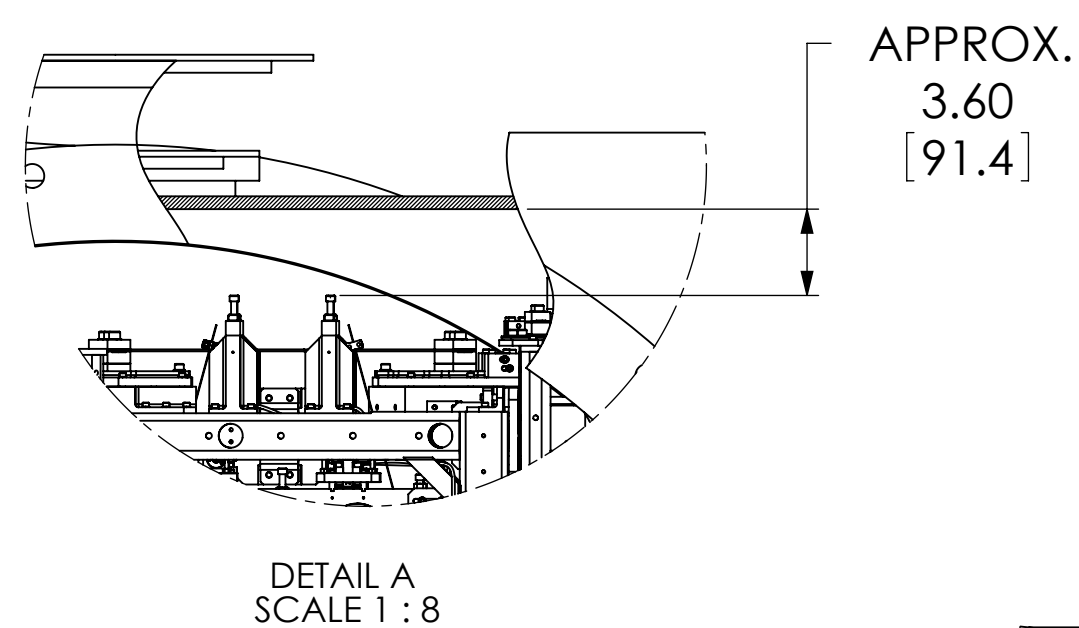


REV.	DATE	DCN #	DRAWING TREE #
v13	05 APR 2016	E1600104-x0	
-	-	-	



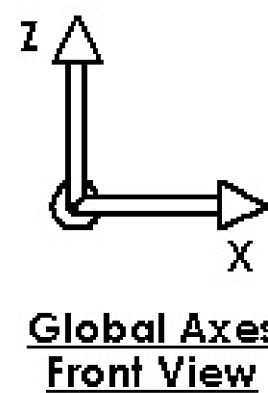
HAM2-L1 GLOBAL COORDINATES (mm)	
X	0.0
Y	-20122.0
Z	0.0

NOTES AND TOLERANCES: (UNLESS OTHERWISE SPECIFIED)

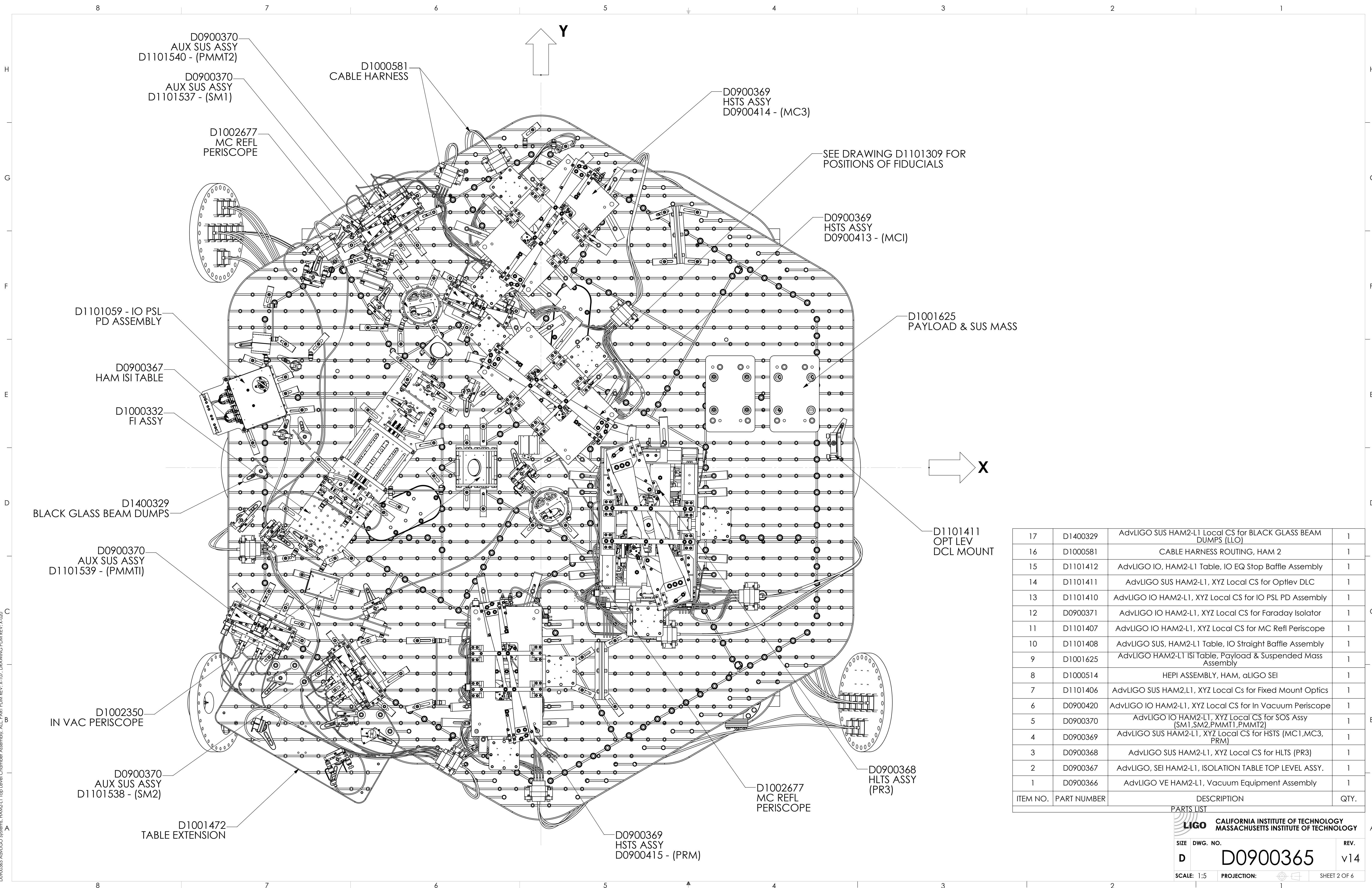
MATERIAL	N/A	FINISH	N/A μ inch
----------	-----	--------	----------------

LIGO CALIFORNIA INSTITUTE OF TECHNOLOGY MASSACHUSETTS INSTITUTE OF TECHNOLOGY	
SYSTEM	ADVANCED LIGO
SUB-SYSTEM	SUS
NEXT ASSY	

PART NAME		HAM2-L1 TOP LEVEL CHAMBER ASSEMBLY, FULLY DEFINED	
DESIGNER	ED CHAVEZ	DATE	27 JUL 2009
DRAFTER	C. TORRIE	DATE	27 JUL 2011
CHECKER	SEE DCC	DATE	
APPROVAL		DATE	
SIZE	D	DWG. NO.	D0900365
REV.	v14	SCALE	1:16
		PROJECTION	
		SHEET	1 OF 6



D0900365 Adv LIGO Systems: HAM2-L1 Top Level Chamber Assembly: ALL PART PDM REV: X:07, DRAWING PDM REV: X:00



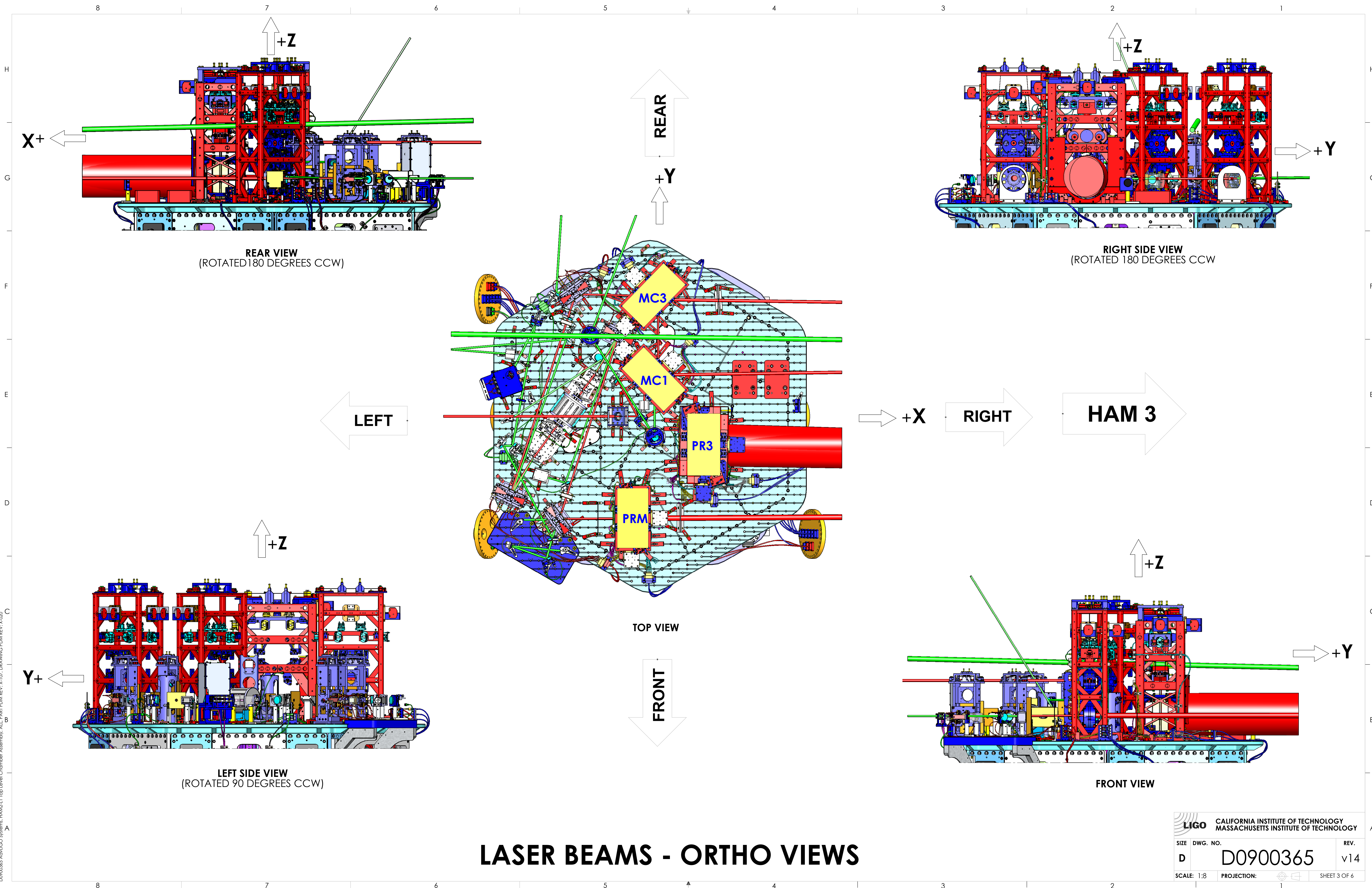
D0900365 AdvLIGO Systems: HAM2-L1 Top Level Chamber Assembly: ALL PART PDM REV: X-107, DRAWING PDM REV: X-020

ITEM NO.	PART NUMBER	DESCRIPTION	QTY.
17	D1400329	AdvLIGO SUS HAM2-L1 Local CS for BLACK GLASS BEAM DUMPS (LLO)	1
16	D1000581	CABLE HARNESS ROUTING, HAM 2	1
15	D1101412	AdvLIGO IO, HAM2-L1 Table, IO EQ Stop Baffle Assembly	1
14	D1101411	AdvLIGO SUS HAM2-L1, XYZ Local CS for Optlev DLC	1
13	D1101410	AdvLIGO IO HAM2-L1, XYZ Local CS for IO PSL PD Assembly	1
12	D0900371	AdvLIGO IO HAM2-L1, XYZ Local CS for Faraday Isolator	1
11	D1101407	AdvLIGO IO HAM2-L1, XYZ Local CS for MC Refl Periscope	1
10	D1101408	AdvLIGO SUS, HAM2-L1 Table, IO Straight Baffle Assembly	1
9	D1001625	AdvLIGO HAM2-L1 ISI Table, Payload & Suspended Mass Assembly	1
8	D1000514	HEPI ASSEMBLY, HAM, aLIGO SEI	1
7	D1101406	AdvLIGO SUS HAM2,L1, XYZ Local Cs for Fixed Mount Optics	1
6	D0900420	AdvLIGO IO HAM2-L1, XYZ Local CS for In Vacuum Periscope	1
5	D0900370	AdvLIGO IO HAM2-L1, XYZ Local CS for SOS Assy (SM1,SM2,PMMT1,PMMT2)	1
4	D0900369	AdvLIGO SUS HAM2-L1, XYZ Local CS for HSTS (MC1,MC3,PRM)	1
3	D0900368	AdvLIGO SUS HAM2-L1, XYZ Local CS for HLTS (PR3)	1
2	D0900367	AdvLIGO, SEI HAM2-L1, ISOLATION TABLE TOP LEVEL ASSY.	1
1	D0900366	AdvLIGO VE HAM2-L1, Vacuum Equipment Assembly	1

PARTS LIST

LIGO CALIFORNIA INSTITUTE OF TECHNOLOGY
MASSACHUSETTS INSTITUTE OF TECHNOLOGY

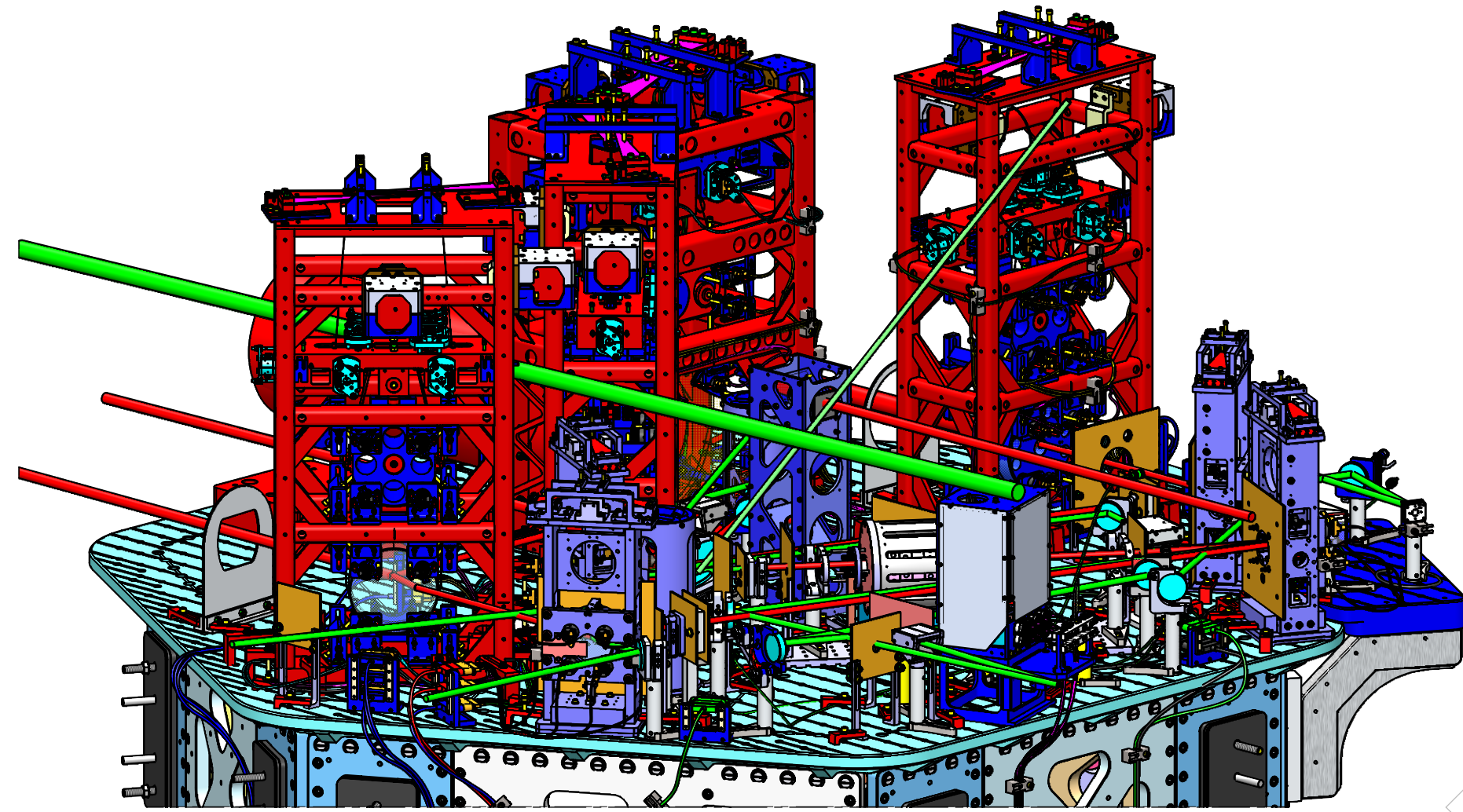
SIZE	DWG. NO.	REV.
D	D0900365	v14
SCALE: 1:5	PROJECTION:	SHEET 2 OF 6



LASER BEAMS - ORTHO VIEWS

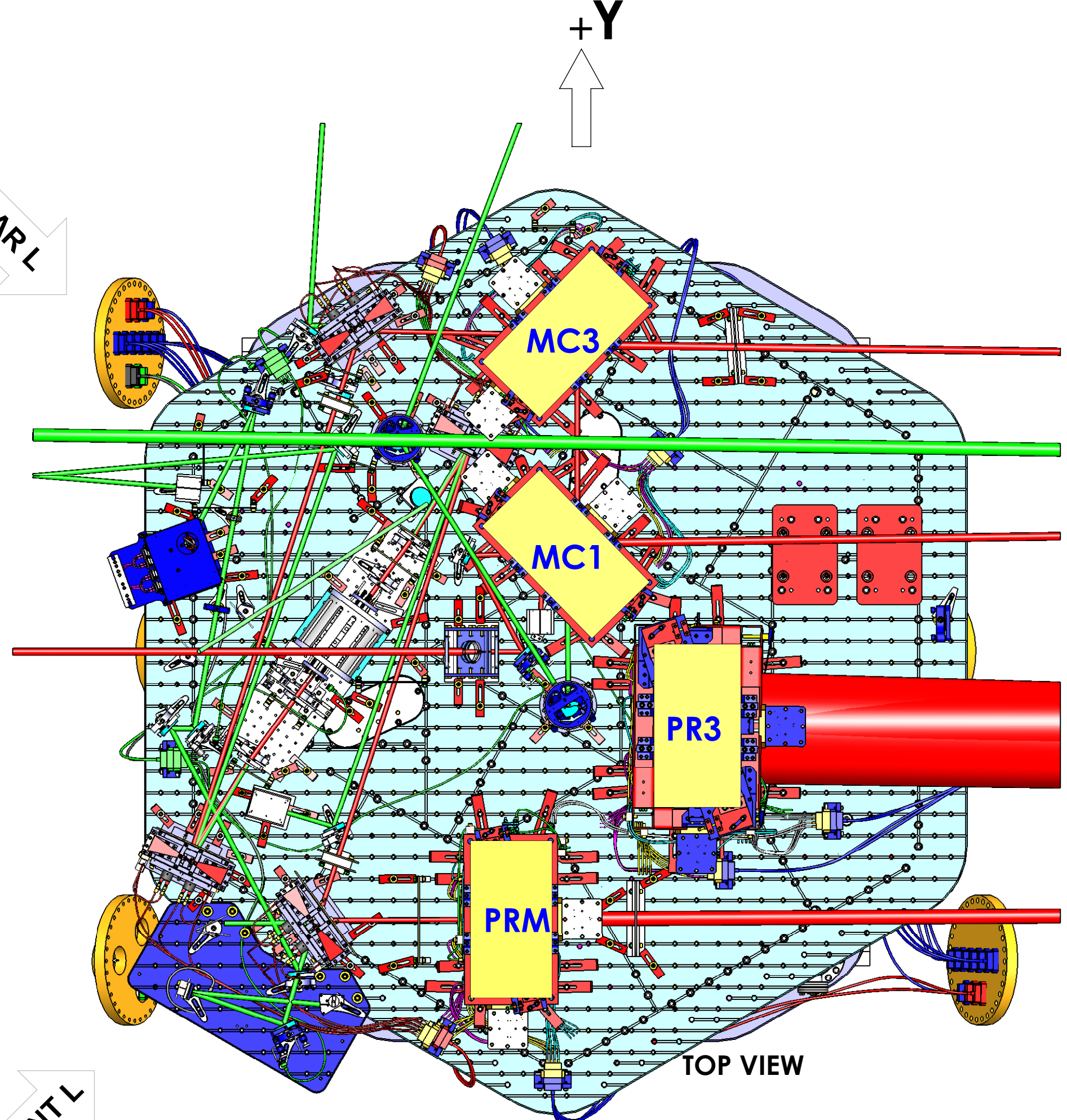
CALIFORNIA INSTITUTE OF TECHNOLOGY MASSACHUSETTS INSTITUTE OF TECHNOLOGY		REV.
SIZE	DWG. NO.	REV.
D	D0900365	v14
SCALE: 1:8	PROJECTION:	SHEET 3 OF 6

DDP00365-Asst LIGO Systems: HAM2-L1 Top Level Chamber Assembly: ALL PART PDM REV: X:107 DRAWING PDM REV: X:020



ISO REAR - LEFT

REAR L

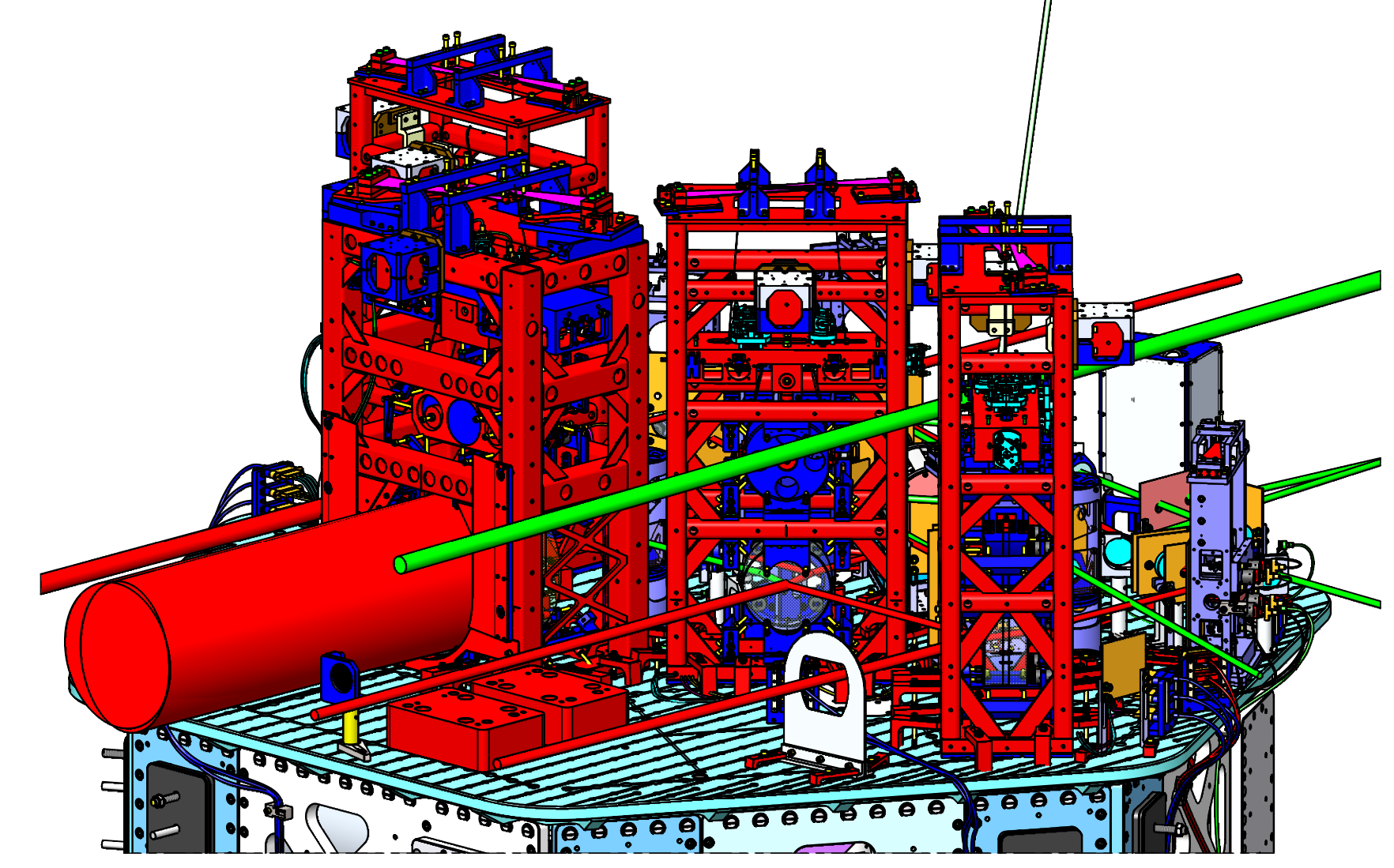


TOP VIEW

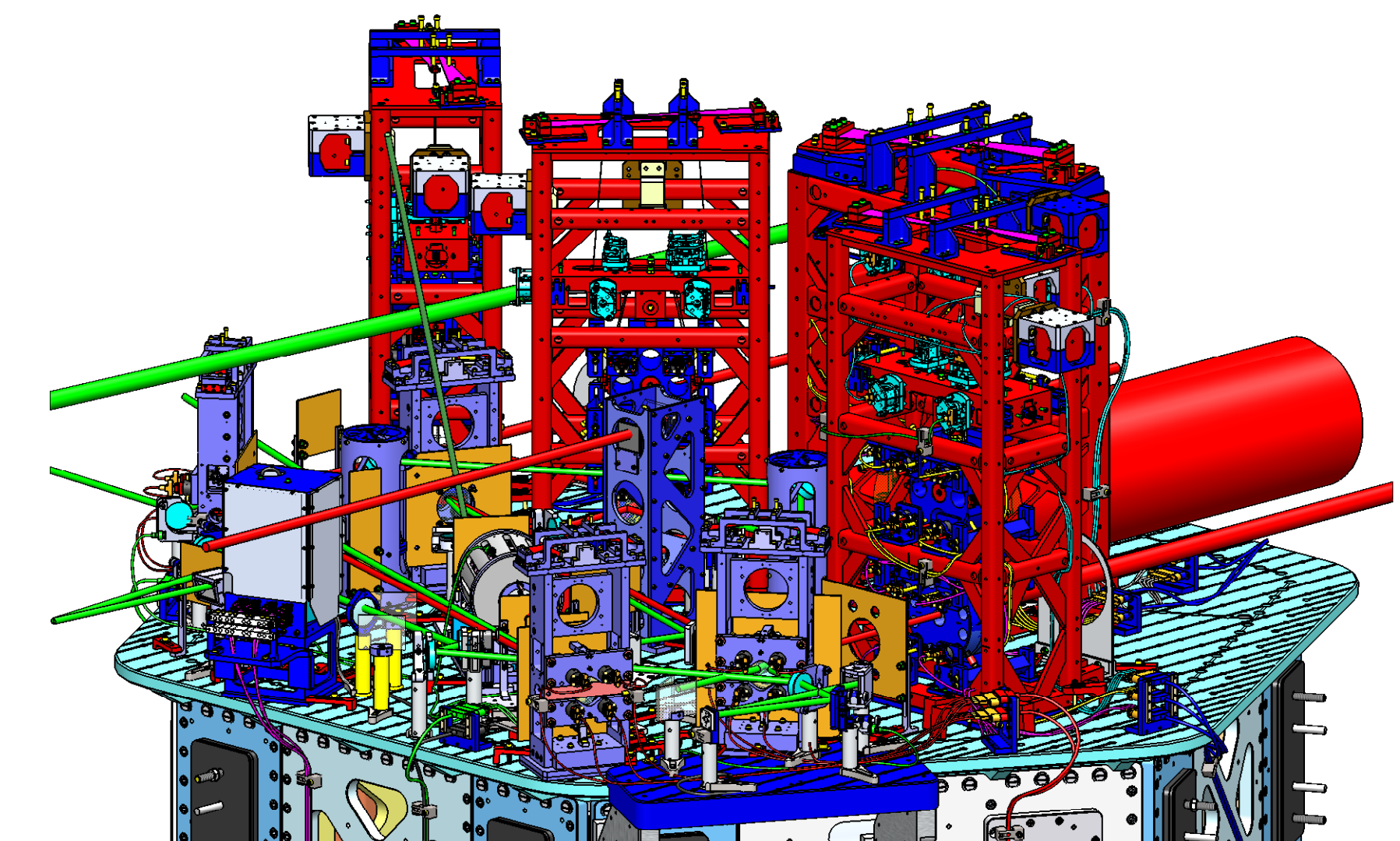
+Y

+X

REAR R



ISO REAR - RIGHT

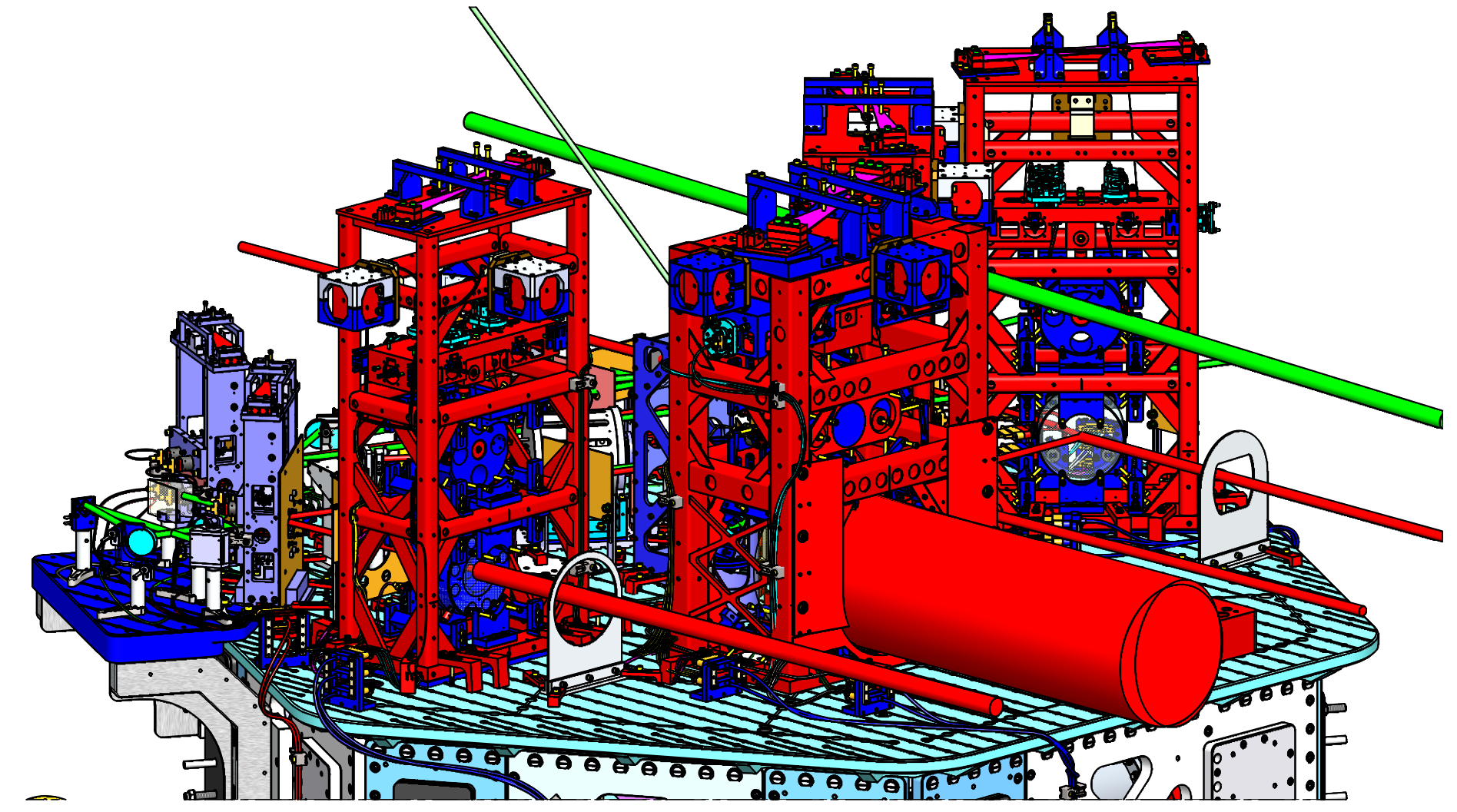


ISO FRONT - LEFT

FRONT L

FRONT R

HAM 3



ISO FRONT - RIGHT

LASER BEAMS - ISO VIEWS

CALIFORNIA INSTITUTE OF TECHNOLOGY MASSACHUSETTS INSTITUTE OF TECHNOLOGY	
SIZE DWG. NO.	REV.
D D0900365	v14
SCALE: 1:8	PROJECTION: SHEET 4 OF 6

DDP0365-Asst LIGO Systems: HAM2-L1 Top Level Chamber Assembly: ALL PART PDM REV: X-107 DRAWING PDM REV: X-020

8

7

6

5

4

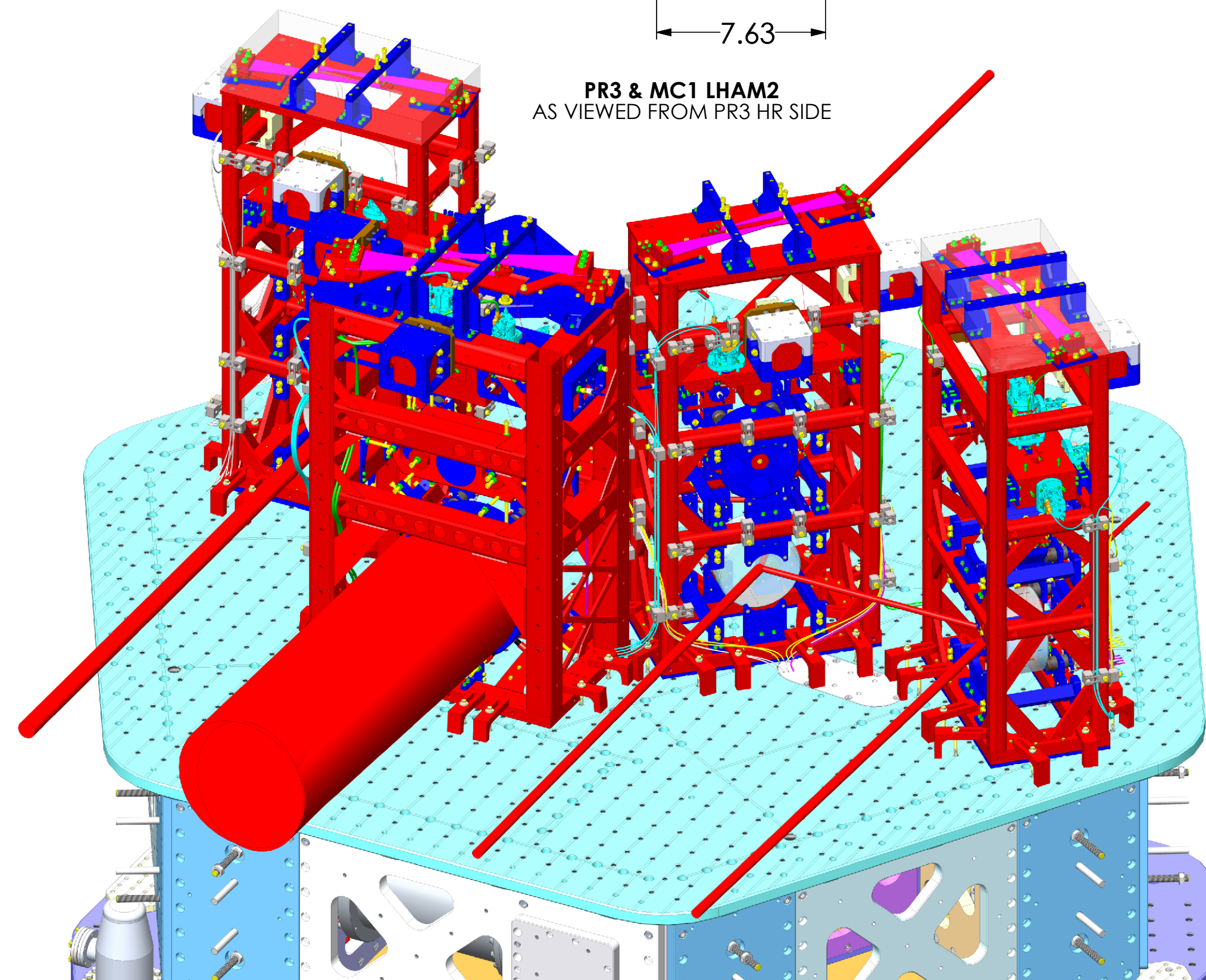
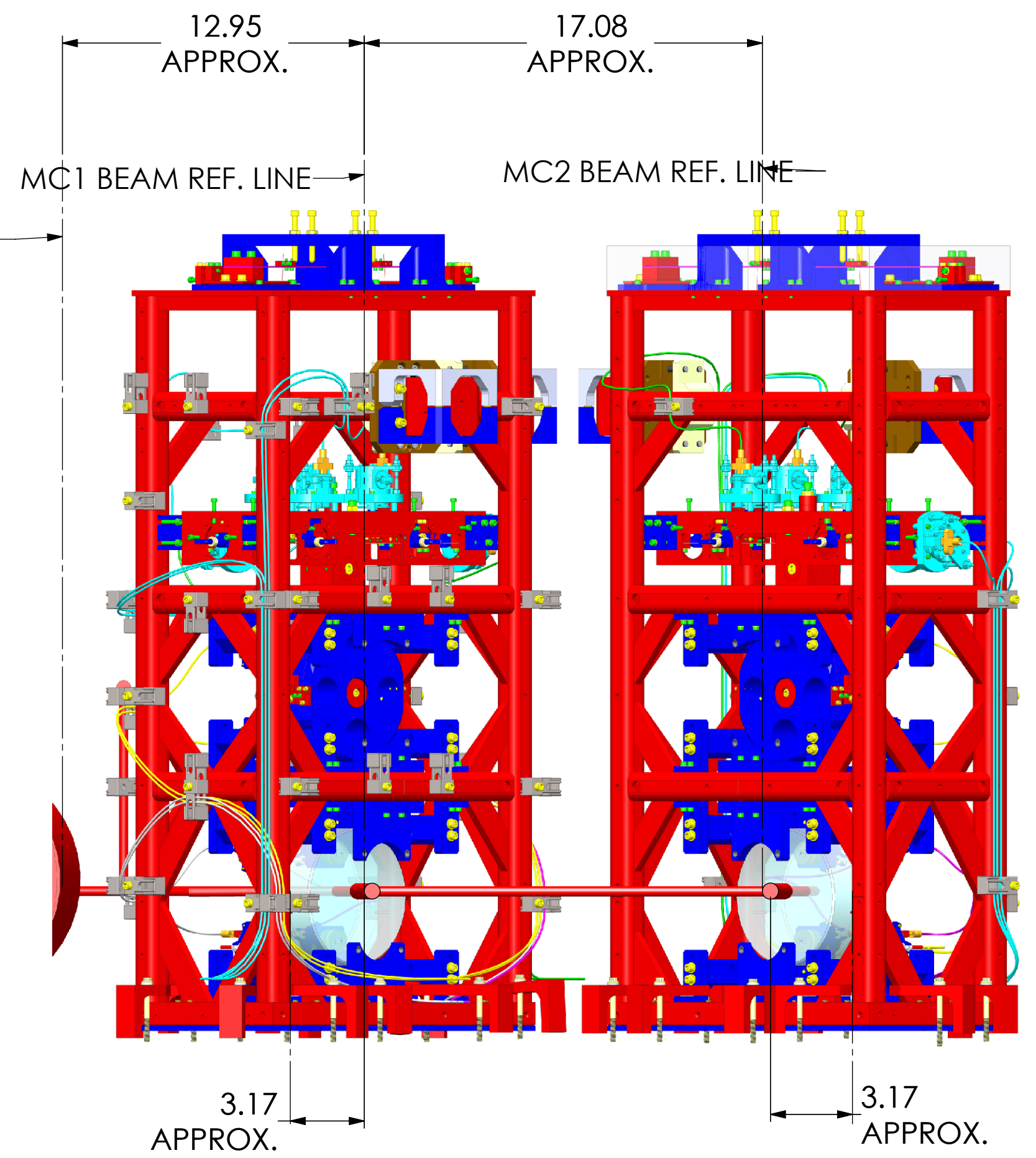
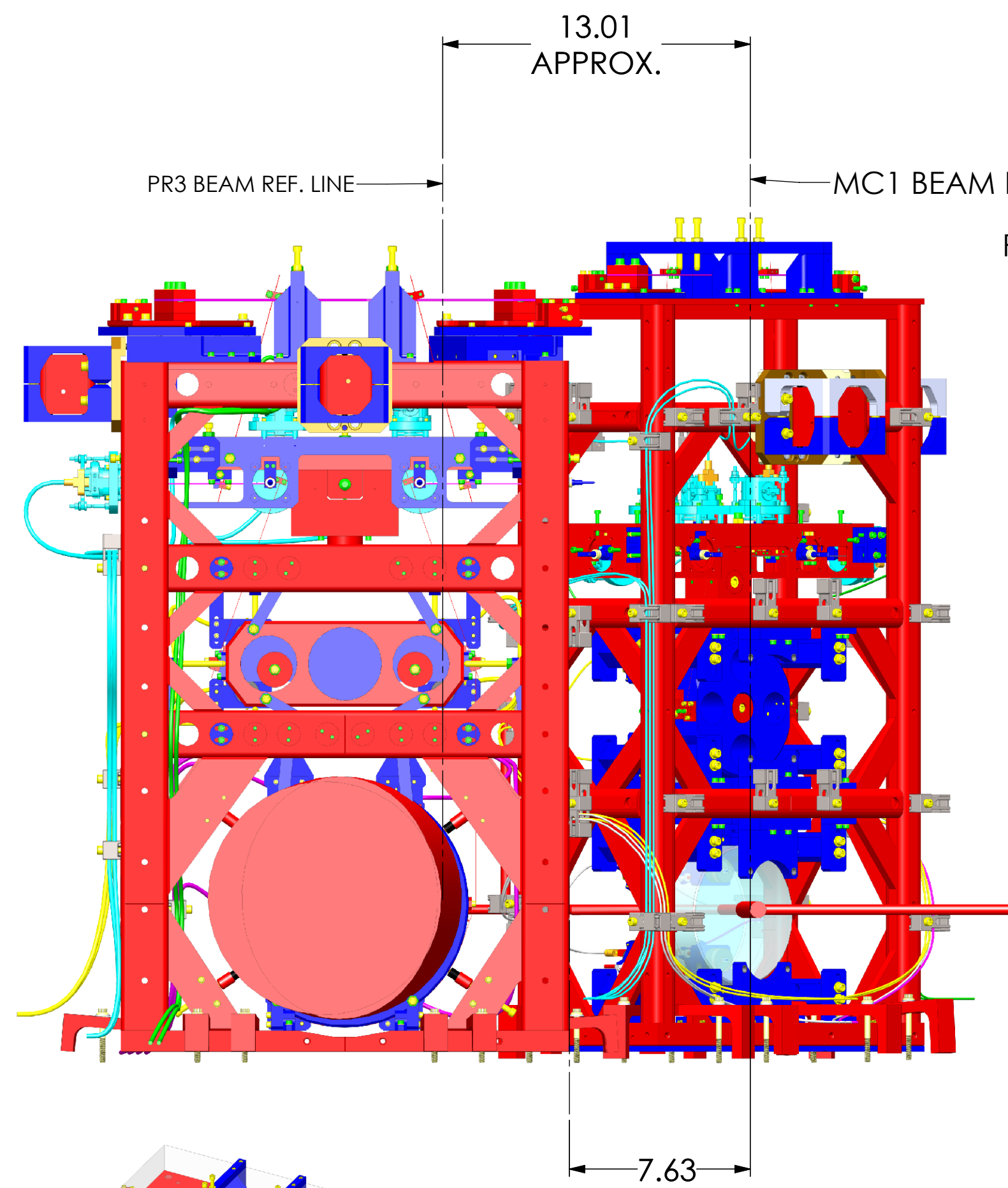
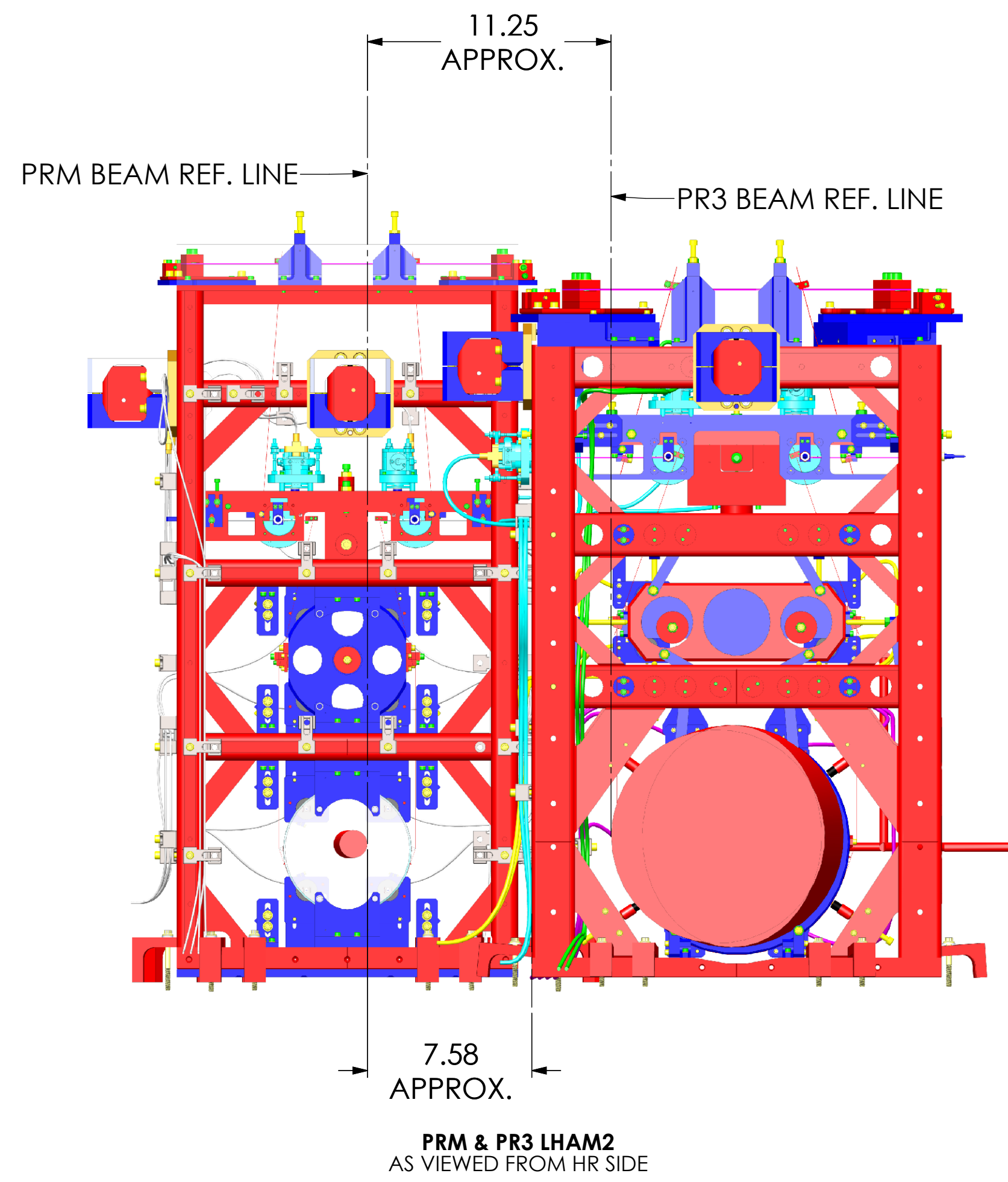
3

2

1

H
G
F
E
D
C
B
A

H
G
F
E
D
C
B
A



LASER BEAMS HR SIDE CLEARANCES

LIGO CALIFORNIA INSTITUTE OF TECHNOLOGY MASSACHUSETTS INSTITUTE OF TECHNOLOGY	
SIZE DWG. NO.	REV.
D D0900365	v14
SCALE: NTS	PROJECTION:
SHEET 5 OF 6	

8

7

6

5

4

3

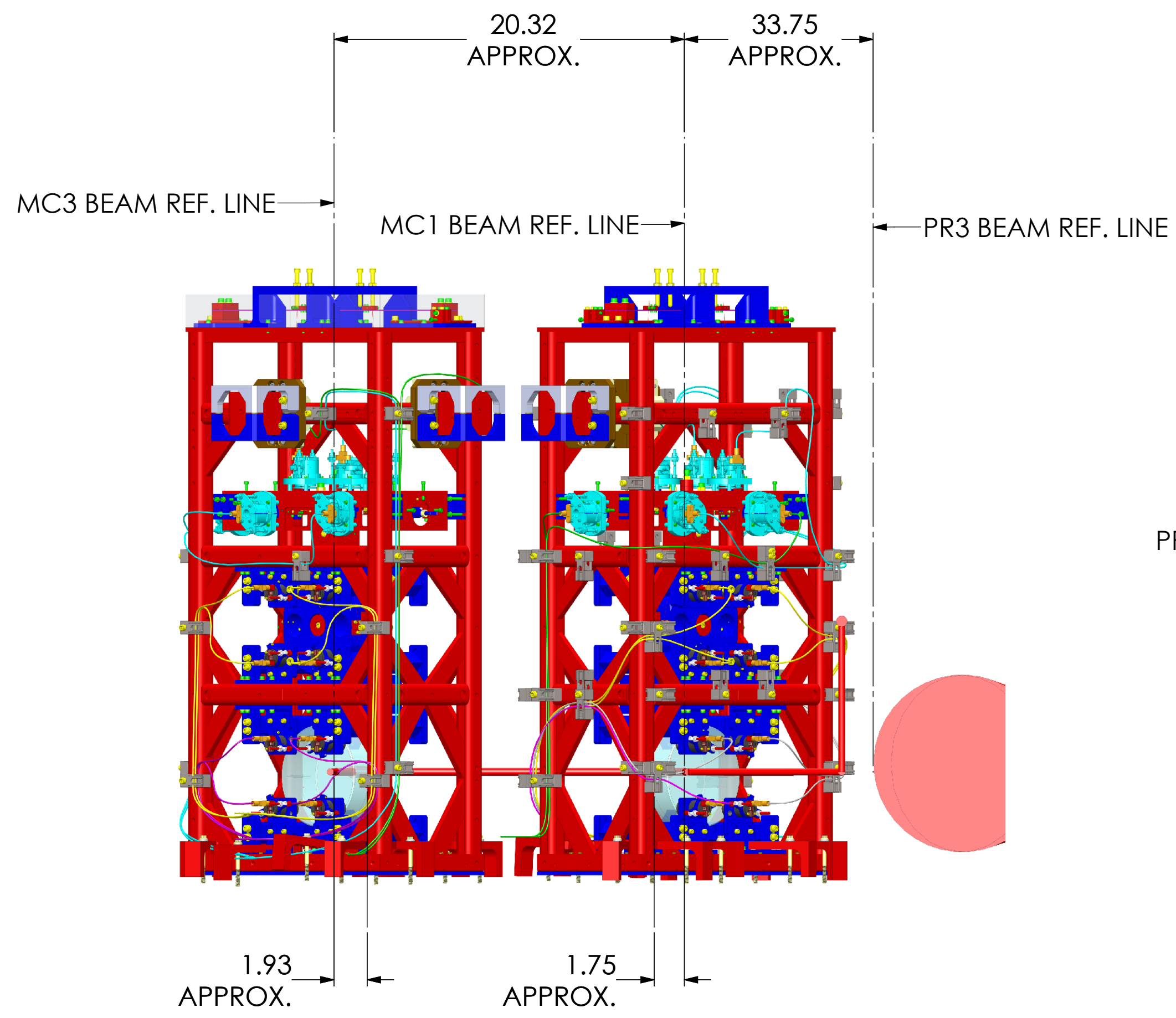
2

1

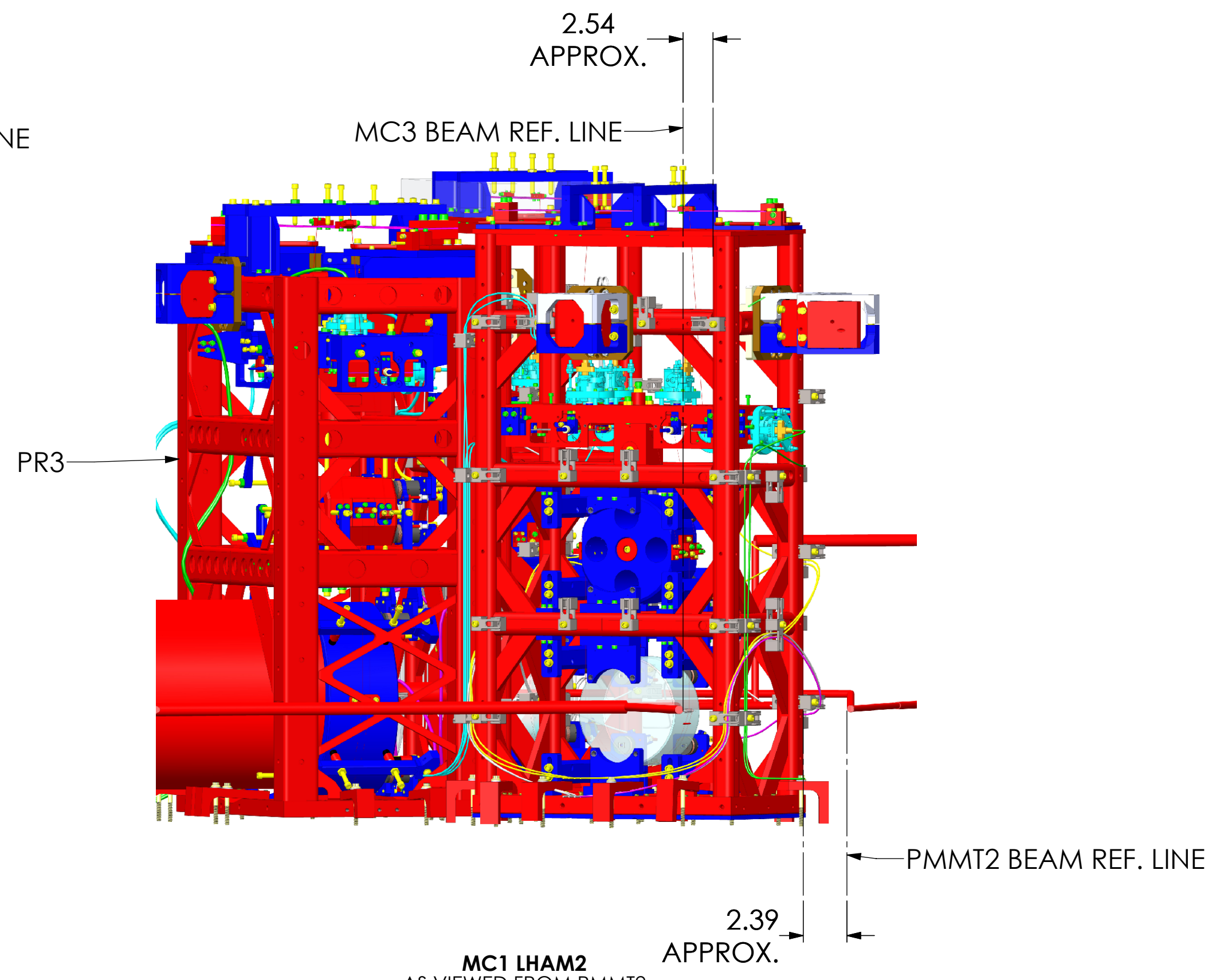
8 7 6 5 4 3 2 1

H
G
F
E
D
C
B
A

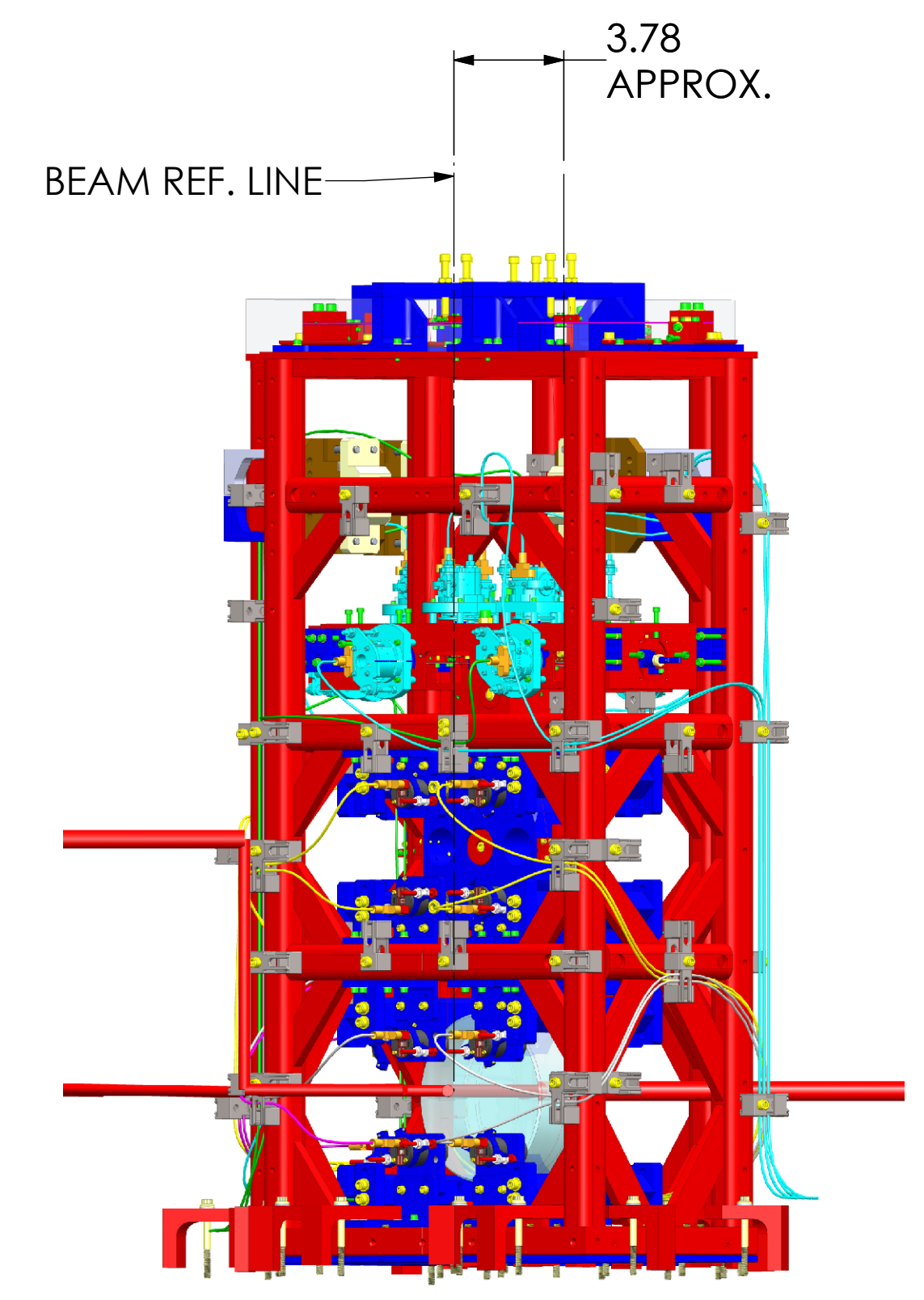
H
G
F
E
D
C
B
A



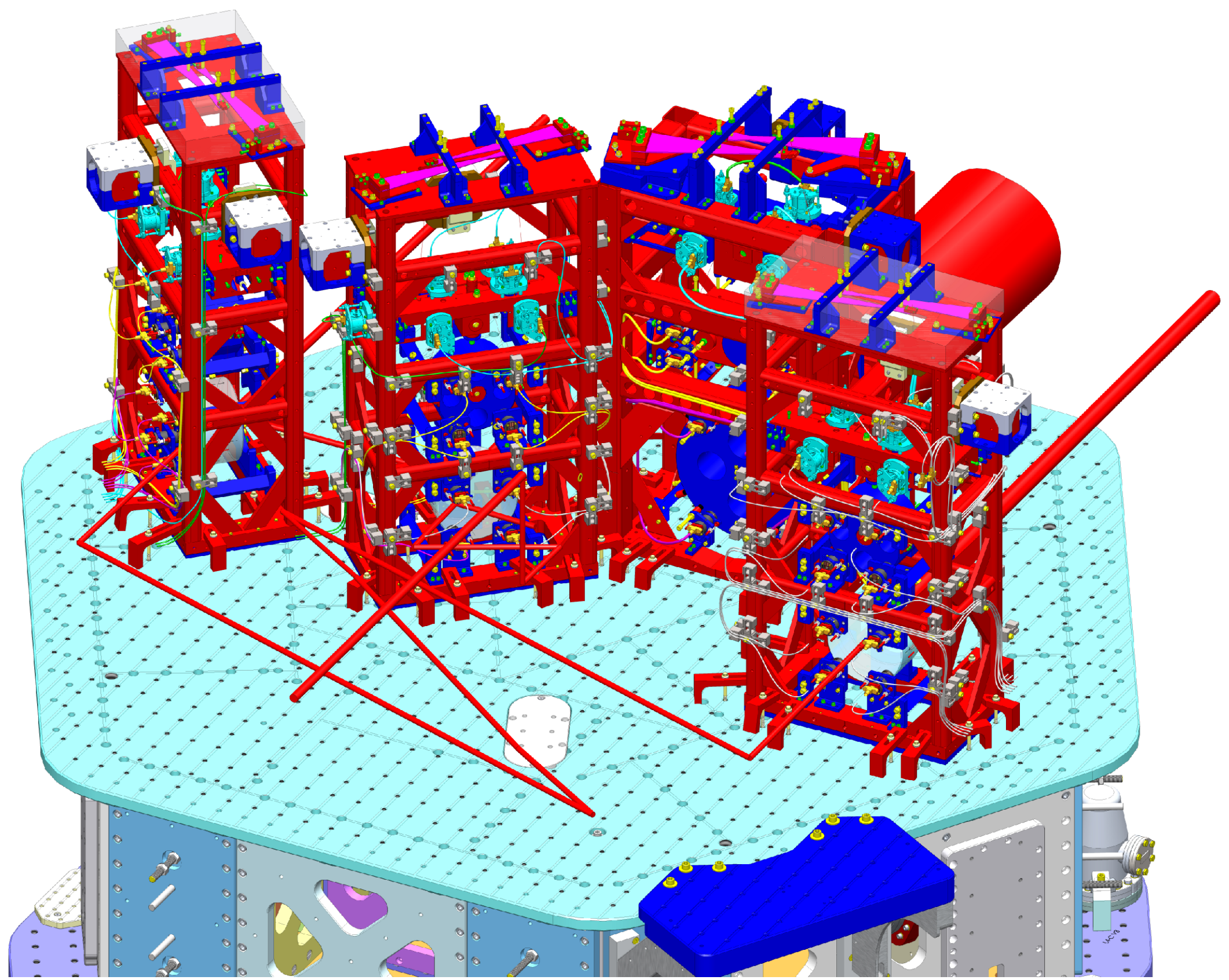
MC3 & MC1 LHAM2
AS VIEWED FROM AR SIDE



MC1 LHAM2
AS VIEWED FROM PMMT2



MC1 LHAM2
ISO VIEW, REAR RIGHT



ISO VIEW, FRONT LEFT

LASER BEAMS AR SIDE CLEARANCES

LIGO CALIFORNIA INSTITUTE OF TECHNOLOGY MASSACHUSETTS INSTITUTE OF TECHNOLOGY	
SIZE DWG. NO.	REV.
D D0900365	v14
SCALE: NTS	PROJECTION:
SHEET 6 OF 6	

8 7 6 5 4 3 2 1

D:\D0900365_Adu\LIGO Systems_HAM2\L1 Top Level Chamber Assembly_All Part PDM Rev.: DRAWING PDM REV: X:20