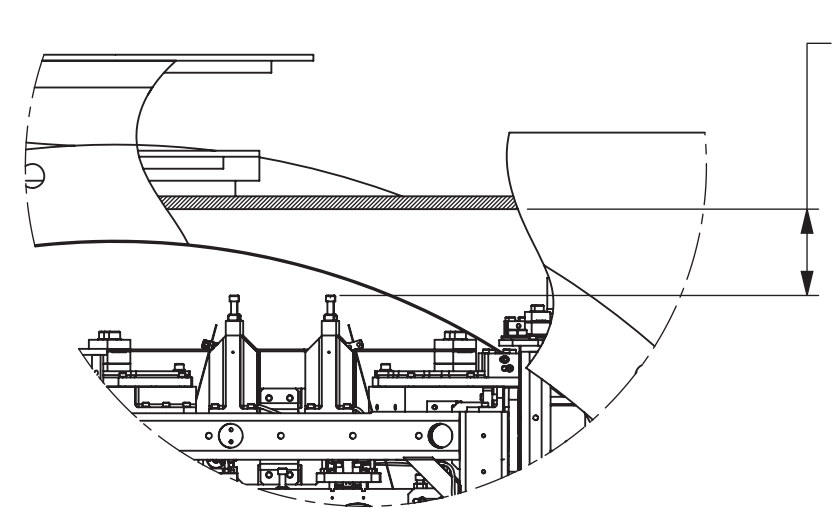
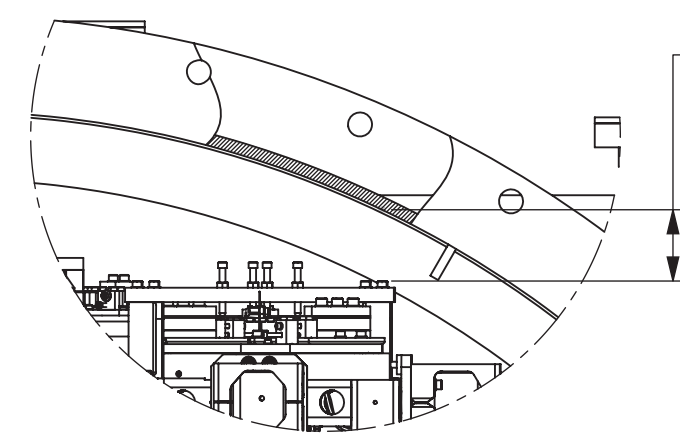


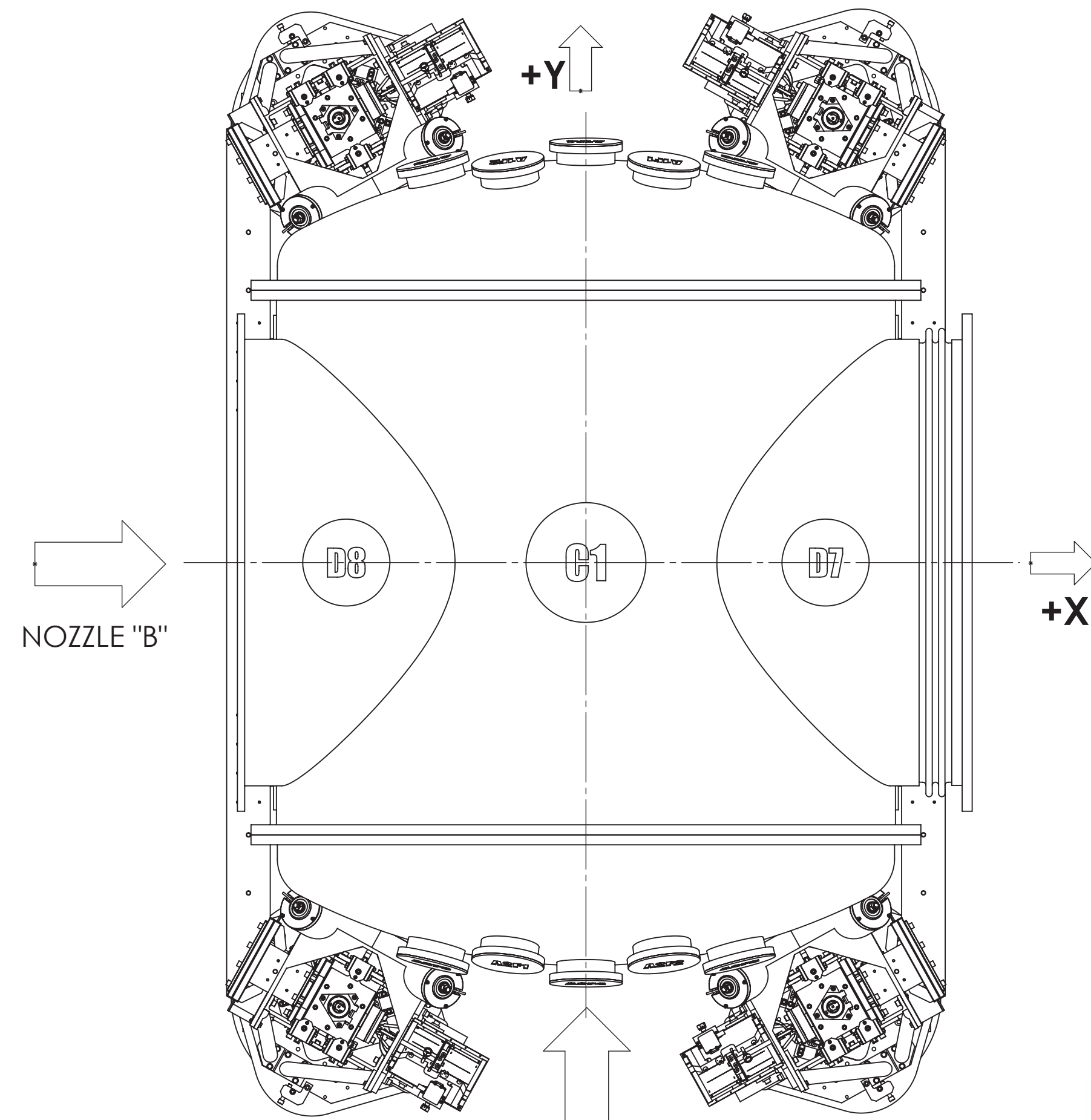
REV.	DATE	DCN #	DRAWING TREE #
v11	15 SEP 2014	E1400366-x0	



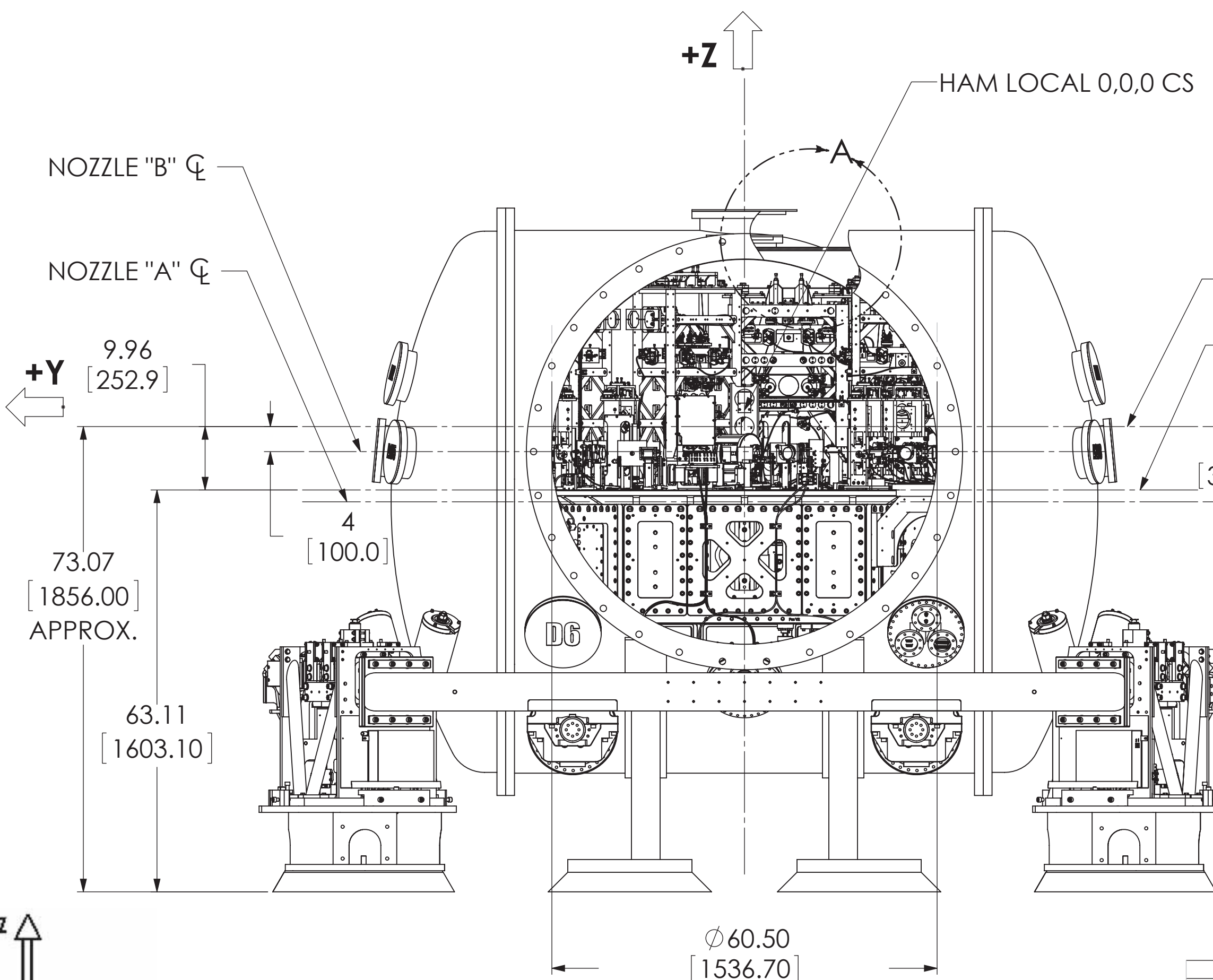
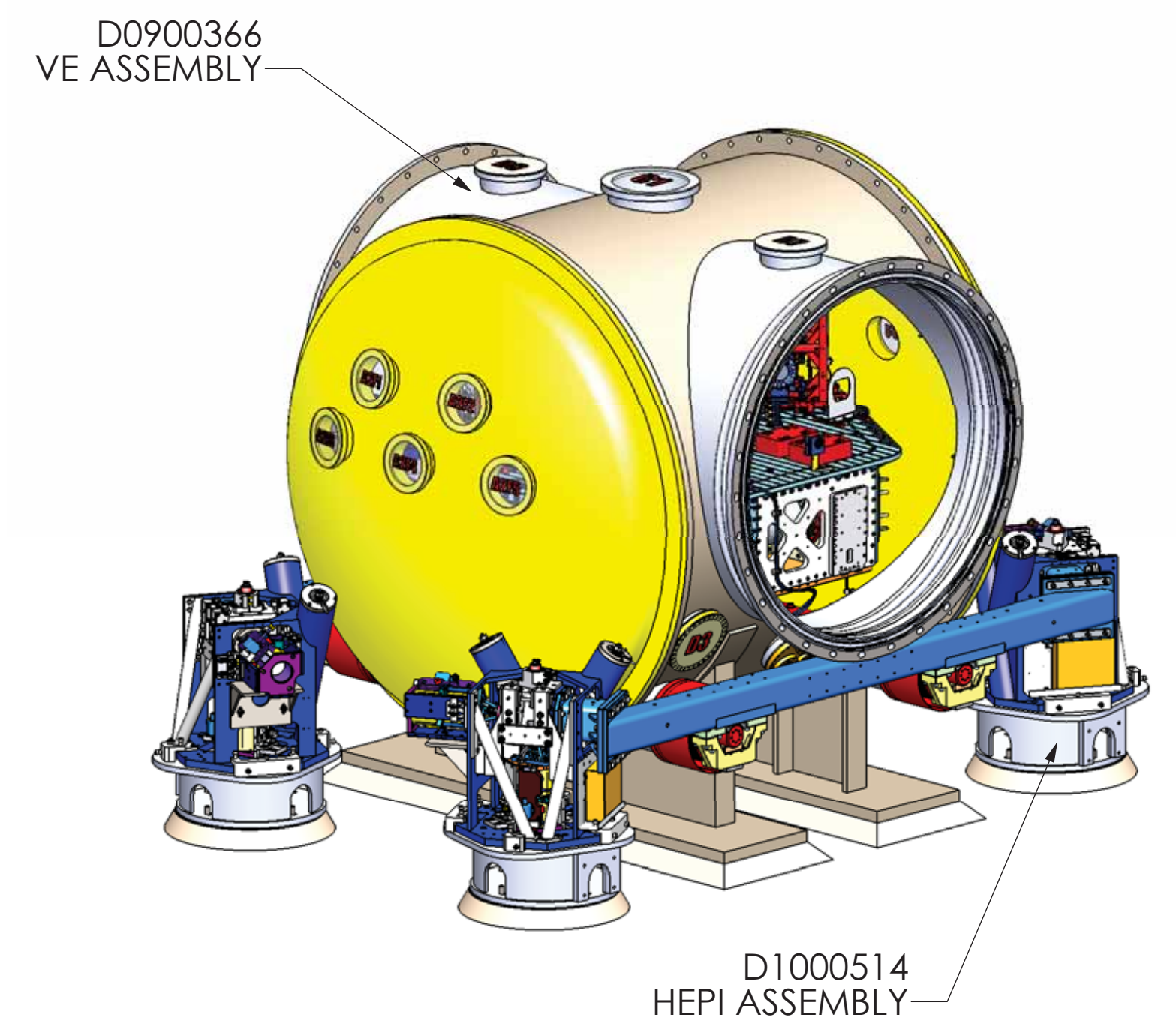
DETAIL A  
SCALE 1:8



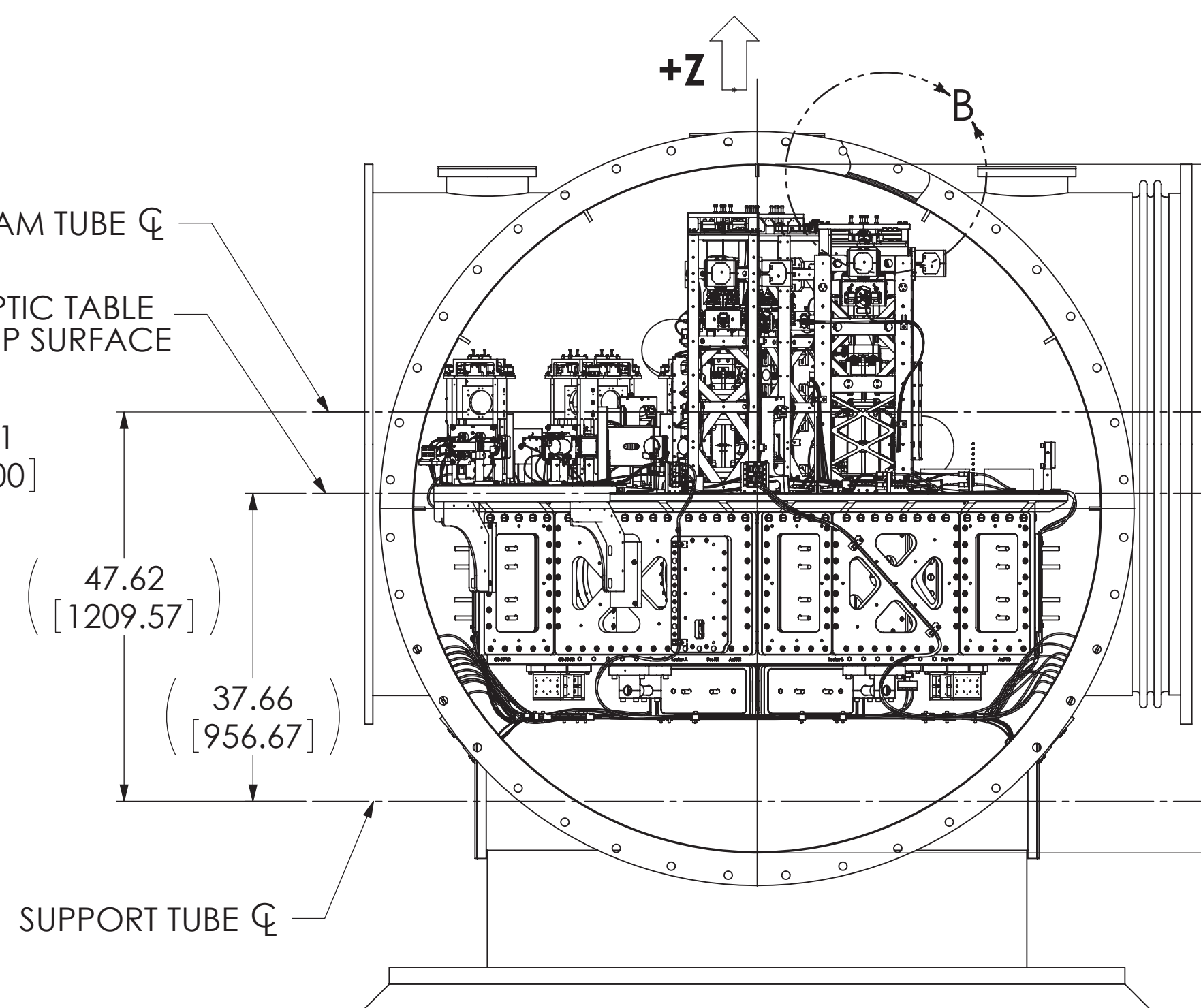
DETAIL B  
SCALE 1:8



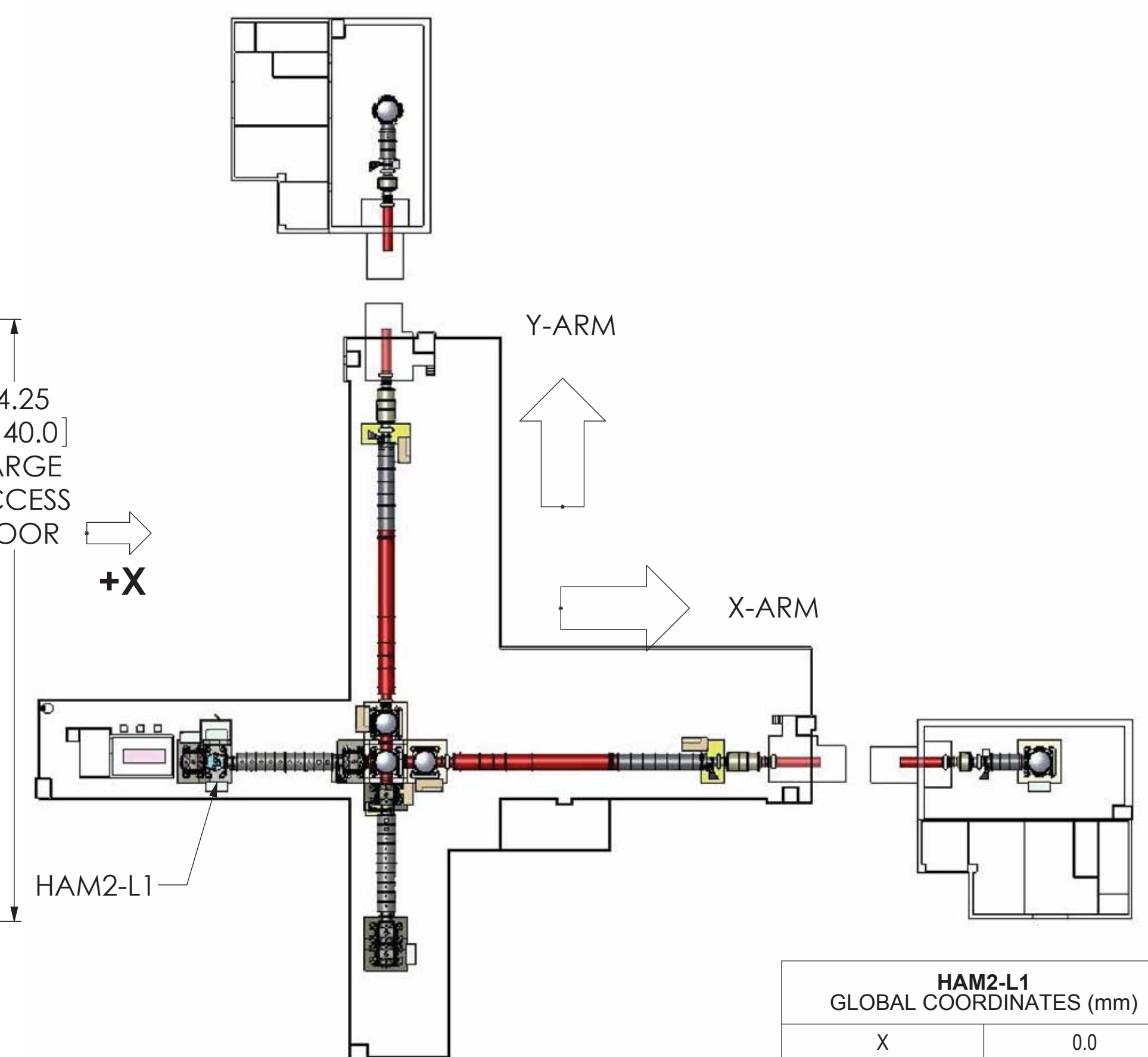
NOZZLE "A"  
TOP VIEW



LEFT VIEW



FRONT VIEW



HAM2-L1 GLOBAL COORDINATES (mm)	
X	0.0
Y	-20122.0
Z	0.0



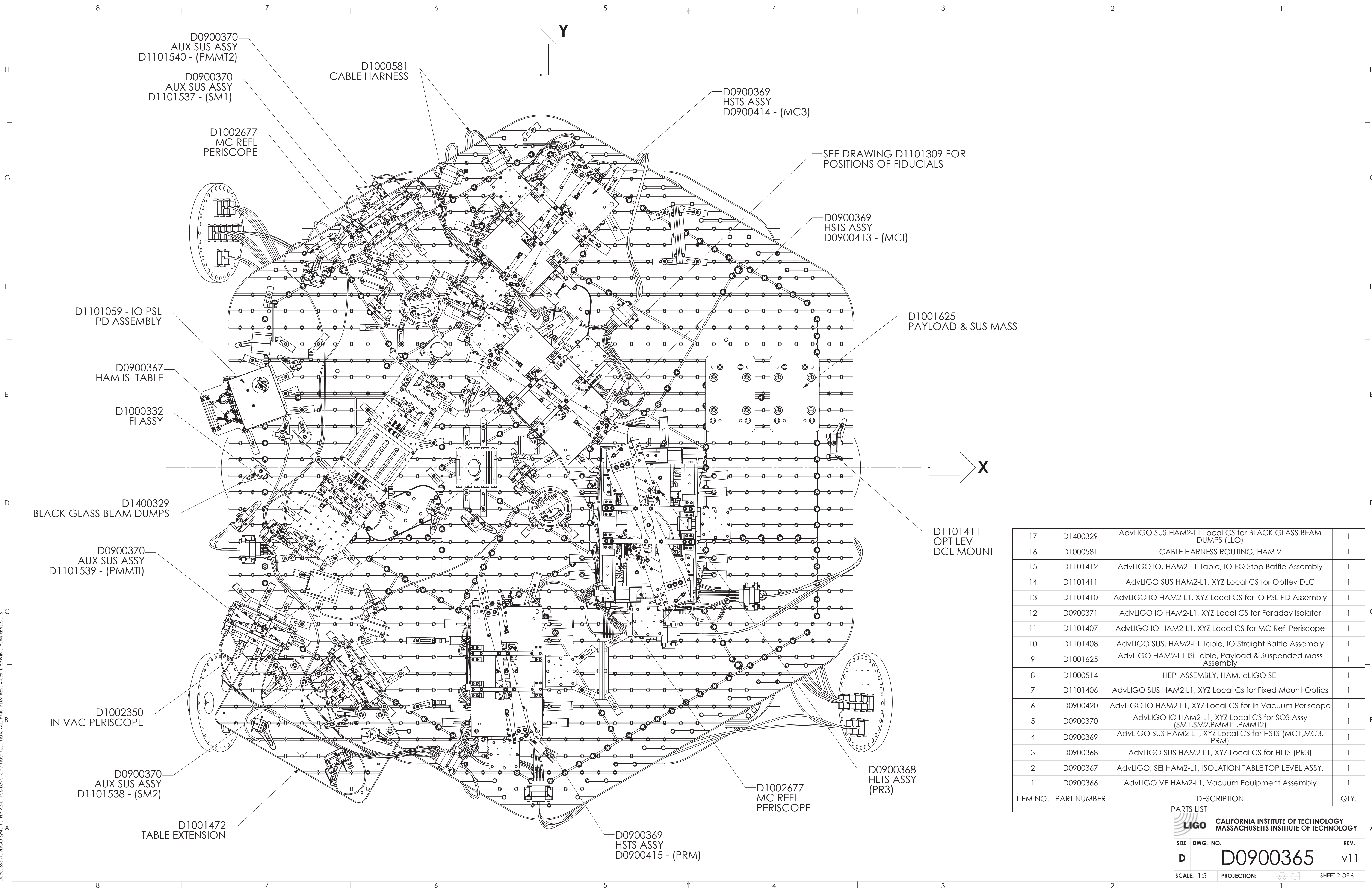
Global Axes  
Front View

NOTES AND TOLERANCES: (UNLESS OTHERWISE SPECIFIED)

MATERIAL	N/A	FINISH	N/A μinch
----------	-----	--------	-----------

CALIFORNIA INSTITUTE OF TECHNOLOGY MASSACHUSETTS INSTITUTE OF TECHNOLOGY	
SYSTEM	ADVANCED LIGO
SUB-SYSTEM	SUS
NEXT ASSY	

PART NAME		HAM2-L1 TOP LEVEL CHAMBER ASSEMBLY, FULLY DEFINED	
DESIGNER	ED CHAVEZ	DATE	27 JUL 2009
DRAFTER	C. TORRIE	DATE	27 JUL 2011
CHECKER	SEE DCC	DATE	
APPROVAL		DATE	
SIZE	D	DWG. NO.	D0900365
REV.	v11	SCALE:	1:16
PROJECTION:			
SHEET 1 OF 6			



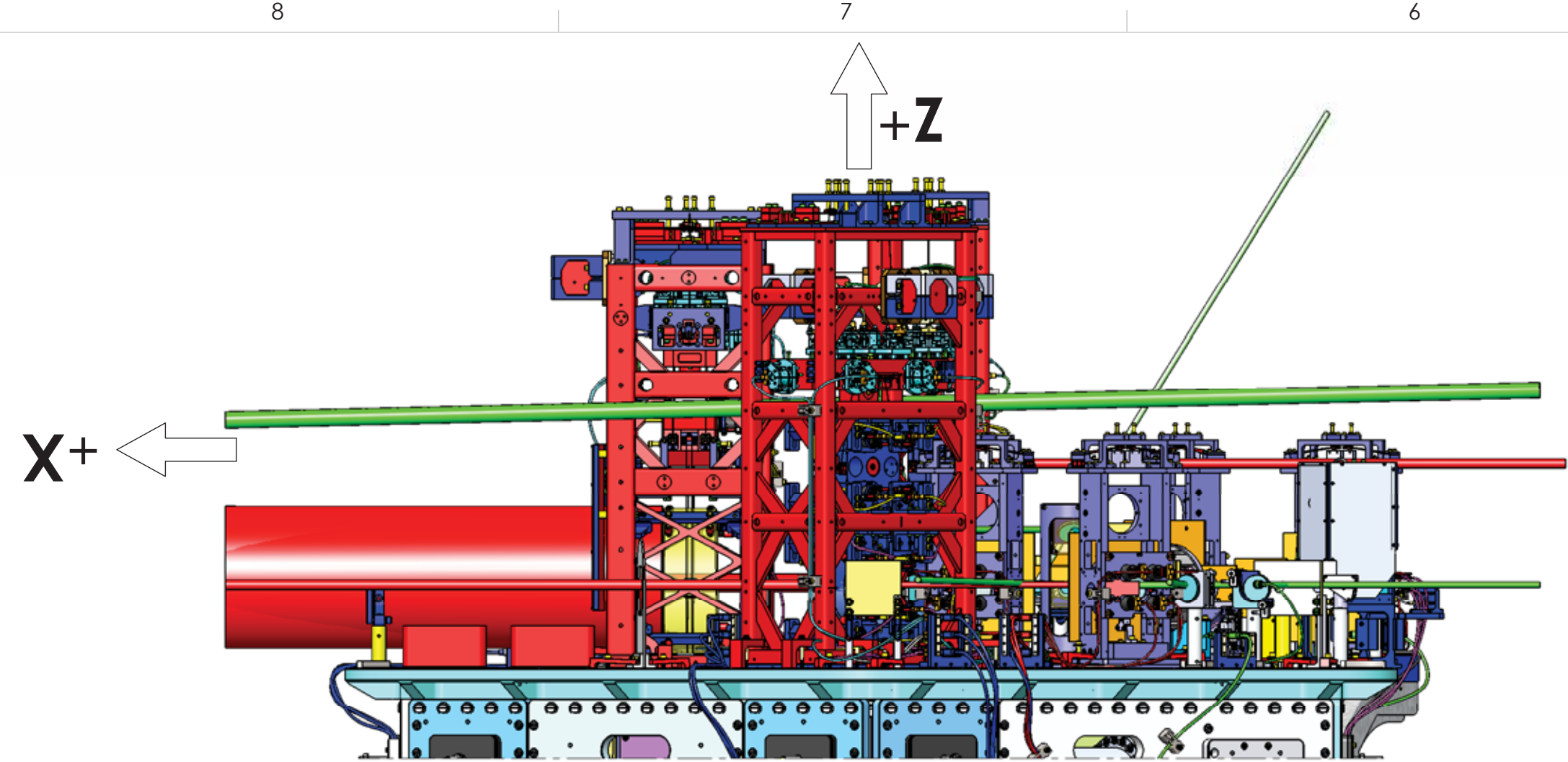
ITEM NO.	PART NUMBER	DESCRIPTION	QTY.
17	D1400329	AdvLIGO SUS HAM2-L1 Local CS for BLACK GLASS BEAM DUMPS (LLO)	1
16	D1000581	CABLE HARNESS ROUTING, HAM 2	1
15	D1101412	AdvLIGO IO, HAM2-L1 Table, IO EQ Stop Baffle Assembly	1
14	D1101411	AdvLIGO SUS HAM2-L1, XYZ Local CS for Optlev DLC	1
13	D1101410	AdvLIGO IO HAM2-L1, XYZ Local CS for IO PSL PD Assembly	1
12	D0900371	AdvLIGO IO HAM2-L1, XYZ Local CS for Faraday Isolator	1
11	D1101407	AdvLIGO IO HAM2-L1, XYZ Local CS for MC Refl Periscope	1
10	D1101408	AdvLIGO SUS, HAM2-L1 Table, IO Straight Baffle Assembly	1
9	D1001625	AdvLIGO HAM2-L1 ISI Table, Payload & Suspended Mass Assembly	1
8	D1000514	HEPI ASSEMBLY, HAM, aLIGO SEI	1
7	D1101406	AdvLIGO SUS HAM2,L1, XYZ Local Cs for Fixed Mount Optics	1
6	D0900420	AdvLIGO IO HAM2-L1, XYZ Local CS for In Vacuum Periscope	1
5	D0900370	AdvLIGO IO HAM2-L1, XYZ Local CS for SOS Assy (SM1,SM2,PMMT1,PMMT2)	1
4	D0900369	AdvLIGO SUS HAM2-L1, XYZ Local CS for HSTS (MC1,MC3,PRM)	1
3	D0900368	AdvLIGO SUS HAM2-L1, XYZ Local CS for HLTS (PR3)	1
2	D0900367	AdvLIGO, SEI HAM2-L1, ISOLATION TABLE TOP LEVEL ASSY.	1
1	D0900366	AdvLIGO VE HAM2-L1, Vacuum Equipment Assembly	1

**LIGO** CALIFORNIA INSTITUTE OF TECHNOLOGY  
MASSACHUSETTS INSTITUTE OF TECHNOLOGY

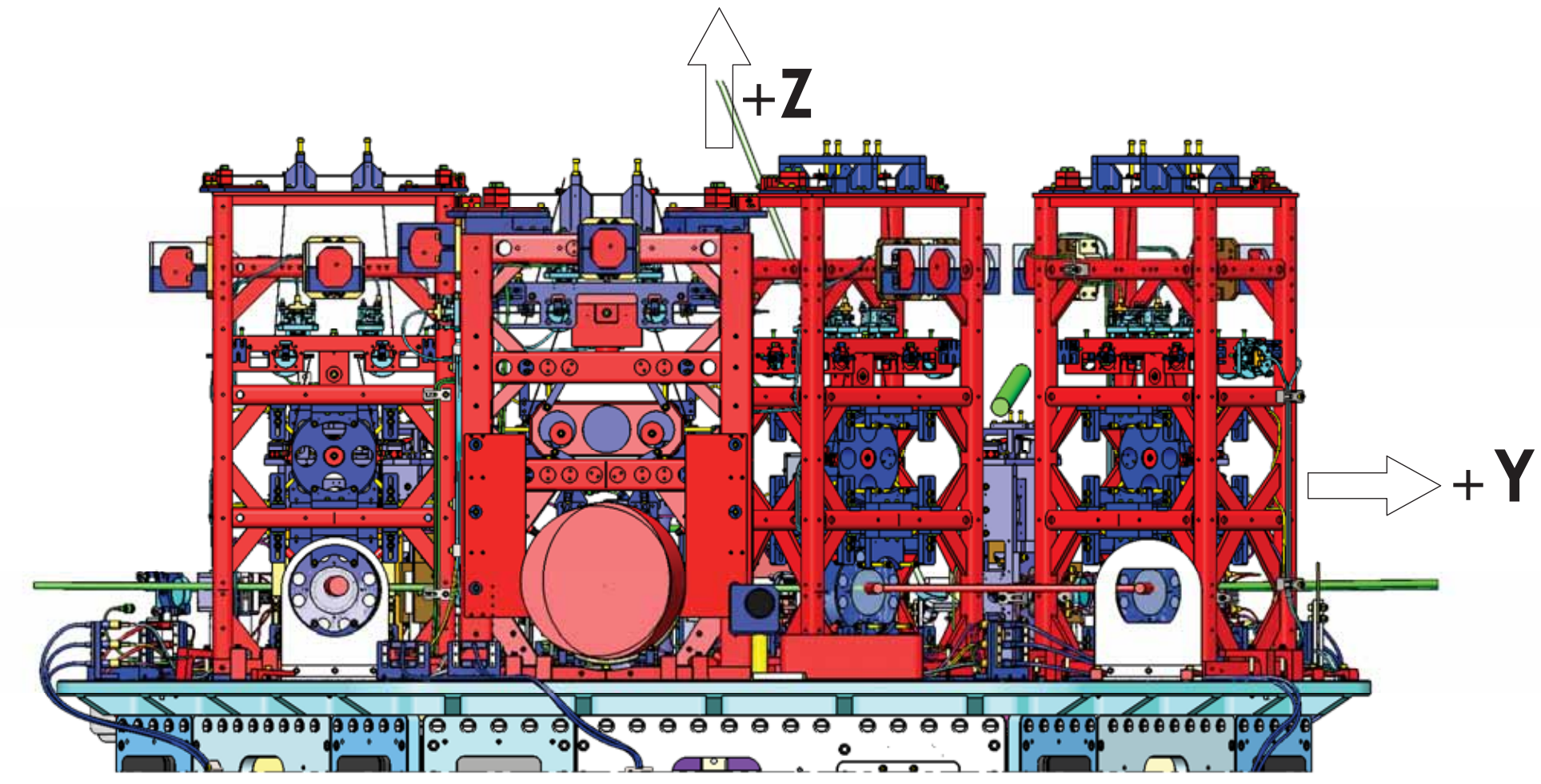
SIZE DWG. NO. **D0900365** REV. **v11**

SCALE: 1:5 PROJECTION: SHEET 2 OF 6

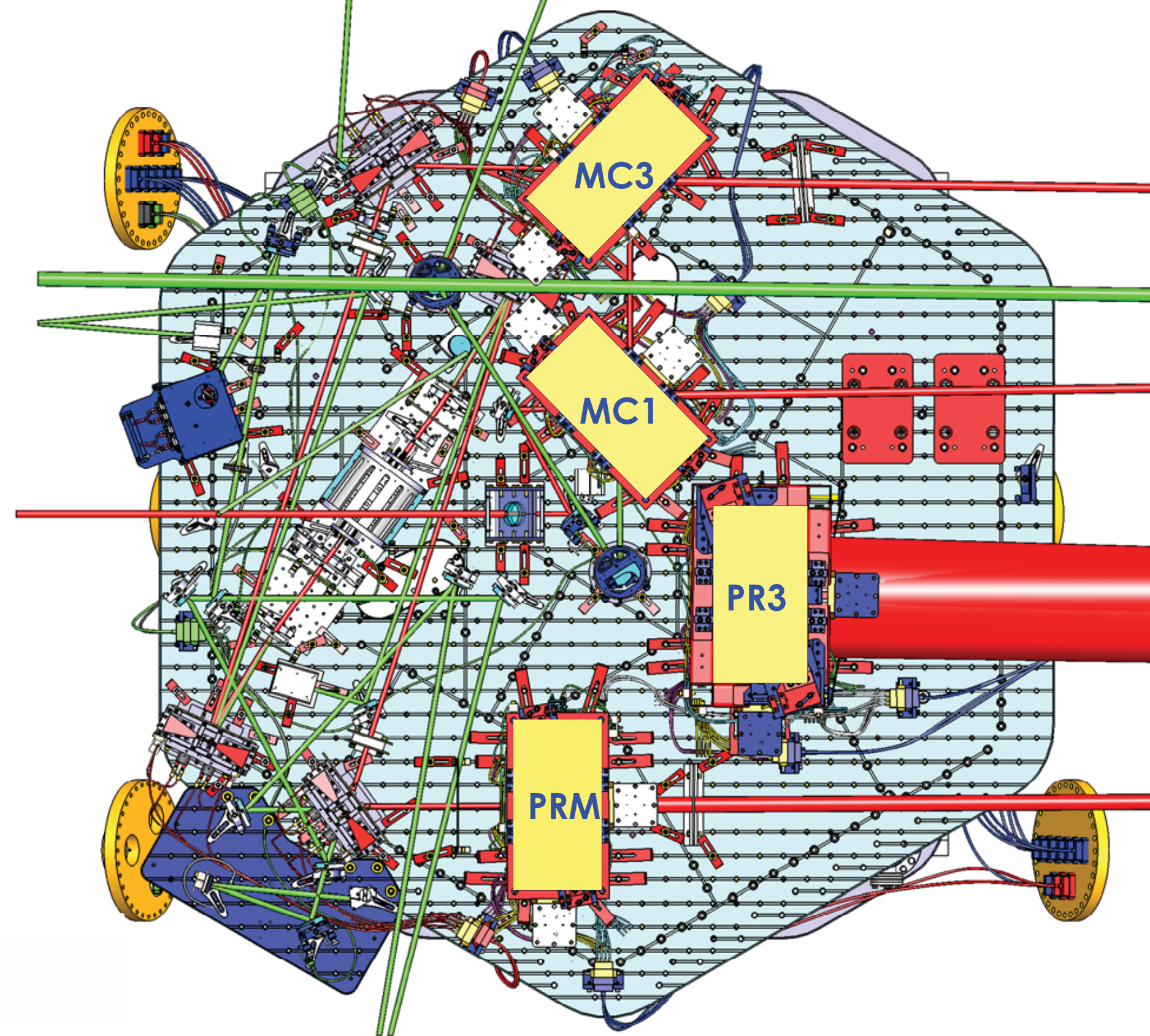
D0900365 AdvLIGO Systems: HAM2-L1 Top Level Chamber Assembly: ALL PART PDM REV: X-099, DRAWING PDM REV: X-014



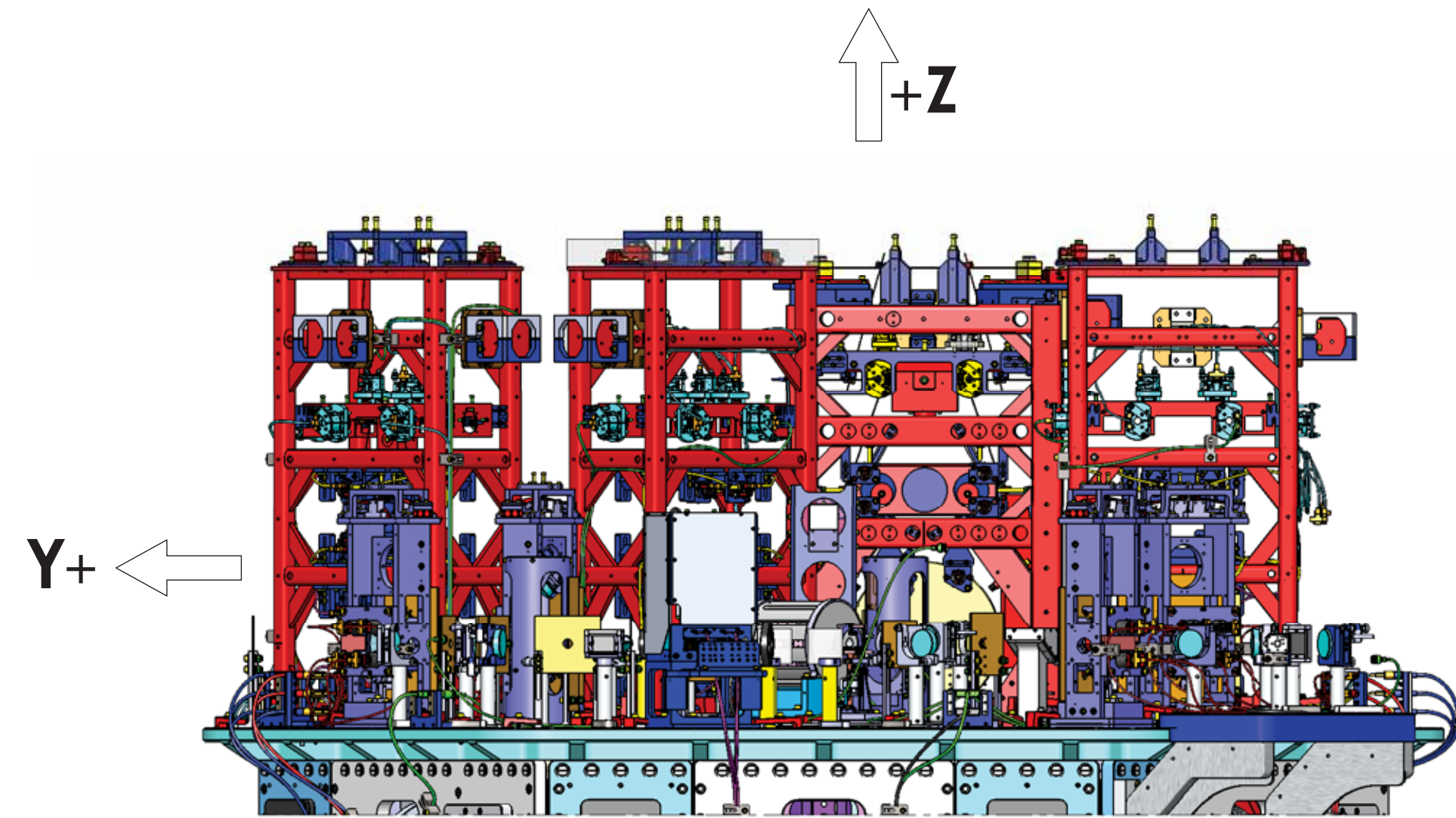
REAR VIEW  
(ROTATED 180 DEGREES CCW)



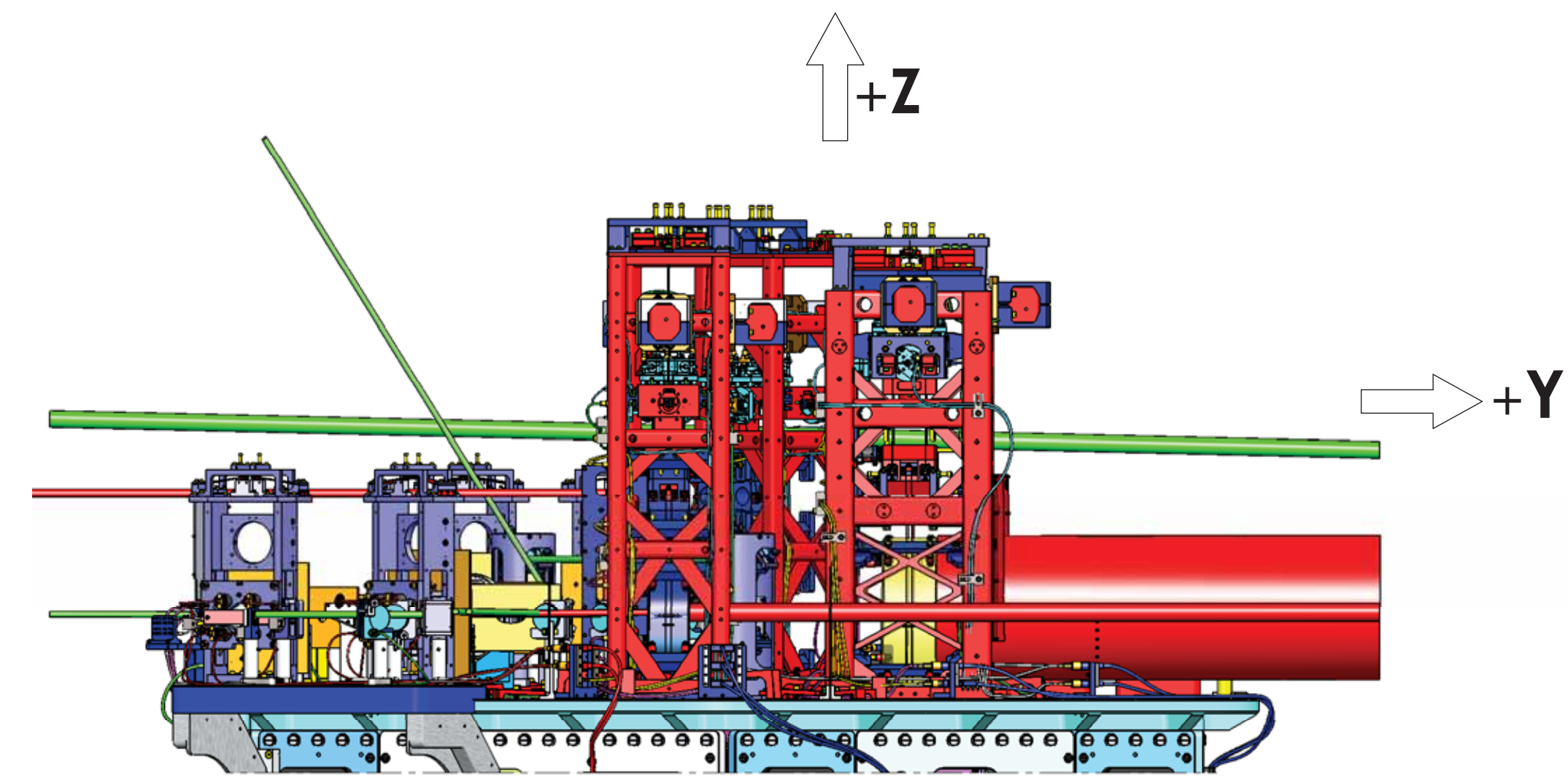
RIGHT SIDE VIEW  
(ROTATED 180 DEGREES CCW)



TOP VIEW



LEFT SIDE VIEW  
(ROTATED 90 DEGREES CCW)

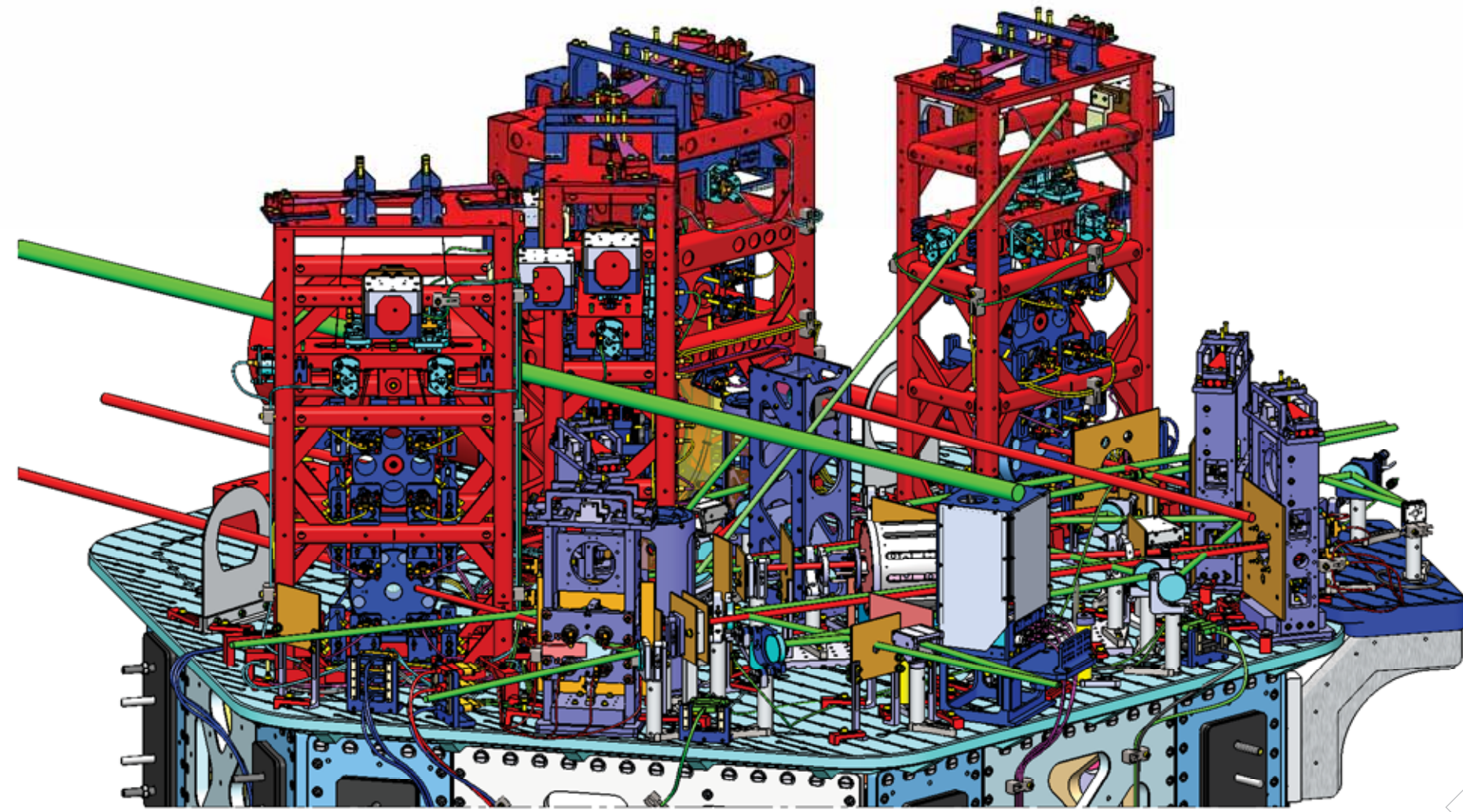


FRONT VIEW

# LASER BEAMS - ORTHO VIEWS

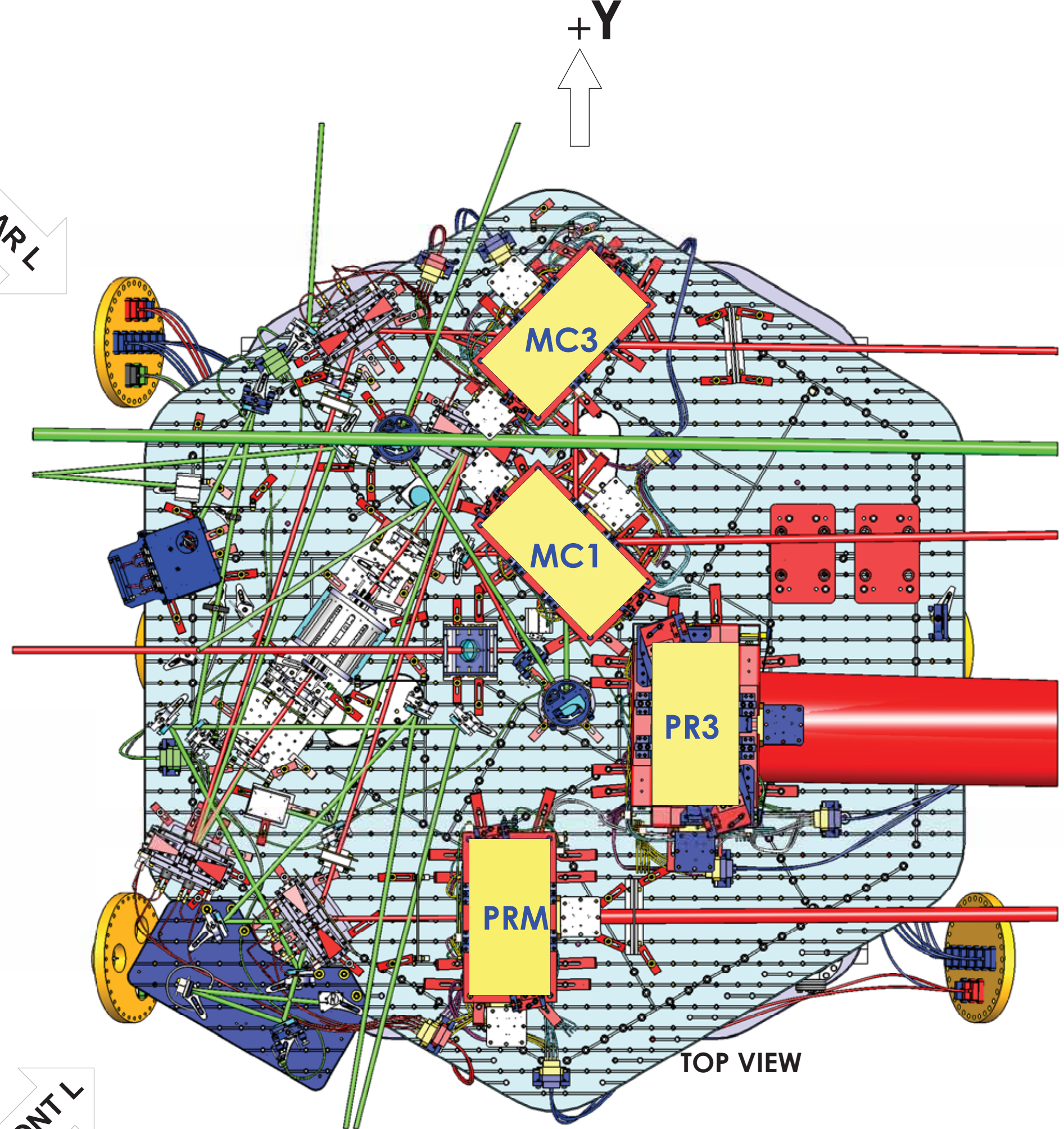
CALIFORNIA INSTITUTE OF TECHNOLOGY MASSACHUSETTS INSTITUTE OF TECHNOLOGY		
SIZE	DWG. NO.	REV.
D	D0900365	v11
SCALE: 1:8	PROJECTION:	SHEET 3 OF 6

DDP00365-Asst LIGO Systems: HAM2-L1 Top Level Chamber Assembly: ALL PART PDM REV: X-079 DRAWING PDM REV: X-014



ISO REAR - LEFT

REAR L

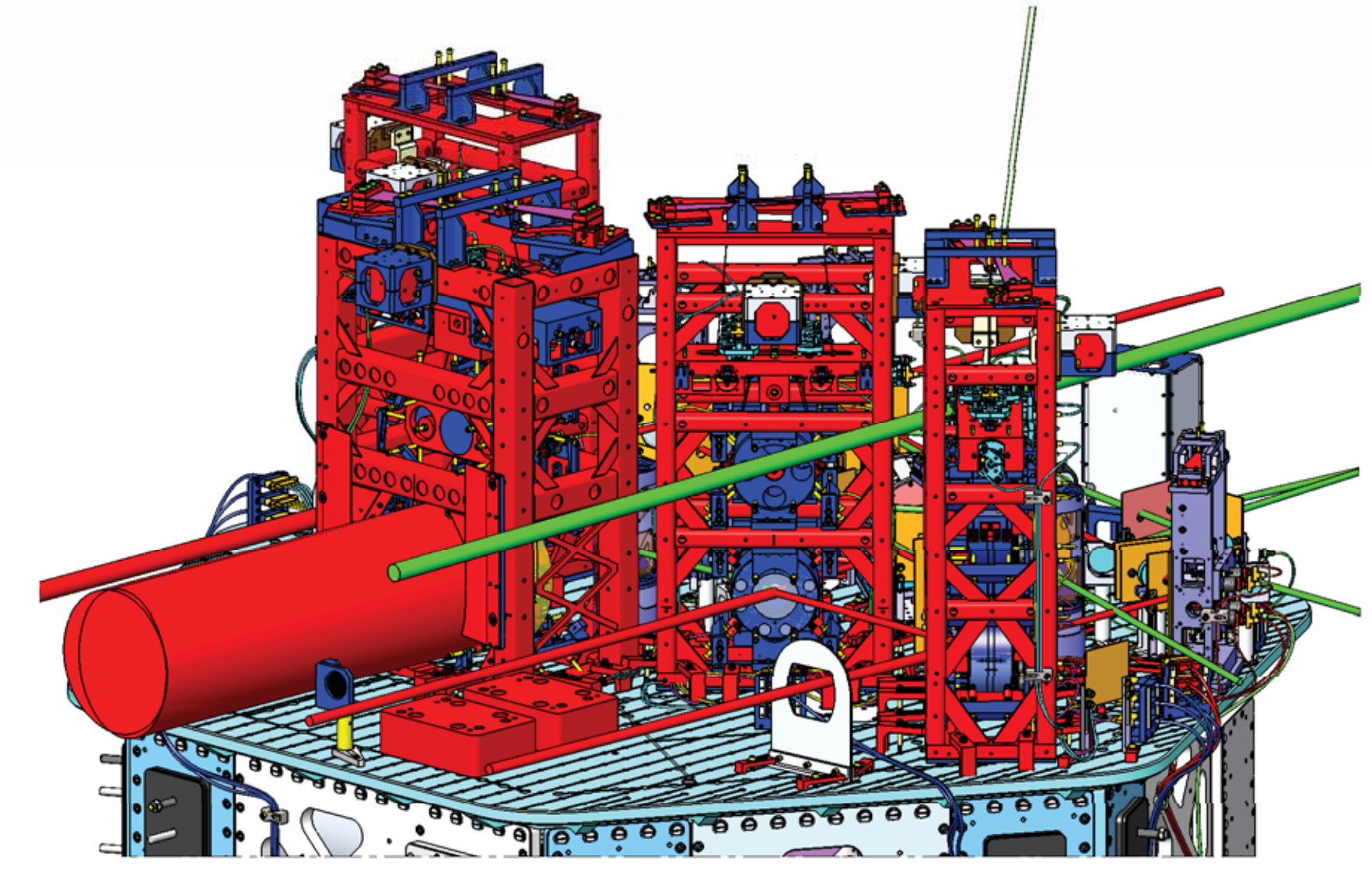


TOP VIEW

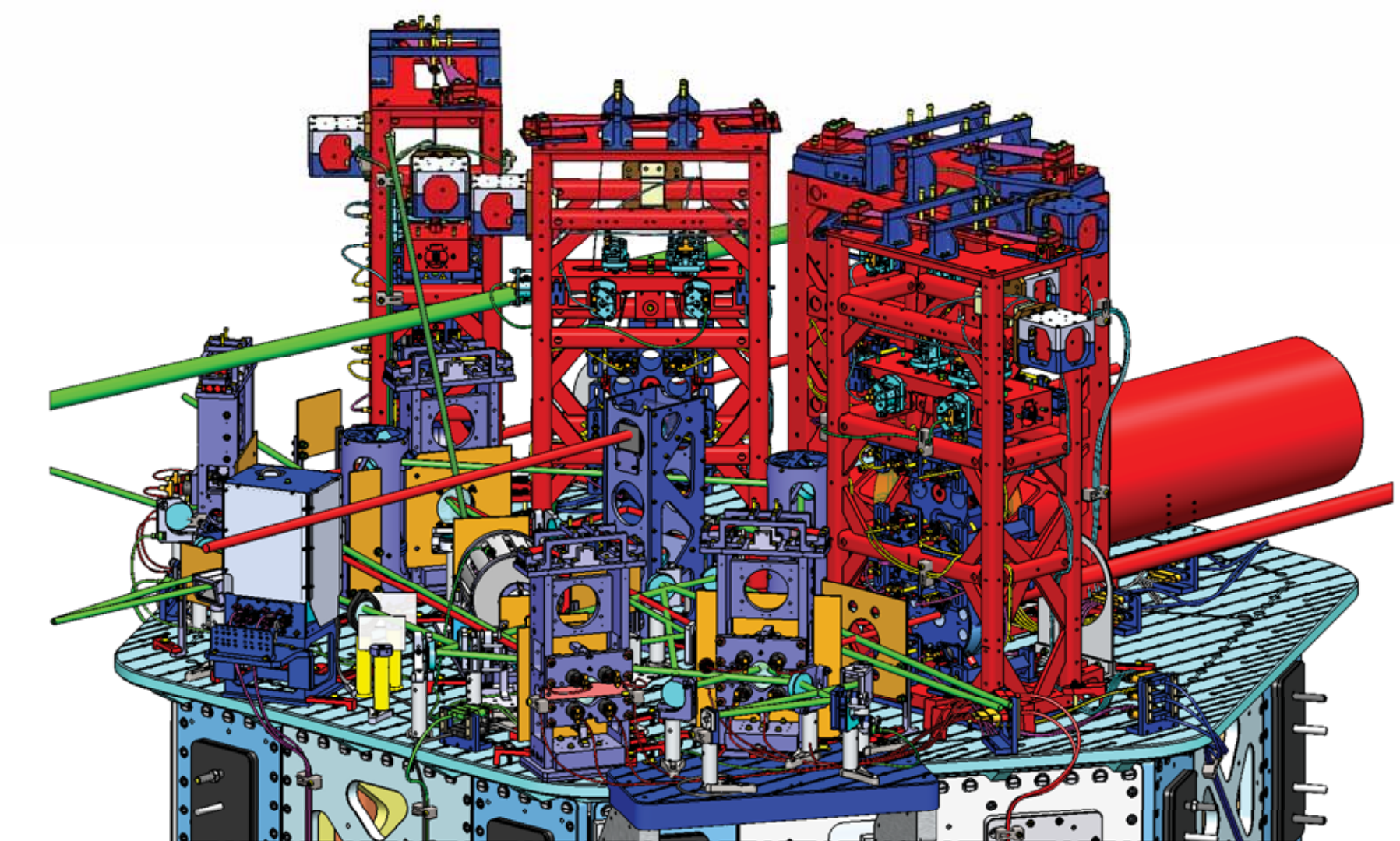
+Y

+X

REAR R



ISO REAR - RIGHT

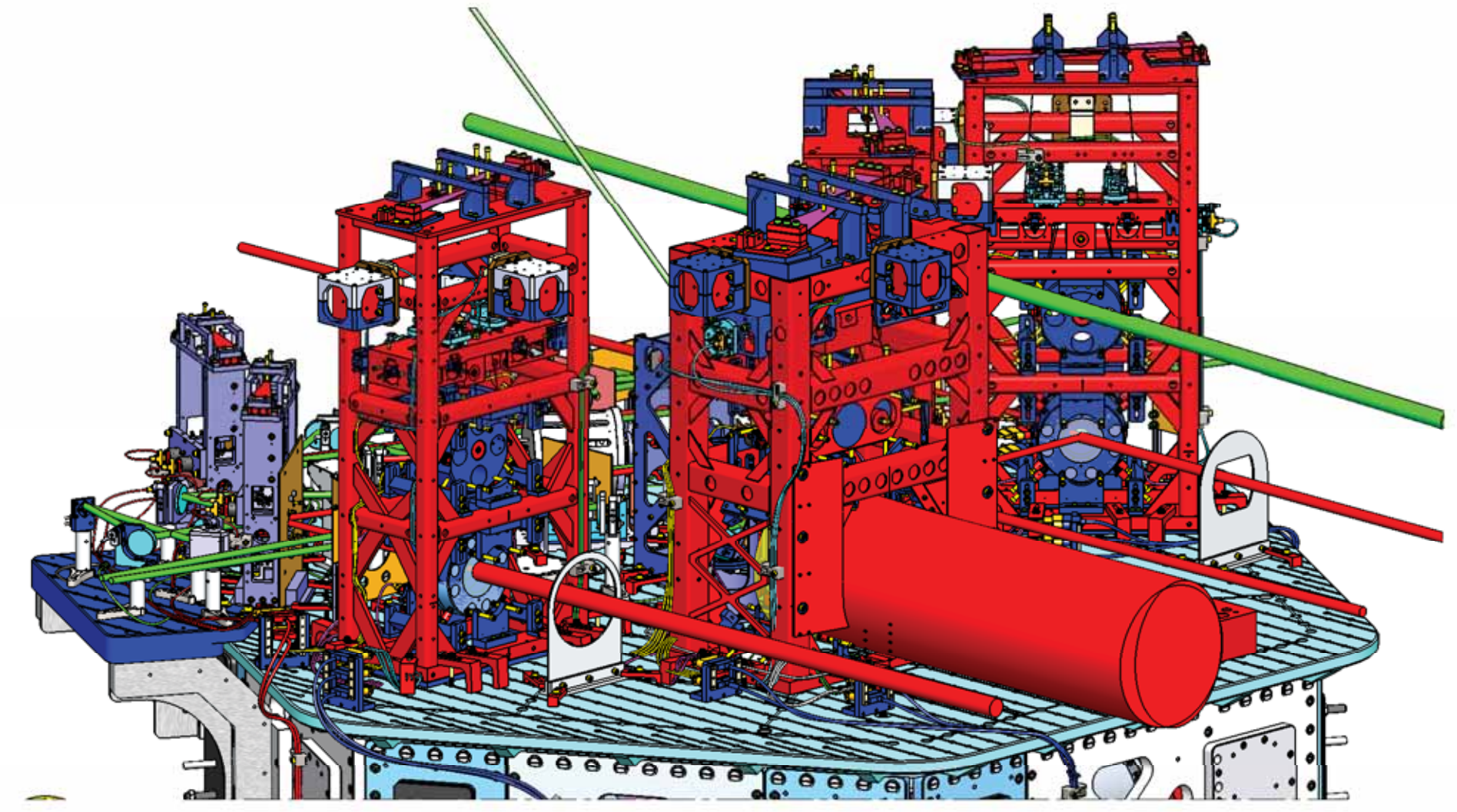


ISO FRONT - LEFT

FRONT L

FRONT R

HAM 3



ISO FRONT - RIGHT

# LASER BEAMS - ISO VIEWS

CALIFORNIA INSTITUTE OF TECHNOLOGY MASSACHUSETTS INSTITUTE OF TECHNOLOGY		REV.
SIZE	DWG. NO.	REV.
D	D0900365	v11
SCALE: 1:8	PROJECTION:	SHEET 4 OF 6

DDP0365-Asst LIGO Systems: HAM2-L1 Top Level Chamber Assembly: ALL PART PDM REV: X-079 DRAWING PDM REV: X-014

8

7

6

5

4

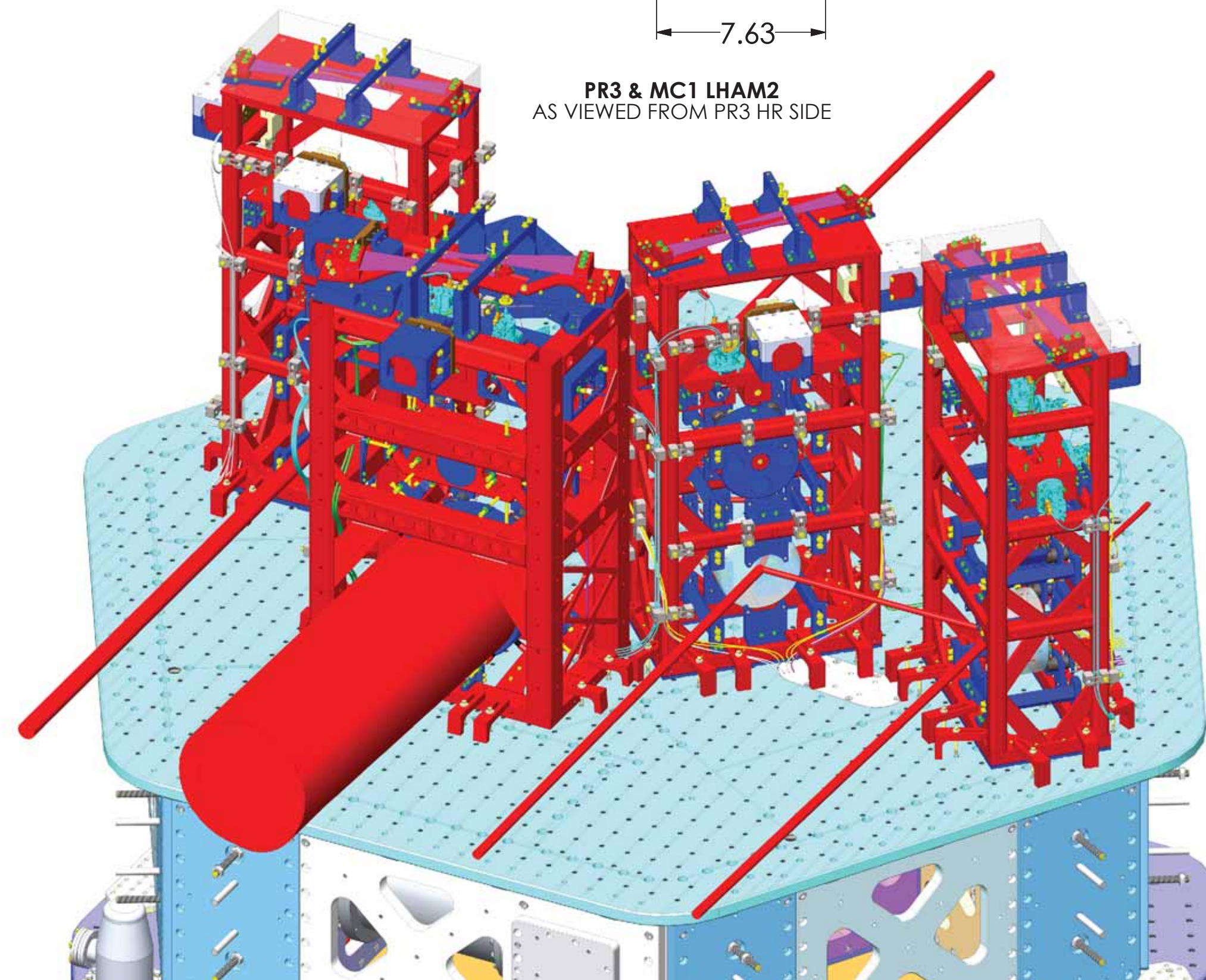
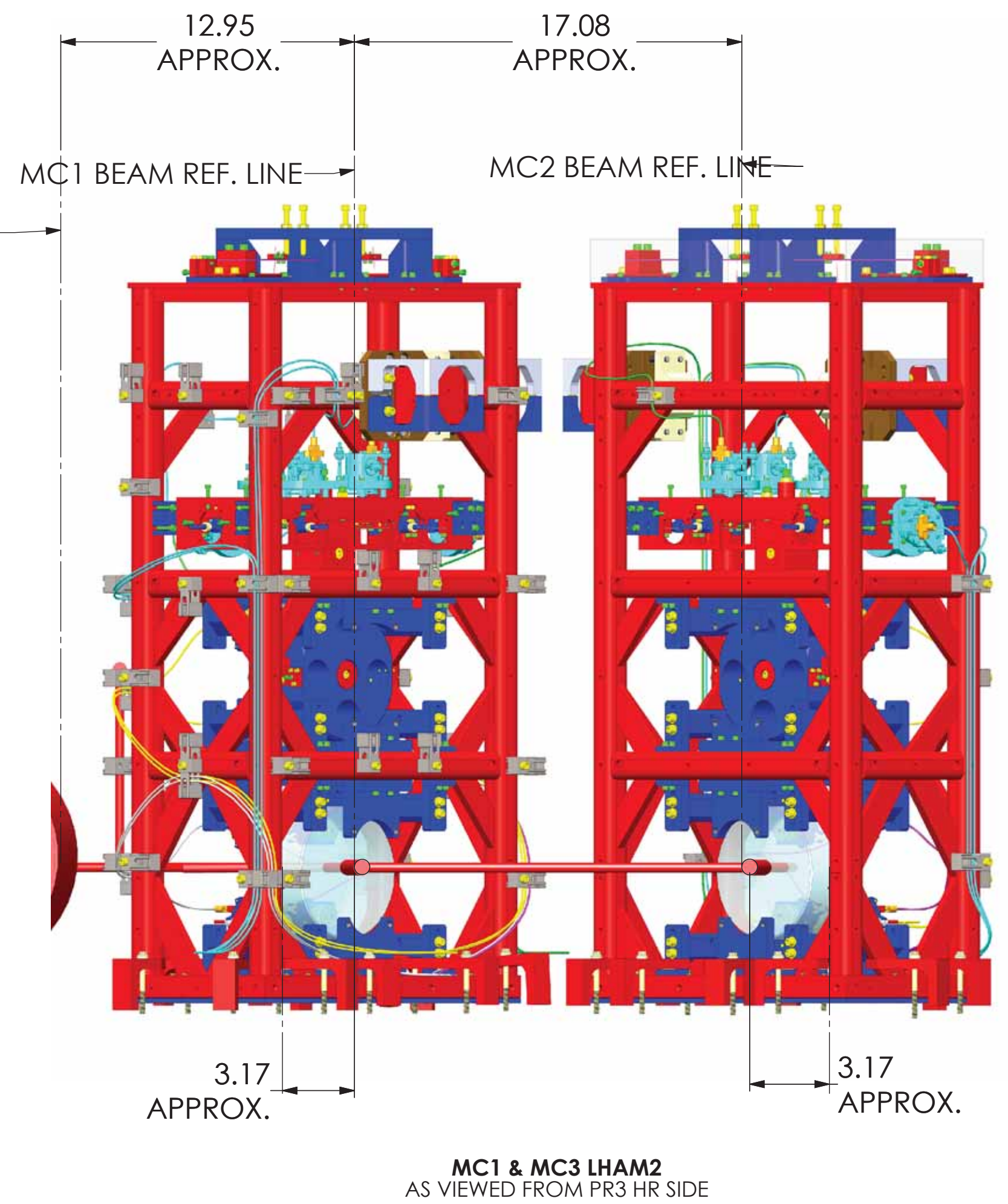
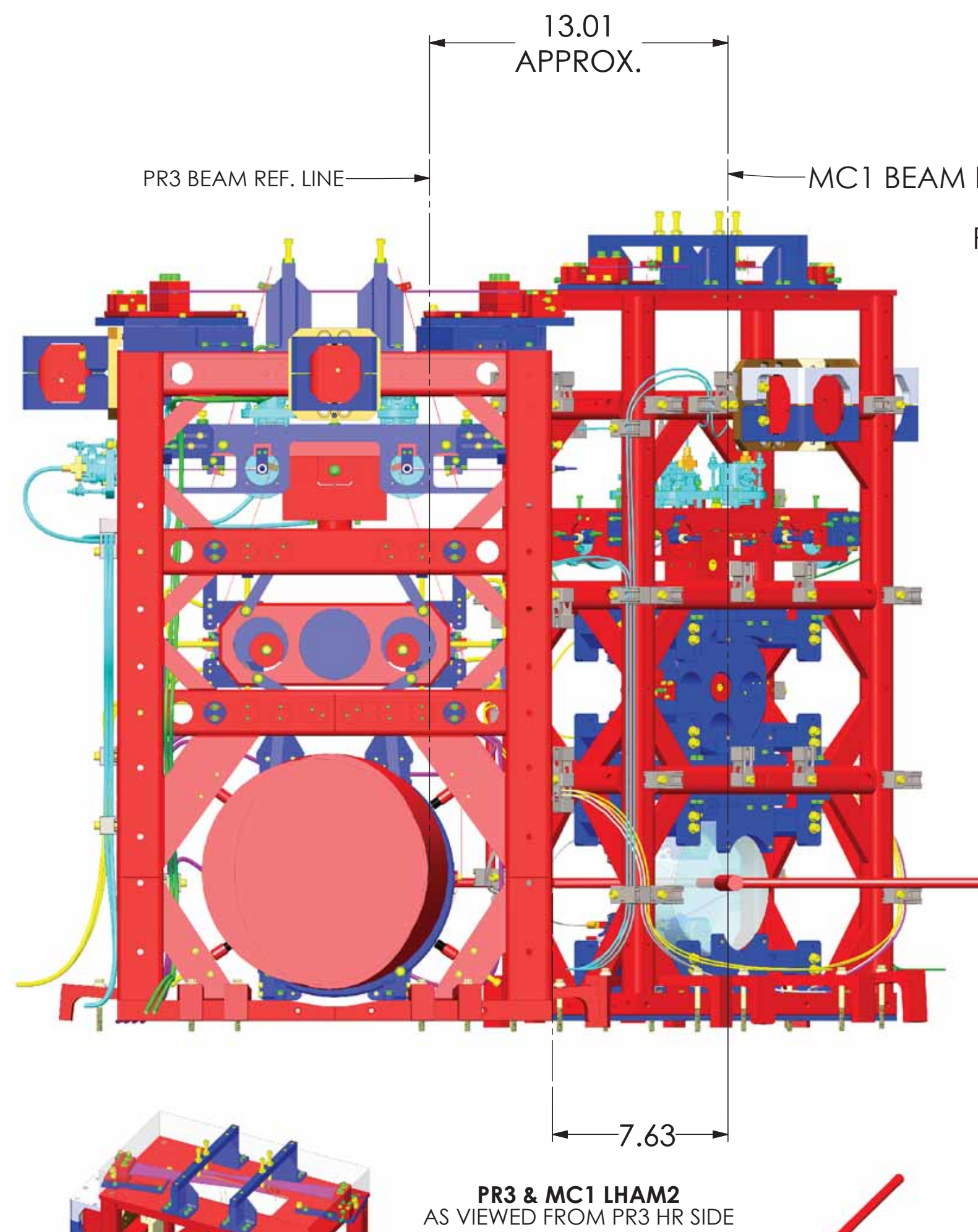
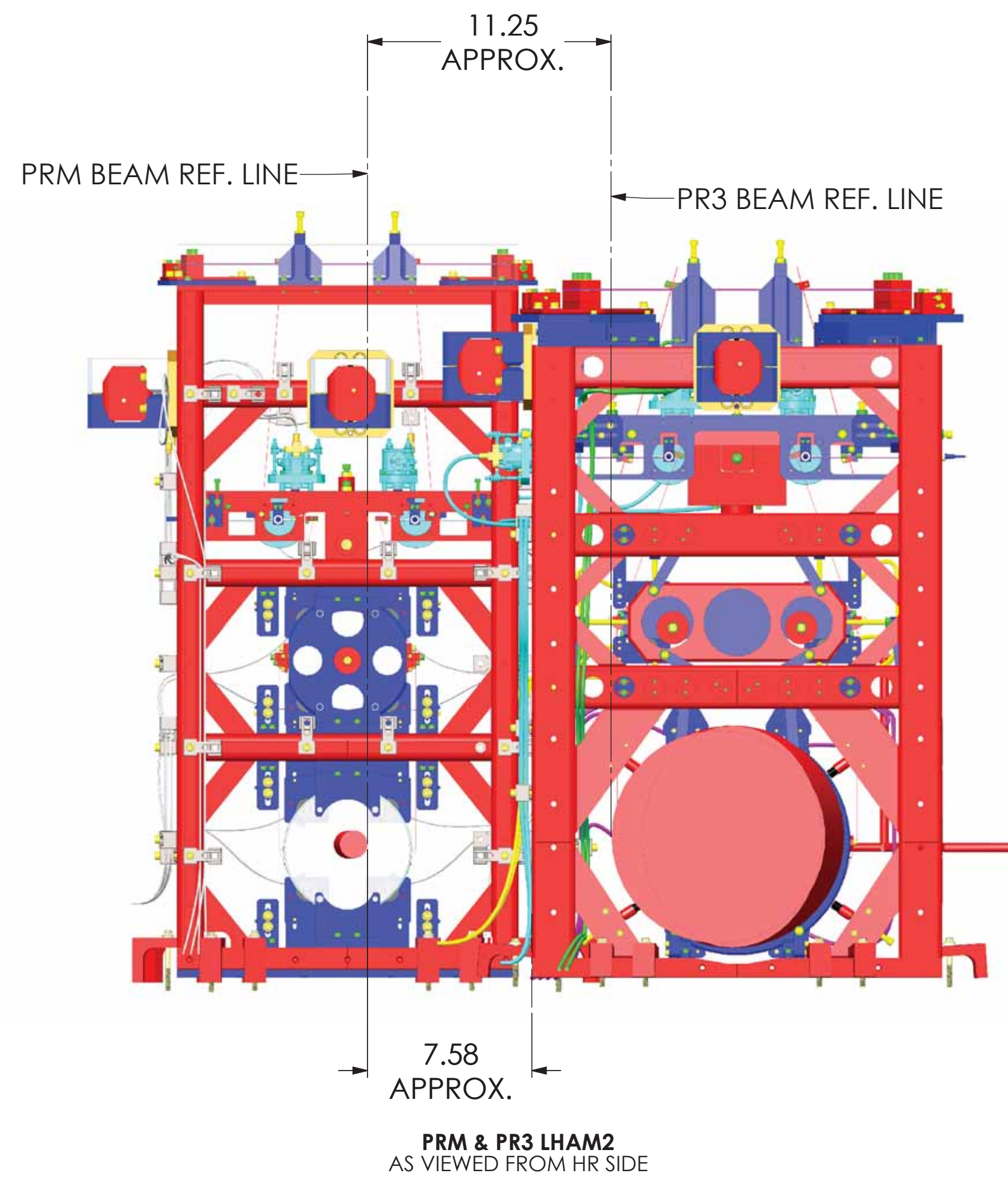
3

2

1

H  
G  
F  
E  
D  
C  
B  
A

H  
G  
F  
E  
D  
C  
B  
A



# LASER BEAMS HR SIDE CLEARANCES

<b>LIGO</b> CALIFORNIA INSTITUTE OF TECHNOLOGY MASSACHUSETTS INSTITUTE OF TECHNOLOGY	
SIZE DWG. NO.	REV.
D D0900365	v11
SCALE: NTS	PROJECTION:
SHEET 5 OF 6	

8

7

6

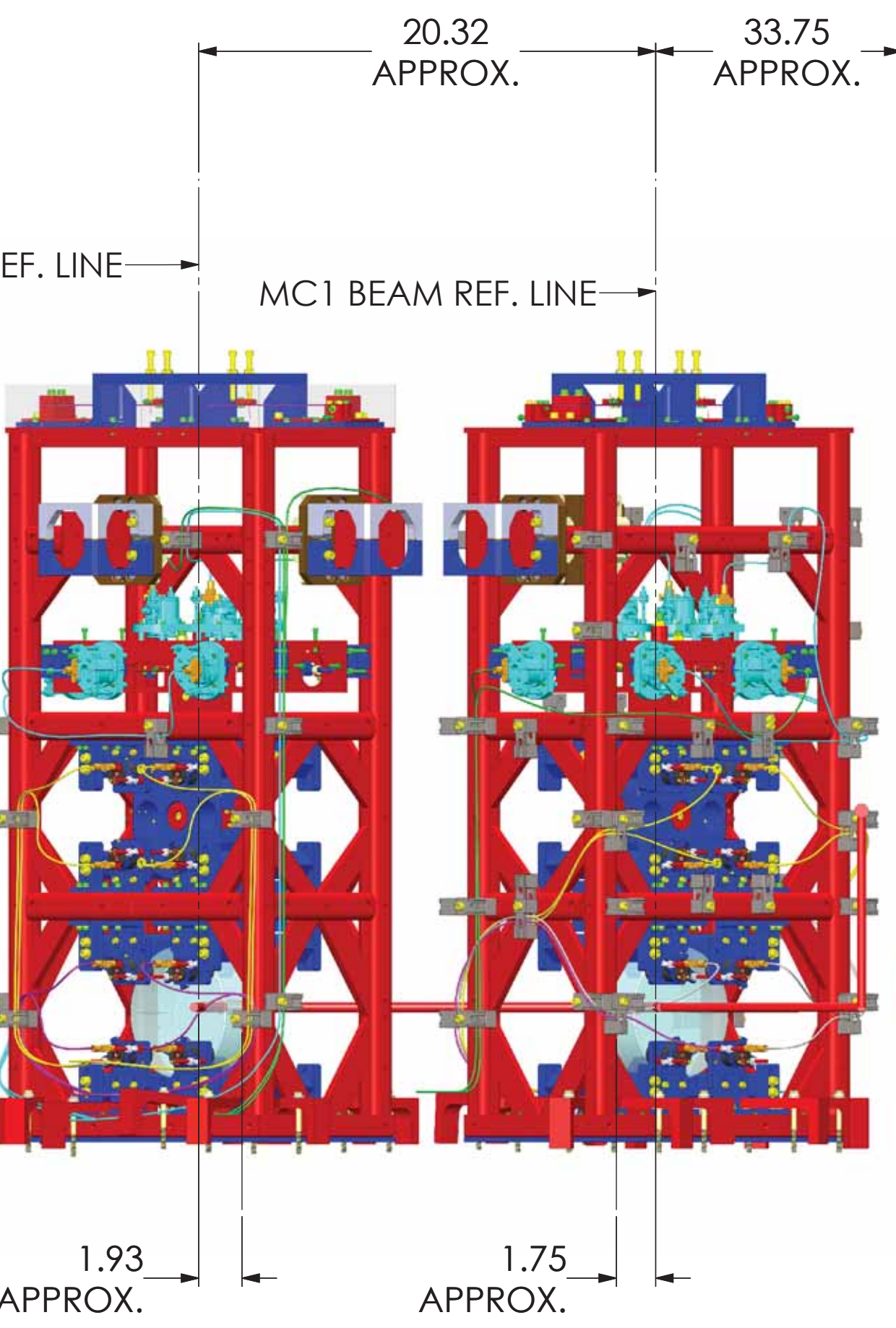
5

4

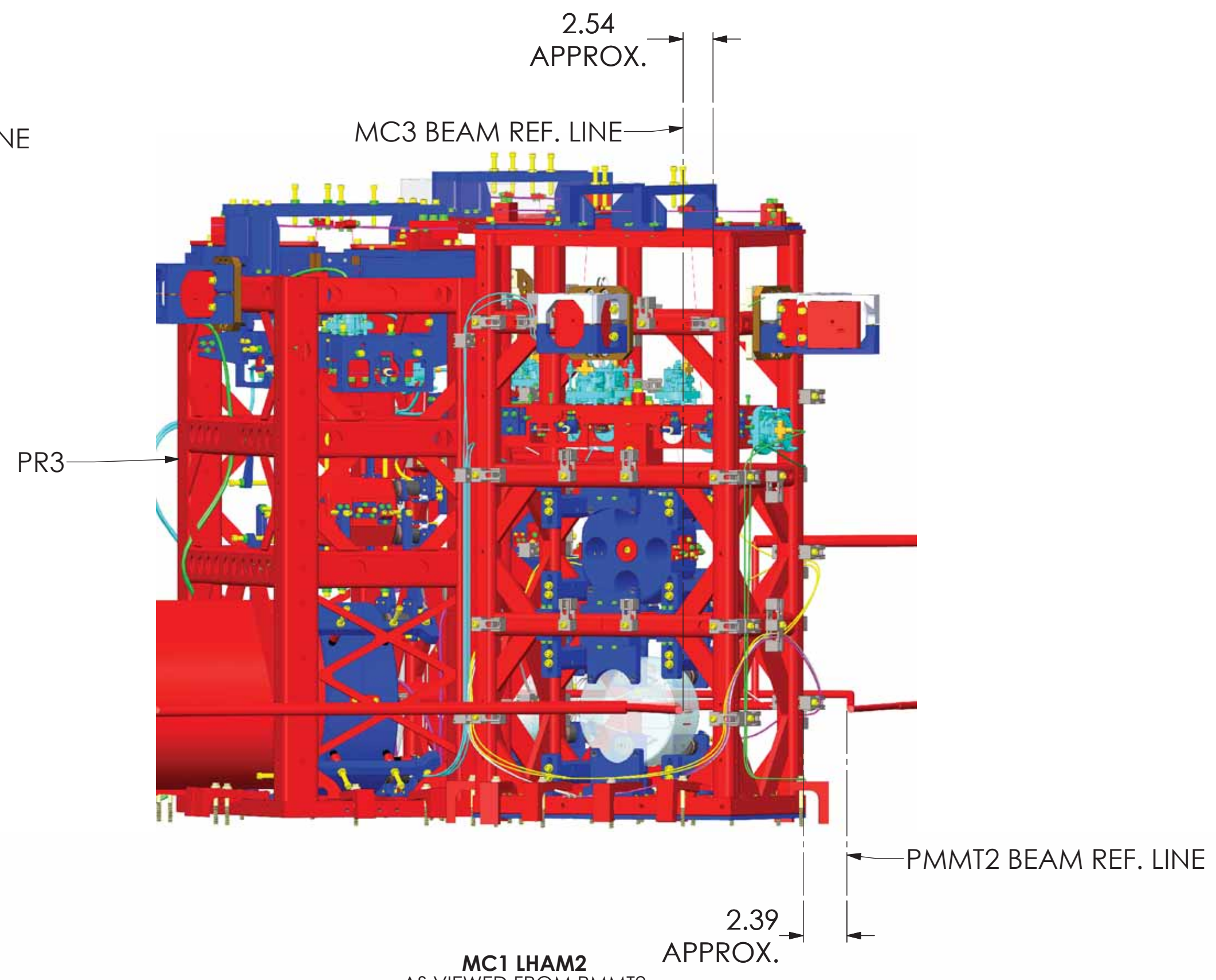
3

2

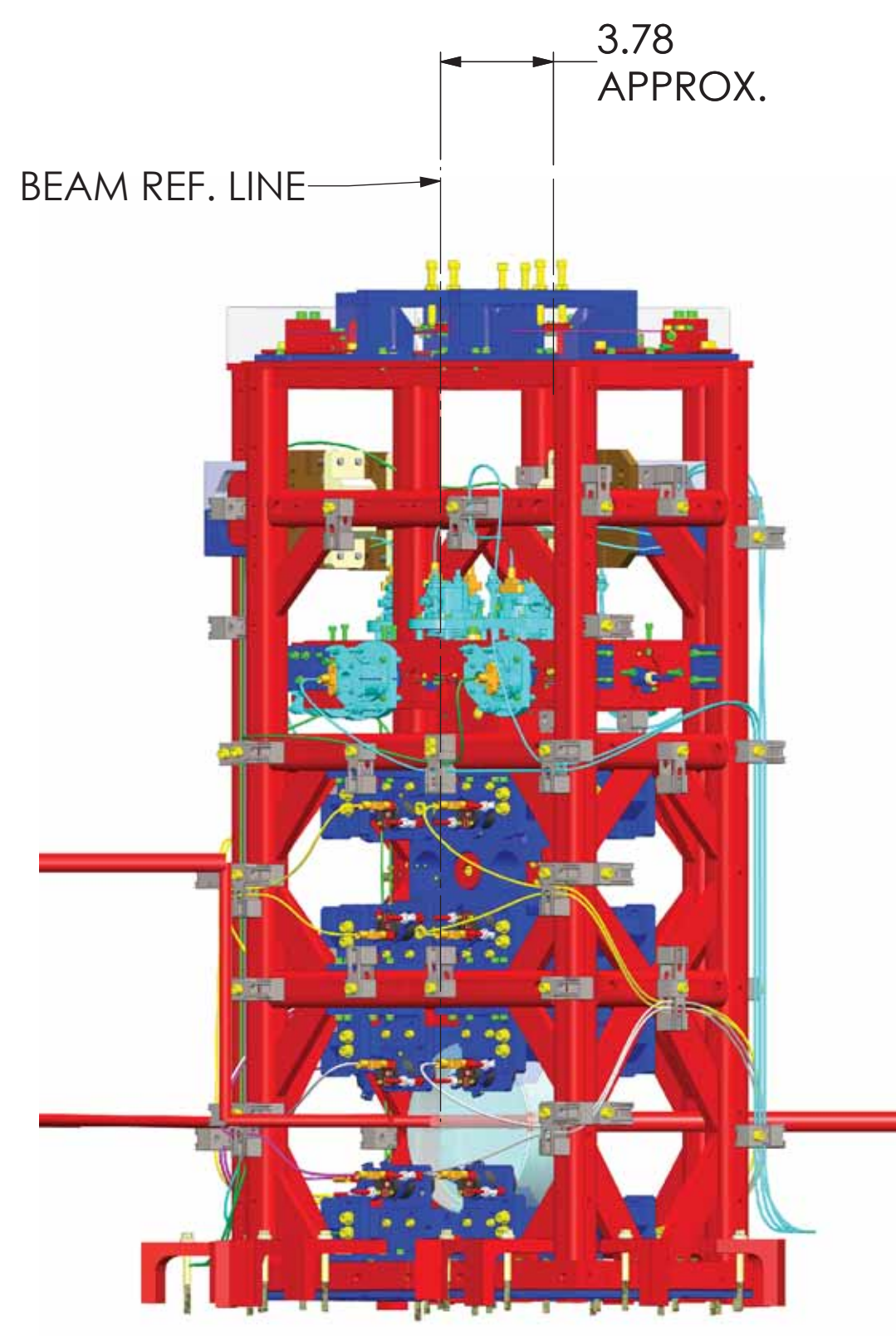
1



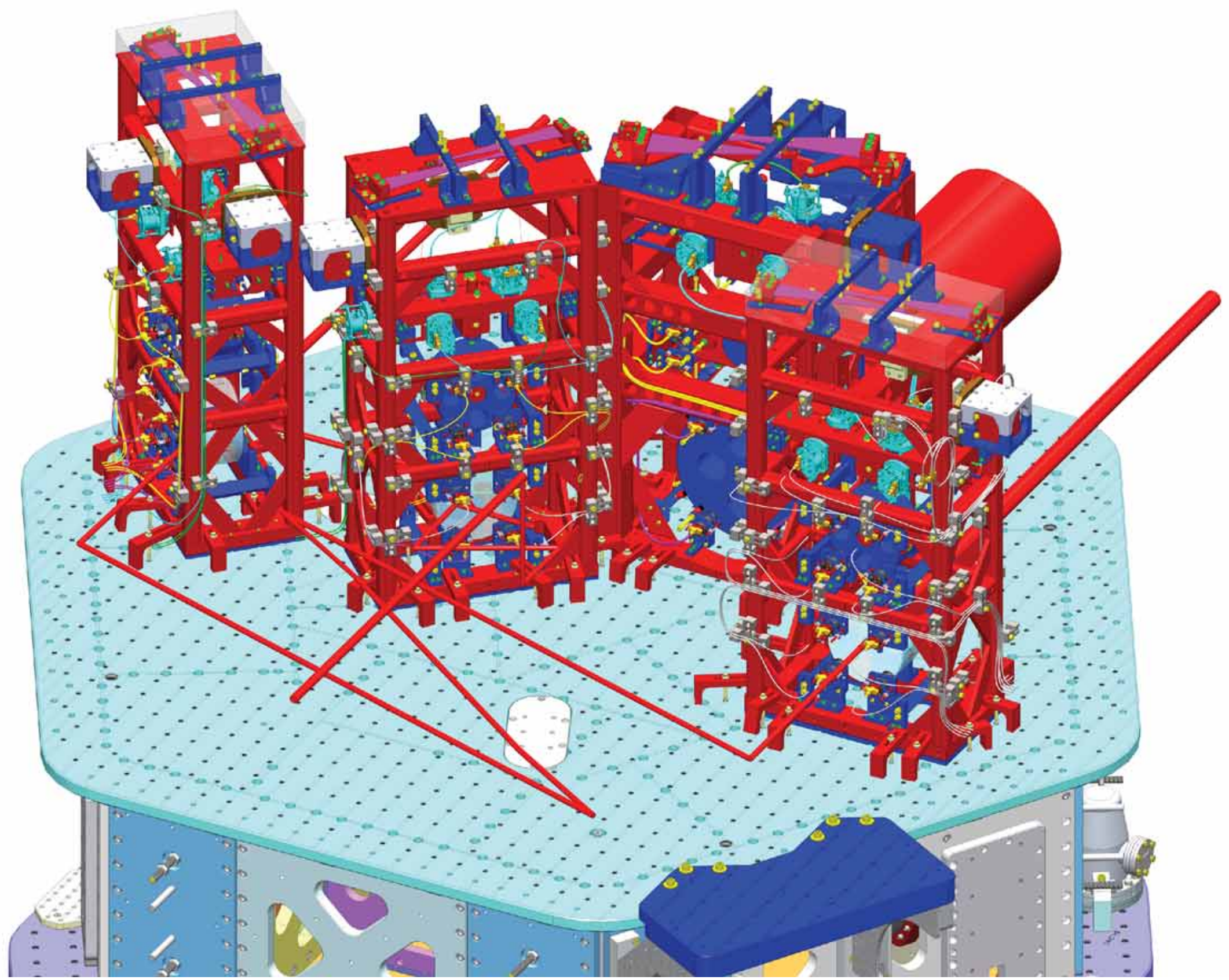
MC3 & MC1 LHAM2  
AS VIEWED FROM AR SIDE



MC1 LHAM2  
AS VIEWED FROM PMMT2



MC1 LHAM2  
ISO VIEW, REAR RIGHT



ISO VIEW, FRONT LEFT

# LASER BEAMS AR SIDE CLEARANCES

CALIFORNIA INSTITUTE OF TECHNOLOGY MASSACHUSETTS INSTITUTE OF TECHNOLOGY	
SIZE DWG. NO.	REV.
D D0900365	v11
SCALE: NTS	PROJECTION:
	SHEET 6 OF 6

D:\D0900365\_A04\LIGO Systems\_HAM2\L1 Top Level Chamber Assembly\_All Part PDM REV.: DRAWING PDM REV: X016