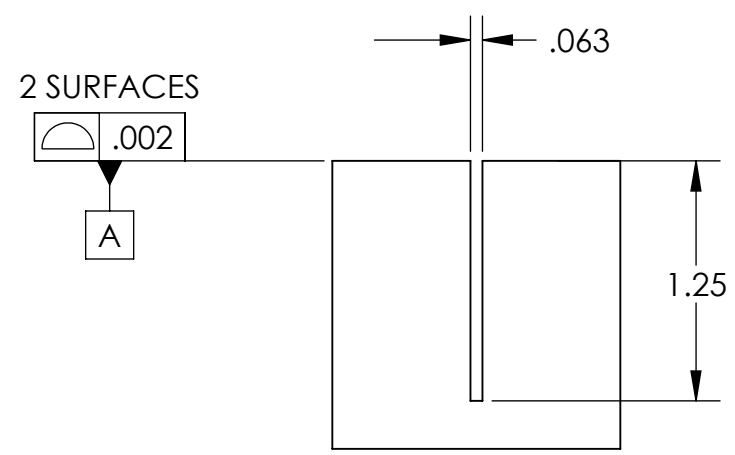
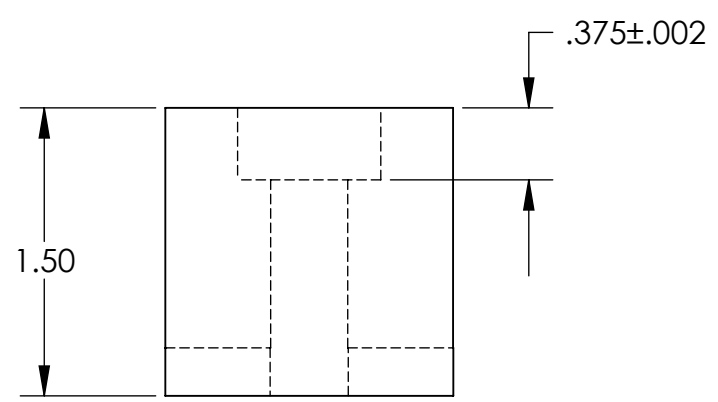
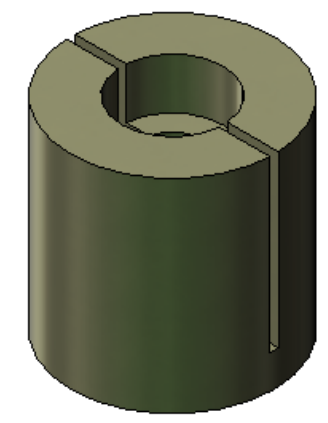
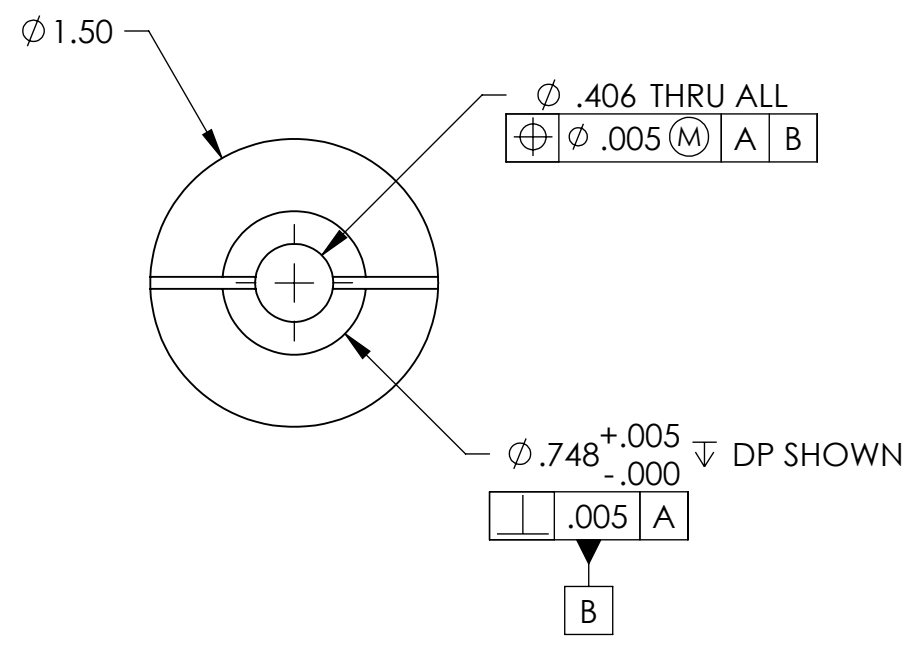


REVISION HISTORY				
REV	DATE	ECO	APPROVAL	DESCRIPTION
V1 / A	24 Sep 2007	1072	B. Schiffner	Release for Enhanced LIGO.
V2	24 Apr 2009		A. Stein	Release for Advanced LIGO.



MANUFACTURING NOTES:

- 1) MACHINE ALL SURFACES TO REMOVE OXIDES AND MILL FINISH. ABRASIVE REMOVAL TECHNIQUES (OTHER THAN DRESSED BLANCHARD GRINDING) ARE NOT ACCEPTABLE.
- 2) ALL MACHINING FLUIDS MUST BE WATER SOLUBLE AND FREE OF SULFUR, CHLORINE, AND SILICONE, SUCH AS CINCINNATI MILACRON CIMTECH 410.
- 3) THOROUGHLY CLEAN PART TO REMOVE ALL OIL, GREASE, DIRT, AND CHIPS.

POST-MANUFACTURING NOTES:

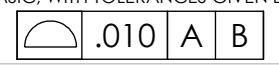
P1) REFER TO LIGO DWG# D071471.

UNLESS OTHERWISE SPECIFIED:

DIMENSIONS ARE IN INCHES
 DECIMAL TOLERANCES:
 .XX ±.015 .XXX ±.005
 ANG TOL: ± 1° SURFACE ROUGHNESS: 63

REMOVE ALL SHARP EDGES.
 LEAVE .005 X 45° MIN CHAMFER,
 OR .005 MIN RADIUS.

THIS PRINT & THE EMBEDDED CAD
 MODEL ARE THE DOCUMENTATION OF
 RECORD. UNLESS OTHERWISE SPECIFIED,
 ALL DIMENSIONS IN THE MODEL ARE
 BASIC, WITH TOLERANCES GIVEN BY:



APPROVALS	DATE
ENGINEERING (HPD): B. Schiffner	9/24/2007
QUALITY (HPD): C. Danaher	9/24/2007
MATERIAL:	6061-T6 Al
FINISH:	None
MASS:	0.22 lbs

ORIGINAL DESIGN BY:		High Precision Devices		MODIFIED BY:	
		1668 Valtec Lane, Suite C, Boulder, Colorado 80301		LIGO	
		Phone: (303) 447-2558 Fax: (303) 447-2548 Web Site: www.hpd-online.com			
DESCRIPTION:		GS-13 Weld Nut Heat Sink			
P/N:		D071322	CONFIG: -		
CAD FILE NAME:		D071322_GS-13_Weld_Nut_Heat_Sink			
PROJECT:		HAM ISI, Advanced LIGO			
SIZE	SCALE: 1:1	DRAWN BY: Bryan Schiffner (HPD)		REV	
B	SHEET 1 OF 1	DATE PRINTED: 4/24/2009		V2	