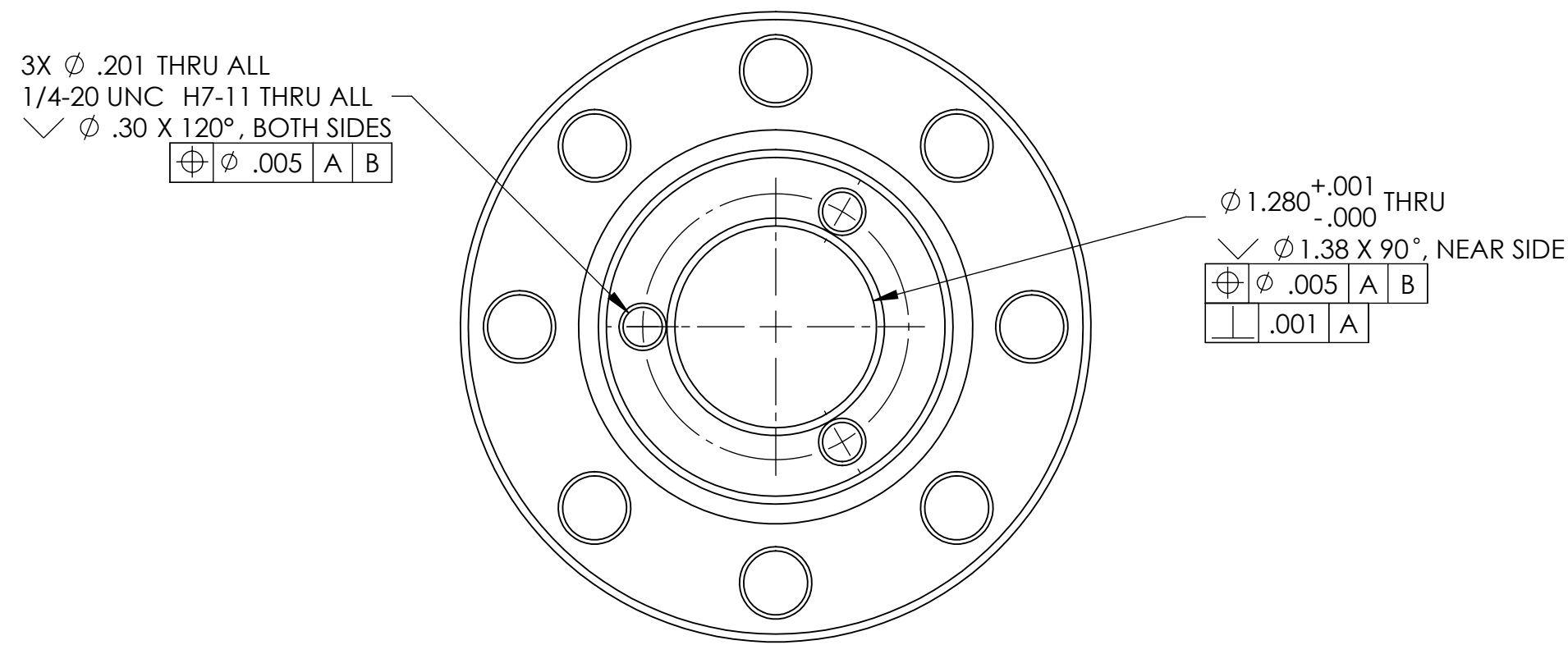
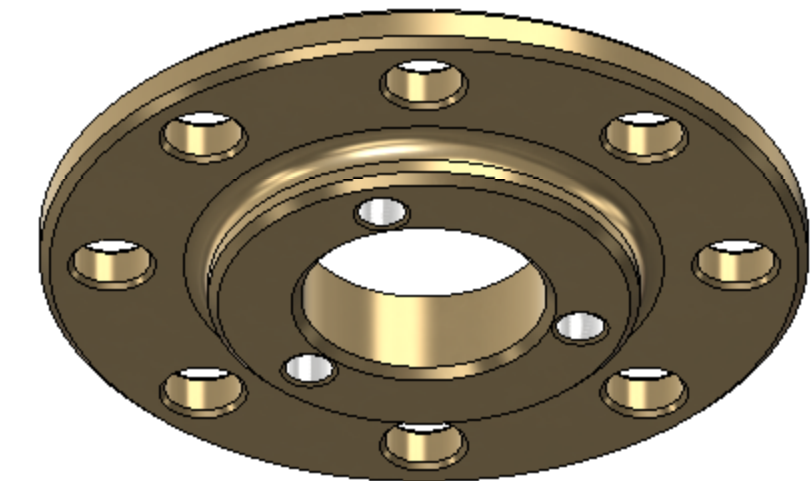
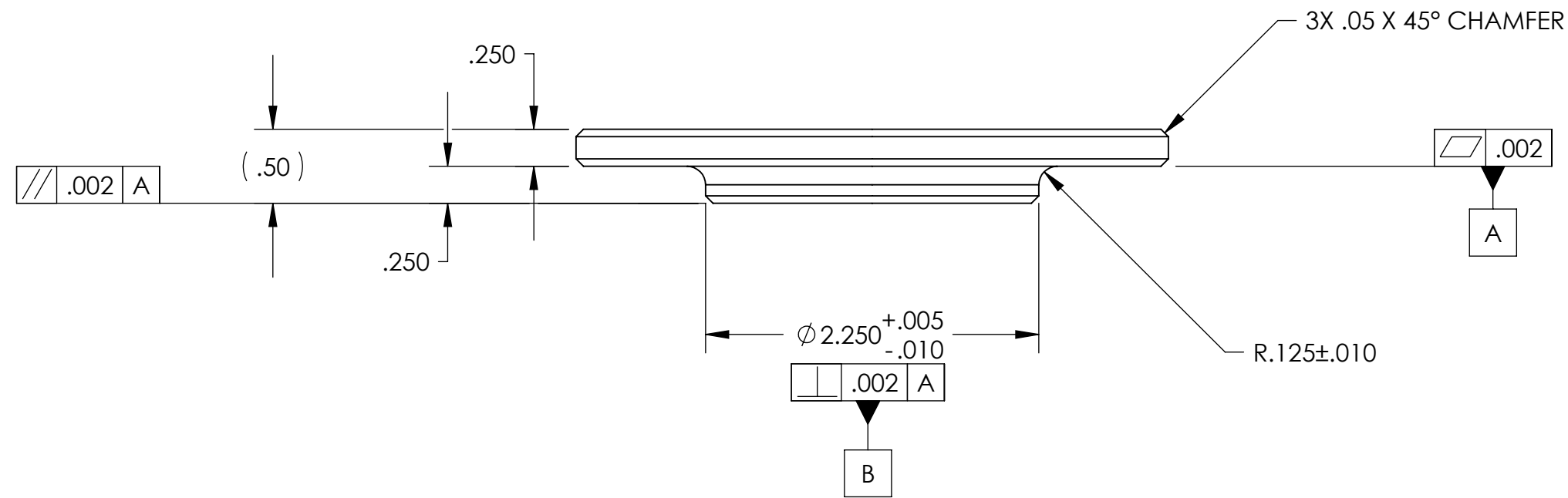
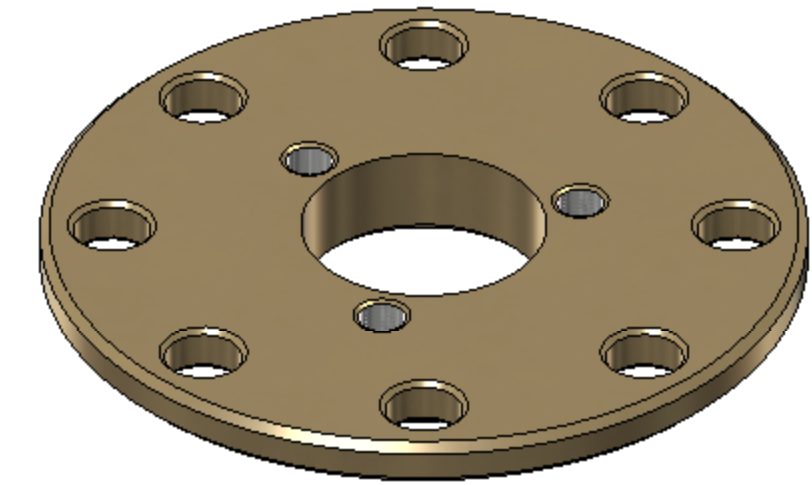
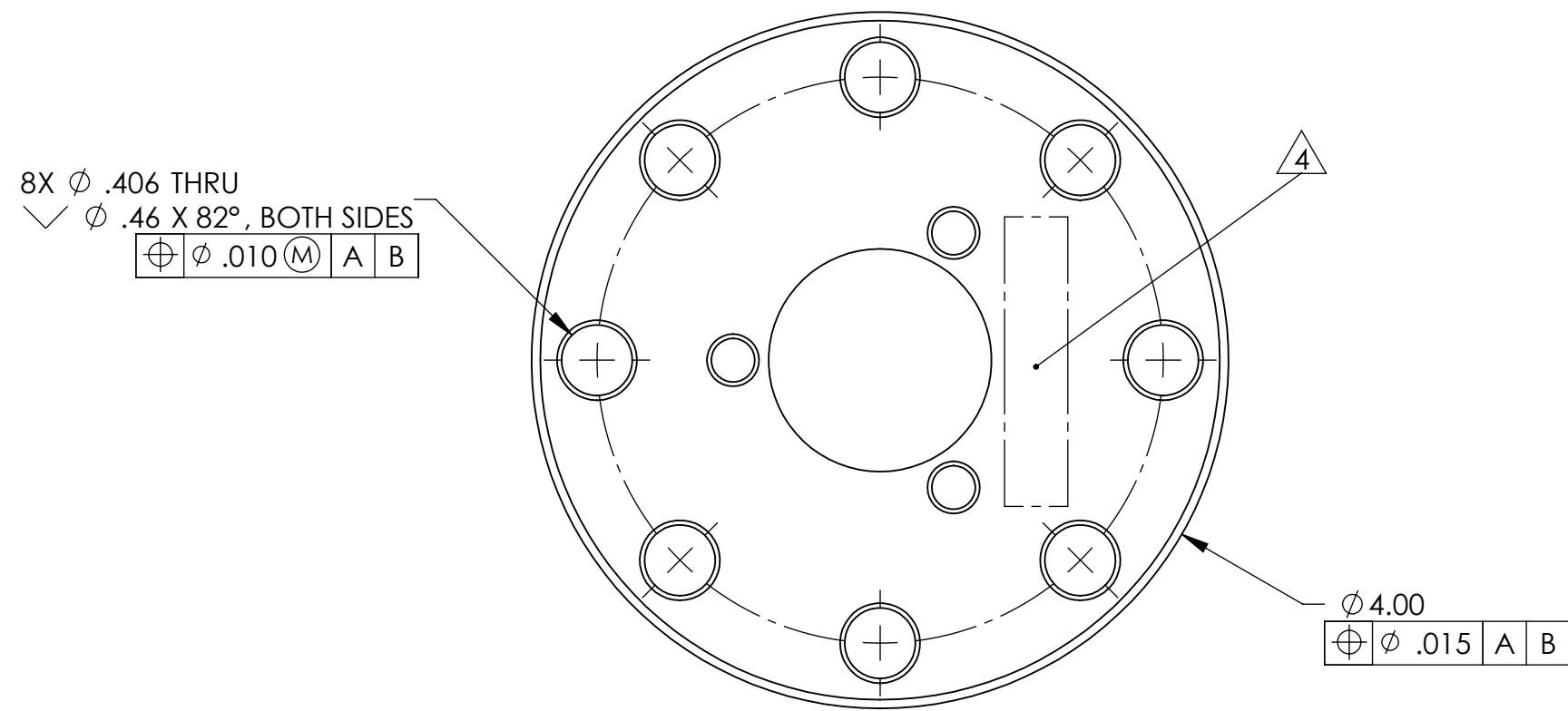


REVISION HISTORY				
REV	DATE	ECO	APPROVAL	DESCRIPTION
V1 / C	31 Jul 2007	1070	B. Schiffner	Release for Enhanced LIGO.
V2	23 Apr 2009		A. Stein	Release for Advanced LIGO. Added c/sinks and chamfers.



MANUFACTURING NOTES:

- 1) MACHINE ALL SURFACES TO REMOVE OXIDES AND MILL FINISH. ABRASIVE REMOVAL TECHNIQUES (OTHER THAN DRESSED BLANCHARD GRINDING) ARE NOT ACCEPTABLE.
- 2) ALL MACHINING FLUIDS MUST BE WATER SOLUBLE AND FREE OF SULFUR, CHLORINE, AND SILICONE, SUCH AS CINCINNATI MILACRON CIMTECH 410.
- 3) THOROUGHLY CLEAN PART TO REMOVE ALL OIL, GREASE, DIRT, AND CHIPS.
- 4) WHERE INDICATED, MECHANICALLY SCRIBE, STAMP, OR ENGRAVE THE FOLLOWING INFORMATION AS SHOWN BELOW: **PART NUMBER-REVISION** (AND **TYPE** IF INDICATED), FOLLOWED ON THE NEXT LINE WITH A UNIQUE 3-DIGIT **SERIAL NUMBER** STARTING AT 001 FOR THE FIRST PART AND INCREMENTING THEREAFTER. USE 0.38" TALL CHARACTERS UNLESS PART SIZE DICTATES SMALLER.

D071307-V2
 S/N - ###

POST-MANUFACTURING NOTES:

- P1) CLEAN TO LIGO STANDARDS, CLASS B (PER E0900047 AND E960022).

APPROVALS		DATE	UNLESS OTHERWISE SPECIFIED: DIMENSIONS ARE IN INCHES DECIMAL TOLERANCES: .XX ±.015 .XXX ±.005 ANG TOL: ± 1° SURFACE ROUGHNESS: REMOVE ALL SHARP EDGES. LEAVE .005 X 45° MIN CHAMFER, OR .005 MIN RADIUS. THIS PRINT & THE EMBEDDED CAD MODEL ARE THE DOCUMENTATION OF RECORD, UNLESS OTHERWISE SPECIFIED. ALL DIMENSIONS IN THE MODEL ARE BASIC, WITH TOLERANCES GIVEN BY: .010 A B	ORIGINAL DESIGN BY: High Precision Devices 1468 Valtec Lane, Suite C, Boulder, Colorado 80301 Phone: (303) 447-2558 Fax: (303) 447-2548 Web Site: www.hpd-online.com	MODIFIED BY:
ENGINEERING (HPD): D. Senders		6/15/2007		DESCRIPTION: Spring Pull-Down, Base	
QUALITY (HPD): C. Danaher		6/15/2007	P/N: D071307	CONFIG: -	
MATERIAL: 6061-T6 Al			CAD FILE NAME: D071307_Spring_Pull-Down-Base		
FINISH: None			PROJECT: HAM ISI, Advanced LIGO		
MASS: 0.3 lbs			SIZE SCALE: 1:1	DRAWN BY: Dave Senders (HPD)	
			SHEET 1 OF 1	DATE PRINTED: 4/24/2009	
				REV V2	