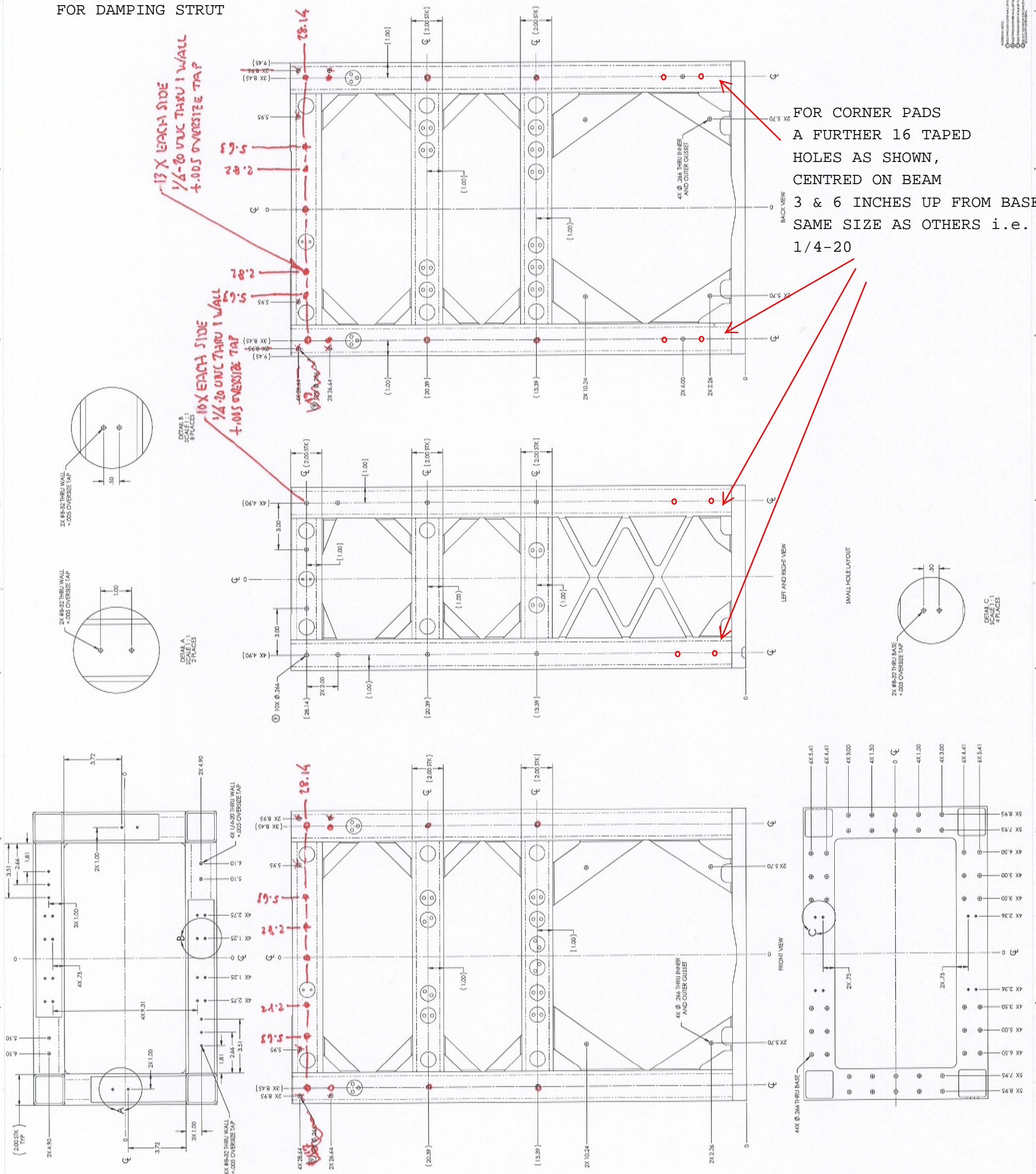


FOR DAMPING STRUT

13 X EACH SIDE  
1/4-20 UNC THRU 1 WALL  
+.005 OVERSIDE TAP

10 X EACH SIDE  
1/4-20 UNC THRU 1 WALL  
+.005 OVERSIDE TAP

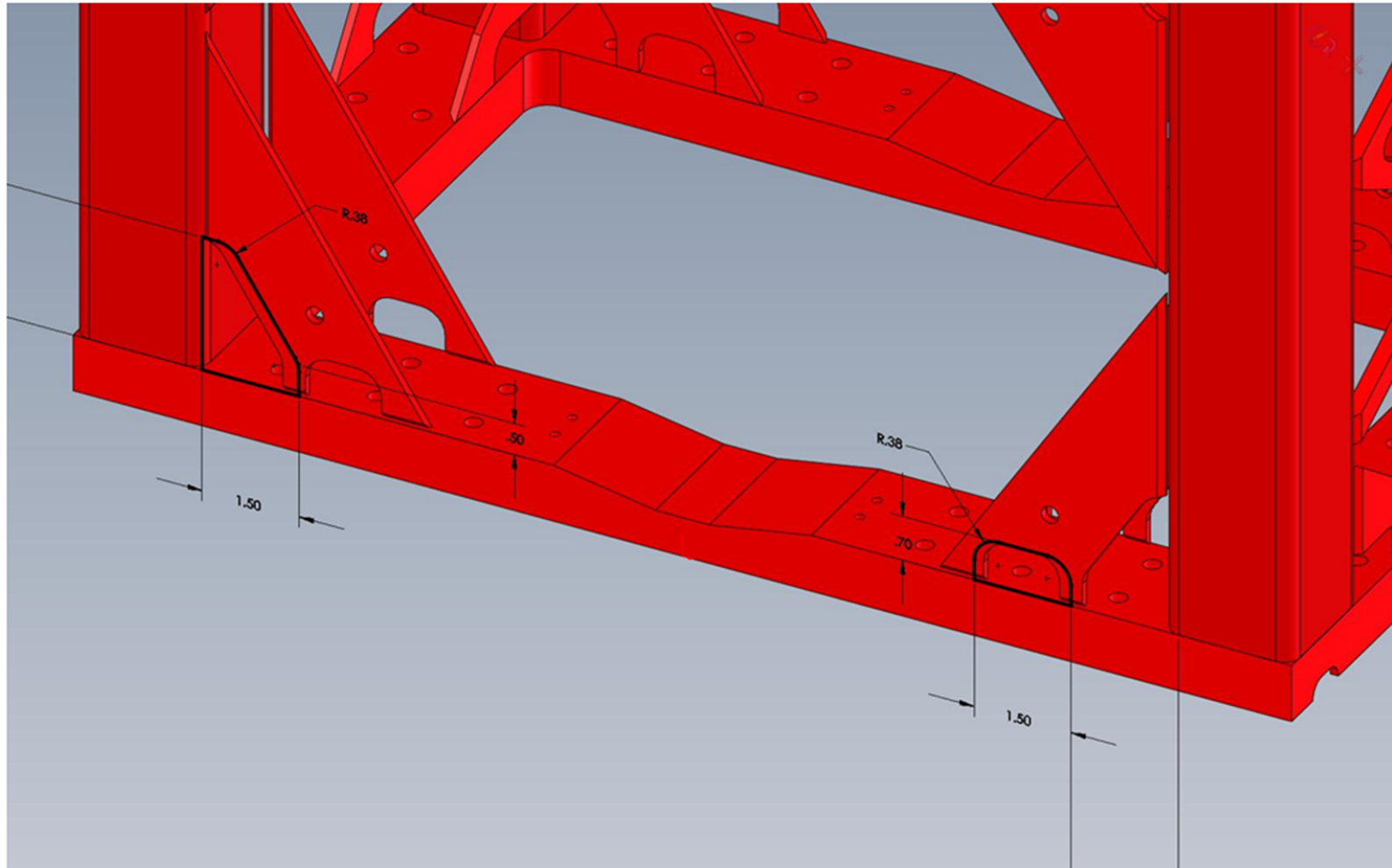
FOR CORNER PADS  
A FURTHER 16 TAPED  
HOLES AS SHOWN,  
CENTRED ON BEAM  
3 & 6 INCHES UP FROM BASE,  
SAME SIZE AS OTHERS i.e.  
1/4-20



REVISED BY: [Signature]  
DATE: 10/15/03  
DRAWN BY: [Signature]  
DATE: 10/15/03  
CHECKED BY: [Signature]  
DATE: 10/15/03  
SCALE: AS SHOWN  
SHEET NO. 1 OF 1

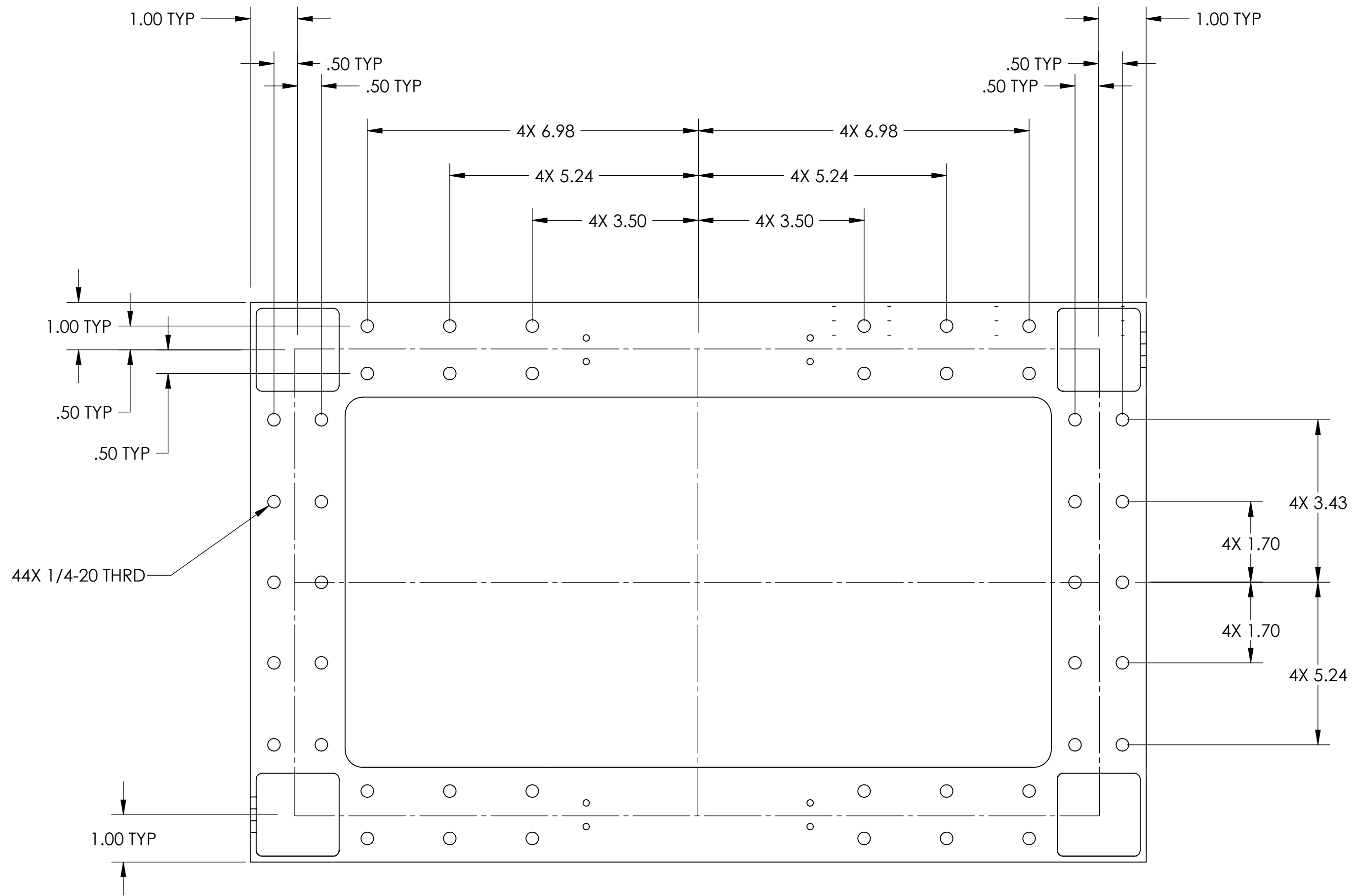
D070442-v3

## Request to increase the size of the cutouts in the HLTS gussets. or move gussets



Request to increase the size of the cutouts in the gussets of HLTS to provide more clearance and allow increased range of motion to clamps when securing the HLTS to the HAM tables.

The sketch above describes an increase in length of the cutouts in features. Dimensions shown are arbitrary examples. Cutout size will be determined by the available space and gusset configuration.



**HLTS PROPOSED SPACER MOUNTING HOLE LOCATIONS**  
**SHANKLE 02.02.2010**