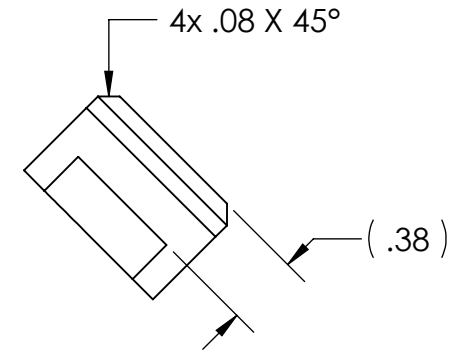


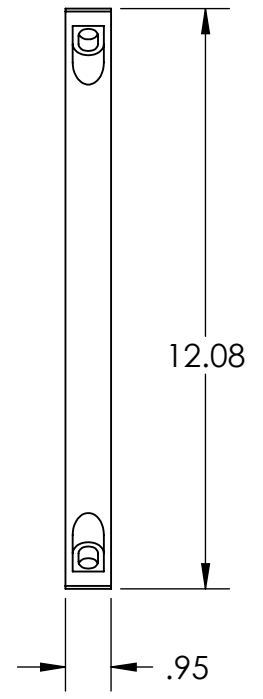
NOTES CONTINUED:
 5. SCRIBE, ENGRAVE, OR MECHANICALLY STAMP (NO INKS OR DYES) DRAWING PART NUMBER AND REVISION ON NOTED SURFACE FOLLOWED ON THE NEXT LINE BY A THREE DIGIT SERIAL NUMBER. SERIAL NUMBERS START AT 001 FOR THE FIRST ARTICLE AND PROCEED CONSECUTIVELY. USE .07" HIGH CHARACTERS. EXAMPLE: DXXXXXX-VY, S/N 001. A VIBRATORY TOOL MAY BE USED.

POST-MANUFACTURING NOTES:
 P1. CLEAN TO LIGO STANDARDS, CLASS B (PER E0900047 AND E960022).

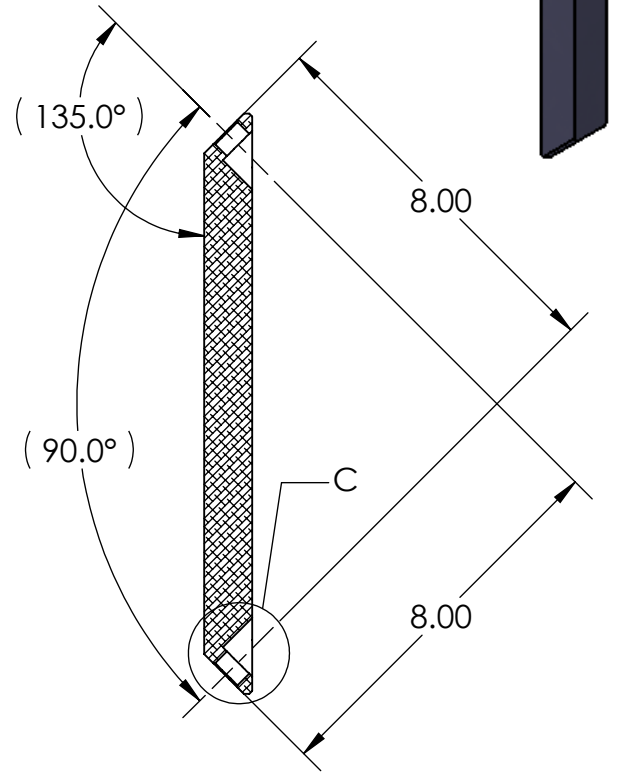
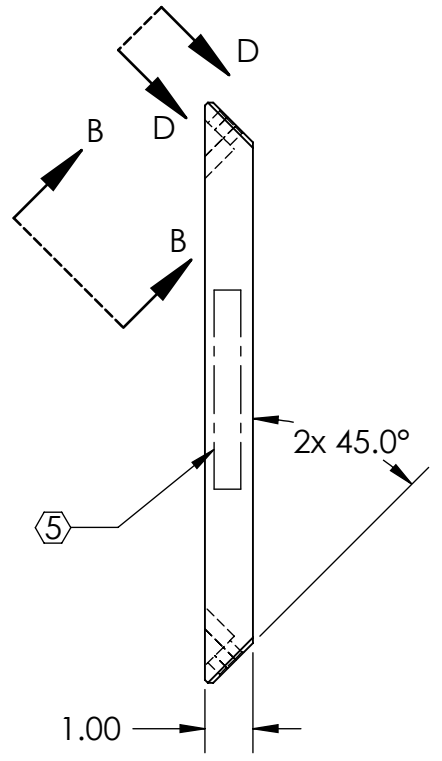
REV.	DATE	DCN #	DRAWING TREE #
V1	30 Apr 2009		



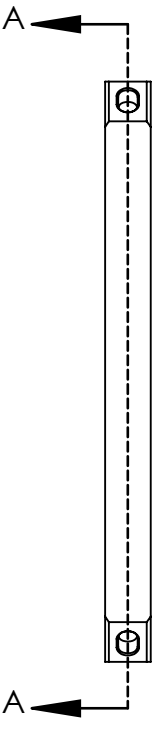
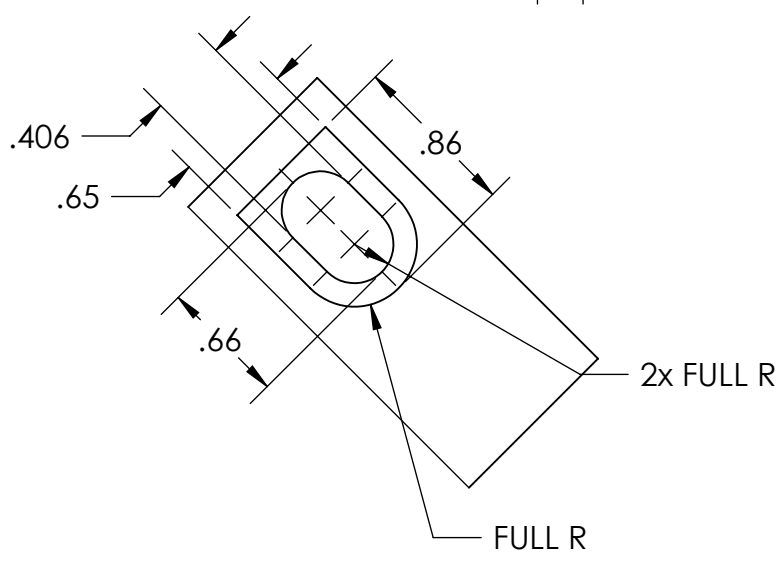
SECTION D-D
SCALE 1 : 1



SECTION B-B
SCALE 1 : 1



SECTION A-A



DETAIL C
SCALE 1 : 1

Mass = 1.0 lbs

NOTES AND TOLERANCES: (UNLESS OTHERWISE SPECIFIED)				LIGO CALIFORNIA INSTITUTE OF TECHNOLOGY MASSACHUSETTS INSTITUTE OF TECHNOLOGY		PART NAME	
DIMENSIONS ARE IN INCHES				ADVANCED LIGO		Brace, Horiz GS-13 Shelf, HAM ISI	
TOLERANCES: .XX ± .015 .XXX ± .005				SUB-SYSTEM SEI		DESIGNER	astein 22 Apr 2009
ANGULAR ± 0.5°				NEXT ASSY D0900335		DRAFTER	sbarnum 22 Apr 2009
MATERIAL 6061-T6 Al		FINISH 63 μinch		CHECKER	astein 22 Apr 2009	SIZE DWG. NO.	B D0900338
				APPROVAL	astein 30 Apr 2009	REV.	v1
						SCALE: 1:4	PROJECTION:
						SHEET 1 OF 1	

D0900338_Brace-Horiz_GS-13_Shelf-HAM_ISI, PART PDM REV: X-004, DRAWING PDM REV: X-003