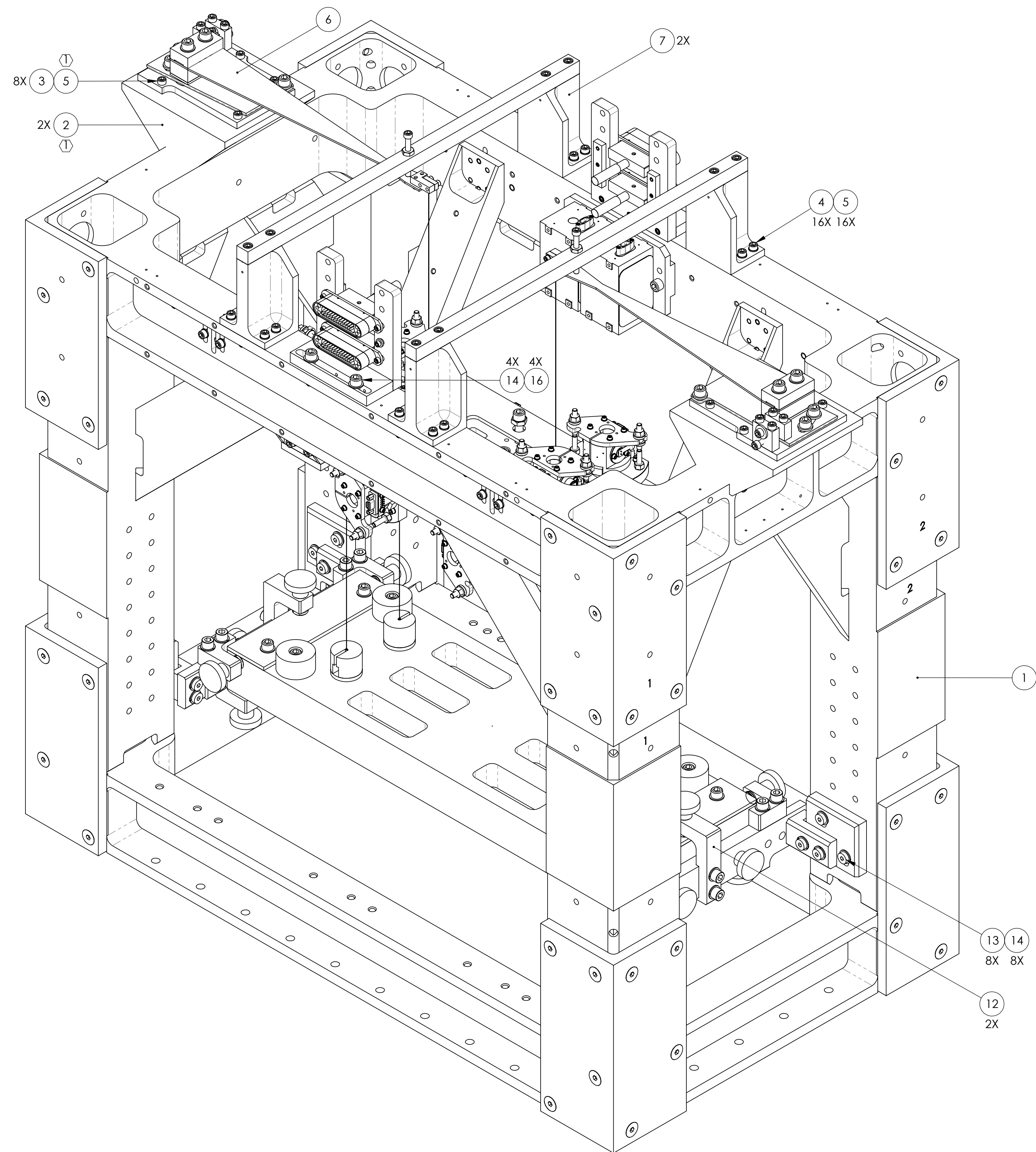


REV.	DATE	DCN #	DRAWING TREE #
v1	20 MAY 2009	E0900053	E0900052
v2	-	INTERNAL REVISION	E0900061
v3	28 JAN 2013	E1300085	E0900061



ITEM NO.	PART NUMBER	DESCRIPTION	MATERIAL	REQ	SPARE	TOTAL
16	-	SCREW, SOCKET HEAD CAP, 1/4-20 UNC-2A X 0.625 LONG	300 SSSL	4	1	5
15	D1001346	HAM TABLE CABLE BRACKET ASSY	N/A	2	0	2
14	-	WASHER, FLAT, VENTED, 1/4 (U-C COMPONENTS P/N WFV-25 OR EQUIVALENT)	300 SSSL	12	3	15
13	-	SCREW, SOCKET HEAD CAP, LOW HEAD, 1/4-20 X 0.75 LONG	300 SSSL	8	2	10
12	D1201441	EARTHQUAKE STOP ASSY	N/A	2	0	2
11	-	SCREW, SOCKET HEAD CAP, #8-32 UNC-2A X 0.625 LONG	300 SSSL	16	4	20
10	D1201213	COIL HOLDER ASSY	N/A	1	0	1
9	-	SCREW, SOCKET HEAD CAP, 1/4-20 UNC-2A X 0.75 LONG	300 SSSL	2	1	3
8	D1201502	BRACKET AND PREAMP ASSY	N/A	1	0	1
7	D070145	TOP BLADE GUARD ASSY	N/A	2	0	2
6	D1201212	SUSPENDED MASS ASSY	N/A	1	0	1
5	-	SCREW, SOCKET HEAD CAP, #8-32 UNC-2A X 0.5 LONG	300 SSSL	44	9	53
4	-	WASHER, FLAT, #8 (NAS 620-C8 OR EQUIVALENT)	300 SSSL	52	13	65
3	1185-2EN246	HELICOIL, #8-32 X 0.246 LONG (1)	NITRONIC 60	8	4	12
2	D070028	BLADE PLATFORM (1)	6061-T6 AL	2	0	2
1	D0900655	STRUCTURAL WELDMENT ASSY	N/A	1	0	1

**NOTES AND TOLERANCES: (UNLESS OTHERWISE SPECIFIED)**

1 HELICOILS TO BE INSTALLED INTO ITEM NO. 2 BY LIGO PRIOR TO ASSEMBLY AND AFTER ALL PARTS ARE CLEANED AND BAKED.

2. PARTS TO BE ASSEMBLED ACCORDING TO T080117 OMCS ASSEMBLY SPECIFICATION.

**MATERIAL** N/A **FINISH** N/A μinch

**LIGO** CALIFORNIA INSTITUTE OF TECHNOLOGY  
MASSACHUSETTS INSTITUTE OF TECHNOLOGY

SYSTEM: ADVANCED LIGO SUB-SYSTEM: SUS

NEXT ASSY: OMCS OVERALL ASSY AND FIXTURES

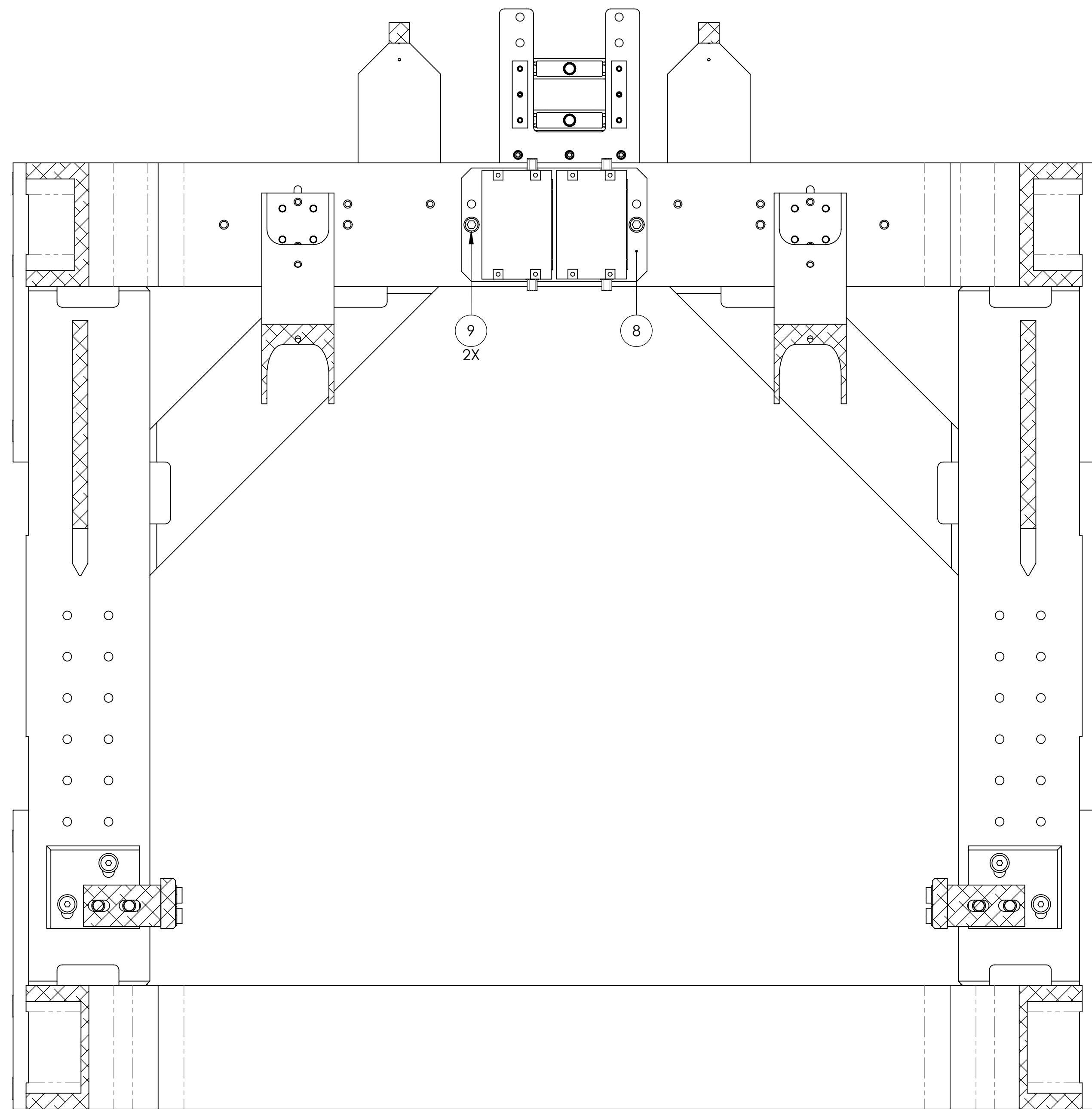
**PART NAME**  
OMCS OVERALL ASSY

DESIGNER: D. BRIDGES 28 JAN 2013  
DRAFTER: D. BRIDGES 27 FEB 2013  
CHECKER: B. MOORE 27 FEB 2013

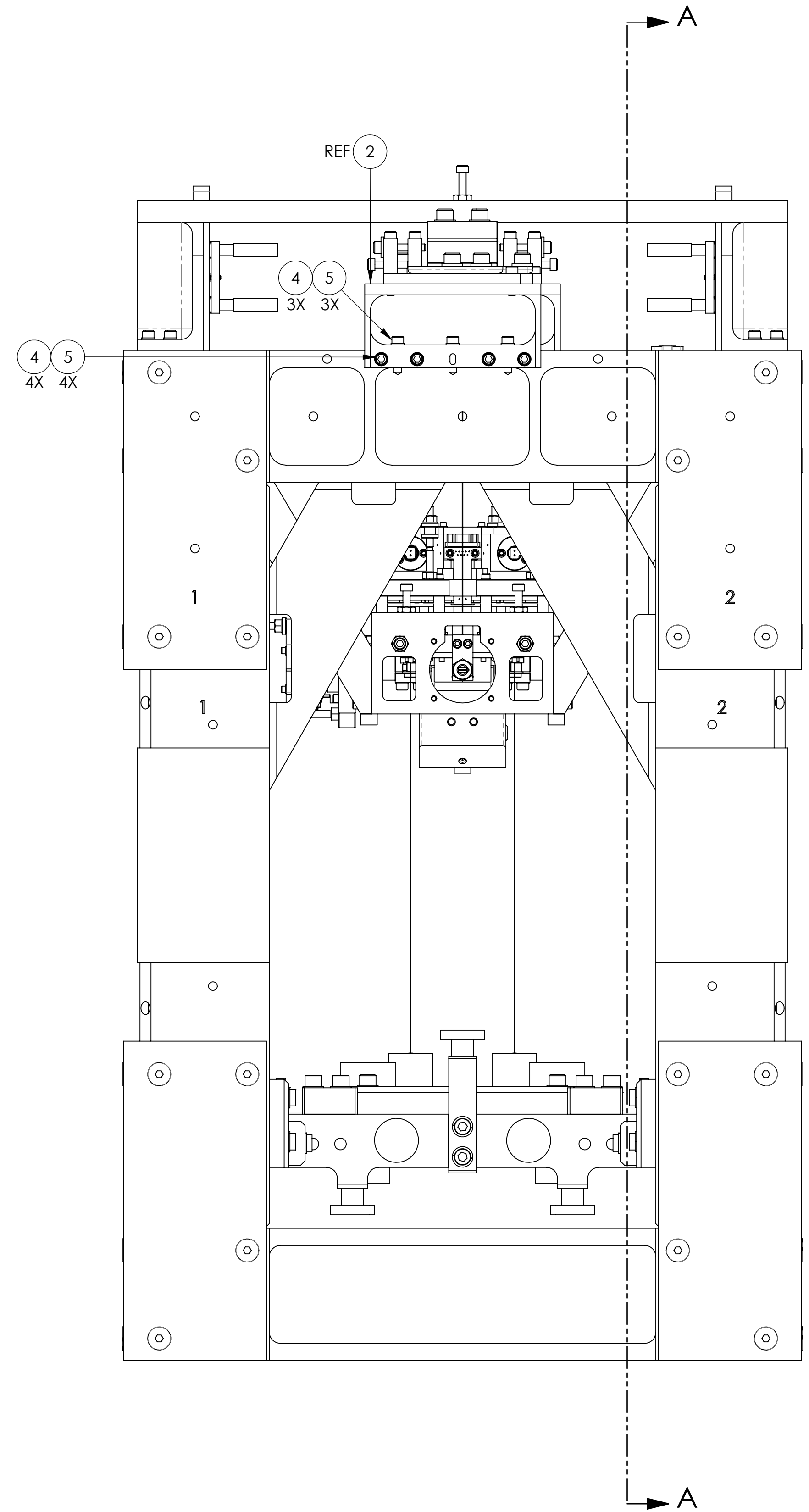
SIZE: D DWG. NO.: D0900295 REV.: v3

SCALE: 1:2 PROJECTION: SHEET 1 OF 3

D0900295\_AdrLIGO\_SUS\_Output/Mode Cleaner Overall Assembly, PART PDM REV: V3-000, DRAWING PDM REV: V1-000

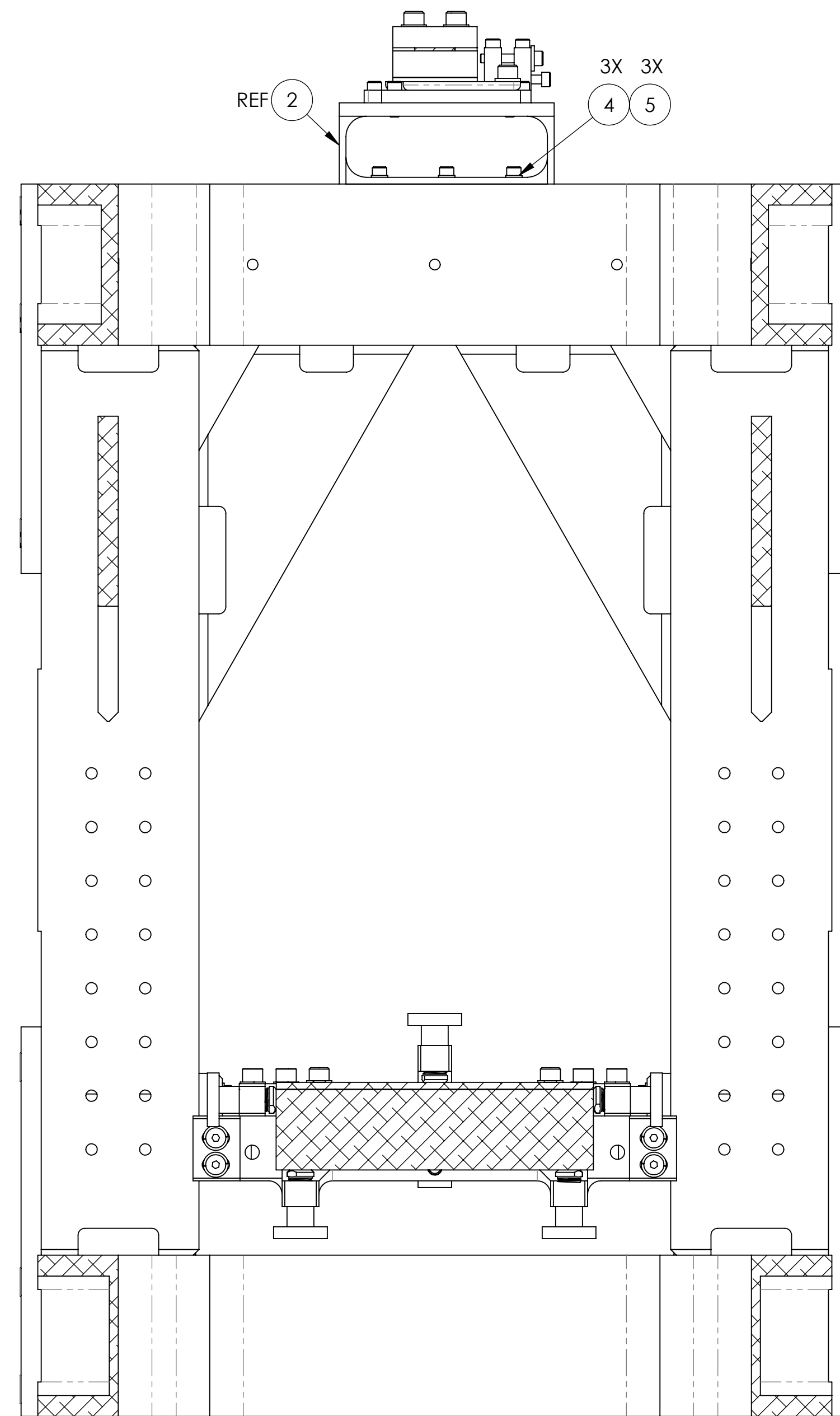
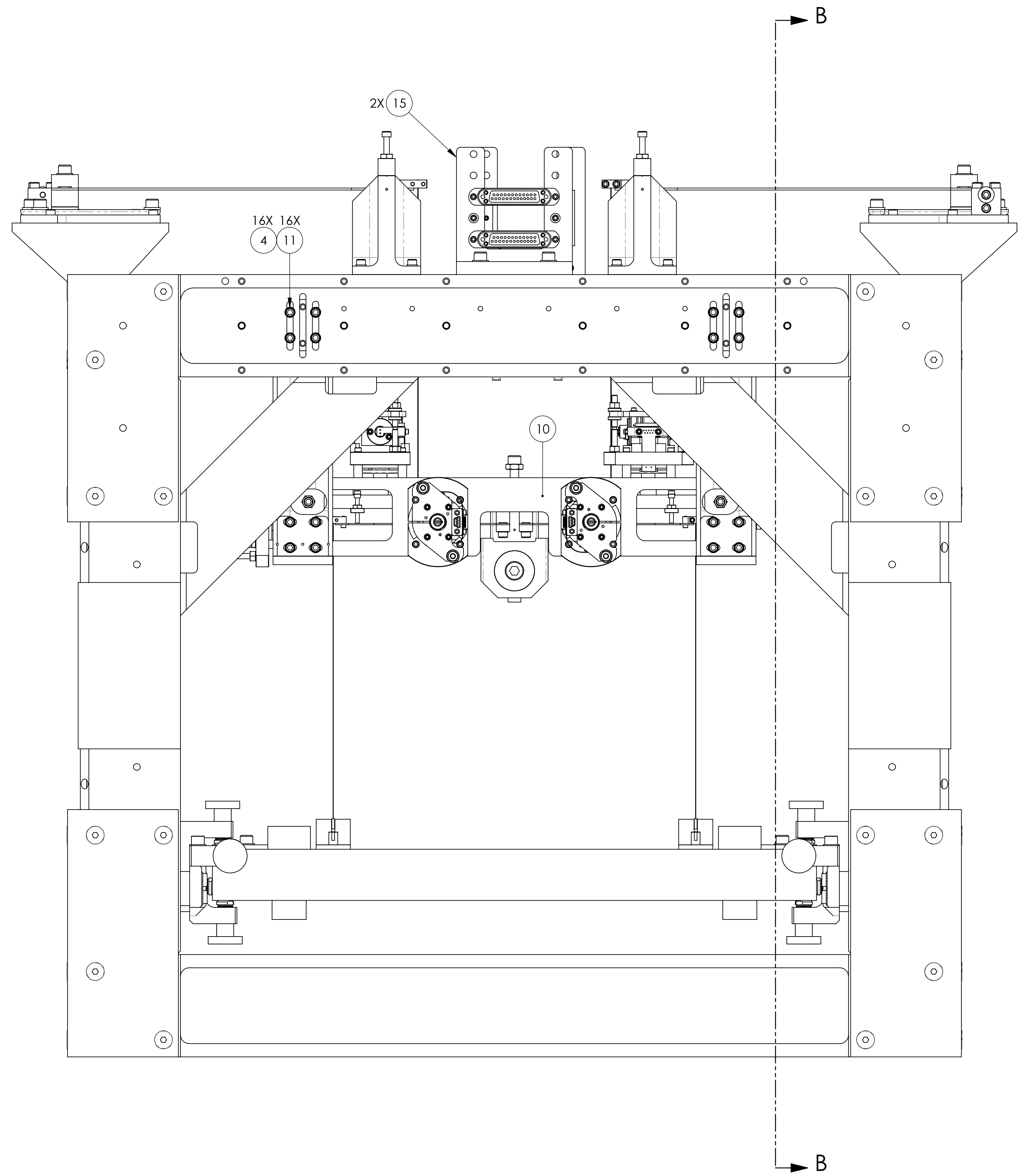


SECTION A-A



		CALIFORNIA INSTITUTE OF TECHNOLOGY MASSACHUSETTS INSTITUTE OF TECHNOLOGY	
SIZE	DWG. NO.	REV.	
D	D0900295	v3	
SCALE: 1:2	PROJECTION:	SHEET 2 OF 3	

D0900295\_Avd1UGO\_SUS\_Output/Mode Cleaner Overall Assembly; PART PDM REV: V3-000; DRAWING PDM REV: V1-000



SECTION B-B

DD0900295\_AsdLIGO\_SUS\_Output/Mode Cleaner Overall Assembly: PART PDM REV: V3-000, DRAWING PDM REV: V1-000