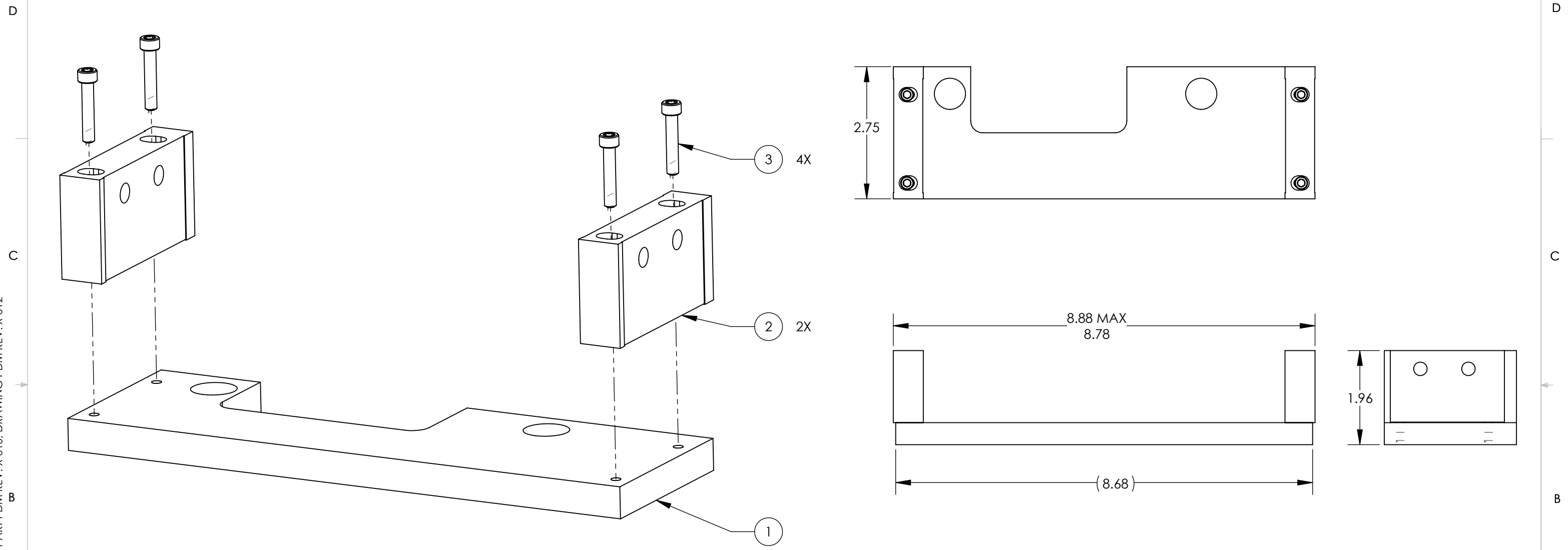


D0900170\_AdlIGO\_AOS\_FID0901161\_Earthquake Crossbar Assy, PART PDM REV: X-016, DRAWING PDM REV: X-012

| REV. | DATE        | DCN #    | DRAWING TREE # |
|------|-------------|----------|----------------|
| v1   | 07 OCT 2010 | E1000563 | -              |
| v2   | 23 MAR 2011 | E1000563 | -              |
| v3   | 14 NOV 2012 | E1000563 | -              |



| ITEM NO. | PART NUMBER | DESCRIPTION                                     | MATERIAL   | REQ | TOTAL |
|----------|-------------|---|------------|-----|-------|
| 3        | C-814-N     | C-814-N_SHCS 8-32 X .875 IN LONG, UC COMPONENTS | 18-8 SSTL  | 4   | 4     |
| 2        | D0900169    | CROSSBAR SIDE                                   | 6061-T6 Al | 2   | 2     |
| 1        | D0900168    | CROSSBAR PLATE                                  | 6061-T6 Al | 1   | 1     |

**NOTES AND TOLERANCES: (UNLESS OTHERWISE SPECIFIED)**

1. INTERPRET DRAWING PER ASME Y14.5-1994.  
 2. REMOVE ALL SHARP EDGES, R.02 MIN.  
 3. DO NOT SCALE FROM DRAWING.  
 4. ALL MACHINING FLUIDS MUST BE FULLY SYNTHETIC, FULLY WATER SOLUBLE AND FREE OF SULFUR, SILICONE, AND CHLORINE.

DIMENSIONS ARE IN  
 TOLERANCES:  
 .XX ±  
 .XXX ±  
 ANGULAR ± °

MATERIAL: -- FINISH: -- μinch

**LIGO** CALIFORNIA INSTITUTE OF TECHNOLOGY  
 MASSACHUSETTS INSTITUTE OF TECHNOLOGY

SYSTEM: **ADVANCED LIGO** SUB-SYSTEM: **AOS**

PART NAME: **EARTHQUAKE CROSSBAR ASSY**

DESIGNER: N.Nguyen 17 Jun 2009  
 DRAFTER: M. SMITH 01 JUL 2009  
 CHECKER: C. TORRIE 01 JUL 2009  
 APPROVAL: C. TORRIE 01 JUL 2009

SIZE: **B** DWG. NO.: **D0900170** REV.: **v3**

SCALE: 3:4 PROJECTION: SHEET 1 OF 1

8 7 6 5 4 3 2 1

D  
C  
B  
A

D  
C  
B  
A

8 7 6 5 4 3 2 1