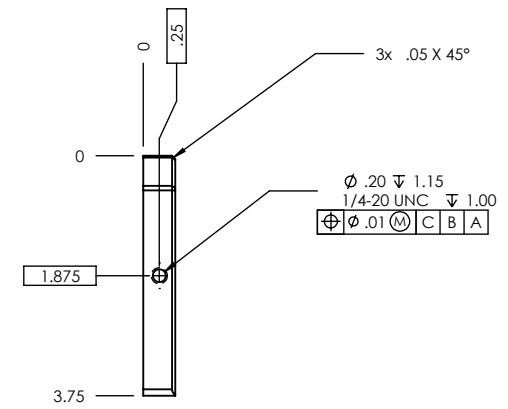
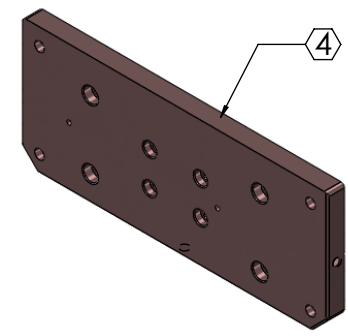
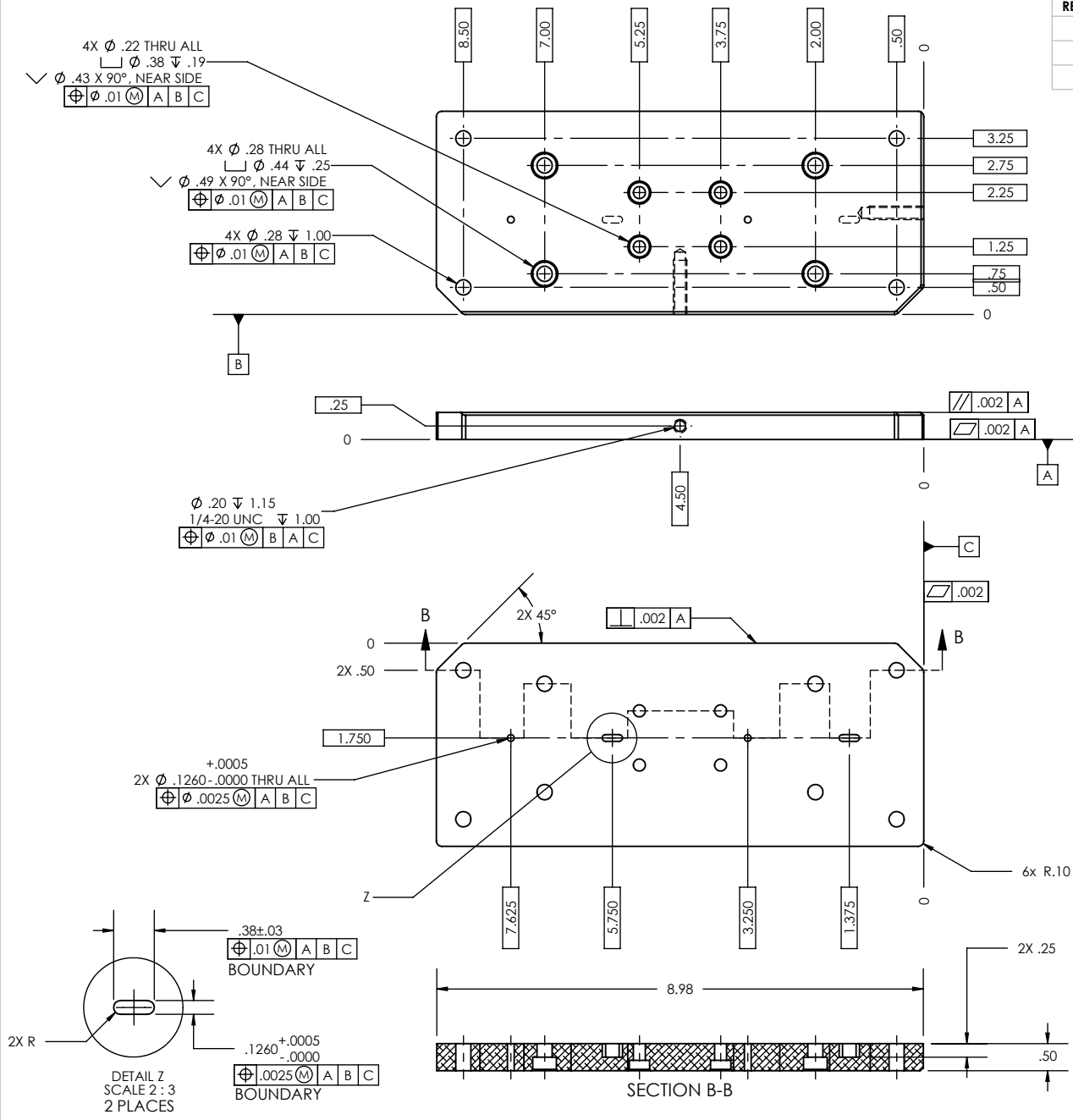


REV.	DATE	DCN #	DRAWING TREE #
-	-	-	-
-	-	-	-
-	-	-	-



**NOTES: (UNLESS OTHERWISE SPECIFIED)**

- REMOVE ALL SHARP EDGES, R.02 MIN.
- DO NOT SCALE FROM DRAWING.
- ALL MACHINING FLUIDS SHALL BE WATER SOLUBLE AND FREE OF SULFUR, CHLORINE AND SILICONE, SUCH AS CINCINNATI MILACRON'S CIMTECH 410 (SSTL)
- SCRIBE, ENGRAVE, OR MECHANICALLY STAMP (NO INKS OR DYES) DRAWING PART NUMBER AND REVISION ON NOTED SURFACE FOLLOWED ON THE NEXT LINE BY A THREE DIGIT SERIAL NUMBER. SERIAL NUMBERS START AT 001 FOR THE FIRST ARTICLE AND PROCEED CONSECUTIVELY. USE .07" HIGH CHARACTERS. EXAMPLE: DXXXXXX-VY, S/N 001. A VIBRATORY TOOL MAY BE USED.

DIMENSIONS ARE IN INCHES  
 TOLERANCES:  
 .XX ± .01  
 .XXX ± .005  
 ANGULAR ± 0.5°

**CALIFORNIA INSTITUTE OF TECHNOLOGY**  
**LIGO**  
**MASSACHUSETTS INSTITUTE OF TECHNOLOGY**  
**IGR, GLASGOW UNIVERSITY GEO 600 GROUP**

**MATERIAL** 6061 Alloy  
**FINISH** 63 μinch

**SYSTEM** ADVANCED LIGO  
**SUB-SYSTEM** SEI  
**NEXT ASSY** D0900156

**PART NAME** Test Jig, Actuator Carrier

DESIGNER	NAME	DATE	SIZE	DWG. NO.	REV.
DRAFTER	Sbarnum	Feb 2009	A	D0900161	V1
CHECKER	fmatichard	25 Mar 2009	SCALE: 1:3	PROJECTION:	SHEET 1 OF 1