

GENERAL NOTES

1. PROVIDE ELECTRICAL WORK IN ACCORDANCE WITH THE LATEST EDITION OF THE NEC, AND IN ACCORDANCE WITH STATE AND LOCAL JURISDICTIONS.
2. IDENTIFY AND LOCATE AVAILABLE CIRCUITS AS DIRECTED BY OWNERS ELECTRICAL REPRESENTATIVE.

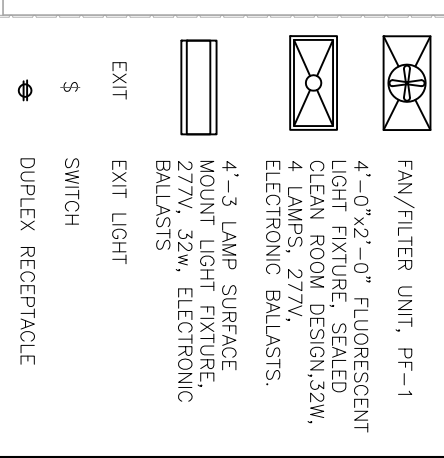
DEMOLITION NOTES

REMOVE LIGHTS IN CLEAN AREAS. LIGHTS IN WAREHOUSE AREA (WEST END) ARE TO REMAIN.
REMOVE HEATERS IN CLEAN AREAS. HEATERS IN WAREHOUSE AREA (WEST END) ARE TO REMAIN.

CONSTRUCTION NOTES

1. PROVIDE POWER AND DISCONNECT FOR HP-1. POWER CONDUCTORS SHALL BE ROUTED IN CONDUIT AND CONNECTED TO CIRCUITS AS DIRECTED BY THE OWNERS ELECTRICAL REPRESENTATIVE.
2. INSTALL SWITCHING FOR EIGHT LIGHT FIXTURES DESIGNATED /1\ ON SWITCH "1", EIGHT LIGHT FIXTURES DESIGNATED /2\ ON SWITCH "2", SEVEN LIGHT FIXTURES DESIGNATED /3\ ON SWITCH "3", SEVEN LIGHT FIXTURES DESIGNATED /4\ ON SWITCH "4". TWO LIGHT FIXTURES DESIGNATED /5\ ON SWITCH "7". CONDUCTORS SHALL BE ROUTED IN CONDUIT AND CONNECTED TO CIRCUITS AS DIRECTED BY THE OWNERS ELECTRICAL REPRESENTATIVE.
3. PROVIDE CONTROL PANEL AND NETWORK FOR SPEED CONTROL OF FILTER UNITS. FILTER UNITS DESIGNATED /5\ SHALL BE CONTROLLED BY CONTROL PANEL CP1. FILTER UNITS DESIGNATED /6\ SHALL BE CONTROLLED BY CONTROL PANEL CP2. POWER CONDUCTORS SHALL BE ROUTED IN CONDUIT AND CONNECTED TO CIRCUITS AS DIRECTED BY THE OWNERS ELECTRICAL REPRESENTATIVE.
4. EXTEND EXISTING RECEPTACLES TO THE SURFACE OF THE NEW WALL.
5. PROVIDE NEW DUPLEX RECEPTACLES. DO NOT CONNECT MORE THAN TWO RECEPTACLES PER CIRCUIT. CONDUCTORS SHALL BE ROUTED IN CONDUIT AND CONNECTED TO CIRCUITS AS DIRECTED BY THE OWNERS ELECTRICAL REPRESENTATIVE.

LEGEND

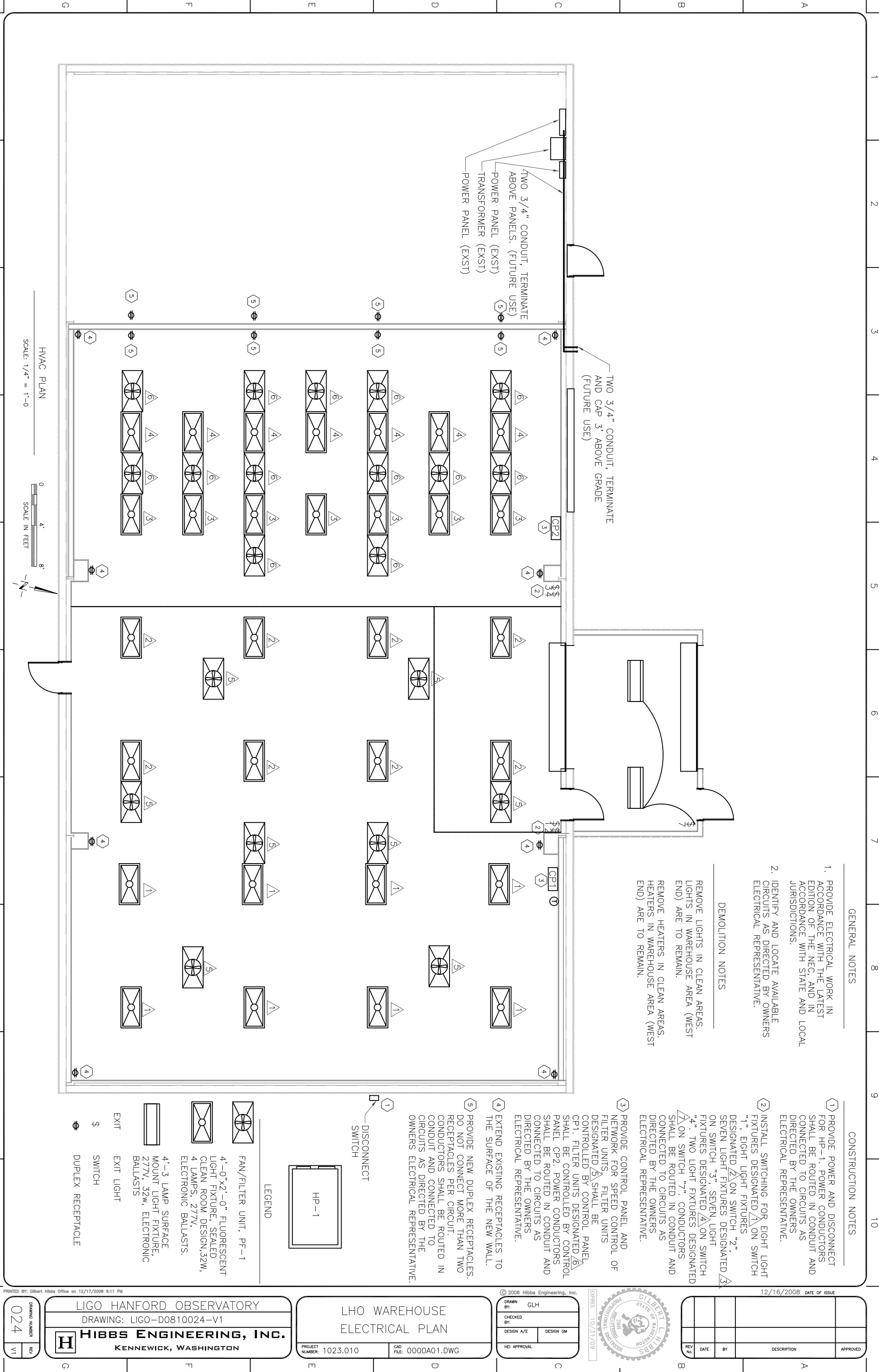


HVAC PLAN
SCALE: 1/4" = 1'-0"



TWO 3/4" CONDUIT, TERMINATE ABOVE PANELS. (FUTURE USE)
POWER PANEL (EXST)
TRANSFORMER (EXST)
POWER PANEL (EXST)

TWO 3/4" CONDUIT, TERMINATE AND CAP 3' ABOVE GRADE (FUTURE USE)



LIGO HANFORD OBSERVATORY
DRAWING: LIGO-D0810024-V1
HIBBS ENGINEERING, INC.
KENNEWICK, WASHINGTON

LHO WAREHOUSE
ELECTRICAL PLAN

PROJECT NUMBER: 1023.010
CAD FILE: 0000A01.DWG

© 2008 Hibbs Engineering, Inc.

DRAWN BY: GLH
CHECKED BY:
DESIGN A/E
DESIGN GM
HEI APPROVAL



REV	DATE	BY	DESCRIPTION	APPROVED