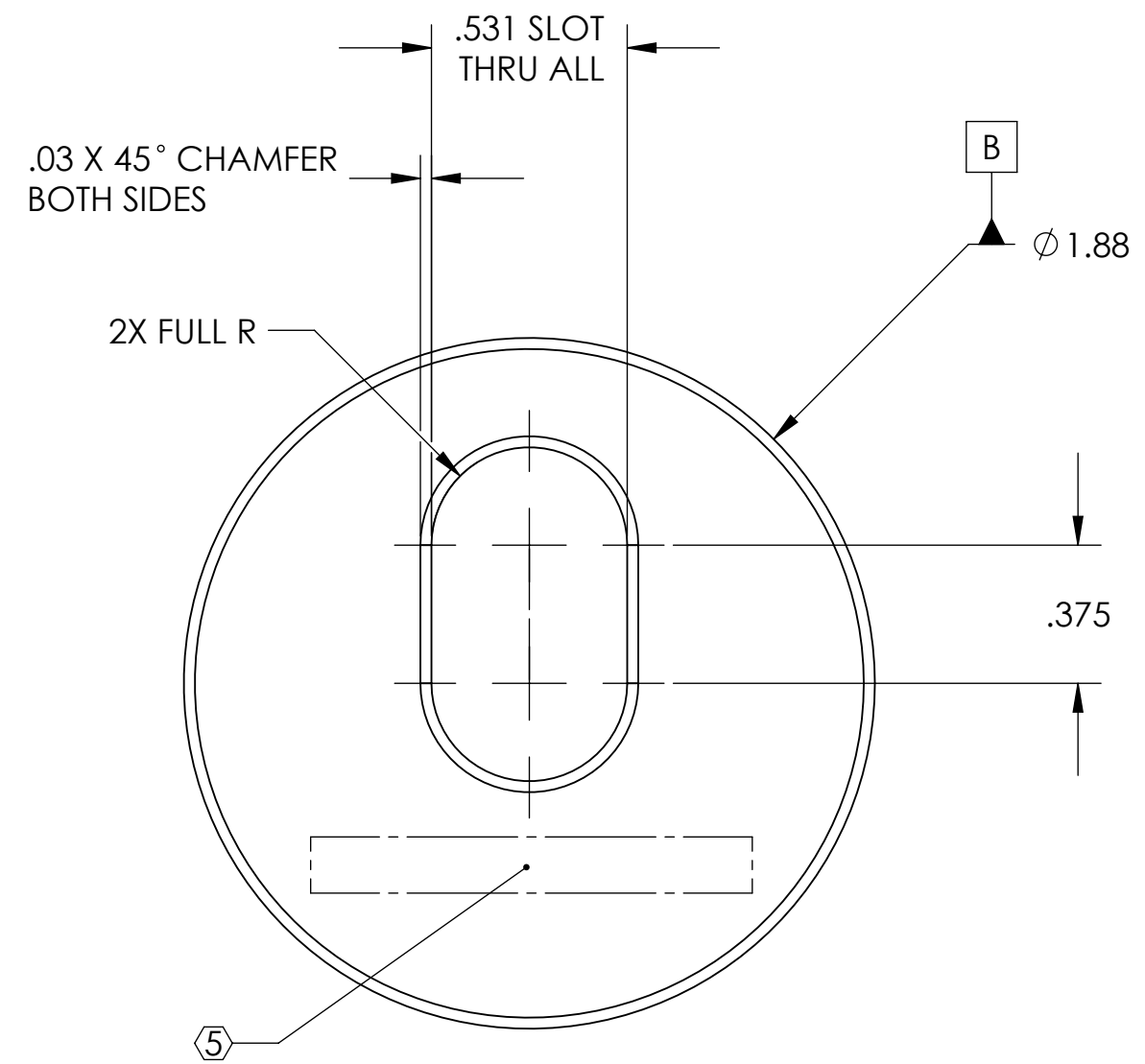
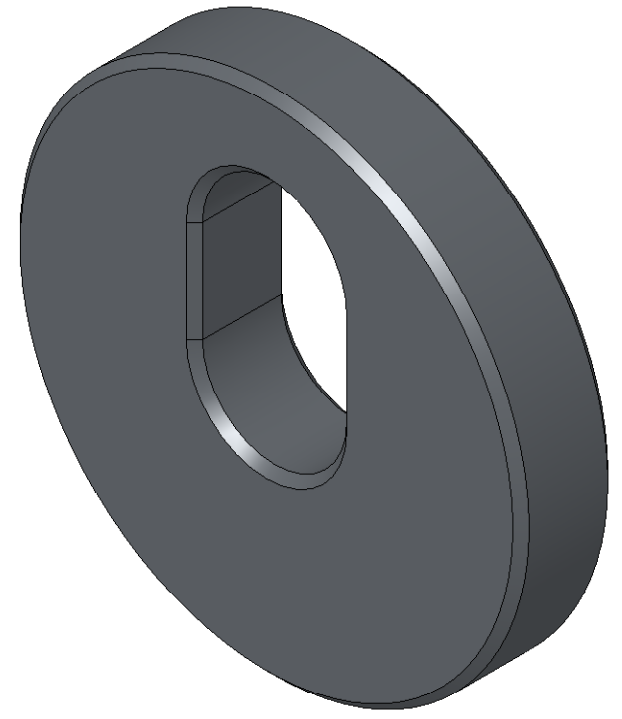
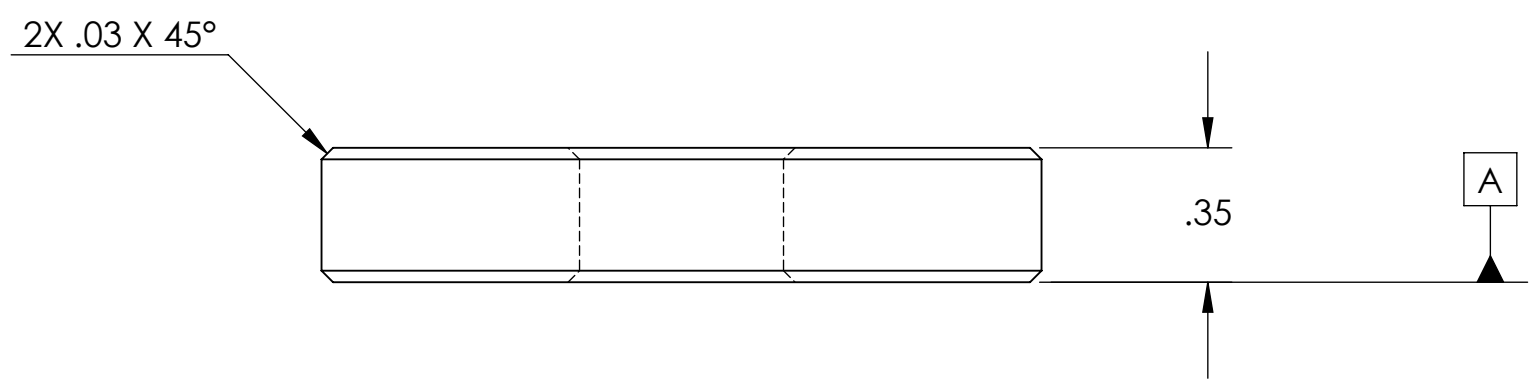


8 7 6 5 4 3 2 1

NOTES CONTINUED:
 5 SCRIBE, ENGRAVE, OR MECHANICALLY STAMP (NO INKS OR DYES) DRAWING PART NUMBER AND REVISION ON NOTED SURFACE FOLLOWED ON THE NEXT LINE BY A THREE DIGIT SERIAL NUMBER. SERIAL NUMBERS START AT 001 FOR THE FIRST ARTICLE AND PROCEED CONSECUTIVELY. USE .07" HIGH CHARACTERS. A VIBRATORY TOOL MAY BE USED.
 EXAMPLE: D080700-v2, S/N 001.

REV.	DATE	DCN #	DRAWING TREE #
v1 / 00	30 Oct 2008	Initial release for LASTI prototype.	
v2	02 Sep 2009	E0900266	



Total Weight: 0.2 lbs

NOTES AND TOLERANCES: (UNLESS OTHERWISE SPECIFIED)	
DIMENSIONS ARE IN INCHES	
TOLERANCES: .XX ± .015 .XXX ± .005 ANGULAR ± 0.5°	
1. INTERPRET DRAWING PER ASME Y14.5-1994. 2. REMOVE ALL SHARP EDGES, R.02 MIN. 3. DO NOT SCALE FROM DRAWING. 4. ALL MACHINING FLUIDS MUST BE FULLY SYNTHETIC, FULLY WATER SOLUBLE AND FREE OF SULFUR, SILICONE, AND CHLORINE.	
MATERIAL	FINISH
303/304 SS	125 µinch

CALIFORNIA INSTITUTE OF TECHNOLOGY MASSACHUSETTS INSTITUTE OF TECHNOLOGY		PART NAME	
ADVANCED LIGO		Crossbeam Washer Disc	
DESIGNER	A. Stein	30 Oct 2008	SIZE DWG. NO.
DRAFTER	A. Stein	30 Oct 2008	B D080700
CHECKER	-		REV.
APPROVAL	K. Mason	02 Sep 2009	v2
NEXT ASSY		SCALE: 2:1	PROJECTION:
HAM SUPPORT STRUCTURE		SHEET 1 OF 1	

D080700_Crossbeam_Washer_Disc, PART PDM REV: X-003, DRAWING PDM REV: X-003

8 7 6 5 4 3 2 1