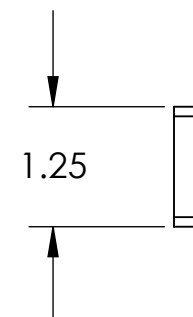
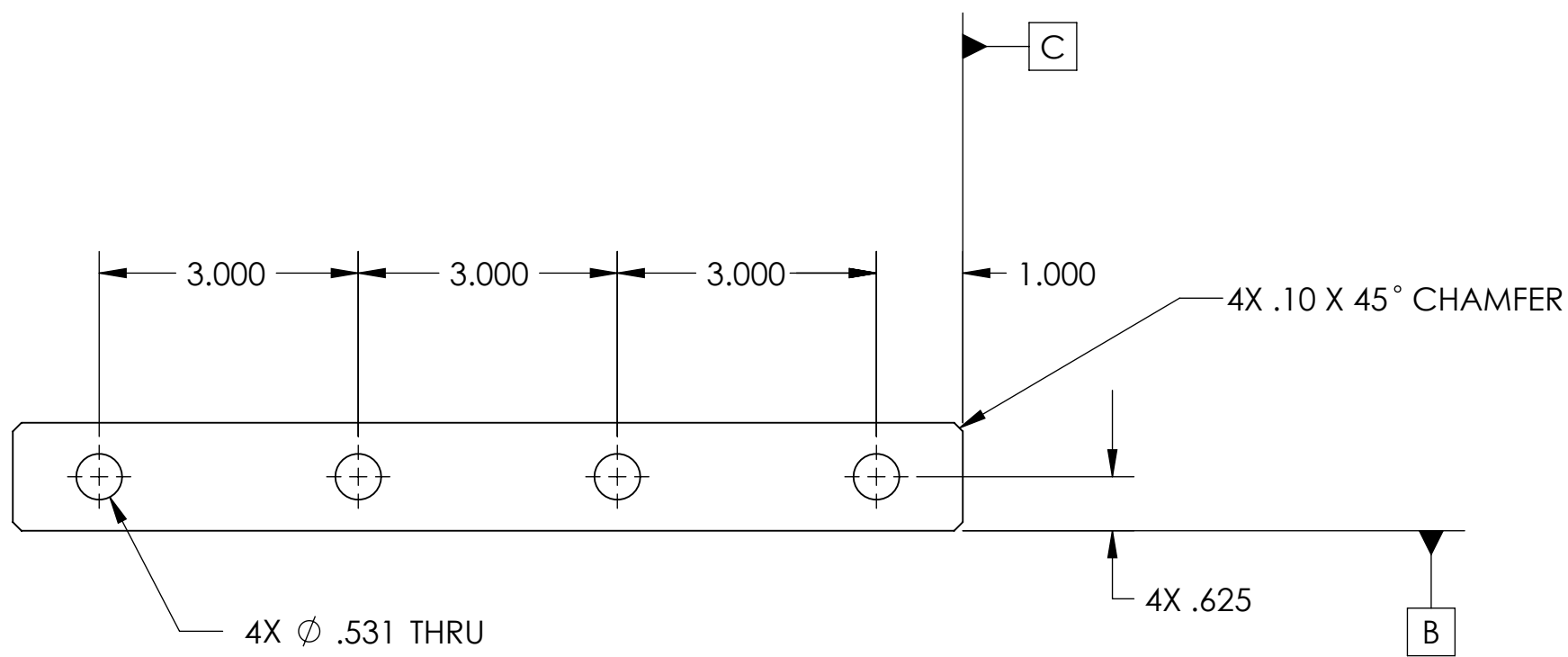
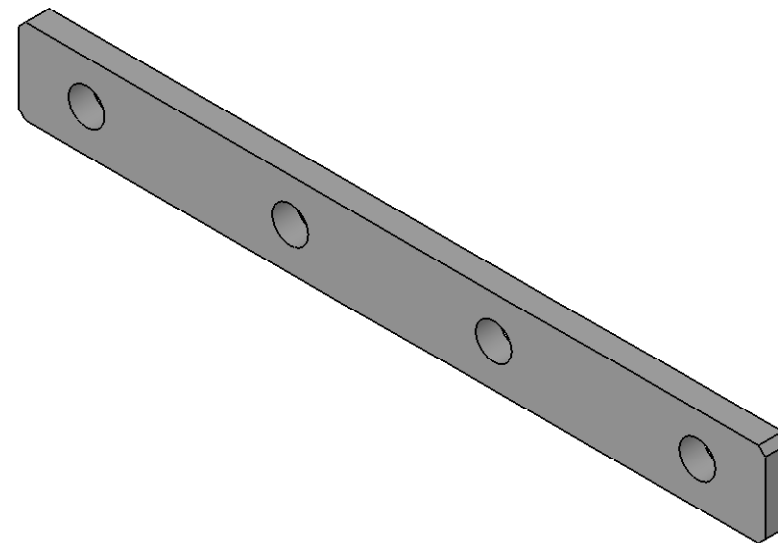
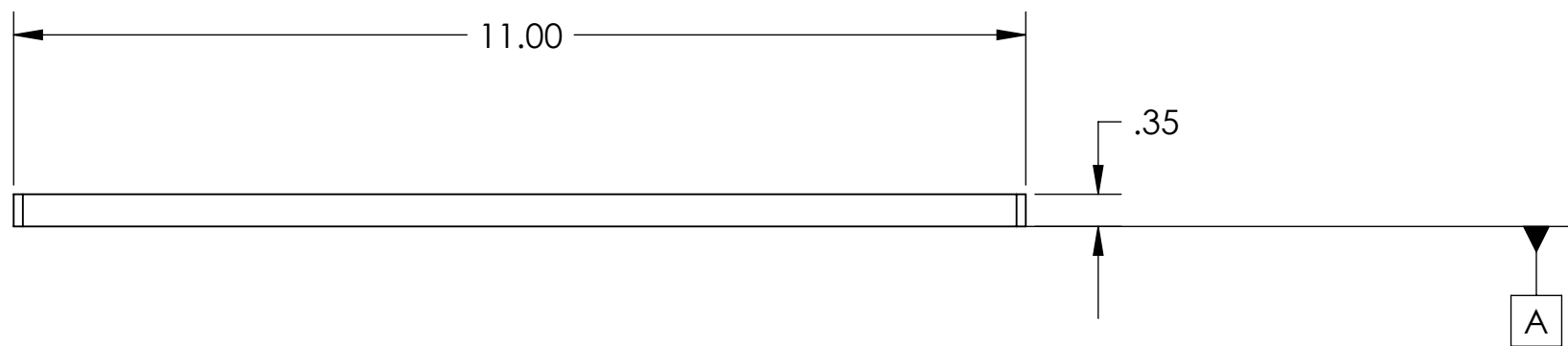


REV	DATE	APPROVAL	DESCRIPTION
00	10/30/2008	A. STEIN	PROTOTYPE RELEASE.



NOTES: (UNLESS OTHERWISE SPECIFIED)			LIGO CALIFORNIA INSTITUTE OF TECHNOLOGY MASSACHUSETTS INSTITUTE OF TECHNOLOGY IGR, GLASGOW UNIVERSITY GEO 600 GROUP													
1. DO NOT SCALE FROM DRAWING. 2. REMOVE ALL SHARP EDGES. LEAVE .005 X 45° MIN CHAMFER, OR .005 MIN RADIUS. 3. ALL MACHINING FLUIDS MUST BE WATER SOLUBLE AND FREE OF SULFUR, CHLORINE AND SILICONE. E.G., MILACRON CIMTECH 410. 4. CLEAN THOROUGHLY TO REMOVE ALL OIL, DIRT, AND CHIPS.			DIMENSIONS ARE IN INCHES TOLERANCES: .XX ± 0.015 .XXX ± 0.005 ANGULAR ± 0.5°													
			MATERIAL 303/304 SS													
FINISH			SYSTEM ADVANCED LIGO													
NONE			SUB-SYSTEM SEI													
<table border="1"> <thead> <tr> <th></th> <th>NAME</th> <th>DATE</th> </tr> </thead> <tbody> <tr> <td>DRAWN</td> <td>A. STEIN</td> <td>10/30/2008</td> </tr> <tr> <td>CHECKED</td> <td>-</td> <td>-</td> </tr> <tr> <td>APPROVED</td> <td>-</td> <td>-</td> </tr> </tbody> </table>				NAME	DATE	DRAWN	A. STEIN	10/30/2008	CHECKED	-	-	APPROVED	-	-	NEXT ASSY HAM SUPPORT STRUCTURE	
	NAME	DATE														
DRAWN	A. STEIN	10/30/2008														
CHECKED	-	-														
APPROVED	-	-														
			PART NAME CROSSBEAM WASHER PLATE #1													
			SIZE B	DWG. NO. D080698												
			SCALE: 1:2	PROJECTION:  SHEET 1 OF 1												
			REV 00													