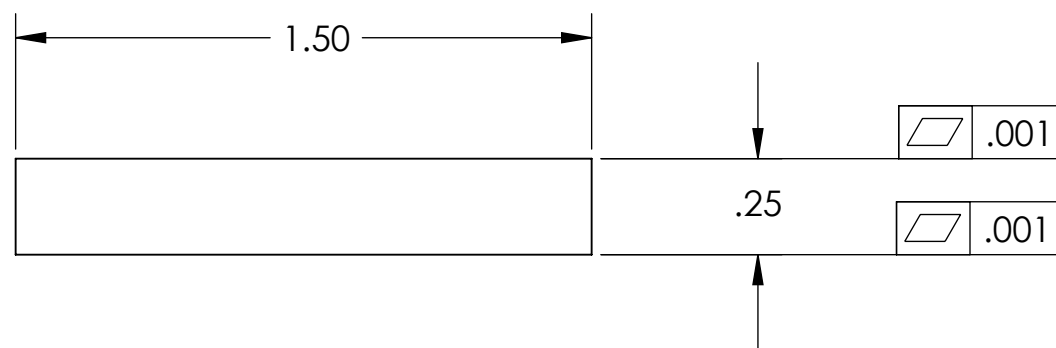
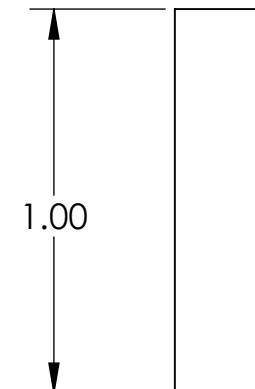
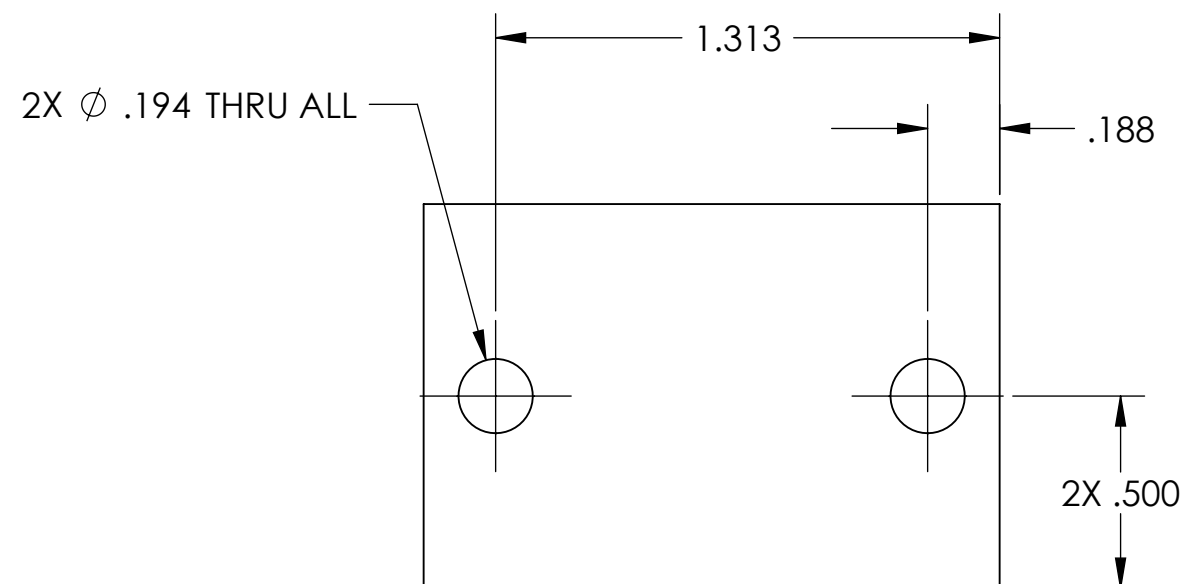




REV	DATE	APPROVAL	DESCRIPTION
00	10/27/2008	A. STEIN	PROTOTYPE RELEASE.



NOTES: (UNLESS OTHERWISE SPECIFIED)			DIMENSIONS ARE IN INCHES		 CALIFORNIA INSTITUTE OF TECHNOLOGY MASSACHUSETTS INSTITUTE OF TECHNOLOGY IGR, GLASGOW UNIVERSITY GEO 600 GROUP												
1. DO NOT SCALE FROM DRAWING. 2. REMOVE ALL SHARP EDGES. LEAVE .005 X 45° MIN CHAMFER, OR .005 MIN RADIUS. 3. ALL MACHINING FLUIDS MUST BE WATER SOLUBLE AND FREE OF SULFUR, CHLORINE AND SILICONE. E.G., MILACRON CIMTECH 410. 4. CLEAN THOROUGHLY TO REMOVE ALL OIL, DIRT, AND CHIPS.			TOLERANCES: .XX ± 0.015 .XXX ± 0.005 ANGULAR ± 0.5 °			SYSTEM ADVANCED LIGO											
MATERIAL 6061-T6			FINISH NONE		SUB-SYSTEM SEI												
<table border="1"> <thead> <tr> <th></th> <th>NAME</th> <th>DATE</th> </tr> </thead> <tbody> <tr> <td>DRAWN</td> <td>A. STEIN</td> <td>10/27/2008</td> </tr> <tr> <td>CHECKED</td> <td>-</td> <td>-</td> </tr> <tr> <td>APPROVED</td> <td>-</td> <td>-</td> </tr> </tbody> </table>				NAME	DATE	DRAWN	A. STEIN	10/27/2008	CHECKED	-	-	APPROVED	-	-	PART NAME KAMAN SENSOR TARGET		NEXT ASSY D080673
	NAME	DATE															
DRAWN	A. STEIN	10/27/2008															
CHECKED	-	-															
APPROVED	-	-															
SIZE B			DWG. NO. D080672		REV 00												
SCALE: 2:1			PROJECTION: 		SHEET 1 OF 1												