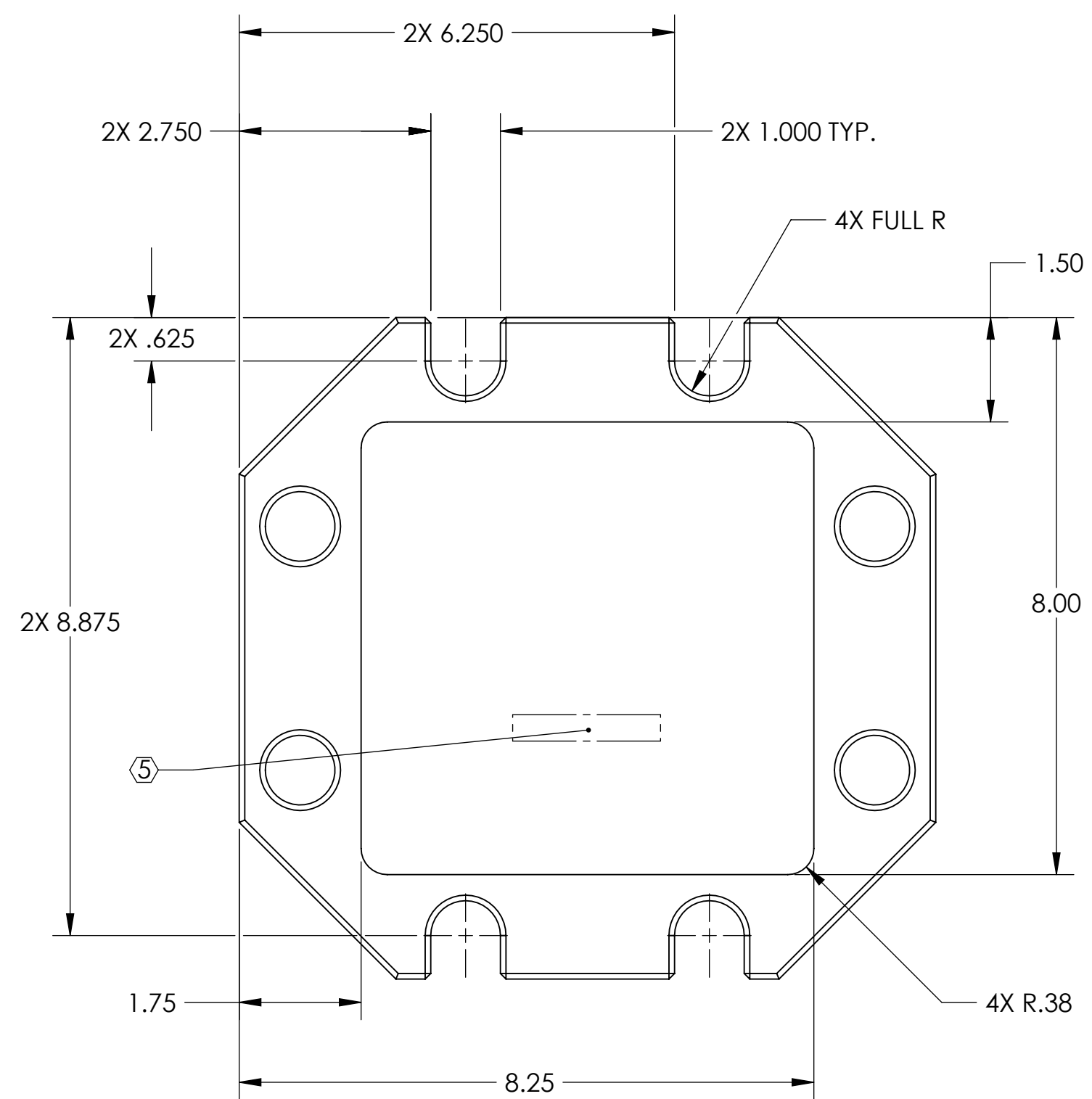
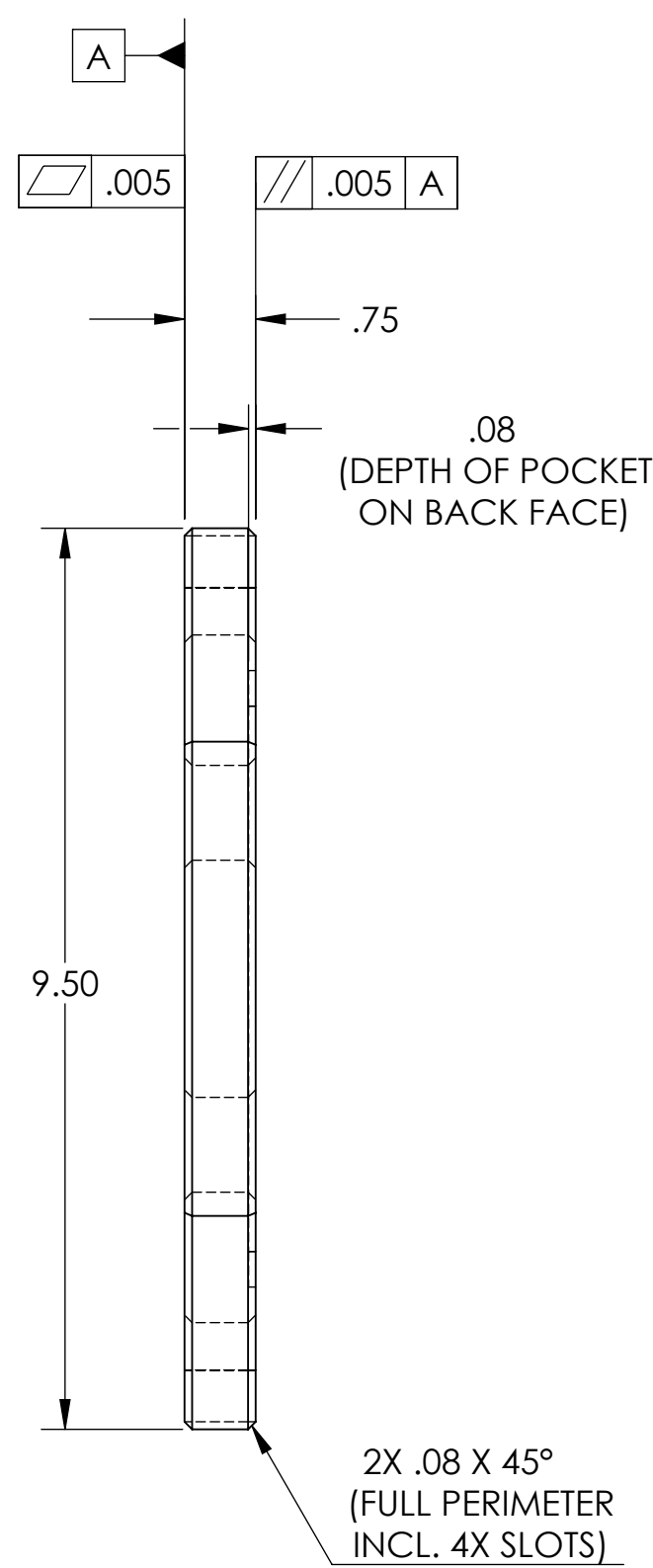
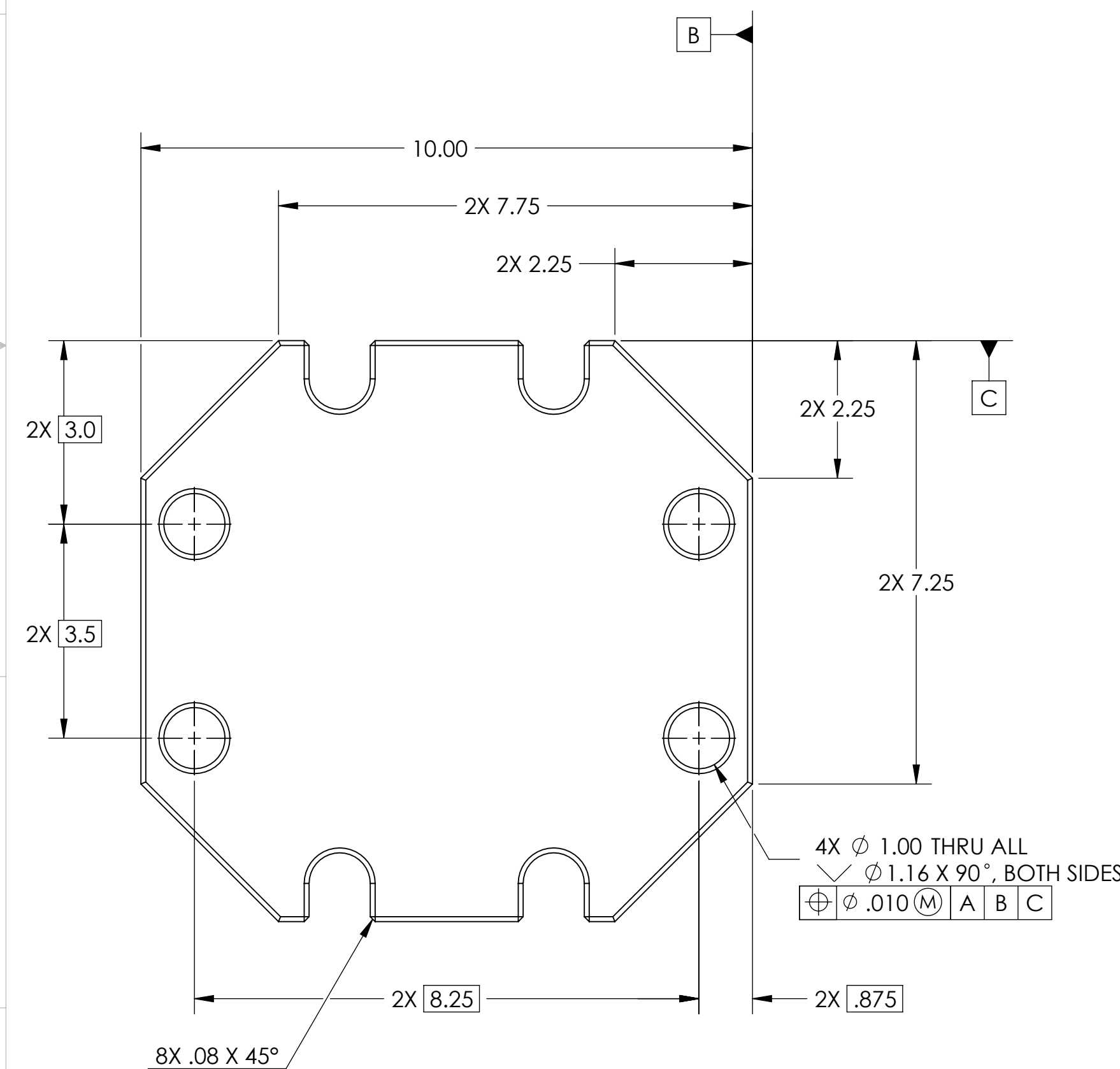
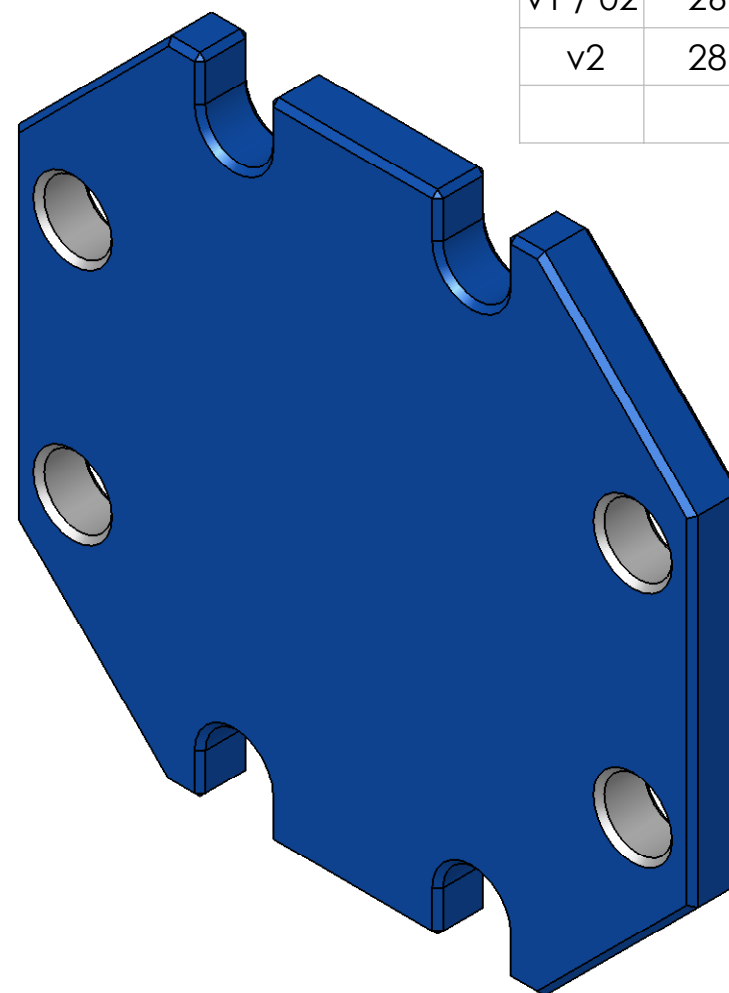


NOTES CONTINUED:

- 5. SCRIBE, ENGRAVE, OR MECHANICALLY STAMP (NO INKS OR DYES) DRAWING PART NUMBER AND REVISION ON NOTED SURFACE FOLLOWED ON THE NEXT LINE BY A THREE DIGIT SERIAL NUMBER. SERIAL NUMBERS START AT 001 FOR THE FIRST ARTICLE AND PROCEED CONSECUTIVELY. USE .07" HIGH CHARACTERS. A VIBRATORY TOOL MAY BE USED. EXAMPLE: D080459-v2, S/N 001.
- 6. REFER TO DWG. # D080462 FOR TOLERANCES FOR WELDED STRUCTURE. WHERE REASONABLE, PIECE PART TOLERANCES MAY BE LOOSENED, PROVIDED FINAL WELDMENT CONFORMS TO D080462.

REV.	DATE	DCN #	DRAWING TREE #
v1 / 02	26 Aug 2008	Initial release for LASTI prototype.	
v2	28 Aug 2009	E0900261	



Total Weight: 15.5 lbs

NOTES AND TOLERANCES: (UNLESS OTHERWISE SPECIFIED)	
1. INTERPRET DRAWING PER ASME Y14.5-1994. 2. REMOVE ALL SHARP EDGES, R.02 MIN. 3. DO NOT SCALE FROM DRAWING. 4. ALL MACHINING FLUIDS MUST BE FULLY SYNTHETIC, FULLY WATER SOLUBLE AND FREE OF SULFUR, SILICONE, AND CHLORINE.	
MATERIAL	ASTM A36 Steel
FINISH	125 µinch

CALIFORNIA INSTITUTE OF TECHNOLOGY MASSACHUSETTS INSTITUTE OF TECHNOLOGY	
SYSTEM	ADVANCED LIGO
SUB-SYSTEM	SEI
NEXT ASSY	D080462

PART NAME				HAM Crossbeam Connector HEPI Plate			
DESIGNER	A. Stein	18 Jun 2008	SIZE	DWG. NO.	REV.		
DRAFTER	A. Stein	18 Jun 2008	c	D080459	v2		
CHECKER	-		SCALE: 1:2	PROJECTION:	SHEET 1 OF 1		
APPROVAL	K. Mason	26 Aug 2009					