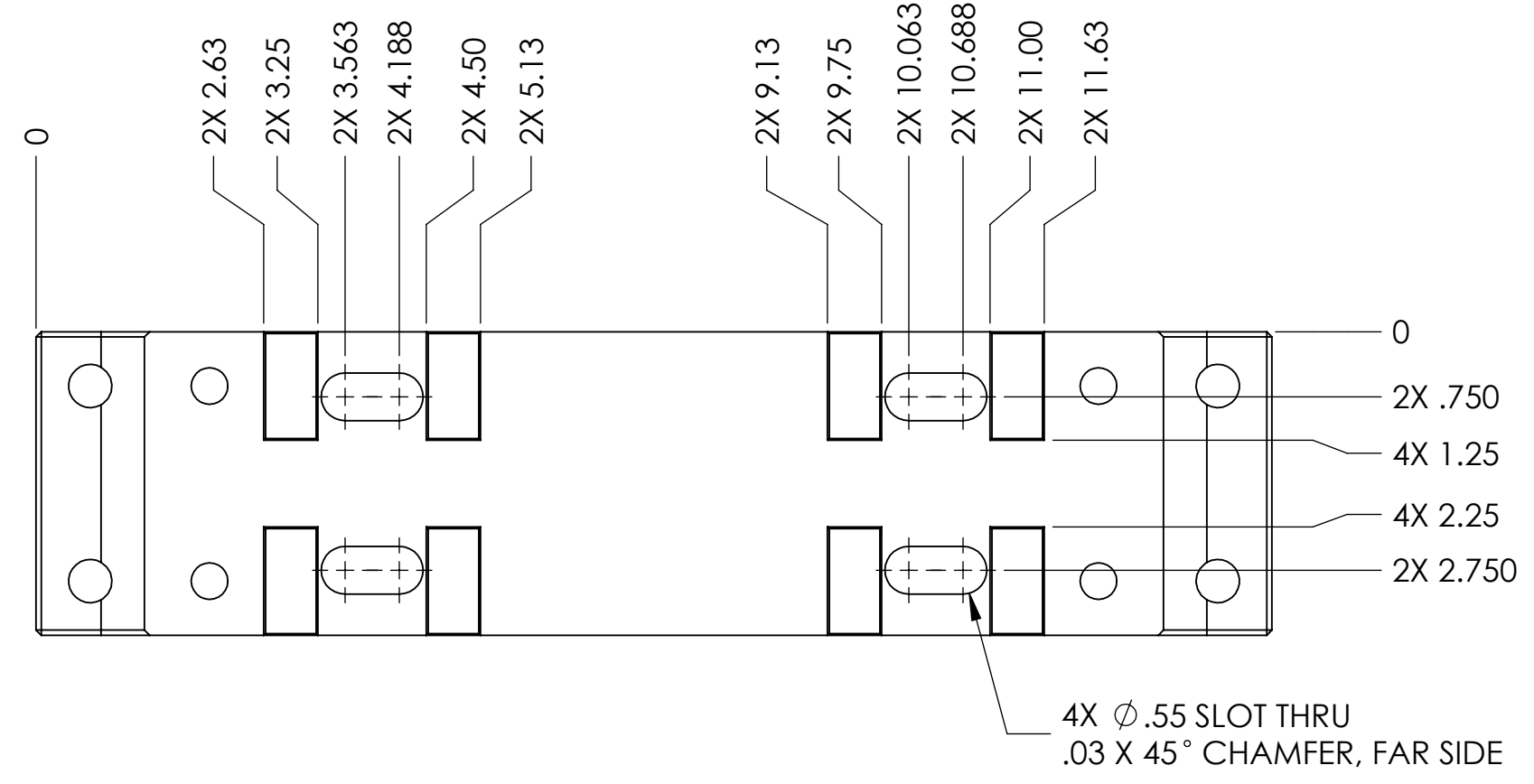
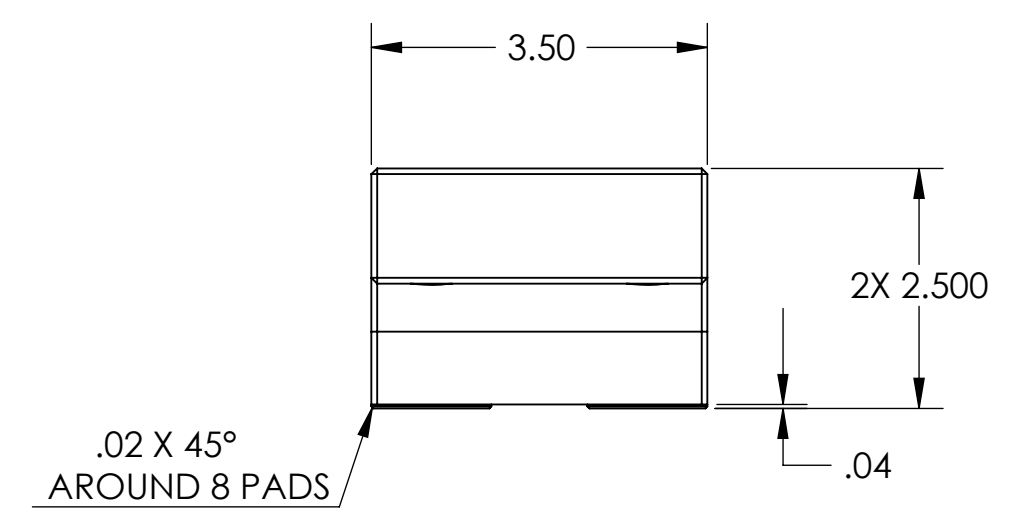
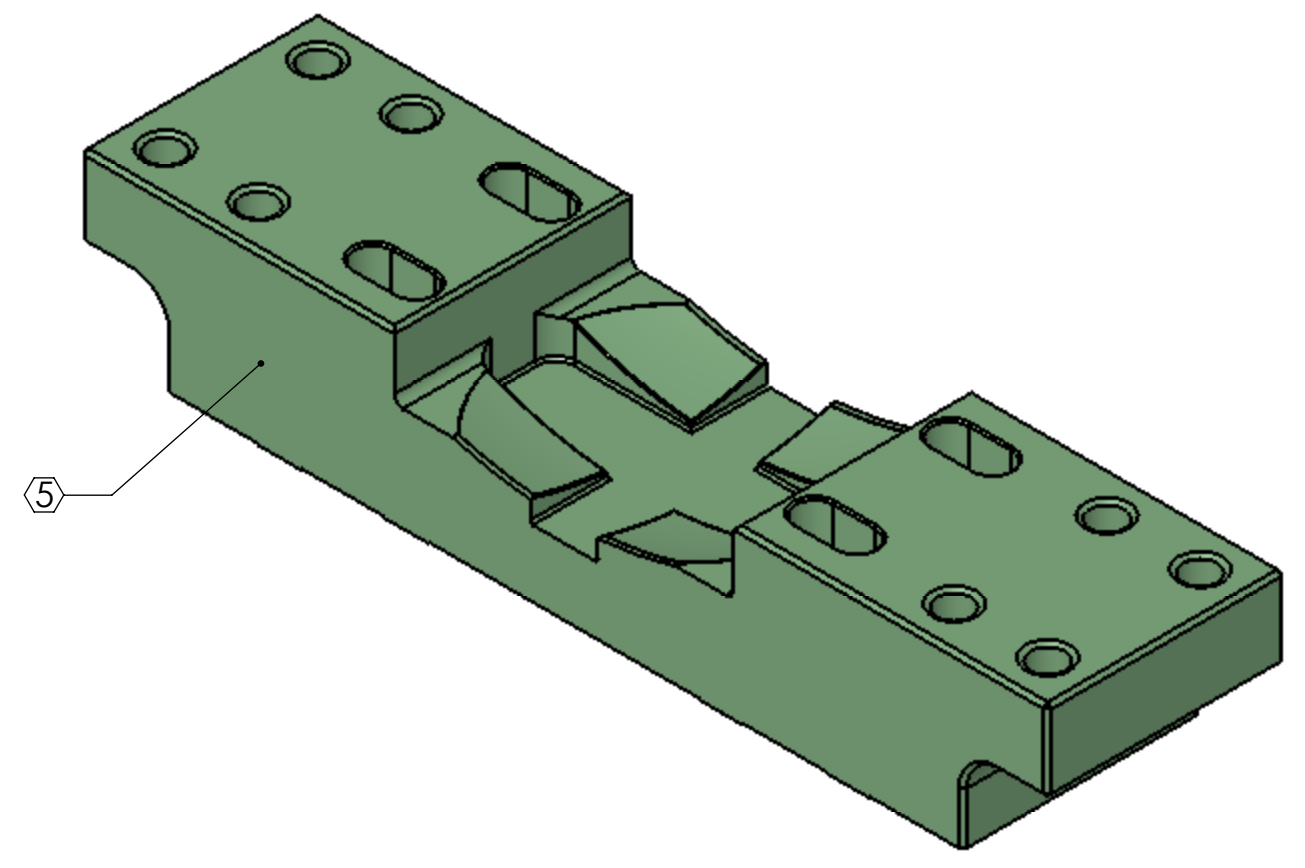
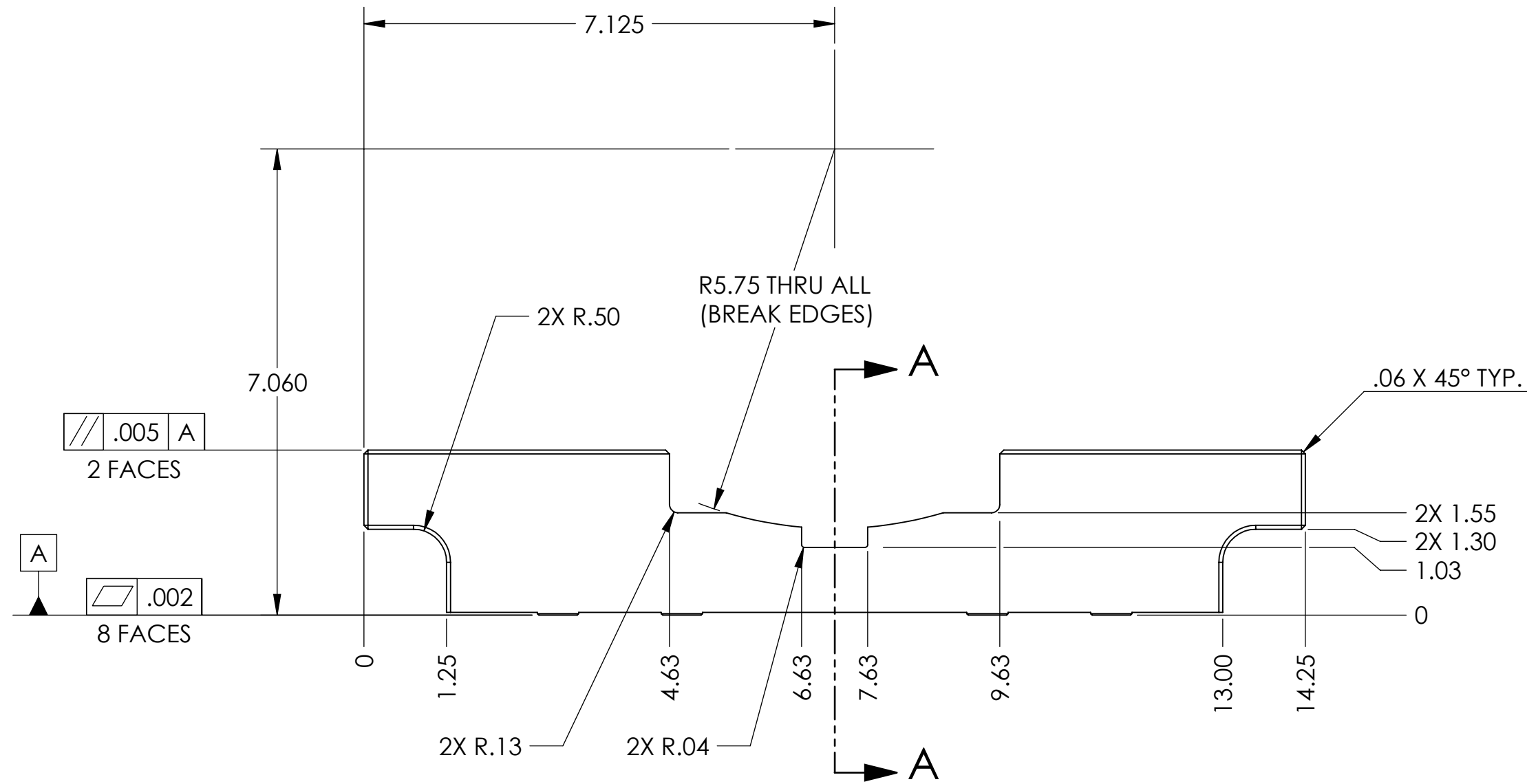
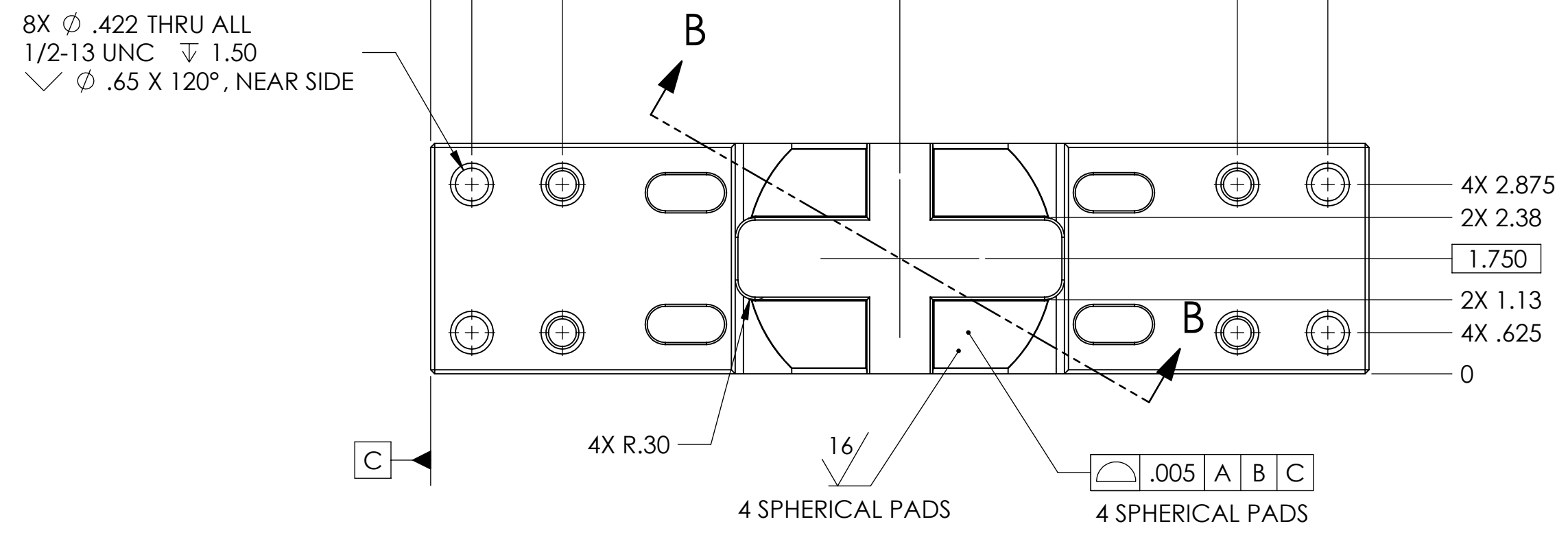
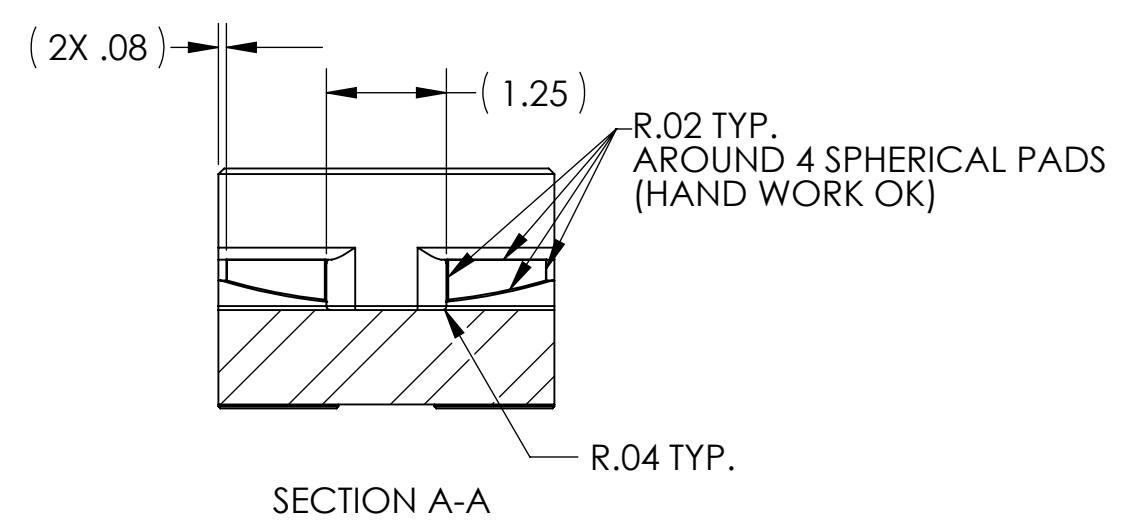
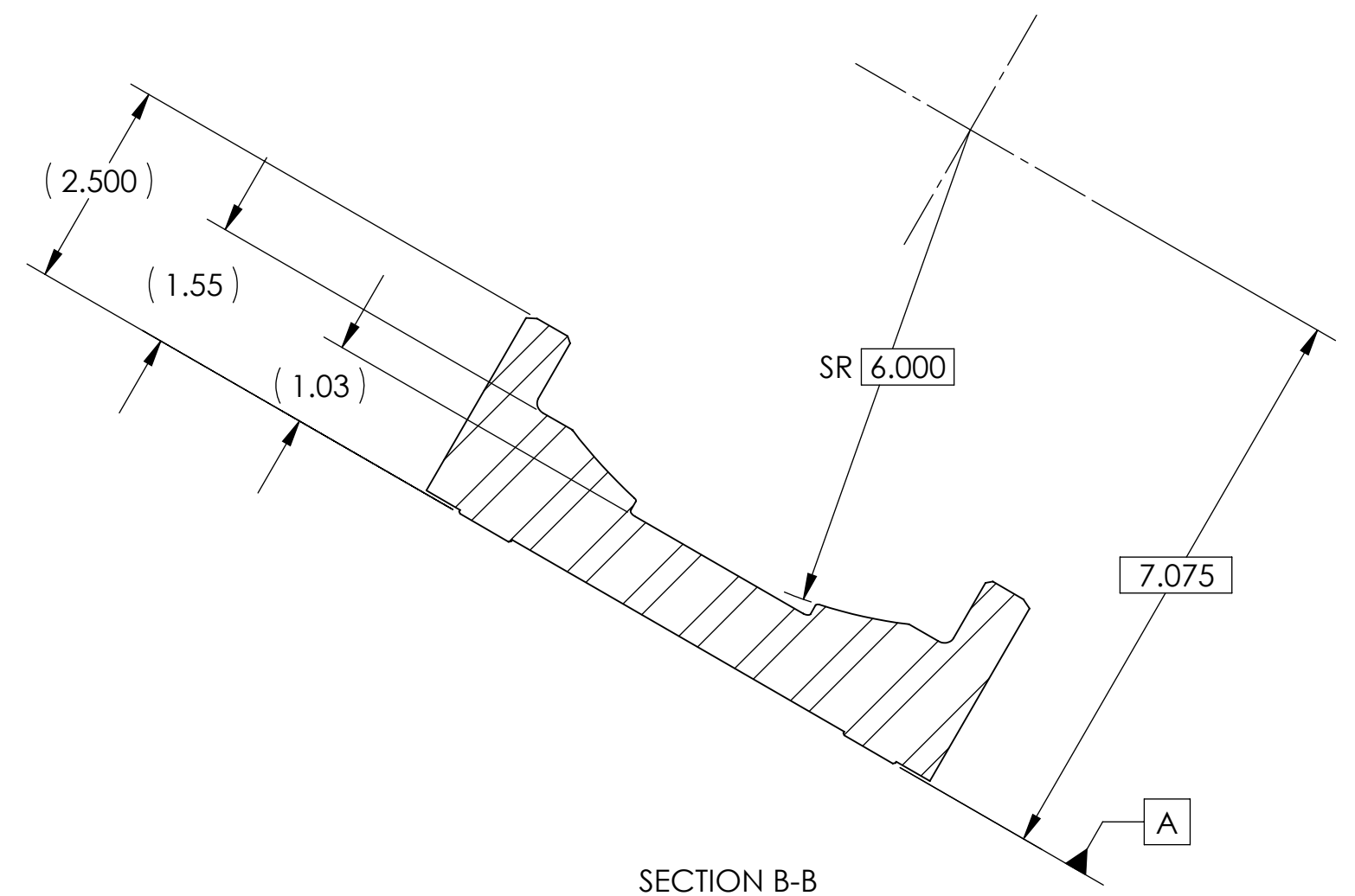


NOTES CONTINUED:
 ⑤ SCRIBE, ENGRAVE, OR MECHANICALLY STAMP (NO INKS OR DYES) DRAWING PART NUMBER AND REVISION ON NOTED SURFACE FOLLOWED ON THE NEXT LINE BY A THREE DIGIT SERIAL NUMBER. SERIAL NUMBERS START AT 001 FOR THE FIRST ARTICLE AND PROCEED CONSECUTIVELY. USE 1/2" HIGH CHARACTERS. EXAMPLE: DXXXXXX-VY, S/N 001. A VIBRATORY TOOL MAY BE USED.
 PART WEIGHS 23.5 LBS.



REV.	DATE	DCN #	DRAWING TREE #
v1 / 01	24 SEP 2008	N/A	N/A
v2	03 MAR 2010	E1000057	E1000056

NOTES AND TOLERANCES: (UNLESS OTHERWISE SPECIFIED)		CALIFORNIA INSTITUTE OF TECHNOLOGY MASSACHUSETTS INSTITUTE OF TECHNOLOGY		PART NAME	
DIMENSIONS ARE IN INCHES TOLERANCES: .XX ± .015 .XXX ± .005 ANGULAR ± 0.5°		1. INTERPRET DRAWING PER ASME Y14.5-1994. 2. REMOVE ALL SHARP EDGES, R.02 MIN. 3. DO NOT SCALE FROM DRAWING. 4. ALL MACHINING FLUIDS MUST BE FULLY SYNTHETIC, FULLY WATER SOLUBLE AND FREE OF SULFUR, SILICONE, AND CHLORINE.		Clamp Base, HAM Support Tube	
MATERIAL: 303 SSSL FINISH: 63 μinch		SYSTEM: ADVANCED LIGO SUB-SYSTEM: SEI NEXT ASSY: D080373		DESIGNER: A. STEIN DRAFTER: A. STEIN CHECKER: APPROVAL: K. MASON	18 JUL 2008 25 FEB 2010 02 MAR 2010
		SIZE: D SCALE: 1:2	DWG. NO.: D080374	REV.: v2	SHEET 1 OF 1

D080374_Clamp_Base_HAM_Support_Tube_PART FDM REV: X.015 DRAWING FDM REV: X.006