

5

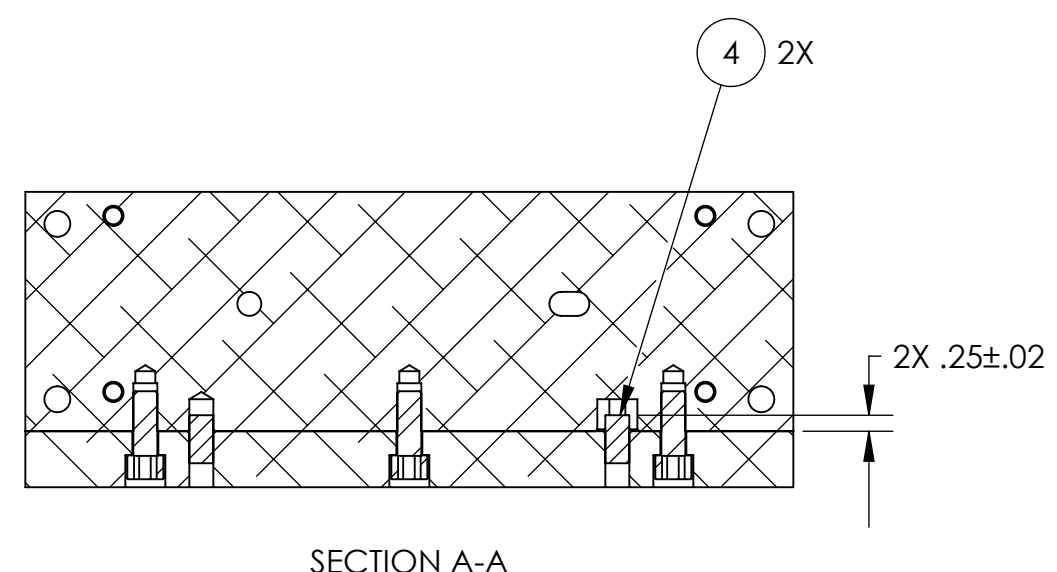
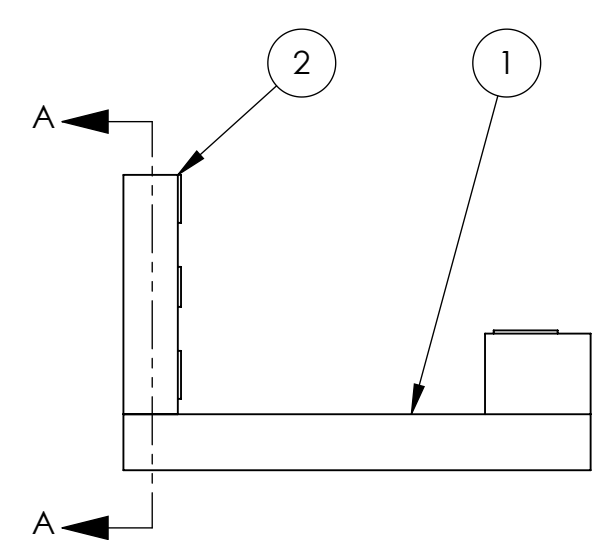
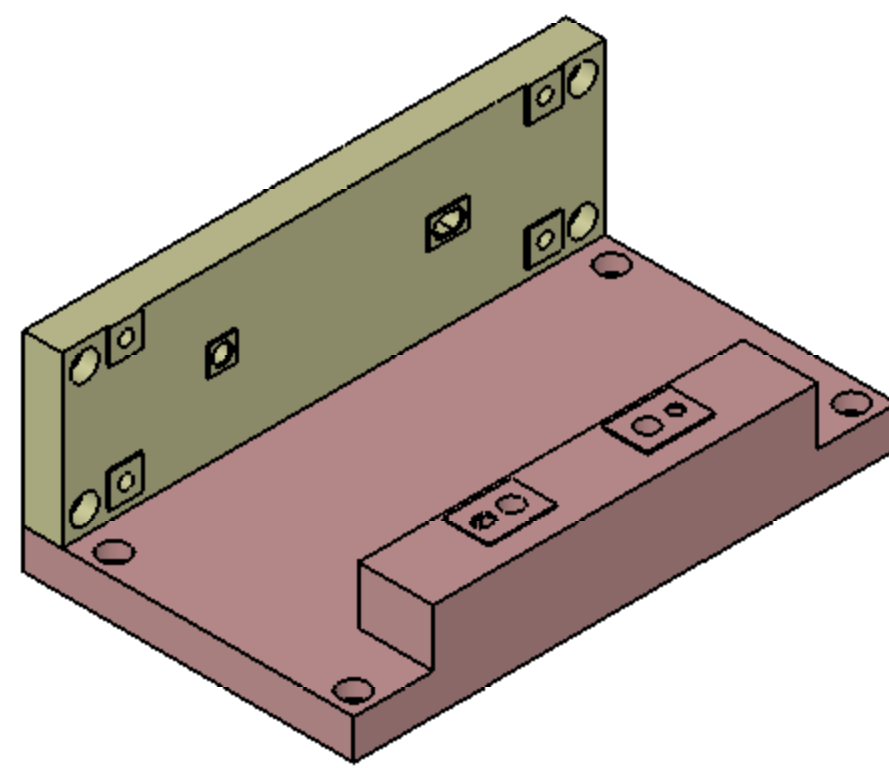
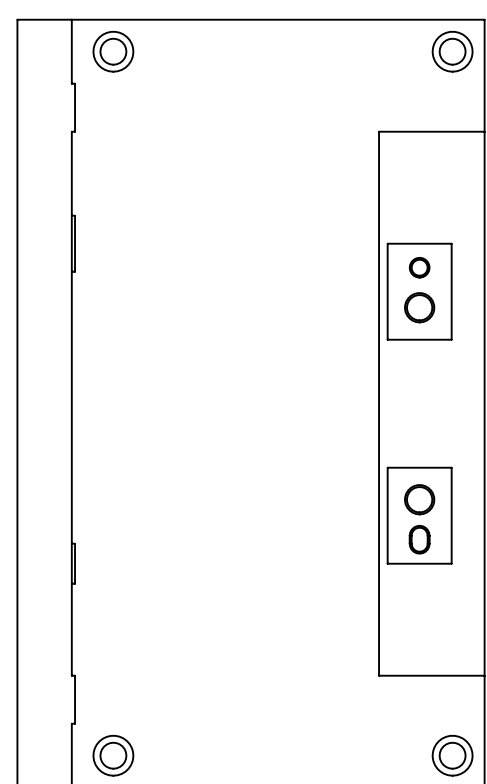
4

3

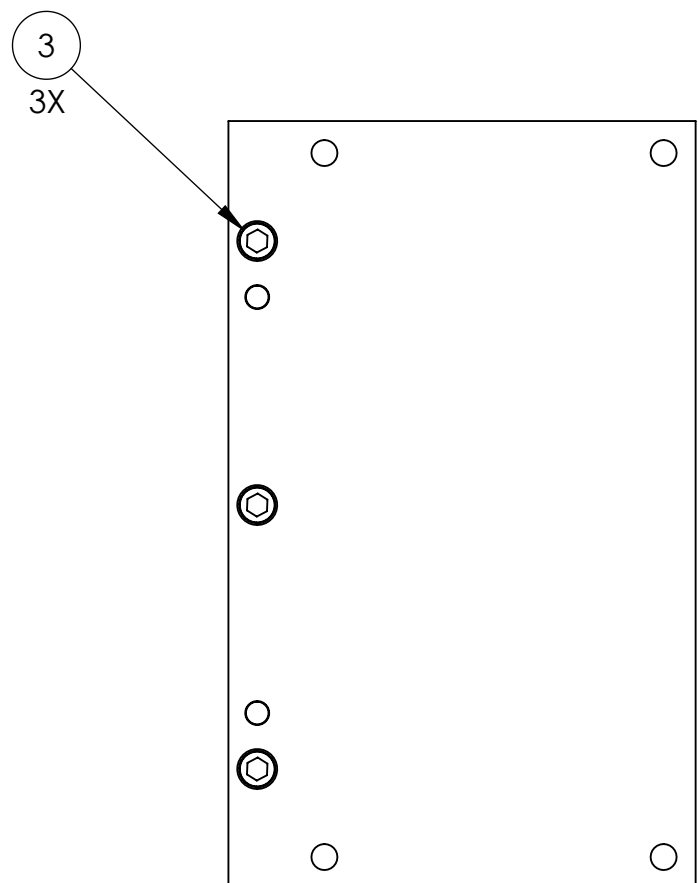
2

1

REVISION HISTORY				
REV	DATE	ECO	APPROVAL	DESCRIPTION
A	8/7/2007	1071	D. Senders	Manufacturing Release
B	01/29/2008	-	A. STEIN	Added detail. Updated BOM.



SECTION A-A



NOTES:

- SEE E070154 (ADVANCED LIGO SINGLE STAGE HAM VIBRATION ISOLATION TABLE ASSEMBLY PROCEDURE) FOR ADDITIONAL ASSEMBLY NOTES AND REQUIREMENTS.
- INSTALL HELI-COIL INSERTS AND PRESS IN DOWEL PINS BEFORE BEGINNING ASSEMBLY.

BILL OF MATERIALS

ITEM NO.	QTY/ASM	PART NUMBER	DESCRIPTION	CONFIG DESCRIPTION	MATERIAL
1	1	D071316	ACTUATOR SET-UP FIXTURE, BASE PLATE	-	6061-T6
2	1	D071317	ACTUATOR SET-UP FIXTURE, SIDE PLATE	-	6061-T6
3	3	HOLOKROME 78098	SHCS	3/8"-16x1.0"	18-8 SS
4	2	MCMMASTER 90145A622	DOWEL PIN	3/8"x.75"	18-8 SS

PRIOR P/N: p06109-497-1 APPROVALS: D. Senders 8/8/07 MANUFACTURING: C. Danaher 8/8/07 MATL: See BOM FINISH: See BOM		DIMENSIONS ARE IN INCHES DECIMAL TOLERANCES: .XX ±.015 .XXX ±.005 ANG TOL: ± 1° SURFACE ROUGHNESS: 63 INTERNAL AND EXTERNAL INTERSECTIONS SHALL BE UNIFORMLY FINISHED WITH A CHAMFER .005/.010 X 45° OR RADIUS .005/.010. CHAMFER ALL THREADED HOLES 110% OF MAJOR DIAMETER X 45°		High Precision Devices 1668 Valtec Lane, Suite C, Boulder, Colorado 80301 Phone: (303) 447-2558 Fax: (303) 447-2548 Web Site: www.hpd-online.com DESCRIPTION: ASM, FIXTURE, ACTUATOR SET-UP P/N: D071497 CONFIG DESC: - FILE NAME: D071497-B Asm, Fixture, Actuator Set-Up FOLDER:	
SIZE: C SCALE: 1:3 SHEET 1 OF 1		DRAWN BY: Dave Senders DATE PRINTED: 2/26/2008		REV: B	

D

C

B

A