

5

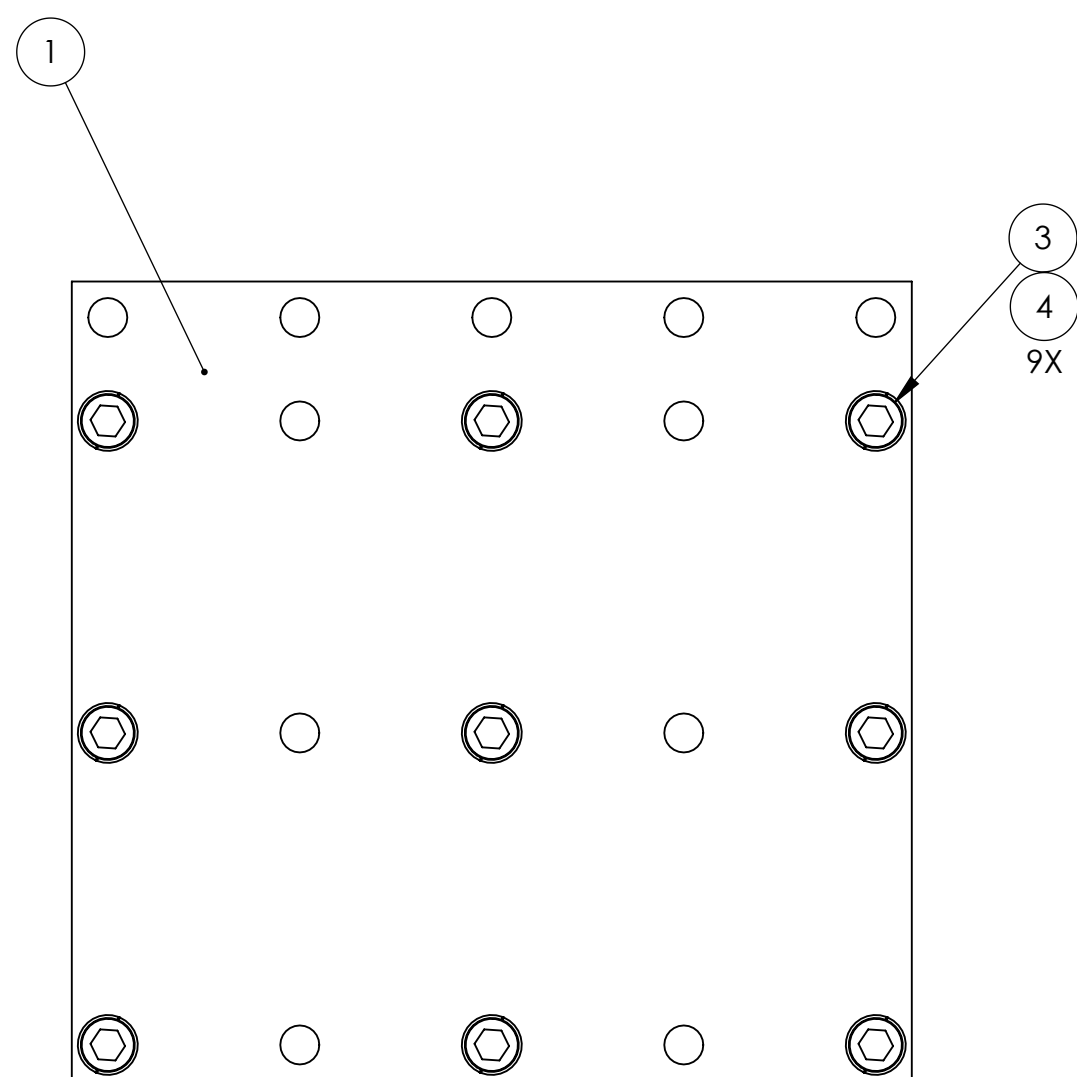
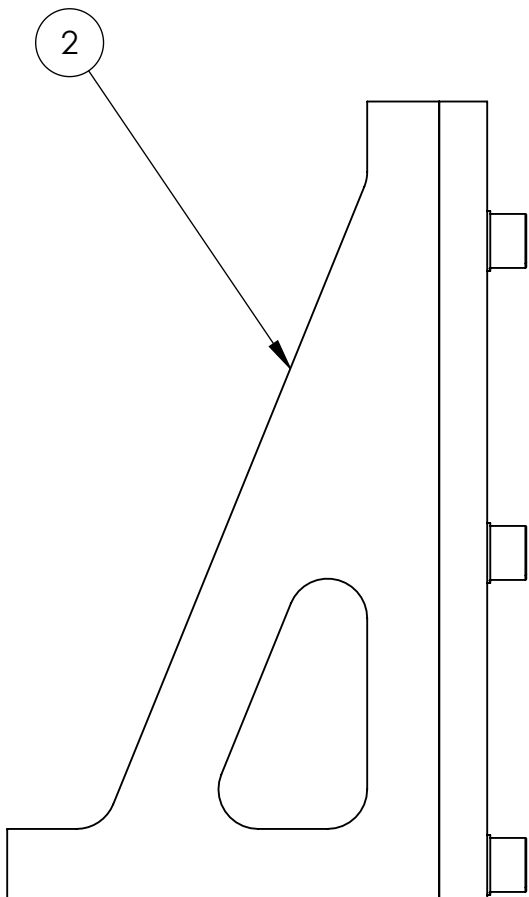
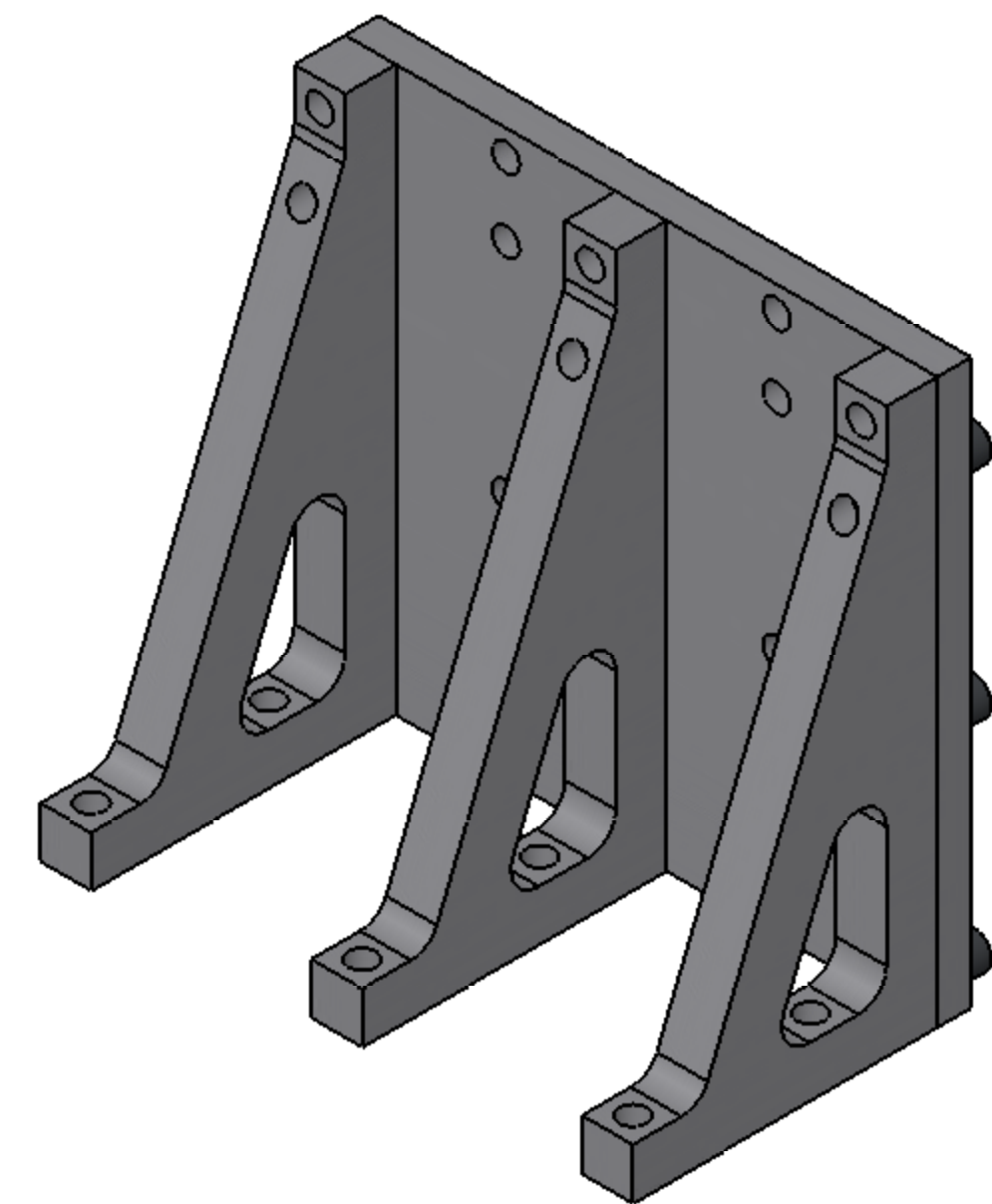
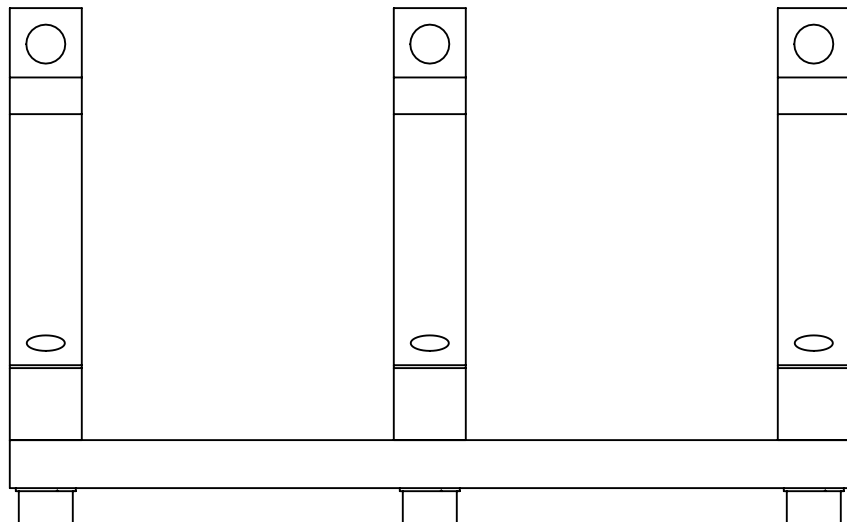
4

3

2

1

REVISION HISTORY				
REV	DATE	ECO	APPROVAL	DESCRIPTION
B	6-15-07	1064	Dan Bryce	Manufacturing Release
C	02/13/2008	-	A. STEIN	Updated BOM.



NOTES:

1. SEE E070154 (ADVANCED LIGO SINGLE STAGE HAM VIBRATION ISOLATION TABLE ASSEMBLY PROCEDURE) FOR ADDITIONAL ASSEMBLY NOTES AND REQUIREMENTS.
2. ASSEMBLE ON A FLAT SURFACE TO ENSURE CO-PLANARITY OF PARTS. MAY WANT TO USE SURROGATE STAGE 0 BASE (D071001) TO ENSURE PROPER BOLT SPACING.

BILL OF MATERIALS					
ITEM NO.	QTY.	PART NUMBER	DESCRIPTION	CONFIG DESCRIPTION	MATERIAL
1	1	D071300	PLATE, SHIPPING	-	6061
2	3	D071301	ANGLE BRACE, SHIPPING	-	6061
3	9	HOLOKROME 78100	SHCS	3/8"-16x1.25"	18-8 SS
4	9	UCC WFV-38	VENTED WASHER	.39"IDx.625"OD	18-8 SS

PRIOR P/N: p06109-700-0 APPROVALS: Dan Bryce DATE: 6-15-07 MANUFACTURING: C. Danaher DATE: 6-15-07 MATL: See BOM FINISH: See BOM		UNLESS OTHERWISE SPECIFIED: DIMENSIONS ARE IN INCHES DECIMAL TOLERANCES: .XX ±.015 .XXX ±.005 ANG TOL: ± 1° SURFACE ROUGHNESS: 63 INTERNAL AND EXTERNAL INTERSECTIONS SHALL BE UNIFORMLY FINISHED WITH A CHAMFER .005/.010 X 45° OR RADIUS .005/.010. CHAMFER ALL THREADED HOLES 110% OF MAJOR DIAMETER X 45°		High Precision Devices 1668 Valtec Lane, Suite C, Boulder, Colorado 80301 Phone: (303) 447-2558 Fax: (303) 447-2548 Web Site: www.hpd-online.com DESCRIPTION: ASM, SHIPPING BRACE P/N: D071490 CONFIG DESC: - FILE NAME: D071490-C Asm, Shipping Brace FOLDER: SIZE: C SCALE: 1:2 DRAWN BY: Dan Bryce REV: C SHEET 1 OF 1 DATE PRINTED: 2/13/2008	
---	--	--	--	---	--

D

C

B

A