

5

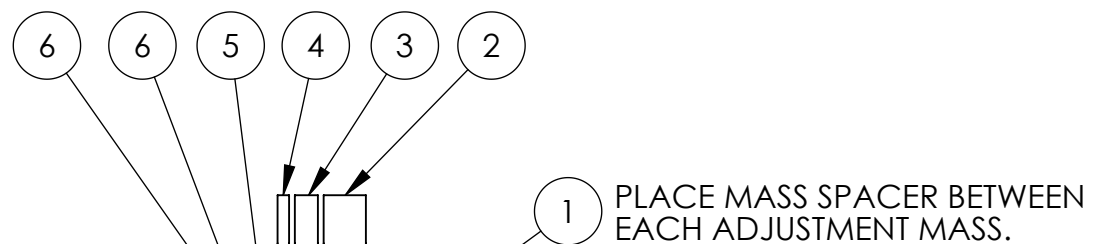
4

3

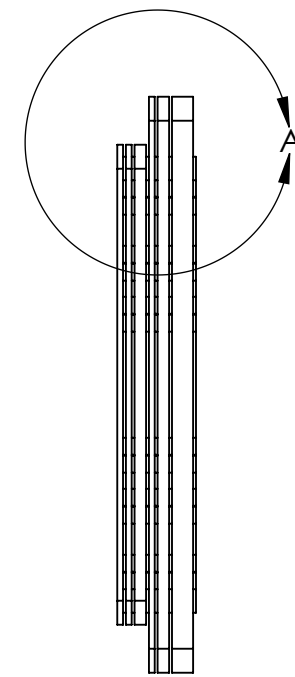
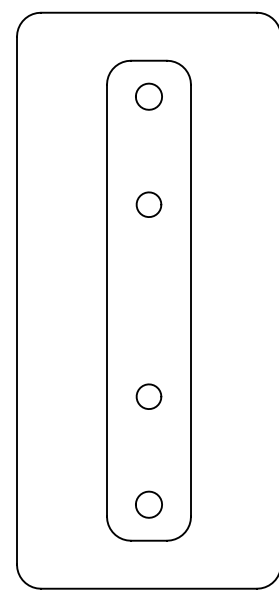
2

1

REVISION HISTORY				
REV	DATE	ECO	APPROVAL	DESCRIPTION
B	6/15/2007	1064	J. Waterman	Manufacturing Release
C	02/12/2008	-	A. STEIN	Changed combination of Masses. Updated BOM.



DETAIL A  
SCALE 1 : 2



TOTAL MASS: 17.9 lbs

BILL OF MATERIALS

ITEM NO.	TRIM/ QTY.	PART NUMBER	DESCRIPTION	CONFIG DESCRIPTION	MASS (lbs)	MATERIAL
1	6	D071201	MASS SPACER	-	0.10	304 SS
2	1	D071200	ADJUSTMENT MASS	.44" THICK (MED)	8.3	304 SS
3	1	D071200	ADJUSTMENT MASS	.24" THICK (MED)	4.5	304 SS
4	1	D071200	ADJUSTMENT MASS	.12" THICK (MED)	2.3	304 SS
5	1	D071200	ADJUSTMENT MASS	.24" THICK (FINE)	1.1	304 SS
6	2	D071200	ADJUSTMENT MASS	.12" THICK (FINE)	0.6	304 SS

NOTES:

- SEE E070154 (ADVANCED LIGO SINGLE STAGE HAM VIBRATION ISOLATION TABLE ASSEMBLY PROCEDURE) FOR ADDITIONAL ASSEMBLY NOTES AND REQUIREMENTS.
- MASSES SHOULD BE SELECTED AS NEEDED TO PROPERLY ALIGN AND BALANCED STAGE 1.
- IF MOUNTED TO KEEL ASM, USE 1/2"-13x5.0" HHCS (MCMMASTER 92240A732) TO FASTEN.

UNLESS OTHERWISE SPECIFIED:

DIMENSIONS ARE IN INCHES  
 DECIMAL TOLERANCES:  
 .XX ±.015 .XXX ±.005  
 ANG TOL: ± 1° SURFACE ROUGHNESS: 63

INTERNAL AND EXTERNAL INTERSECTIONS SHALL BE UNIFORMLY FINISHED WITH A CHAMFER .005/.010 X 45° OR RADIUS .005/.010.  
 CHAMFER ALL THREADED HOLES 110% OF MAJOR DIAMETER X 45°

THIS PRINT & ITS RELATED MODEL ARE THE DOCUMENTATION OF RECORD. UNLESS OTHERWISE SPECIFIED, ALL FEATURES MUST CONFORM TO .010 TOTAL WIDE PROFILE OF A SURFACE. INTERPRET DWG PER ASME Y14.5M 1994

PRIOR P/N:	<b>p06109-480-0</b>
APPROVALS	DATE
ENGINEERING J. Waterman	6/15/07
MANUFACTURING	
QUALITY C. Danaher	6/15/07
MAT'L:	<b>See BOM</b>
FINISH:	<b>See BOM</b>

**High Precision Devices**

1668 Valtrec Lane, Suite C, Boulder, Colorado 80301  
 Phone: (303) 447-2558 Fax: (303) 447-2548 Web Site: www.hpd-online.com

DESCRIPTION: **ASM, ADJUSTMENT MASSES**

P/N: **D071480** CONFIG DESC: **TRIM (SAMPLE)**

FILE NAME: D071480-C Asm, Adjustment Masses

FOLDER:

SIZE	SCALE: <b>1:4</b>	DRAWN BY: <b>Jonas Waterman</b>	REV
<b>B</b>	SHEET <b>1</b> OF <b>3</b>	DATE PRINTED: <b>2/12/2008</b>	<b>C</b>

5

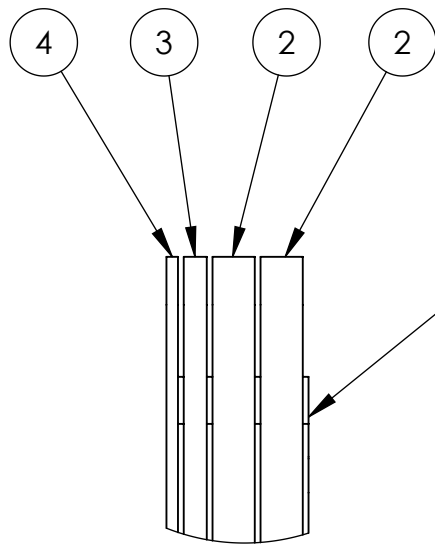
4

3

2

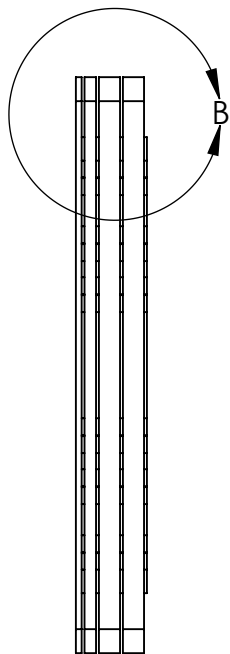
1

REVISION HISTORY				
REV	DATE	ECO	APPROVAL	DESCRIPTION
-	-	-	-	See Sheet 1

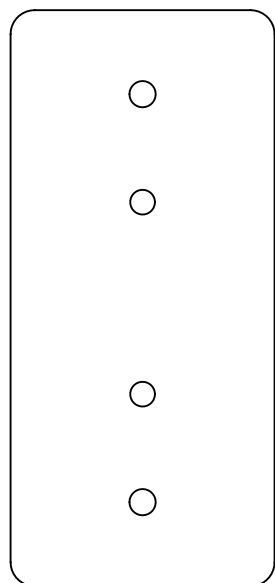


1 PLACE MASS SPACER BETWEEN EACH ADJUSTMENT MASS.

DETAIL B  
SCALE 1 : 2



TOTAL MASS: 23.7 lbs



BILL OF MATERIALS

ITEM NO.	BALLAST/ QTY.	PART NUMBER	DESCRIPTION	CONFIG DESCRIPTION	MASS (lbs)	MATERIAL
1	4	D071201	MASS SPACER	-	0.10	304 SS
2	2	D071200	ADJUSTMENT MASS	.44" THICK (MED)	8.3	304 SS
3	1	D071200	ADJUSTMENT MASS	.24" THICK (MED)	4.5	304 SS
4	1	D071200	ADJUSTMENT MASS	.12" THICK (MED)	2.3	304 SS

NOTES:

- SEE E070154 (ADVANCED LIGO SINGLE STAGE HAM VIBRATION ISOLATION TABLE ASSEMBLY PROCEDURE) FOR ADDITIONAL ASSEMBLY NOTES AND REQUIREMENTS.
- MASSES SHOULD BE SELECTED AS NEEDED TO PROPERLY ALIGN AND BALANCED STAGE 1.
- IF MOUNTED TO KEEL ASM, USE 1/2"-13x5.0" HHCS (MCMMASTER 92240A732) TO FASTEN.

UNLESS OTHERWISE SPECIFIED:

DIMENSIONS ARE IN INCHES  
DECIMAL TOLERANCES:  
.XX ±.015 .XXX ±.005  
ANG TOL: ± 1° SURFACE ROUGHNESS: 63

INTERNAL AND EXTERNAL INTERSECTIONS SHALL BE UNIFORMLY FINISHED WITH A CHAMFER .005/.010 X 45° OR RADIUS .005/.010.  
CHAMFER ALL THREADED HOLES 110% OF MAJOR DIAMETER X 45°

THIS PRINT & ITS RELATED MODEL ARE THE DOCUMENTATION OF RECORD. UNLESS OTHERWISE SPECIFIED, ALL FEATURES MUST CONFORM TO .010 TOTAL WIDE PROFILE OF A SURFACE. INTERPRET DWG PER ASME Y14.5M 1994

**High Precision Devices**

1668 Valtrec Lane, Suite C, Boulder, Colorado 80301  
Phone: (303) 447-2558 Fax: (303) 447-2548 Web Site: www.hpd-online.com

DESCRIPTION: **ASM, ADJUSTMENT MASSES**

P/N: **D071480** CONFIG DESC: **BALLAST (SAMPLE)**

FILE NAME: D071480-C Asm, Adjustment Masses

FOLDER:

SIZE	SCALE: <b>1:4</b>	DRAWN BY: <b>Jonas Waterman</b>	REV
<b>B</b>	SHEET <b>2</b> OF <b>3</b>	DATE PRINTED: <b>2/12/2008</b>	<b>C</b>

PRIOR P/N:	<b>p06109-480-1</b>
APPROVALS	DATE
ENGINEERING J. Waterman	6/15/07
MANUFACTURING	
QUALITY C. Danaher	6/15/07
MAT'L:	<b>See BOM</b>
FINISH:	<b>See BOM</b>

5

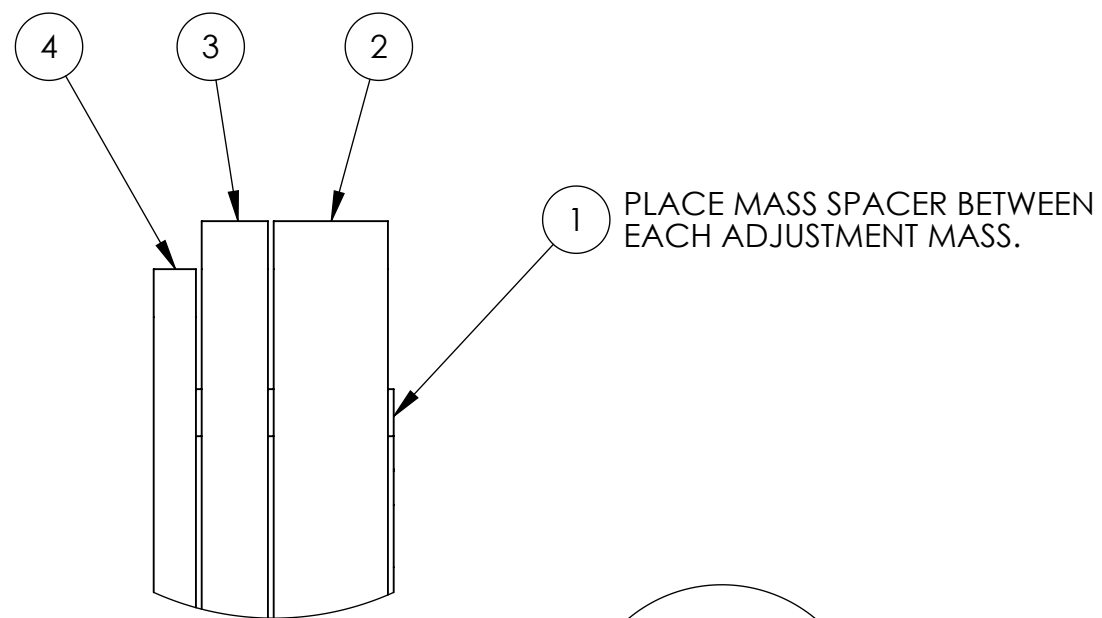
4

3

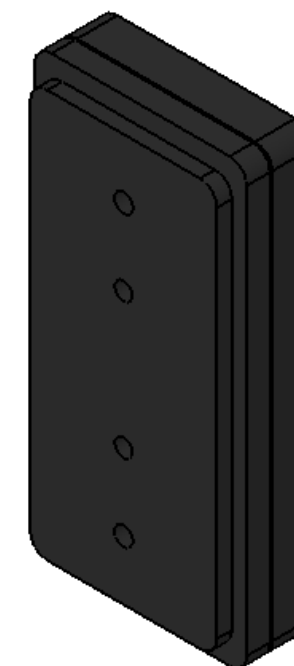
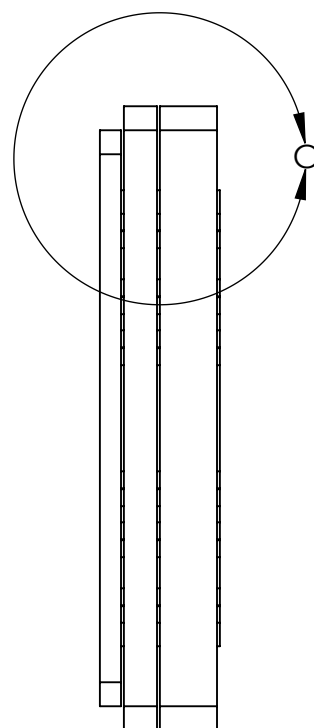
2

1

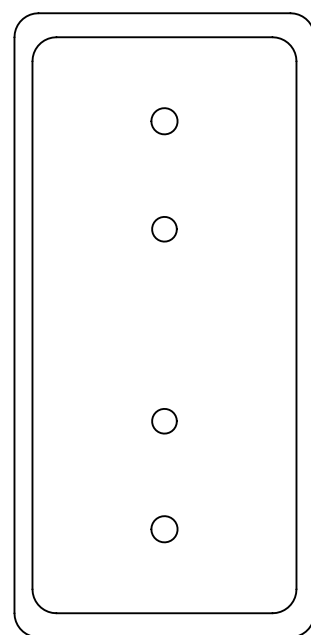
REVISION HISTORY				
REV	DATE	ECO	APPROVAL	DESCRIPTION
-	-	-	-	See Sheet 1



DETAIL C  
SCALE 1 : 2



TOTAL MASS: 52.1 lbs



BILL OF MATERIALS

ITEM NO.	EXTRA PAYLOAD/ QTY.	PART NUMBER	DESCRIPTION	CONFIG DESCRIPTION	MASS (lbs)	MATERIAL
1	3	D071201	MASS SPACER	-	0.10	304 SS
2	1	D071200	ADJUSTMENT MASS	1.19" THICK (COARSE)	27.6	304 SS
3	1	D071200	ADJUSTMENT MASS	.69" THICK (COARSE)	16.0	304 SS
4	1	D071200	ADJUSTMENT MASS	.44" THICK (MED)	8.3	304 SS

NOTES:

- SEE E070154 (ADVANCED LIGO SINGLE STAGE HAM VIBRATION ISOLATION TABLE ASSEMBLY PROCEDURE) FOR ADDITIONAL ASSEMBLY NOTES AND REQUIREMENTS.
- MASSES SHOULD BE SELECTED AS NEEDED TO PROPERLY ALIGN AND BALANCED STAGE 1.
- IF MOUNTED TO KEEL ASM, USE 1/2"-13x5.0" HHCS (MCMMASTER 92240A732) TO FASTEN.

UNLESS OTHERWISE SPECIFIED:

DIMENSIONS ARE IN INCHES  
DECIMAL TOLERANCES:  
.XX ±.015 .XXX ±.005  
ANG TOL: ± 1° SURFACE ROUGHNESS: 63

INTERNAL AND EXTERNAL INTERSECTIONS SHALL BE UNIFORMLY FINISHED WITH A CHAMFER .005/.010 X 45° OR RADIUS .005/.010.  
CHAMFER ALL THREADED HOLES 110% OF MAJOR DIAMETER X 45°

THIS PRINT & ITS RELATED MODEL ARE THE DOCUMENTATION OF RECORD. UNLESS OTHERWISE SPECIFIED, ALL FEATURES MUST CONFORM TO .010 TOTAL WIDE PROFILE OF A SURFACE. INTERPRET DWG PER ASME Y14.5M 1994

**High Precision Devices**

1668 Valtrec Lane, Suite C, Boulder, Colorado 80301  
Phone: (303) 447-2558 Fax: (303) 447-2548 Web Site: www.hpd-online.com

DESCRIPTION: **ASM, ADJUSTMENT MASSES**

P/N: **D071480** CONFIG: **EXTRA PAYLOAD (SAMPLE)**

FILE NAME: D071480-C Asm, Adjustment Masses

FOLDER:

SIZE	SCALE: <b>1:4</b>	DRAWN BY: <b>Jonas Waterman</b>	REV
<b>B</b>	SHEET <b>3</b> OF <b>3</b>	DATE PRINTED: <b>2/12/2008</b>	<b>C</b>

PRIOR P/N:	<b>p06109-480-2</b>
APPROVALS	DATE
ENGINEERING J. Waterman	6/15/07
MANUFACTURING	
QUALITY C. Danaher	6/15/07
MAT'L:	<b>See BOM</b>
FINISH:	<b>See BOM</b>