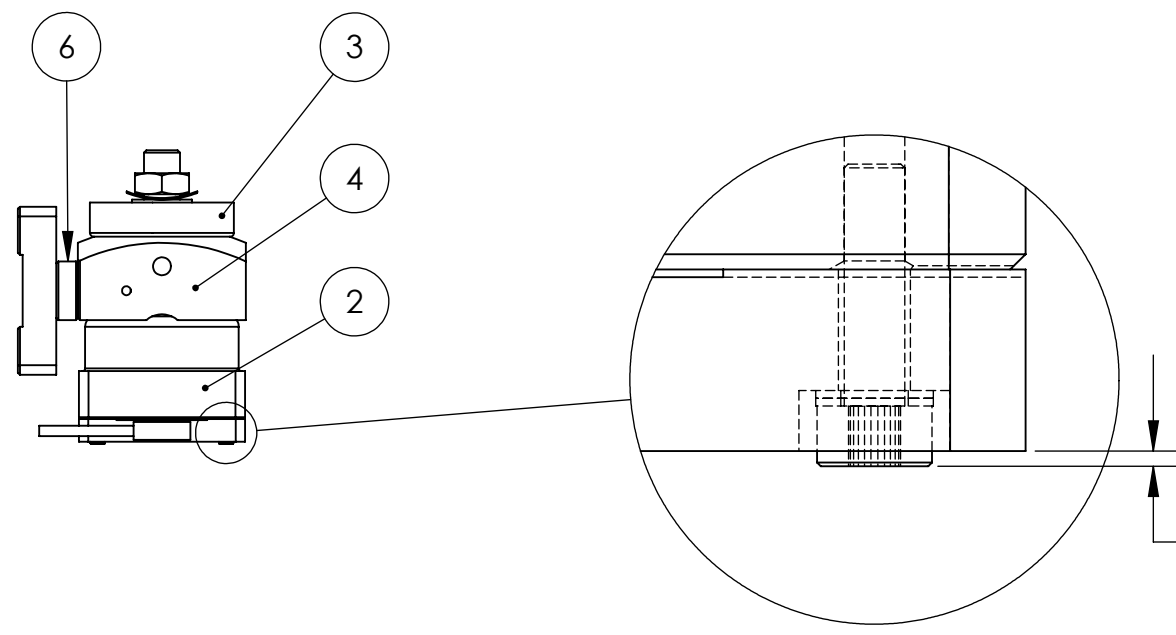
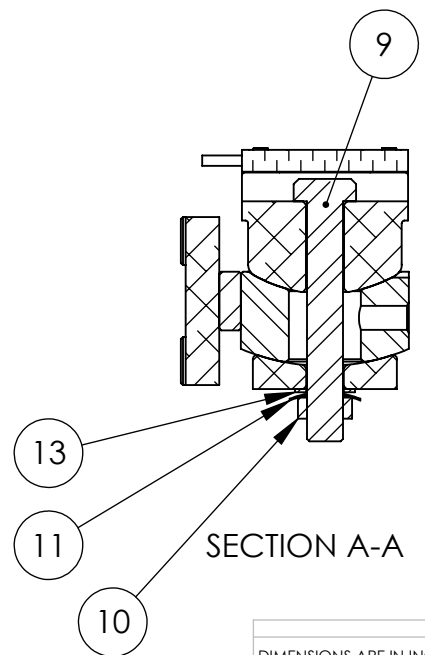
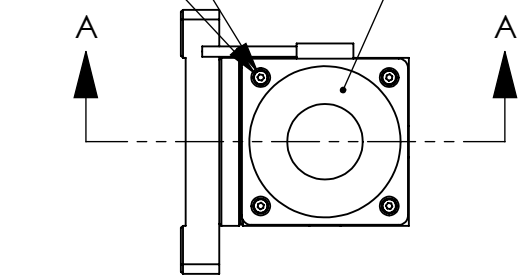
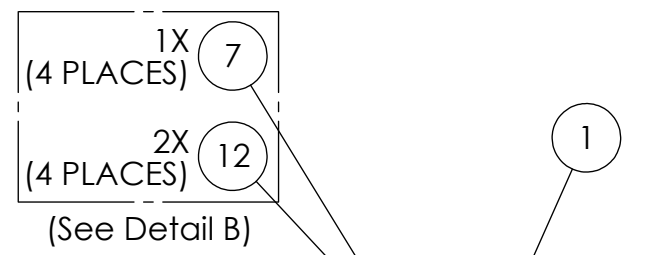
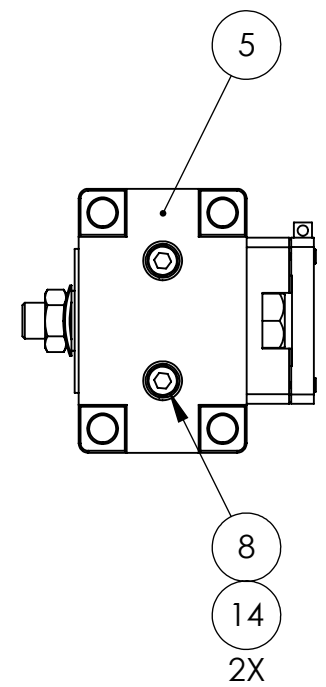


NOTES CONTINUED:

- 5. Refer to LIGO-E0900216 for detailed assembly instructions.
- 6. Weight of finished assembly: 0.8 lbs

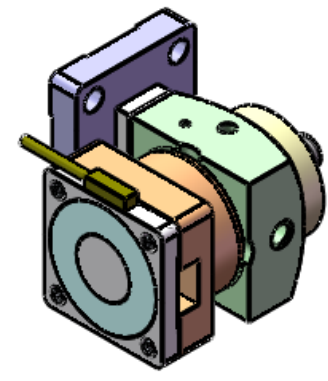
REV.	DATE	DCN #	DRAWING TREE #
v1 / C	24 JAN 2008	N/A	N/A
v2	19 JAN 2010	E1000001	T0900305
-	-	-	-

D071464_Asm-Position_Sensor, PART PDM REV: V1-012, DRAWING PDM REV: X-002



DETAIL B
SCALE 4 : 1

.020 TYP.
Screw heads stick above probe surface, to prevent probe/target contact.



HORIZONTAL Configuration

ITEM NO.	PART NUMBER	DESCRIPTION	SIZE / TYPE	MATERIAL	Horizontal /QTY.
14	UCC WFV-10	Flat Washer, Vented, #10, 0.195 ID, 0.354 OD, 0.032 THK	#10 (.20"x.35")	18-8 SS	2
13	MCMaster_98017A199	Flat Washer, 3/8"	.390"IDx.625"ODx.032"	18-8 SS	1
12	MCMaster_93574A161	Precision Shim	3/64" (.09"x.15"x.010")	18-8 SS	8
11	MCMaster_9716K53	Curved Spring Washer, 3/8"	3/8" (.40"x.74"x.016")	301 SS	1
10	D0900209	Hex Nut, Custom Ag-Plated, 3/8"-16	3/8"-16, Ag-Plated	18-8 SS	1
9	MCMaster_92198A634	HHCS, 3/8"-16x2.5"	3/8"-16x2.5"	18-8 SS	1
8	HOLOKROME_79024	SHCS, #10-32x.75"	#10-32x.75"	18-8 SS	2
7	MCMaster_91292A008	SHCS, M2-.4x8mm	M2-.4x8mm	18-8 SS	4
6	D071170	Sensor Head Standoff, Horiz	-	6061-T6 Al	1
5	D071164	Sensor Head Base Plate	-	6061-T6 Al	1
4	D071163	Sensor Head Mount	-	6061-T6 Al	1
3	D071162	Sensor Head Washer	-	6061-T6 Al	1
2	D071161	Sensor Head Base	-	6061-T6 Al	1
1	ADE_2822-V	Capacitive Position Sensor	20mm PROBE, VACUUM-COMPATIBLE	Ceramic Porcelain	1

PARTS LIST

DIMENSIONS ARE IN INCHES
TOLERANCES:
.XX ± .015
.XXX ± .005
ANGULAR ± 0.5°

NOTES AND TOLERANCES: (UNLESS OTHERWISE SPECIFIED)
1. INTERPRET DRAWING PER ASME Y14.5-1994.
2. REMOVE ALL SHARP EDGES, R.02 MIN.
3. DO NOT SCALE FROM DRAWING.
4. ALL MACHINING FLUIDS MUST BE FULLY SYNTHETIC, FULLY WATER SOLUBLE AND FREE OF SULFUR, SILICONE, AND CHLORINE.

MATERIAL See BOM
FINISH See BOM

LIGO CALIFORNIA INSTITUTE OF TECHNOLOGY
MASSACHUSETTS INSTITUTE OF TECHNOLOGY

SYSTEM ADVANCED LIGO SUB-SYSTEM SEI
NEXT ASSY D0900124

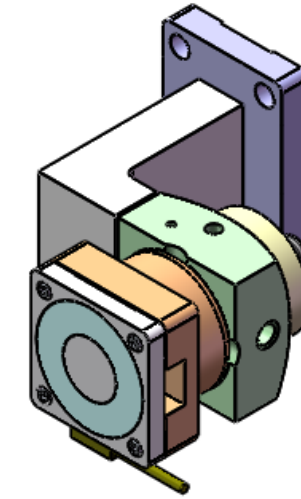
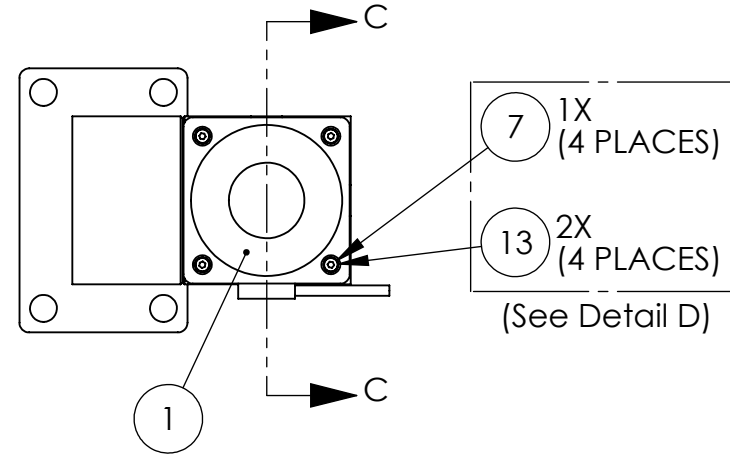
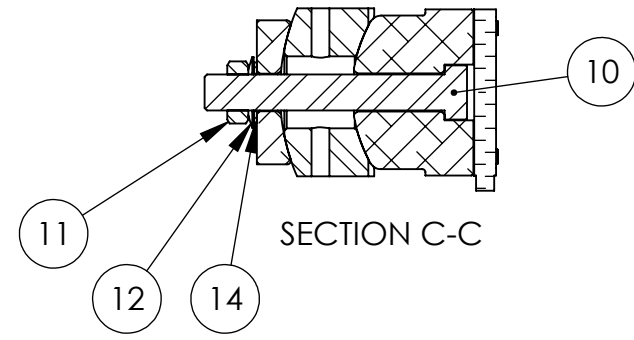
PART NAME
Asm, Position Sensor

DESIGNER Andy Stein 29 JAN 2009
DRAFTER Andy Stein 04 JAN 2010
CHECKER
APPROVAL Ken Mason 19 JAN 2010

SIZE DWG. NO. **B D071464**
REV. v2

SCALE: 1:2 PROJECTION: SHEET 1 OF 2

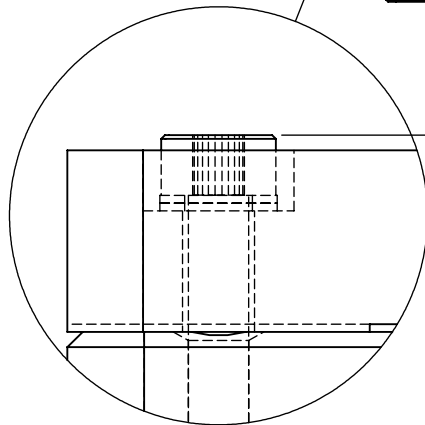
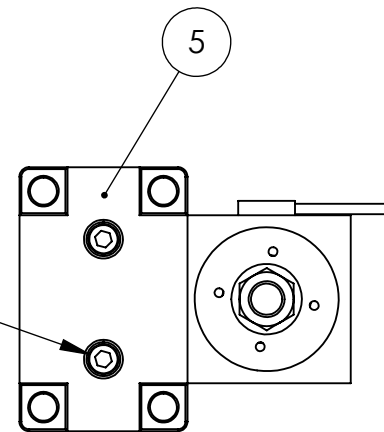
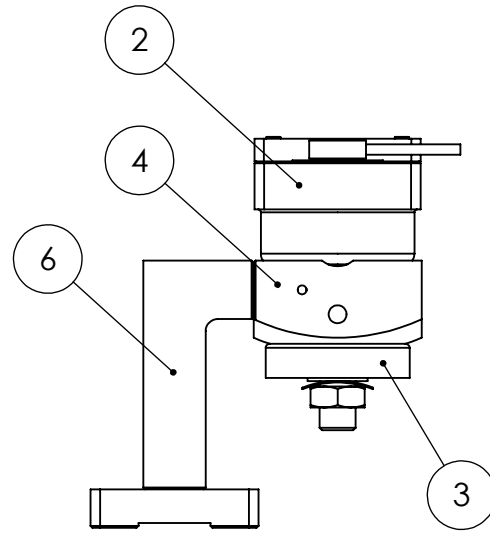
D071464_Asm-Position_Sensor, PART PDM REV: V1-012, DRAWING PDM REV: X-002



VERTICAL Configuration

15	UCC WFV-10	Flat Washer, Vented, #10, 0.195 ID, 0.354 OD, 0.032 THK	#10 (.20"x.35")	18-8 SS	4
14	MCMaster_98017A199	Flat Washer, 3/8"	.390"IDx.625"ODx.032"	18-8 SS	1
13	MCMaster_93574A161	Precision Shim	3/64" (.09"x.15"x.010")	18-8 SS	8
12	MCMaster_9716K53	Curved Spring Washer, 3/8"	3/8" (.40"x.74"x.016")	301 SS	1
11	D0900209	Hex Nut, Custom Ag-Plated, 3/8"-16	3/8"-16, Ag-Plated	18-8 SS	1
10	MCMaster_92198A634	HHCS, 3/8"-16x2.5"	3/8"-16x2.5"	18-8 SS	1
9	HOLOKROME_79030	SHCS, #10-32x1.25"	#10-32x1.25"	18-8 SS	2
8	HOLOKROME_79020	SHCS, #10-32x.50"	#10-32x.50"	18-8 SS	2
7	MCMaster_91292A008	SHCS, M2-.4x8mm	M2-.4x8mm	18-8 SS	4
6	D071175	Sensor Head Bracket, Vert	-	6061-T6 Al	1
5	D071164	Sensor Head Base Plate	-	6061-T6 Al	1
4	D071163	Sensor Head Mount	-	6061-T6 Al	1
3	D071162	Sensor Head Washer	-	6061-T6 Al	1
2	D071161	Sensor Head Base	-	6061-T6 Al	1
1	ADE_2822-V	Capacitive Position Sensor	20mm PROBE, VACUUM-COMPATIBLE	Ceramic Porcelain	1
ITEM NO.	PART NUMBER	DESCRIPTION	SIZE / TYPE	MATERIAL	Vertical/ QTY.

PARTS LIST



.020 TYP.
Screw heads stick above probe surface, to prevent probe/target contact.

DETAIL D
SCALE 4 : 1

CALIFORNIA INSTITUTE OF TECHNOLOGY
 MASSACHUSETTS INSTITUTE OF TECHNOLOGY

SIZE DWG. NO.	D071464	REV.	v2
SCALE: 1:2	PROJECTION:		SHEET 2 OF 2