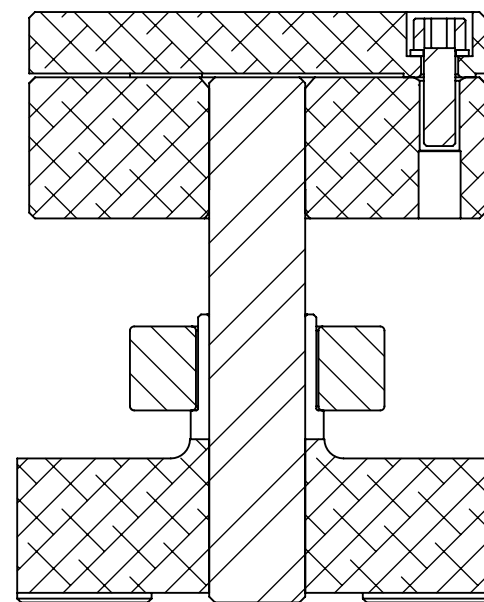
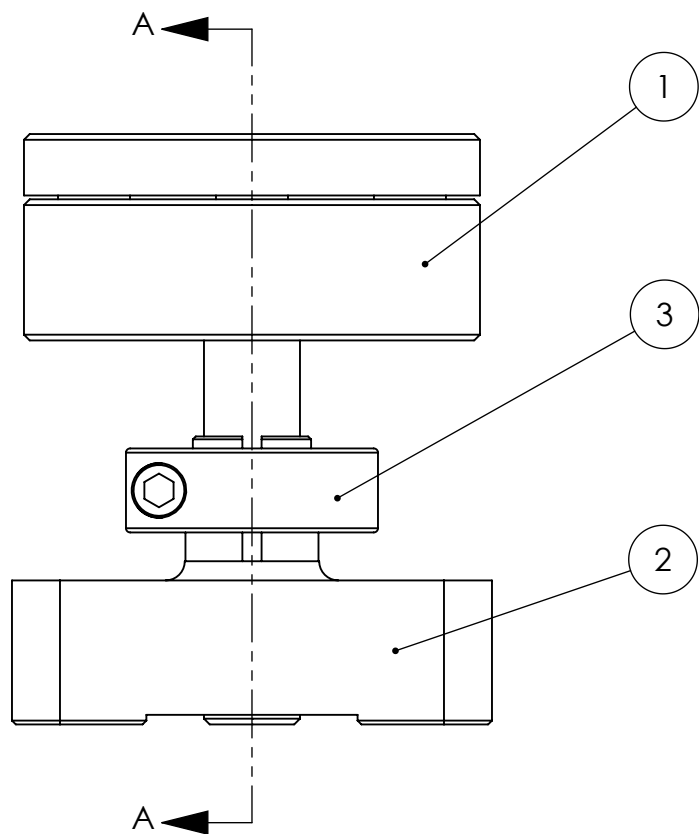
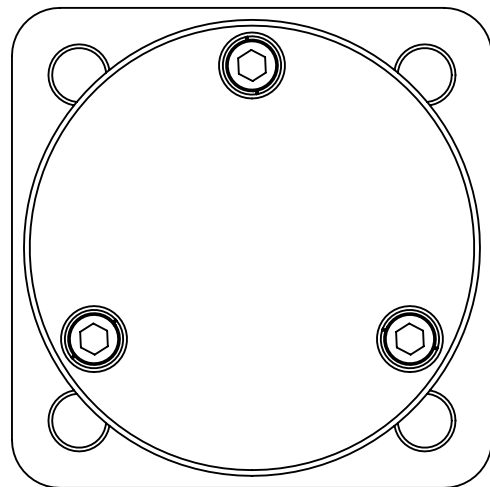


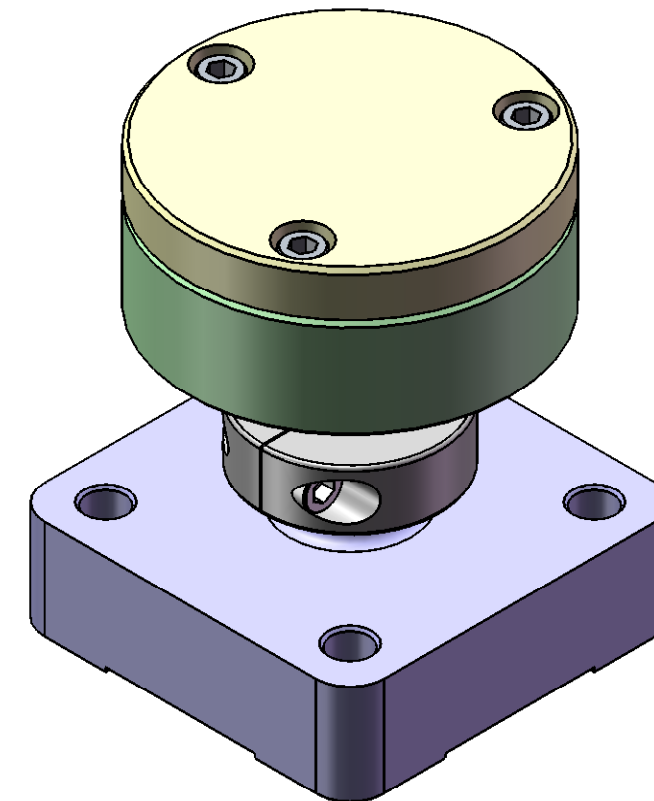
NOTES CONTINUED:

- 5. Refer to LIGO-E0900216 for detailed assembly instructions.
- 6. Sensor Target surface must be free of scratches. Handle with care.
- 7. Weight of finished assembly: 1.1 lbs



SECTION A-A

REV.	DATE	DCN #	DRAWING TREE #
v1 / E	28 JAN 2008	N/A	N/A
v2	13 JAN 2010	E1000001	T0900305
-	-	-	-



ITEM NO.	PART NUMBER	DESCRIPTION	SIZE / TYPE	MATERIAL	Default /QTY.
3	D0900208	Shaft Collar, 5/8" Bore, 1-Piece, Custom Ag-Plated Screws	5/8"IDx1.31"OD	316 SS	1
2	D071160	Sensor Target Mount	-	6061-T6 Al	1
1	D071462	Asm, Position Sensor Target Face	-	See BOM	1

PARTS LIST

DIMENSIONS ARE IN INCHES TOLERANCES: .XX ± .015 .XXX ± .005 ANGULAR ± 0.5°		NOTES AND TOLERANCES: (UNLESS OTHERWISE SPECIFIED) 1. INTERPRET DRAWING PER ASME Y14.5-1994. 2. REMOVE ALL SHARP EDGES, R.02 MIN. 3. DO NOT SCALE FROM DRAWING. 4. ALL MACHINING FLUIDS MUST BE FULLY SYNTHETIC, FULLY WATER SOLUBLE AND FREE OF SULFUR, SILICONE, AND CHLORINE.		LIGO CALIFORNIA INSTITUTE OF TECHNOLOGY MASSACHUSETTS INSTITUTE OF TECHNOLOGY		PART NAME Asm, Position Sensor Target	
MATERIAL See BOM		FINISH See BOM		NEXT ASSY D0900124		DESIGNER Andy Stein 29 JAN 2009 DRAFTER Andy Stein 04 JAN 2010 CHECKER Ken Mason 13 JAN 2010 APPROVAL	
SYSTEM ADVANCED LIGO SUB-SYSTEM SEI				SIZE DWG. NO. B D071463		REV. v2	
				SCALE: 1:1		PROJECTION:  SHEET 1 OF 1	

D071463\_Asm-Position\_Sensor\_Target, PART PDM REV: V1-005, DRAWING PDM REV: X-001