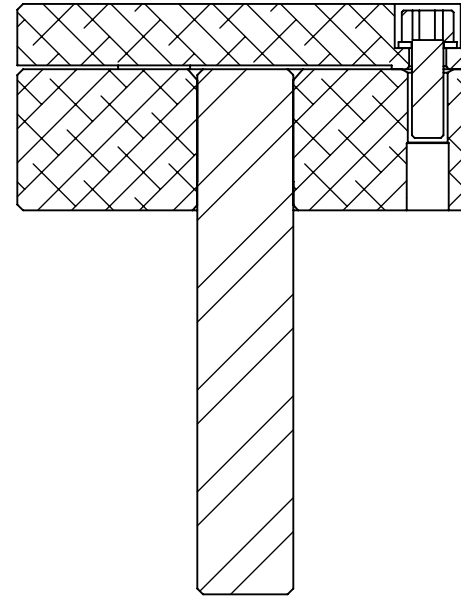
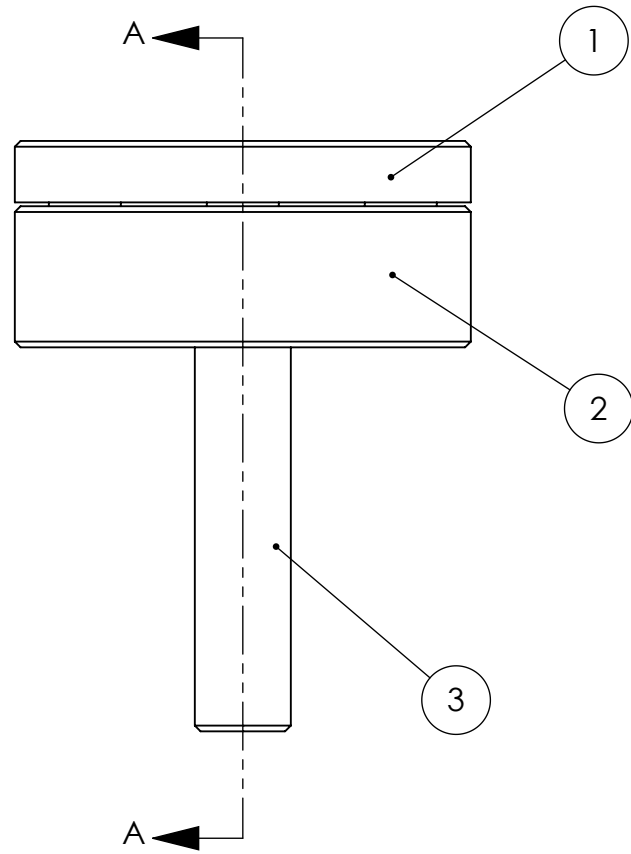
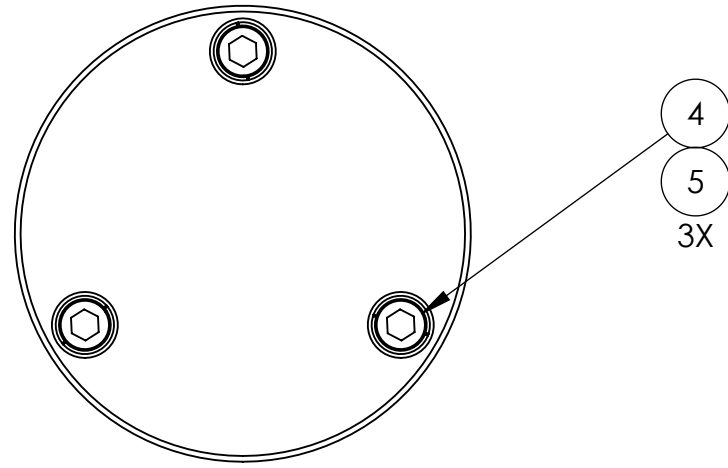
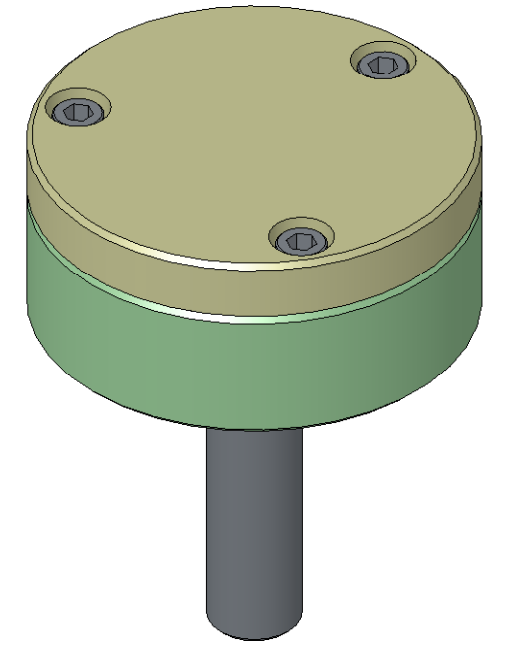


D071462_Asm-Position_Sensor_Target_Face, PART PDM REV: V1-012, DRAWING PDM REV: X-001

NOTES CONTINUED:
 5. Refer to LIGO-E0900216 for detailed assembly instructions.
 6. Sensor Target surface must be free of scratches. Handle with care.
 7. Weight of finished assembly: 0.60 lbs



SECTION A-A



REV.	DATE	DCN #	DRAWING TREE #
v1 / D	28 JAN 2008	N/A	N/A
v2	13 JAN 2010	E1000001	T0900305
-	-	-	-

ITEM NO.	PART NUMBER	DESCRIPTION	SIZE / TYPE	MATERIAL	Default /QTY.
5	UCC_WFV-08	Vented Washer, #8	#8 (.17"x.30")	18-8 SS	3
4	HOLOKROME_78028	SHCS, #8-32x.50"	#8-32x.50"	18-8 SS	3
3	D071167	Sensor Target Post	-	304 SS	1
2	D071166	Sensor Target Body	-	6061-T6 Al	1
1	D071165	Sensor Target	-	1100-H14 Al	1

PARTS LIST

NOTES AND TOLERANCES: (UNLESS OTHERWISE SPECIFIED)
 1. INTERPRET DRAWING PER ASME Y14.5-1994.
 2. REMOVE ALL SHARP EDGES, R.02 MIN.
 3. DO NOT SCALE FROM DRAWING.
 4. ALL MACHINING FLUIDS MUST BE FULLY SYNTHETIC, FULLY WATER SOLUBLE AND FREE OF SULFUR, SILICONE, AND CHLORINE.

DIMENSIONS ARE IN INCHES
 TOLERANCES:
 .XX ± .015
 .XXX ± .005
 ANGULAR ± 0.5°

MATERIAL See BOM
 FINISH See BOM

LIGO CALIFORNIA INSTITUTE OF TECHNOLOGY
 MASSACHUSETTS INSTITUTE OF TECHNOLOGY

SYSTEM ADVANCED LIGO SUB-SYSTEM SEI
 NEXT ASSY D071463

PART NAME
Asm, Position Sensor Target Face

DESIGNER Andy Stein 6 FEB 2009
 DRAFTER Andy Stein 04 JAN 2010
 CHECKER Ken Mason 13 JAN 2010
 APPROVAL

SIZE DWG. NO. B D071462
 REV. v2

SCALE: 1:1 PROJECTION: SHEET 1 OF 1