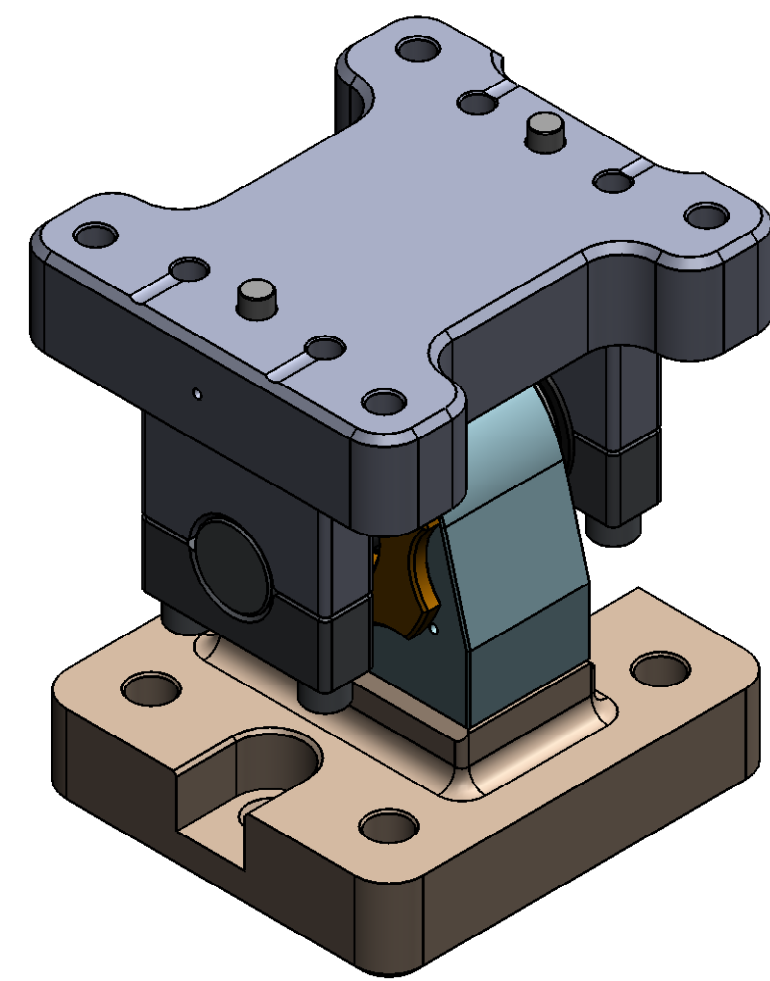
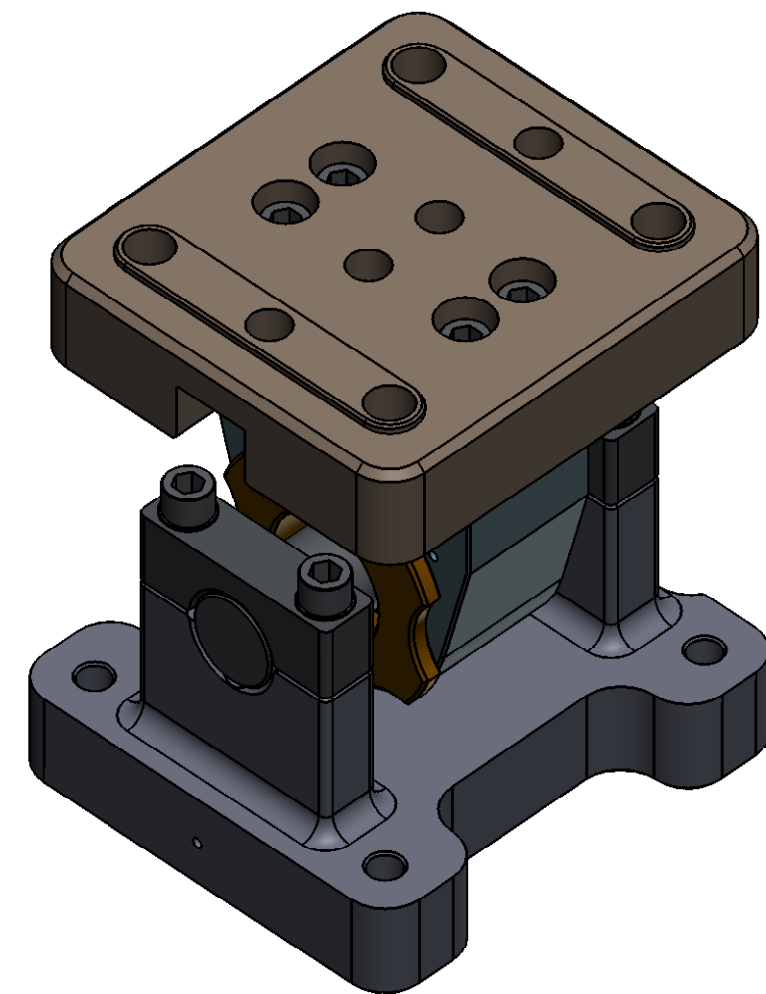


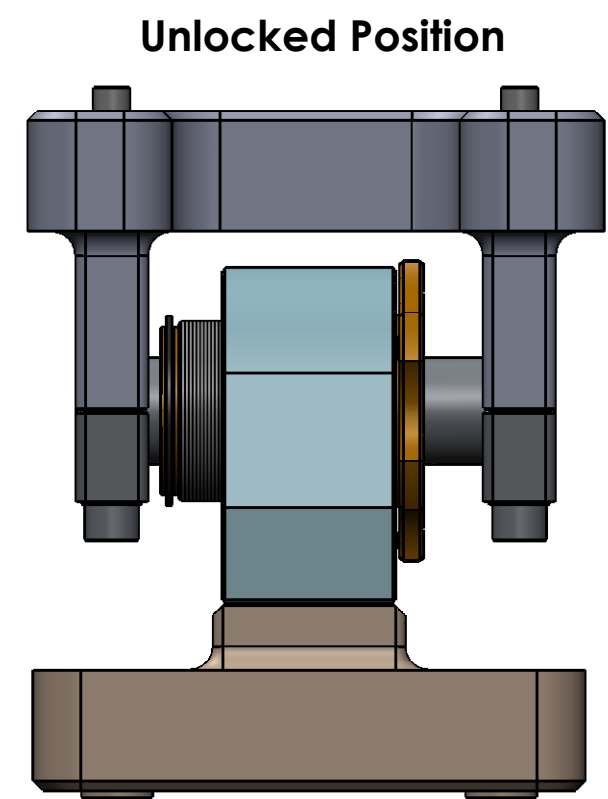
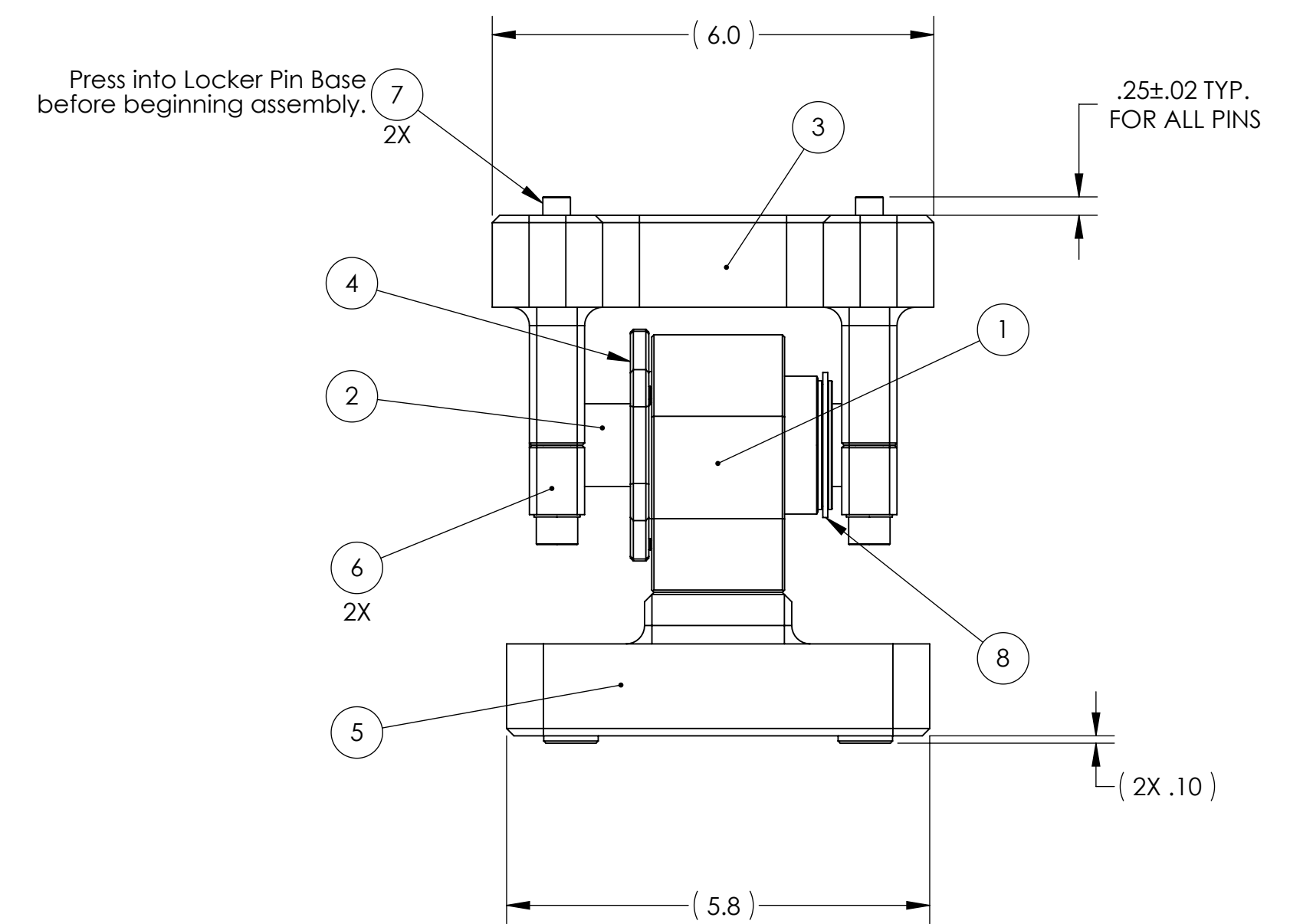
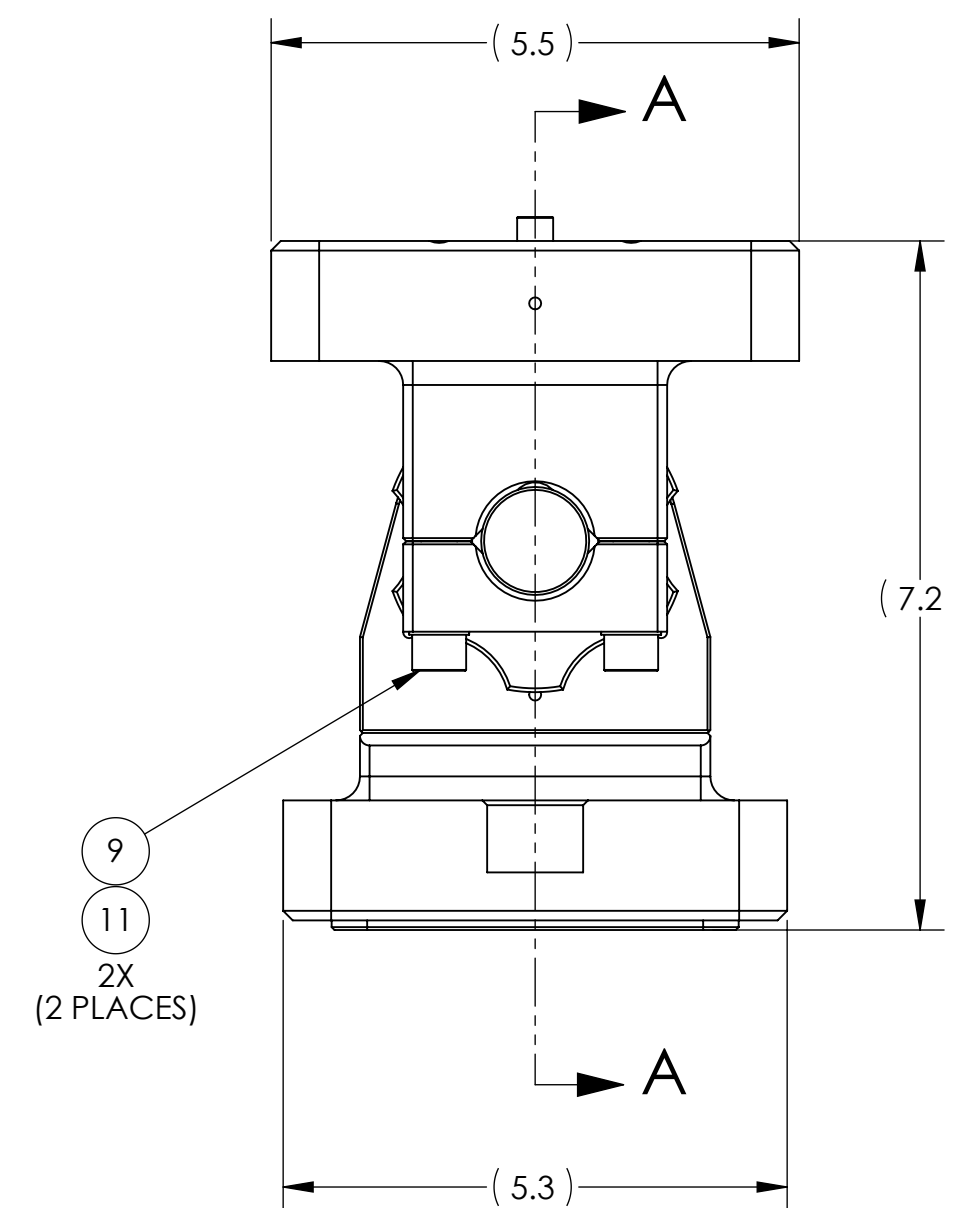
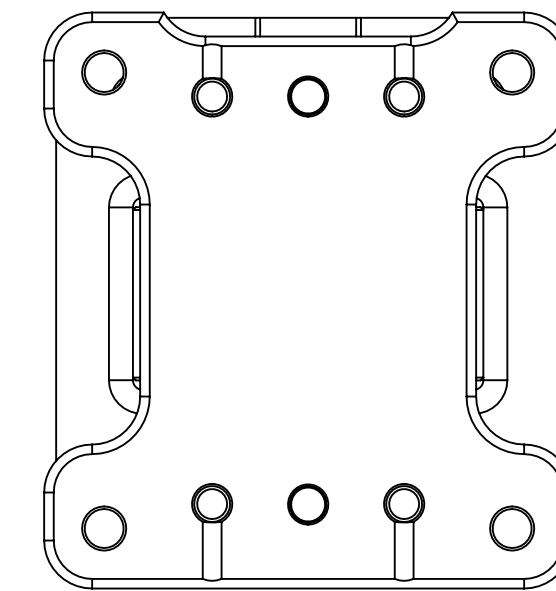
NOTES CONTINUED:  
 5. Refer to LIGO-E0900216 for detailed assembly instructions.  
 6. Weight of finished assembly: 12.3 lbs



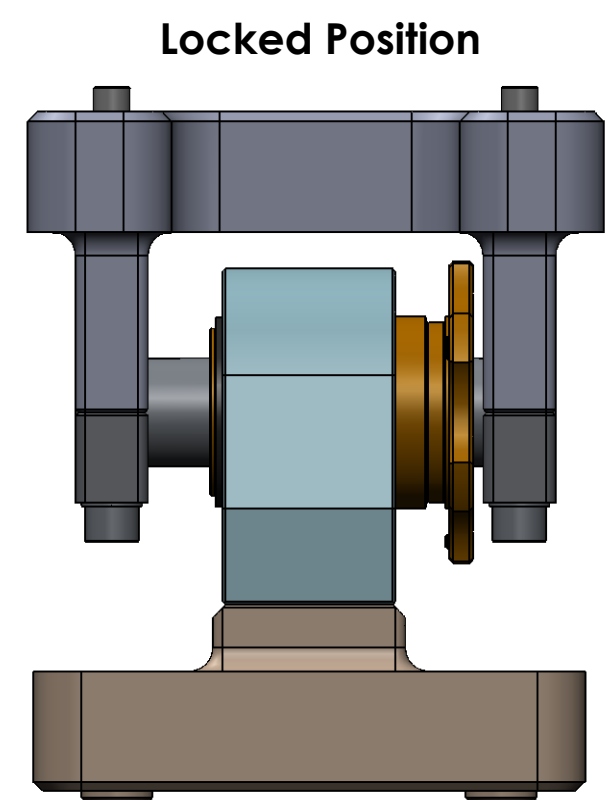
ISOMETRIC VIEW (TOP)



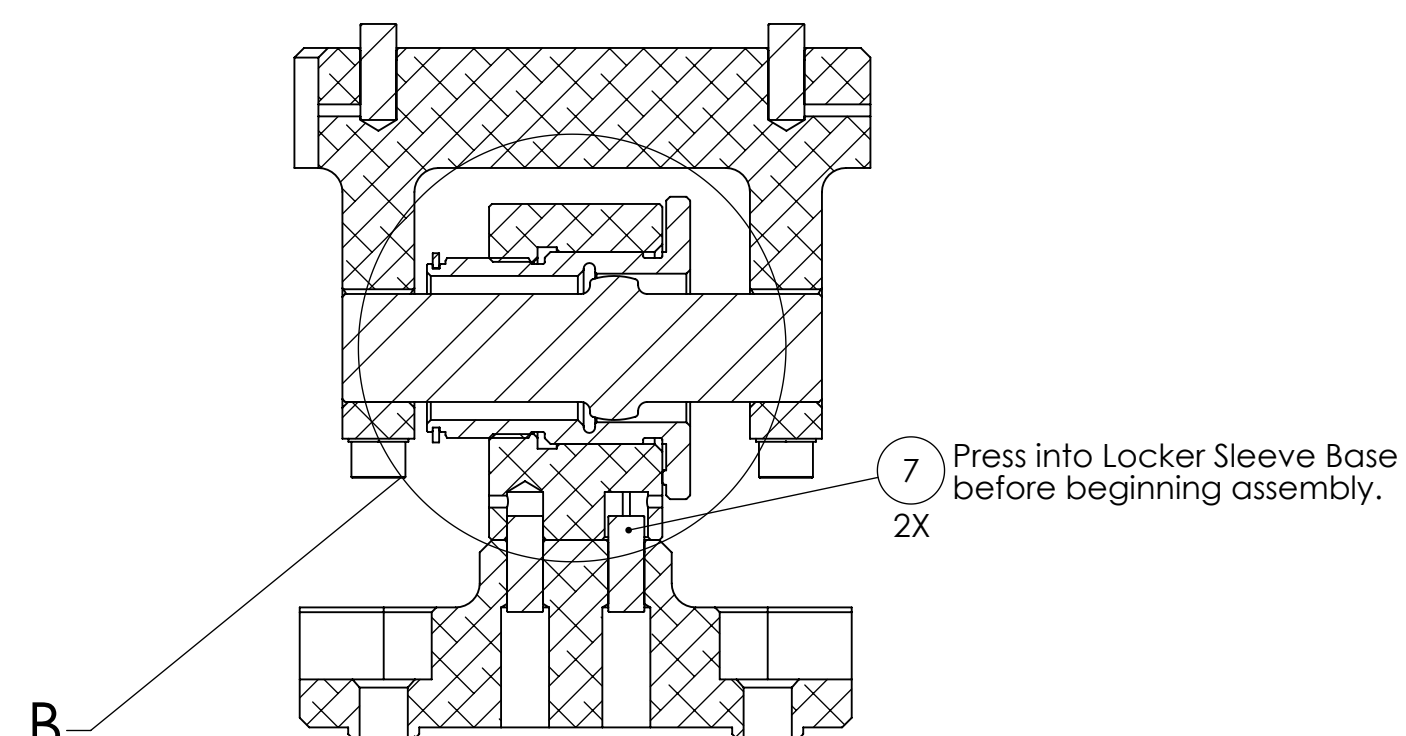
ISOMETRIC VIEW (BOTTOM)



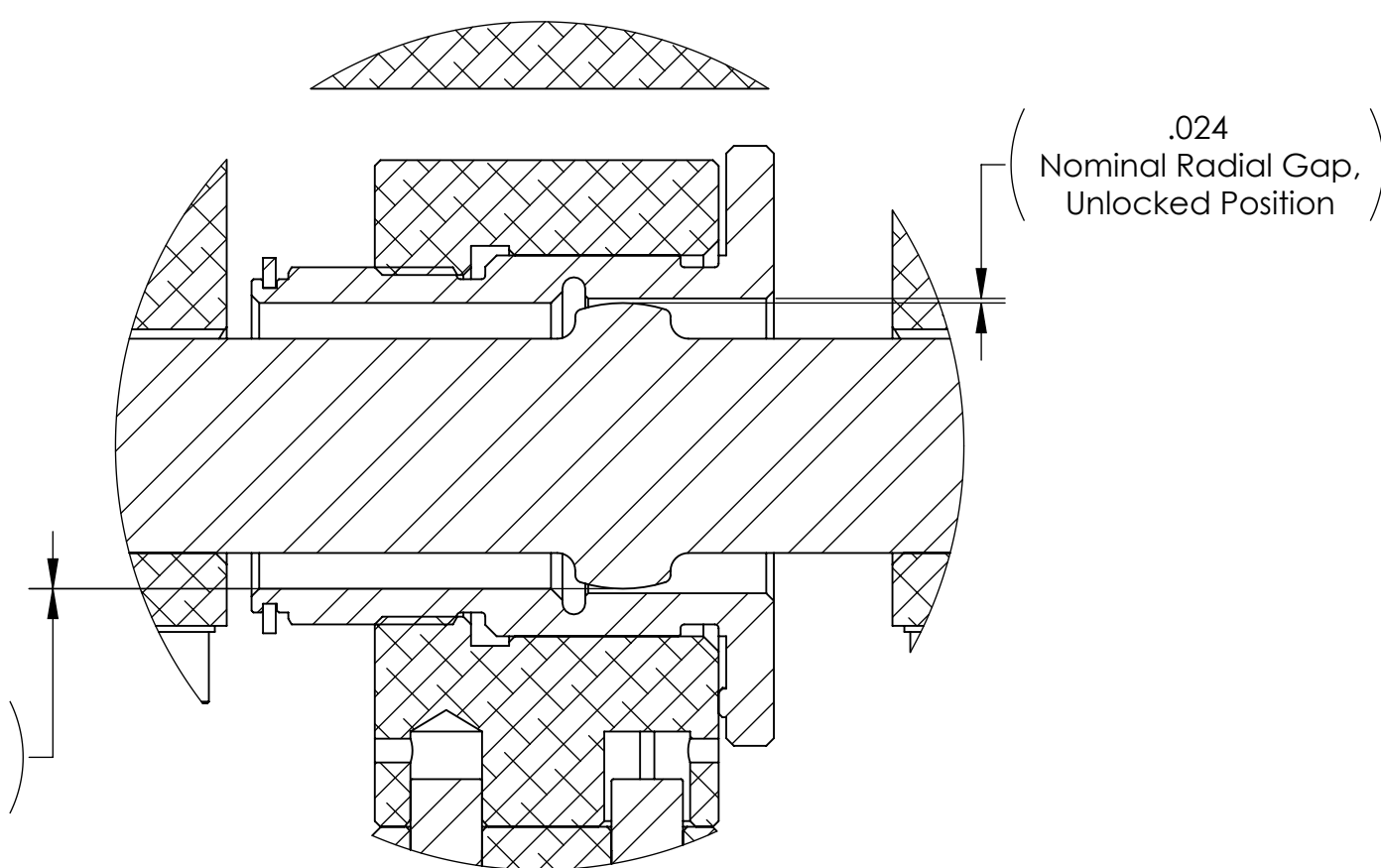
Unlocked Position



Locked Position

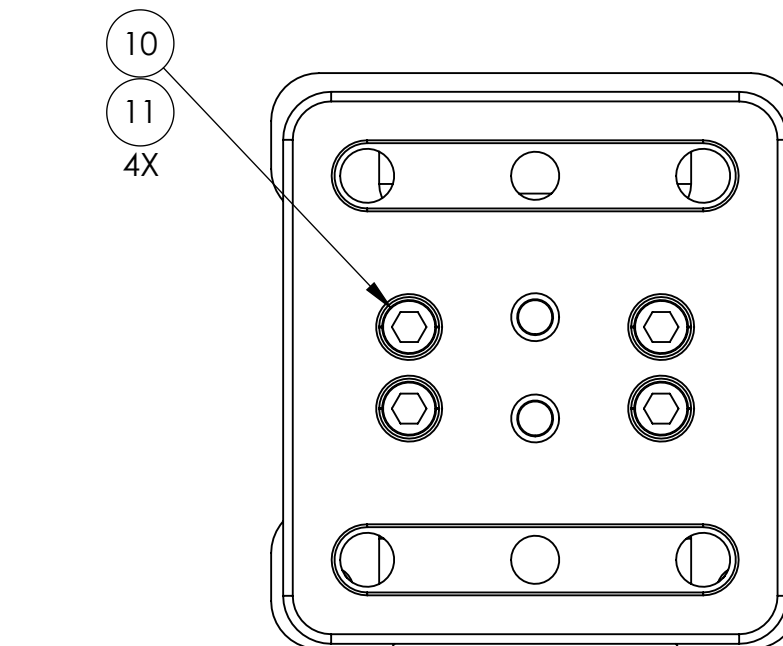


SECTION A-A



DETAIL B SCALE:1

.00025  
Nominal Radial Gap,  
Locked Position



REV.	DATE	DCN #	DRAWING TREE #
v1 / E	08 JAN 2008	N/A	N/A
v2	15 JAN 2010	E1000001	T0900305

ITEM NO.	PART NUMBER	DESCRIPTION	SIZE / TYPE	MATERIAL	REQ
11	UCC_WFV-38	Vented Washer, 3/8"	3/8" (.39"x.63")	18-8 SS	8
10	HOLOKROME_78106	SHCS, 3/8"-16x2.0"	3/8"-16x2.0"	18-8 SS	4
9	HOLOKROME_78104	SHCS, 3/8"-16x1.75"	3/8"-16x1.75"	18-8 SS	4
8	SMALLEY_FSE-0175	External Snap Ring	1.75" DIA x .067" THICK	AISI 304	1
7	MCMaster_90145A624	Dowel Pin, 3/8"x1.0"	3/8"x1.0"	18-8 SS	4
6	D0900635	Locker Pin Cap	-	2024-T351 Al	2
5	D071140	Locker Sleeve Base	-	6061-T6 Al	1
4	D070270	Locker Sleeve	-	See Notes	1
3	D047936	Locker Pin Base	-	2024-T351 Al	1
2	D047935	Locker Spherical Pin	-	See Notes	1
1	D047932	Locker Sleeve Housing	-	2024-T351 Al	1

NOTES AND TOLERANCES: (UNLESS OTHERWISE SPECIFIED)	
DIMENSIONS ARE IN INCHES	
TOLERANCES: .XX ± .015 .XXX ± .005	
ANGULAR ± 0.5°	
MATERIAL	FINISH
See BOM	See BOM

LIGO CALIFORNIA INSTITUTE OF TECHNOLOGY MASSACHUSETTS INSTITUTE OF TECHNOLOGY		PART NAME	
SYSTEM ADVANCED LIGO		Asm, Locker	
SUB-SYSTEM SEI		DESIGNER AS 29 JAN 2009	SIZE DWG. NO. D
NEXT ASSY D0900154		DRAFTER MM 4 AUG 2009.25	D071450
		CHECKER AS 15 JAN 2010	REV. v2
		APPROVAL KM 15 JAN 2010	SCALE: 1:2 PROJECTION: SHEET 1 OF 1

D071450\_AsmLocker\_PART PDM REV: V1.022 DRAWING PDM REV: X001