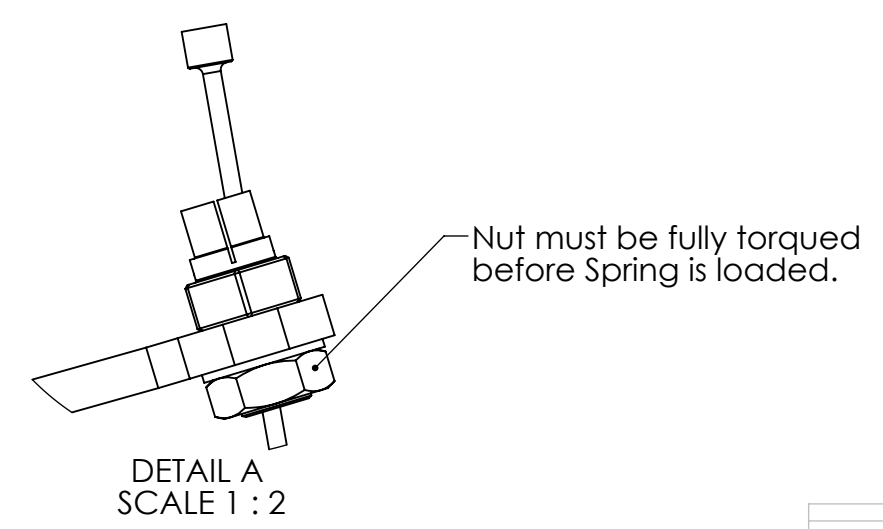
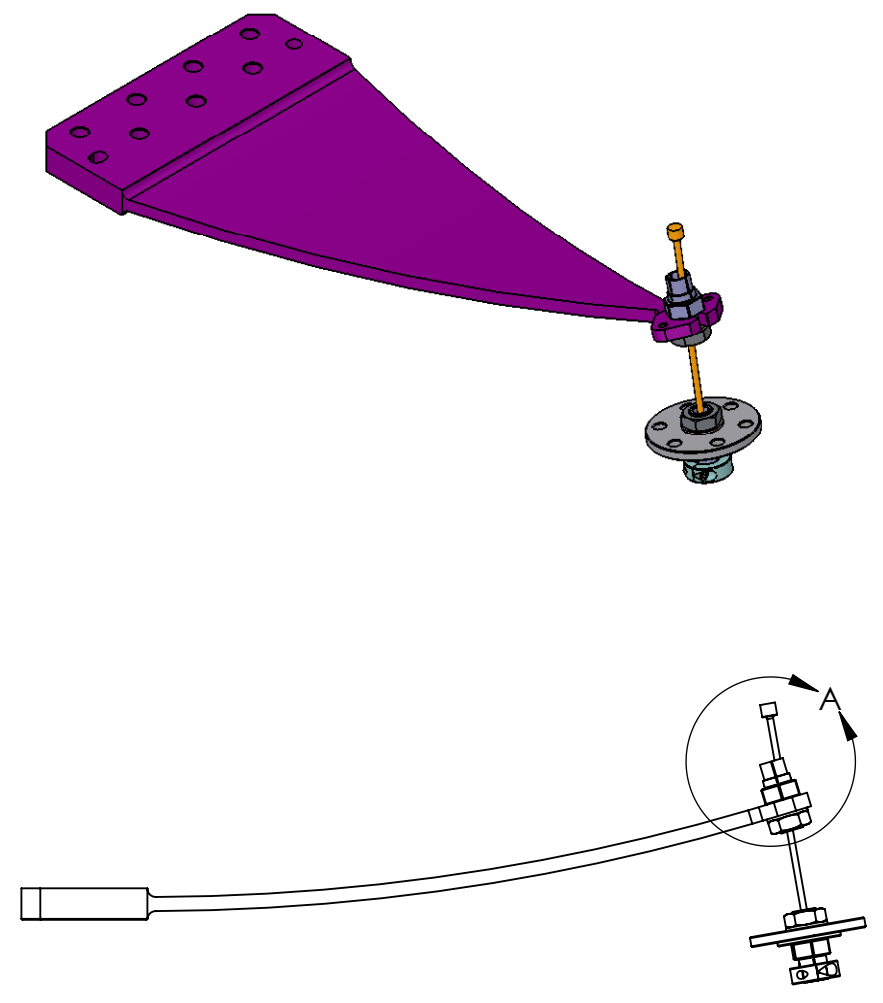


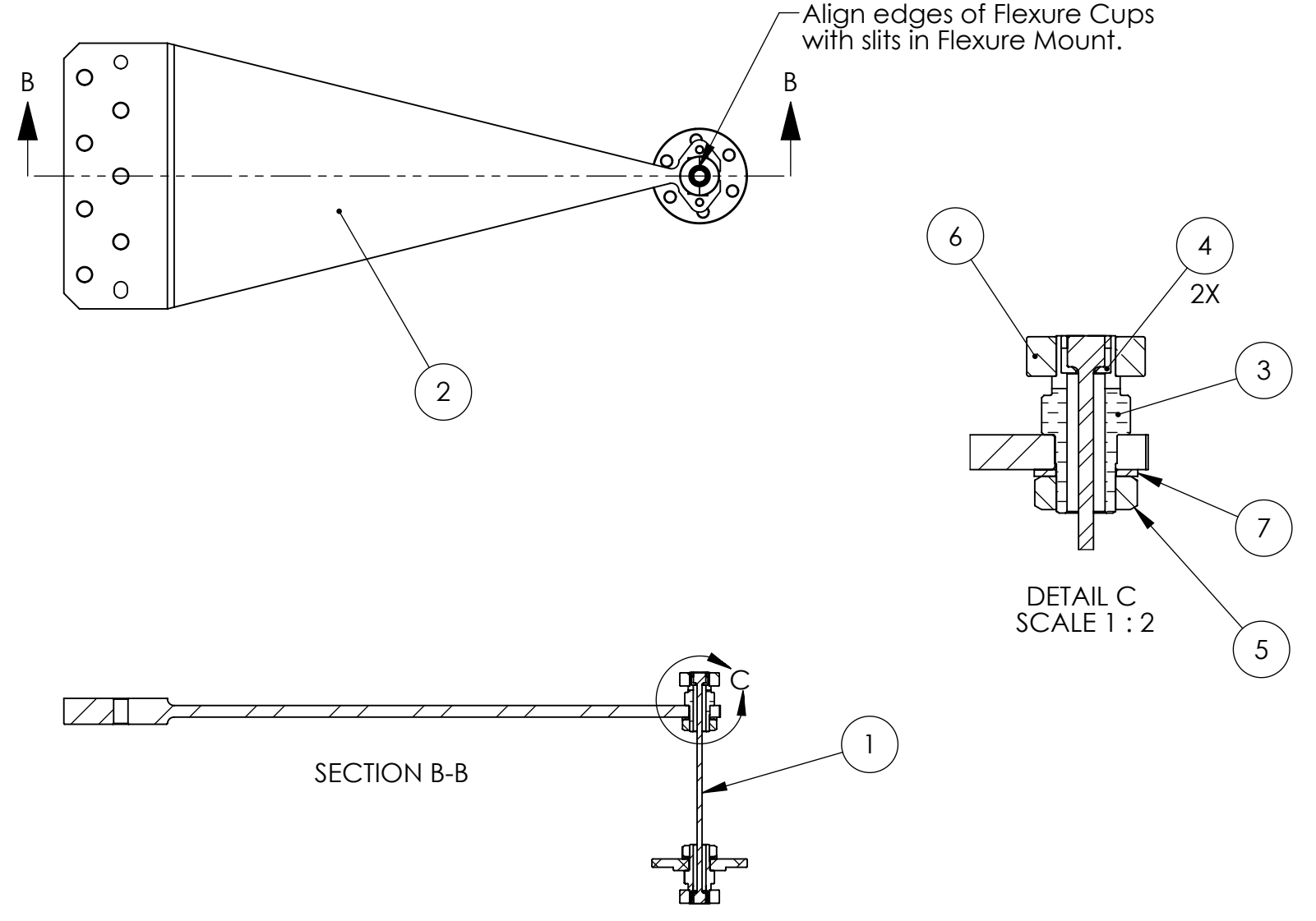
NOTES CONTINUED:
 5. Refer to LIGO-E0900216 for detailed assembly instructions.

6. Flexure is fragile: handle with care.
 7. Weight of finished assembly: 25.6 lbs

Partial Assembly with No Load



Full Assembly with Load



| ITEM NO. | PART NUMBER | DESCRIPTION | SIZE / TYPE | MATERIAL | Loaded/ QTY. |
|----------|--------------------|---|---------------------------------|------------------|--------------|
| 7 | MCMASTER_98017A220 | Flat Washer, 3/4" | 3/4" (.77"x1.31") | 18-8 SS | 1 |
| 6 | D0900207 | Shaft Collar, 3/4" Bore, 2-Piece, Custom Ag-Plated Screws | 3/4"IDx1.5"OD, Ag-Plated Screws | 316 SS / 18-8 SS | 1 |
| 5 | D0900206 | Hex Nut, Custom Ag-Plated, 3/4"-10 | 3/4"-10, Ag-Plated | 18-8 SS | 1 |
| 4 | D071104 | Flexure Cup | - | MARAGING 300 | 2 |
| 3 | D071103 | Flexure Mount | - | 17-4 PH H1150 | 1 |
| 2 | D071100 | Spring | - | MARAGING 300 | 1 |
| 1 | D071431 | Asm, Flexure | - | See BOM | 1 |

| REV. | DATE | DCN # | DRAWING TREE # |
|--------|-------------|----------|----------------|
| v1 / C | 29 JAN 2008 | N/A | N/A |
| v2 | 12 JAN 2010 | E1000001 | T0900305 |
| - | - | - | - |

NOTES AND TOLERANCES: (UNLESS OTHERWISE SPECIFIED)
 1. INTERPRET DRAWING PER ASME Y14.5-1994.
 2. REMOVE ALL SHARP EDGES, R.02 MIN.
 3. DO NOT SCALE FROM DRAWING.
 4. ALL MACHINING FLUIDS MUST BE FULLY SYNTHETIC, FULLY WATER SOLUBLE AND FREE OF SULFUR, SILICONE, AND CHLORINE.

DIMENSIONS ARE IN INCHES
 TOLERANCES:
 .XX ± .015
 .XXX ± .005
 ANGULAR ± 0.5°

MATERIAL See BOM FINISH See BOM

LIGO CALIFORNIA INSTITUTE OF TECHNOLOGY
 MASSACHUSETTS INSTITUTE OF TECHNOLOGY

SYSTEM **ADVANCED LIGO** SUB-SYSTEM **SEI**

PART NAME **Asm, Spring and Flexure**

DESIGNER Andy Stein 17 FEB 2009 SIZE DWG. NO. **D071430** REV. **v2**
 DRAFTER Andy Stein 12 JAN 2010
 CHECKER
 APPROVAL Ken Mason 12 JAN 2010

SCALE: 1:6 PROJECTION: SHEET 1 OF 1

NEXT ASSY **D0900124**

D071430_Asm-Spring_and_Flexure, PART PDM REV: V1-020, DRAWING PDM REV: X-000