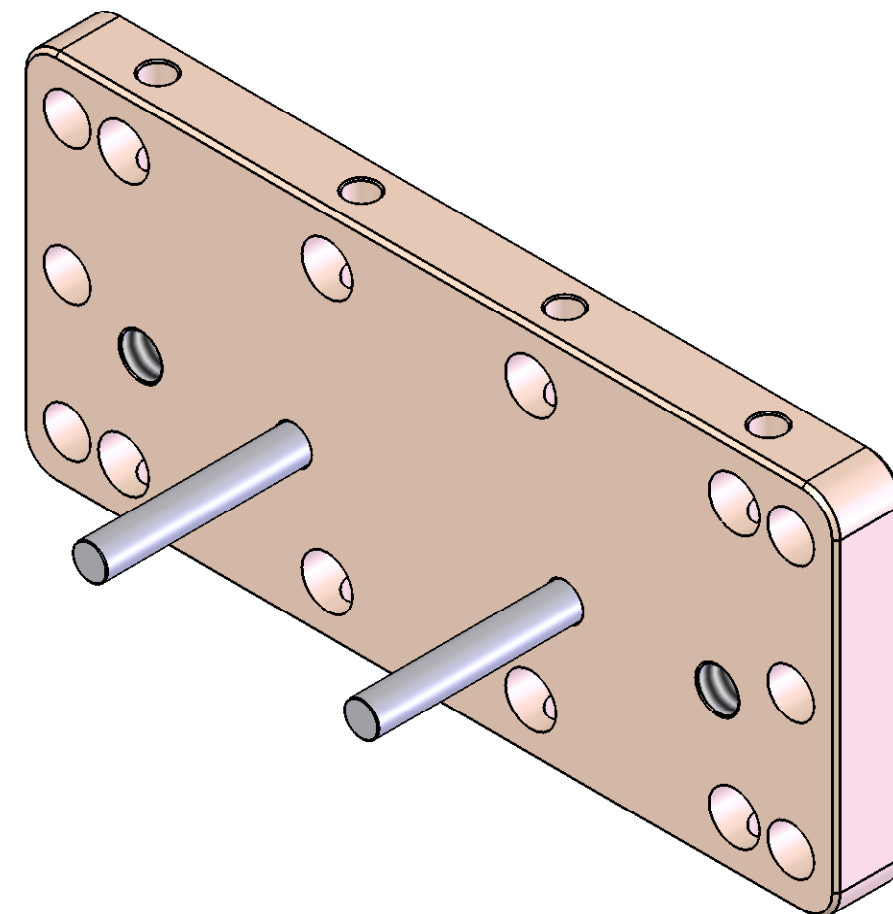
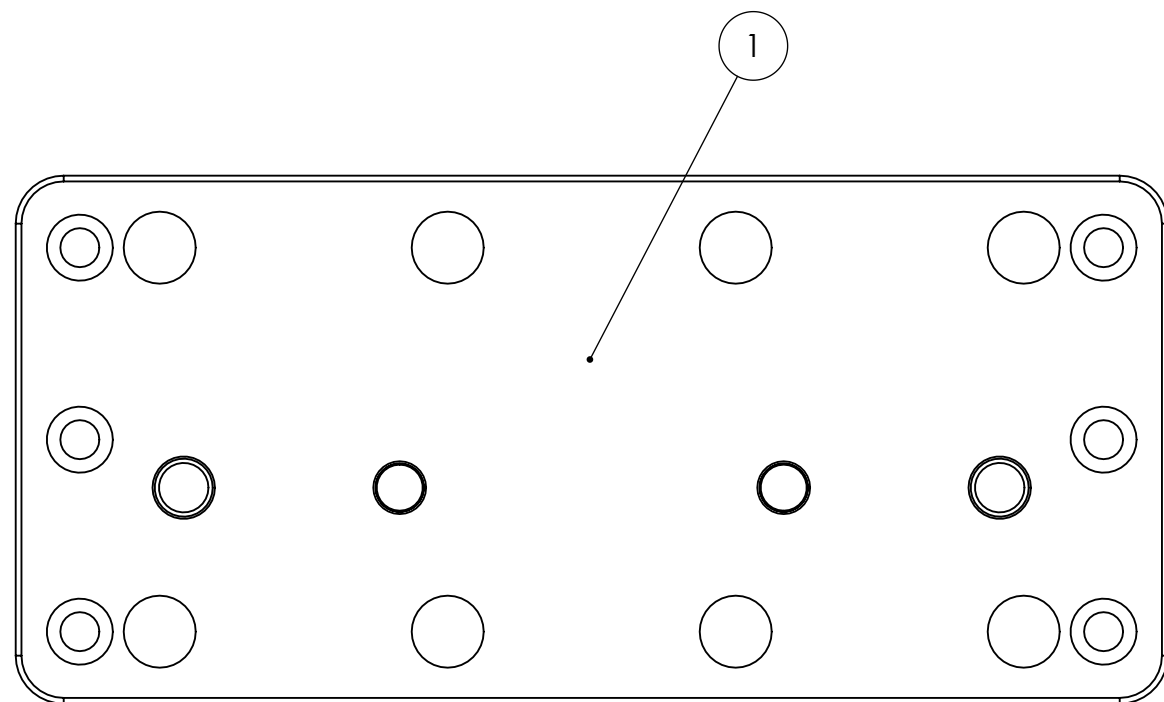
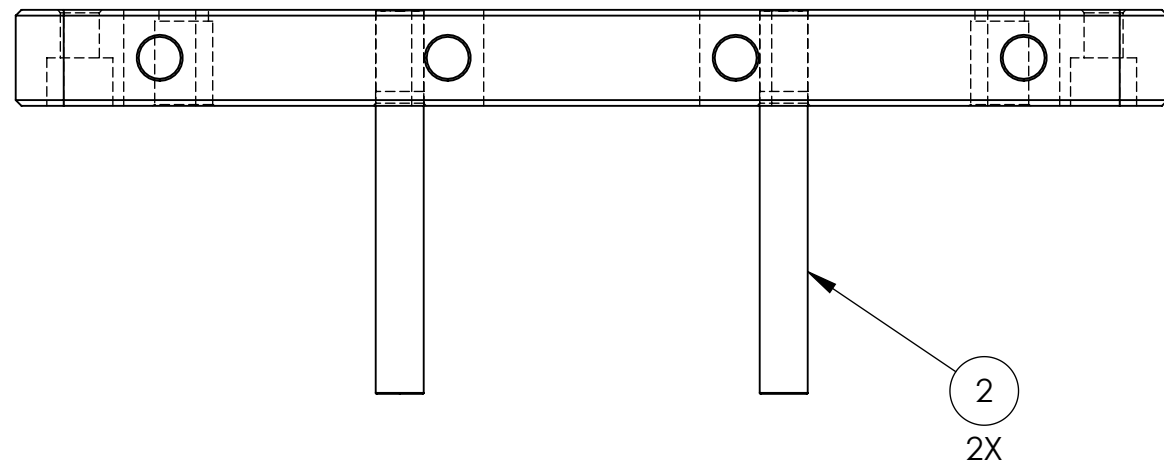


8 7 6 5 4 3 2 1

NOTES CONTINUED:

- 5. Refer to LIGO-E0900216 for detailed assembly instructions.
- 6. Weight of finished assembly: 6.2 lbs

REV.	DATE	DCN #	DRAWING TREE #
v1 / C	08 JAN 2008	N/A	N/A
v2	11 JAN 2010	E1000001	T0900305
-	-	-	-



ITEM NO.	PART NUMBER	DESCRIPTION	SIZE / TYPE	MATERIAL	QTY.
2	MCMASTER_90145A729	Dowel Pin, 1/2"x4.0"	1/2"x4.0"	18-8 SS	2
1	D071063	Keel Wall	-	6061-T6 Al	1

PARTS LIST

**NOTES AND TOLERANCES: (UNLESS OTHERWISE SPECIFIED)**

DIMENSIONS ARE IN INCHES

TOLERANCES:  
 .XX ± .015  
 .XXX ± .005  
 ANGULAR ± 0.5°

1. INTERPRET DRAWING PER ASME Y14.5-1994.  
 2. REMOVE ALL SHARP EDGES, R.02 MIN.  
 3. DO NOT SCALE FROM DRAWING.  
 4. ALL MACHINING FLUIDS MUST BE FULLY SYNTHETIC, FULLY WATER SOLUBLE AND FREE OF SULFUR, SILICONE, AND CHLORINE.

MATERIAL See BOM      FINISH See BOM

CALIFORNIA INSTITUTE OF TECHNOLOGY MASSACHUSETTS INSTITUTE OF TECHNOLOGY		PART NAME <b>Asm, Keel Wall</b>	
SYSTEM <b>ADVANCED LIGO</b>	SUB-SYSTEM <b>SEI</b>	DESIGNER Andy Stein    17 FEB 2009	SIZE DWG. NO. <b>B D071425</b>
DRAFTER Andy Stein    04 JAN 2010	CHECKER Ken Mason    11 JAN 2010	REV. <b>v2</b>	SCALE: 1:2    PROJECTION:
NEXT ASSY <b>D071424</b>	SHEET 1 OF 1		

D071425\_Asm-Keel\_Wall, PART PDM REV: V1-010, DRAWING PDM REV: X-001

8 7 6 5 4 3 2 1