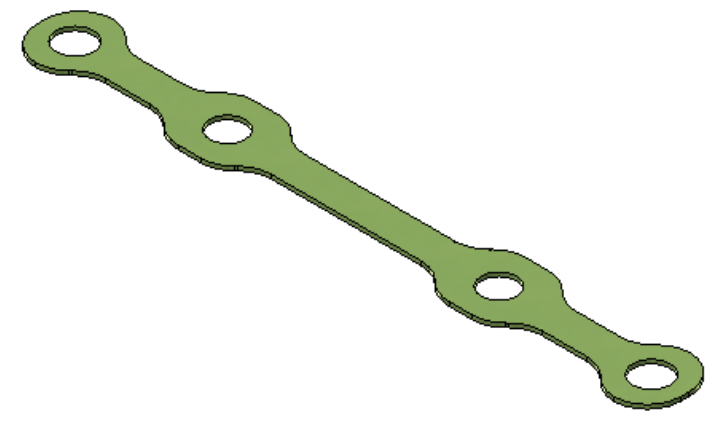
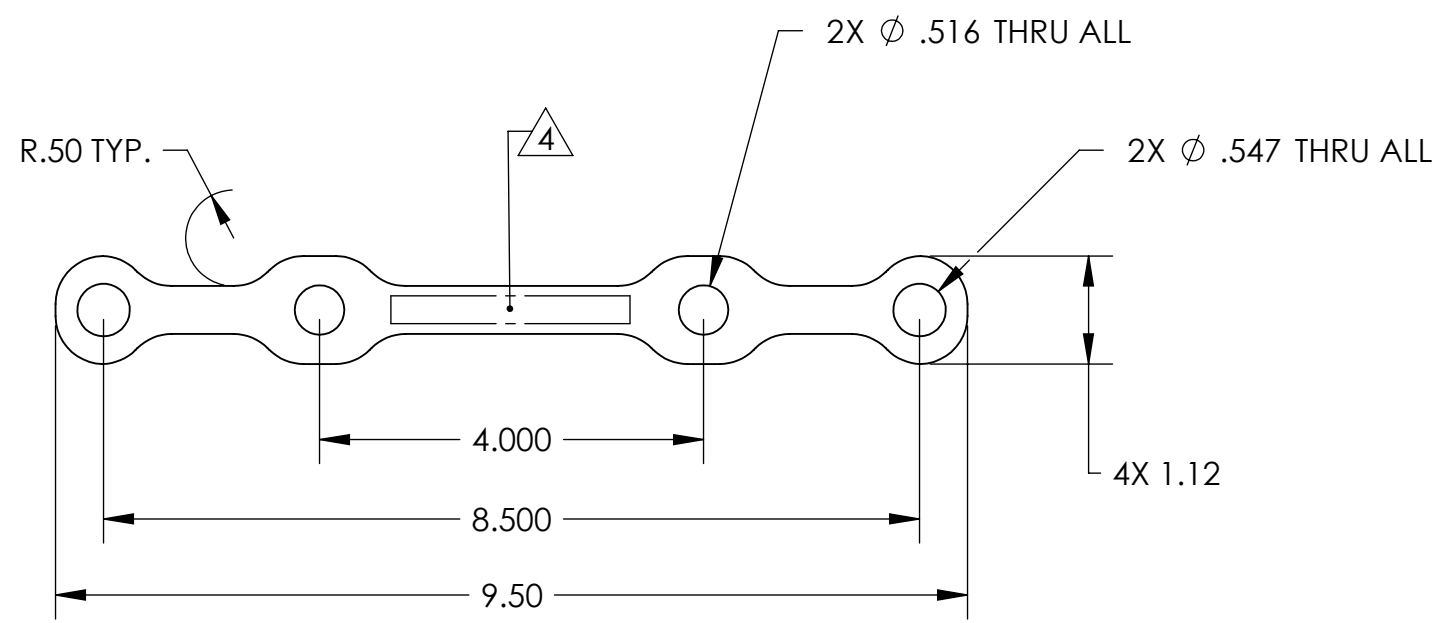


REVISION HISTORY				
REV	DATE	ECO	APPROVAL	DESCRIPTION
V1 / C	2 Jul 2007	1067	D. Bryce	Release for Enhanced LIGO.
V2	16 Apr 2009		A. Stein	Release for Advanced LIGO. Added electropolish finish.



MANUFACTURING NOTES:

- 1) UNLESS MANUFACTURED FROM SHEET WITH FINISH OF 2B OR EQUIVALENT, MACHINE ALL SURFACES TO REMOVE OXIDES AND MILL FINISH. ABRASIVE REMOVAL TECHNIQUES (OTHER THAN DRESSED BLANCHARD GRINDING) ARE NOT ACCEPTABLE.
- 2) ALL MACHINING FLUIDS MUST BE WATER SOLUBLE AND FREE OF SULFUR, CHLORINE, AND SILICONE, SUCH AS CINCINNATI MILACRON CIMTECH 410.
- 3) THOROUGHLY CLEAN PART TO REMOVE ALL OIL, GREASE, DIRT, AND CHIPS.
- 4) WHERE INDICATED, MECHANICALLY SCRIBE, STAMP, OR ENGRAVE THE FOLLOWING INFORMATION AS SHOWN BELOW: **PART NUMBER-REVISION** (AND **TYPE** IF INDICATED), FOLLOWED ON THE NEXT LINE WITH A UNIQUE 3-DIGIT **SERIAL NUMBER** STARTING AT 001 FOR THE FIRST PART AND INCREMENTING THEREAFTER. USE 0.38" TALL CHARACTERS UNLESS PART SIZE DICTATES SMALLER.

D071201-V2
S/N - ###

POST-MANUFACTURING NOTES:

- P1) CLEAN TO LIGO STANDARDS, CLASS A (PER E0900047 AND E960022).

APPROVALS		DATE	UNLESS OTHERWISE SPECIFIED: DIMENSIONS ARE IN INCHES DECIMAL TOLERANCES: .XX ±.015 .XXX ±.005 ANG TOL: ± 1° SURFACE ROUGHNESS: 63 REMOVE ALL SHARP EDGES. LEAVE .005 X 45° MIN CHAMFER, OR .005 MIN RADIUS.	ORIGINAL DESIGN BY: High Precision Devices 1668 Valtec Lane, Suite C, Boulder, Colorado 80301 Phone: (303) 447-2558 Fax: (303) 447-2548 Web Site: www.hpd-online.com		MODIFIED BY:
ENGINEERING (HPD): J. Waterman		6/1/2007		DESCRIPTION: Mass Spacer		
QUALITY (HPD): C. Danaher		6/1/2007	P/N: D071201 CONFIG: -			
MATERIAL: 304 SS		THIS PRINT & THE EMBEDDED CAD MODEL ARE THE DOCUMENTATION OF RECORD. UNLESS OTHERWISE SPECIFIED, ALL FEATURES MUST CONFORM TO .010 TOTAL WIDE PROFILE OF A SURFACE.		CAD FILE NAME: D071201_Mass_Spacer		
FINISH: ELECTROPOLISH		PROJECT: HAM ISI, Advanced LIGO		PROJECT: HAM ISI, Advanced LIGO		
MASS: 0.10 lbs		SIZE B SCALE: 1:2 DRAWN BY: Jonas Waterman (HPD)		REV V2		
		SHEET 1 OF 1 DATE PRINTED: 4/16/2009				