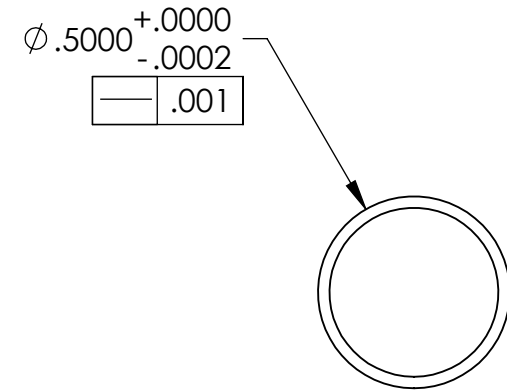
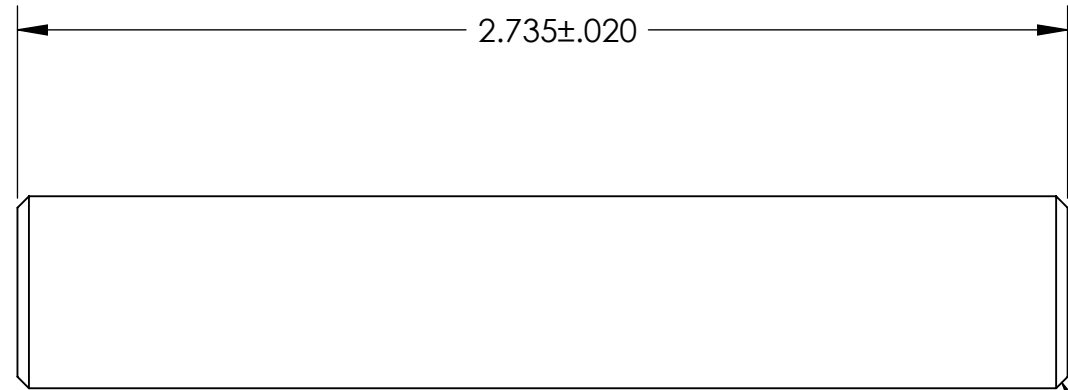


REVISION HISTORY				
REV	DATE	ECO	APPROVAL	DESCRIPTION
V1 / C	21 Jun 2007	1065	D. Senders	Release for Enhanced LIGO.
V2	14 Apr 2009		A. Stein	Release for Advanced LIGO. No change to geometry.



2X .03 X 45° CHAMFER

MANUFACTURING NOTES:

- 1) SURFACE TEXTURE PER ANSI/ASME B46.1-1985.
- 2) ALL MACHINING FLUIDS MUST BE WATER SOLUBLE AND FREE OF SULFUR, CHLORINE, AND SILICONE, SUCH AS CINCINNATI MILACRON CIMTECH 410.
- 3) THOROUGHLY CLEAN PART TO REMOVE ALL OIL, GREASE, DIRT, AND CHIPS.

POST-MANUFACTURING NOTES:

- P1) CLEAN TO LIGO STANDARDS, CLASS A (PER E0900047 AND E960022).

APPROVALS		DATE	UNLESS OTHERWISE SPECIFIED: DIMENSIONS ARE IN INCHES DECIMAL TOLERANCES: .XX ±.015 .XXX ±.005 ANG TOL: ± 1° SURFACE ROUGHNESS: 63	ORIGINAL DESIGN BY: High Precision Devices 1668 Valtec Lane, Suite C, Boulder, Colorado 80301 Phone: (303) 447-2558 Fax: (303) 447-2548 Web Site: www.hpd-online.com		MODIFIED BY:
ENGINEERING (HPD): D. Senders		5/22/2007		REMOVE ALL SHARP EDGES. LEAVE .005 X 45° MIN CHAMFER, OR .005 MIN RADIUS.	DESCRIPTION: Sensor Target Post P/N: D071167 CONFIG: -	
QUALITY (HPD): C. Danaher		5/22/2007	THIS PRINT & THE EMBEDDED CAD MODEL ARE THE DOCUMENTATION OF RECORD.		CAD FILE NAME: D071167_Sensor_Target_Post	
MATERIAL: 304 SS				PROJECT: HAM ISI, Advanced LIGO		
FINISH: None				SIZE B SCALE: 2:1 DRAWN BY: Dave Senders (HPD)	REV V2	
MASS: 0.15 lbs				SHEET 1 OF 1 DATE PRINTED: 4/14/2009		