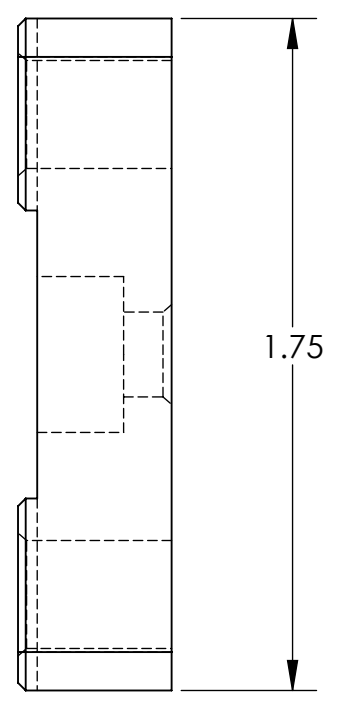
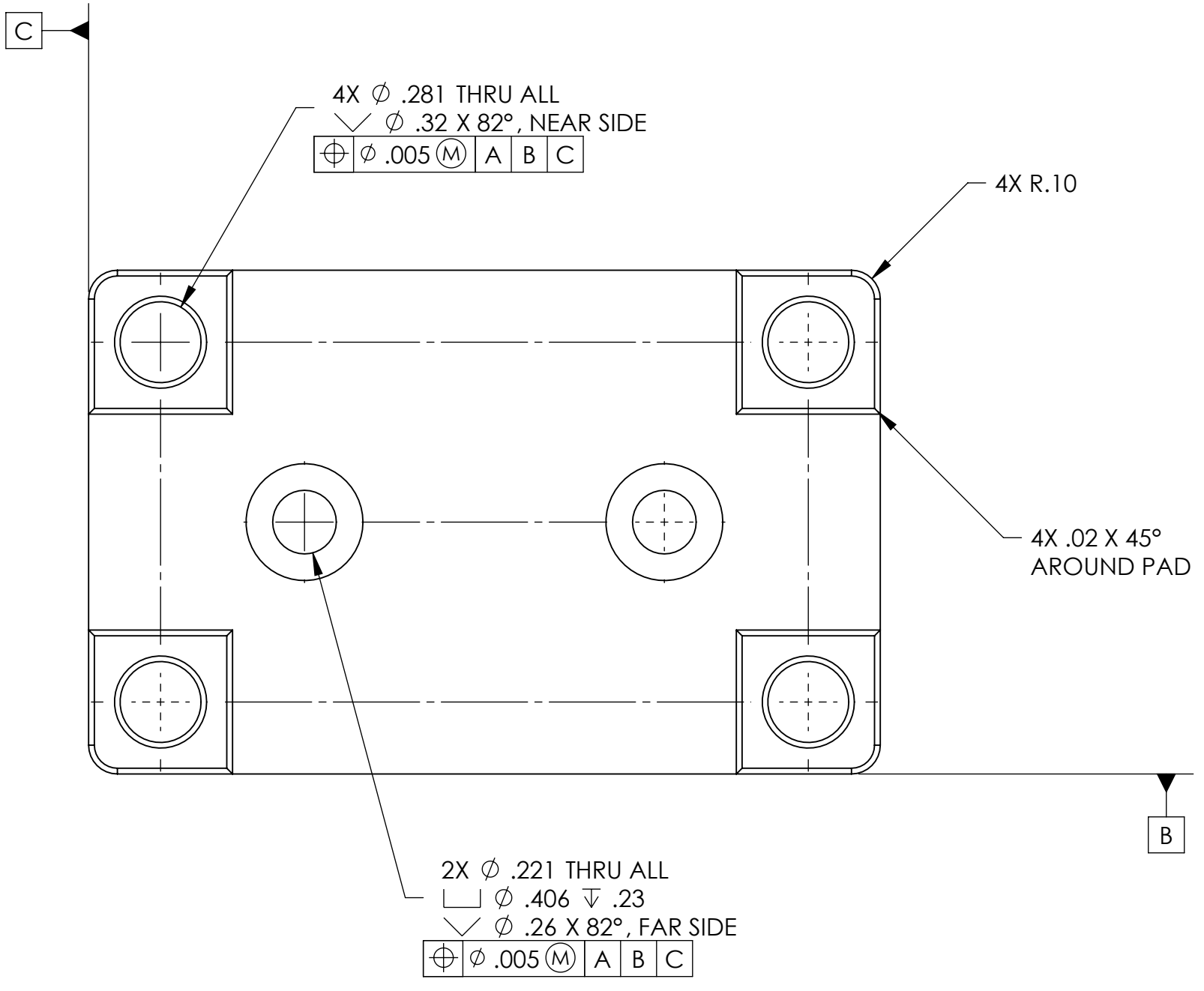
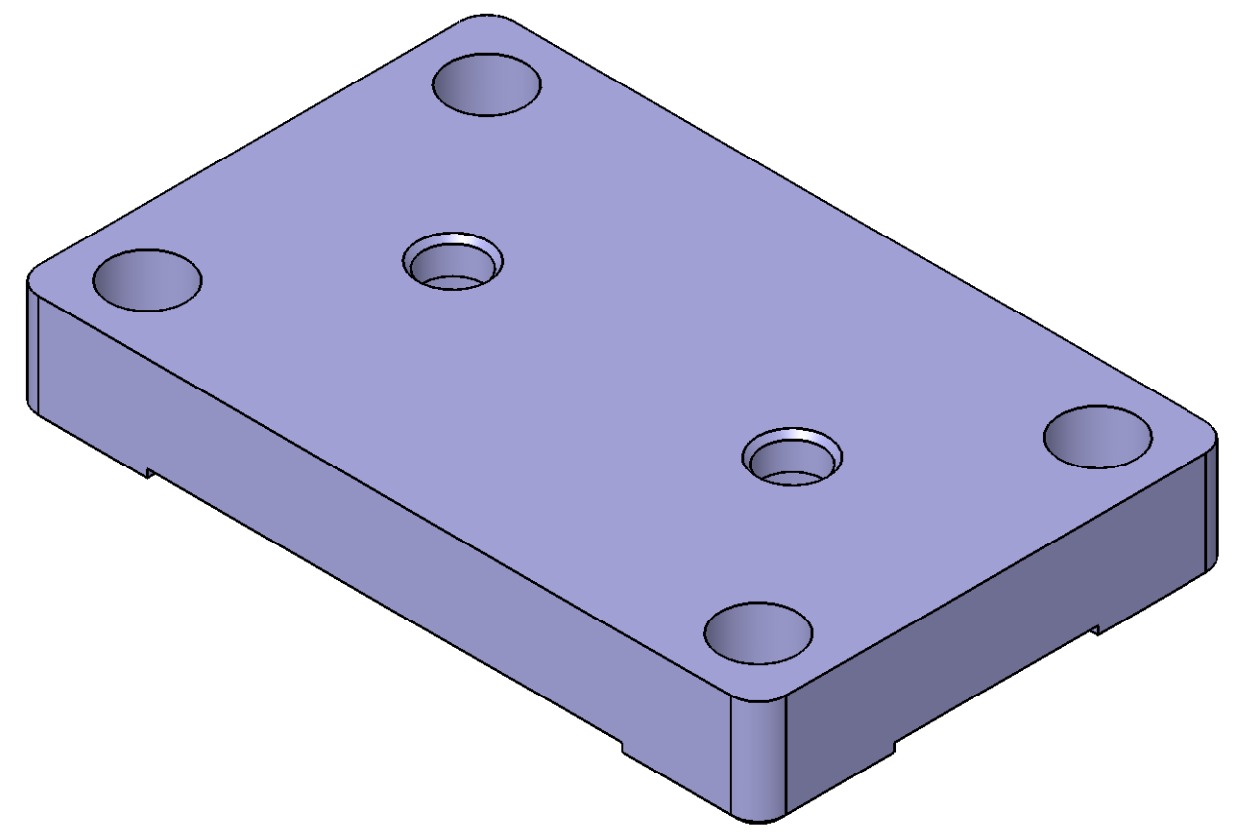
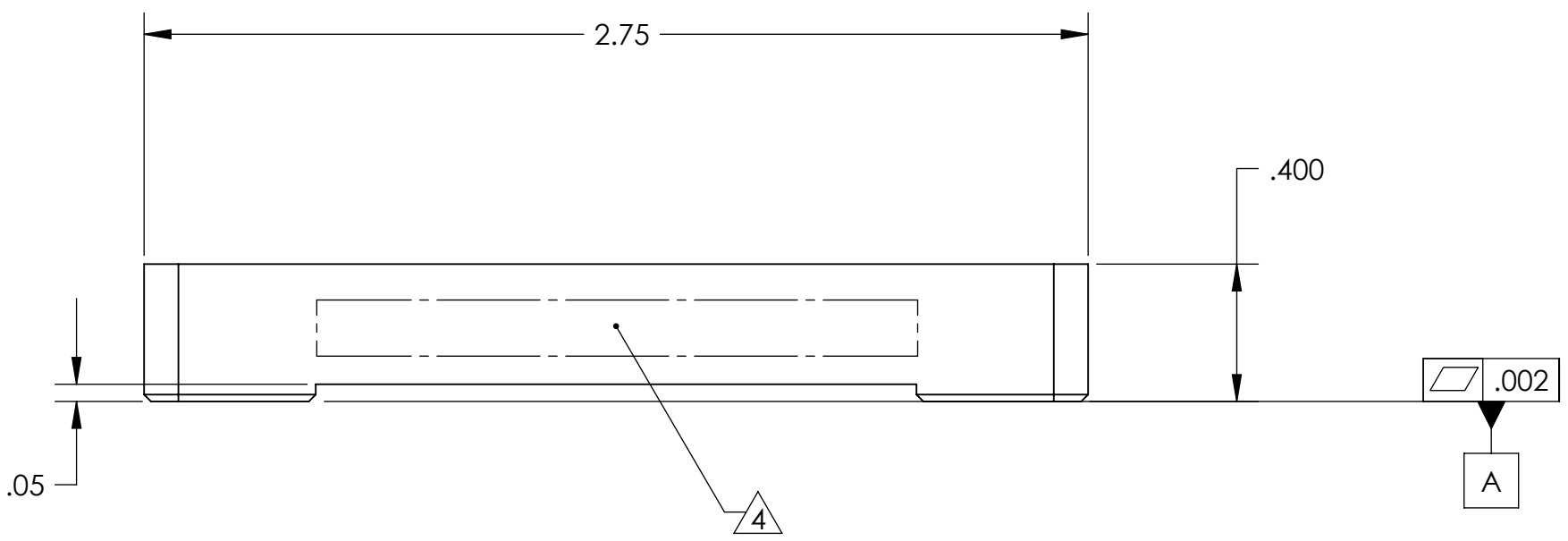


REVISION HISTORY				
REV	DATE	ECO	APPROVAL	DESCRIPTION
V1 / C	25 Jun 2007	1066	D. Senders	Release for Enhanced LIGO.
V2	3 Apr 2009		A. Stein	Release for Advanced LIGO. Added chamfers and c'sinks.



- MACHINING NOTES:
- 1) MACHINE ALL SURFACES TO REMOVE OXIDES AND MILL FINISH. ABRASIVE REMOVAL TECHNIQUES (OTHER THAN DRESSED BLANCHARD GRINDING) ARE NOT ACCEPTABLE.
 - 2) ALL MACHINING FLUIDS MUST BE WATER SOLUBLE AND FREE OF SULFUR, CHLORINE, AND SILICONE, SUCH AS CINCINNATI MILACRON CIMTECH 410.
 - 3) THOROUGHLY CLEAN PART TO REMOVE ALL OIL, GREASE, DIRT, AND CHIPS.
 - 4) WHERE INDICATED, MECHANICALLY SCRIBE, STAMP, OR ENGRAVE THE FOLLOWING INFORMATION AS SHOWN BELOW: **PART NUMBER-REVISION** (AND **TYPE** IF INDICATED), FOLLOWED ON THE NEXT LINE WITH A UNIQUE 3-DIGIT **SERIAL NUMBER** STARTING AT 001 FOR THE FIRST PART AND INCREMENTING THEREAFTER. USE 0.38" TALL CHARACTERS UNLESS PART SIZE DICTATES SMALLER.
- D071164-V2
S/N - ###
- POST-MACHINING NOTES:
- P1) CLEAN TO LIGO STANDARDS, CLASS A.

UNLESS OTHERWISE SPECIFIED: DIMENSIONS ARE IN INCHES DECIMAL TOLERANCES: .XX ±.015 .XXX ±.005 ANG TOL: ± 1° SURFACE ROUGHNESS: 63		ORIGINAL DESIGN BY: High Precision Devices 1468 Valtec Lane, Suite C, Boulder, Colorado 80301 Phone: (303) 447-2558 Fax: (303) 447-2548 Web Site: www.hpd-online.com	MODIFIED BY:
APPROVALS ENGINEERING (HPD): D. Senders 5/22/2007 QUALITY (HPD): C. Danaher 5/22/2007	DATE 5/22/2007	DESCRIPTION: Sensor Head Base Plate	P/N: D071164 CONFIG: -
MATERIAL: 6061-T6 Al FINISH: None MASS: 0.2 lbs	REMOVE ALL SHARP EDGES. LEAVE .005 X 45° MIN CHAMFER, OR .005 MIN RADIUS. THIS PRINT & THE EMBEDDED CAD MODEL ARE THE DOCUMENTATION OF RECORD, UNLESS OTHERWISE SPECIFIED. ALL DIMENSIONS IN THE MODEL ARE BASIC, WITH TOLERANCES GIVEN BY: .010 A B C	CAD FILE NAME: D071164_Sensor_Head_Base_Plate PROJECT: HAM ISI, Advanced LIGO	SIZE: C SCALE: 2:1 SHEET 1 OF 1
DRAWN BY: Dave Senders (HPD) DATE PRINTED: 4/3/2009		REV: V2	