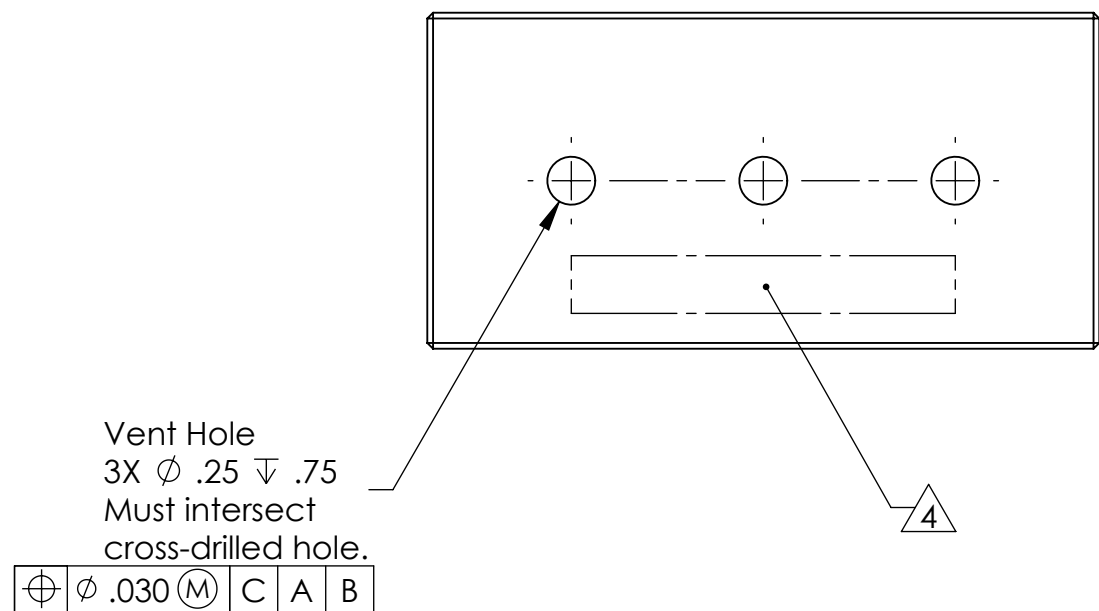
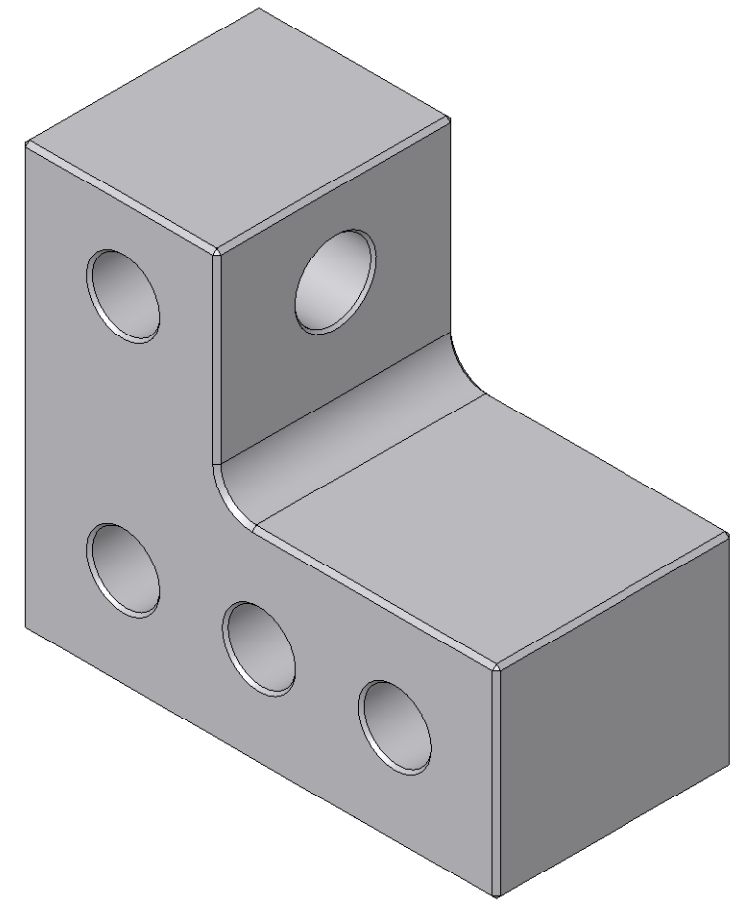
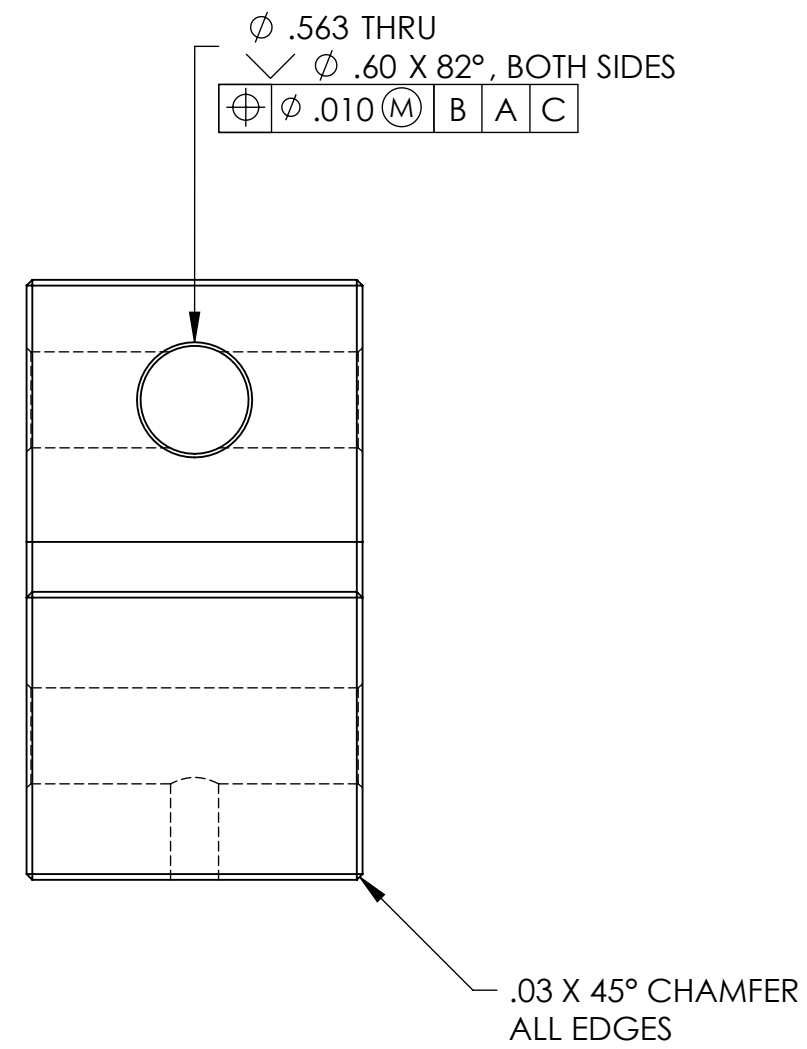
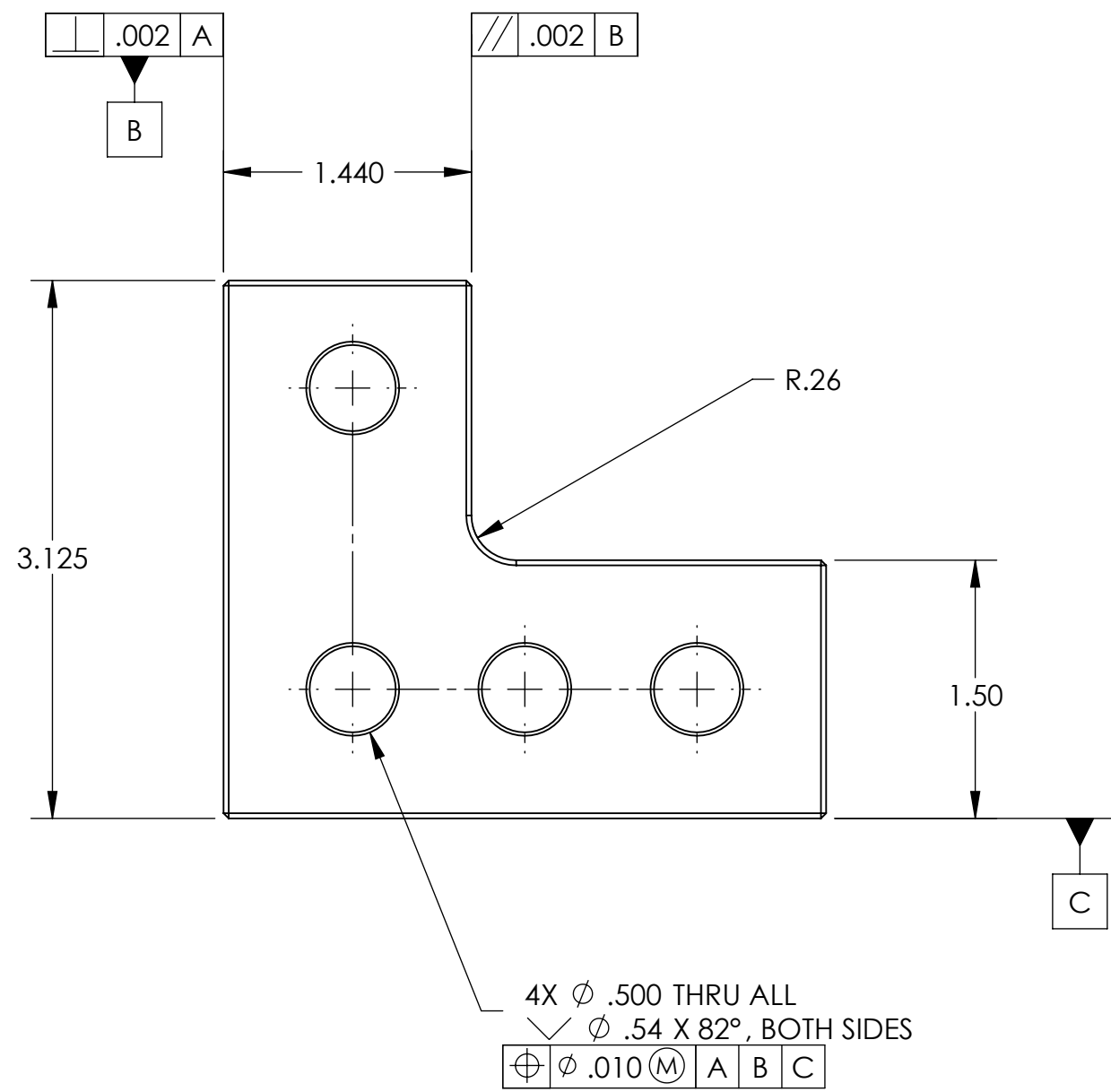
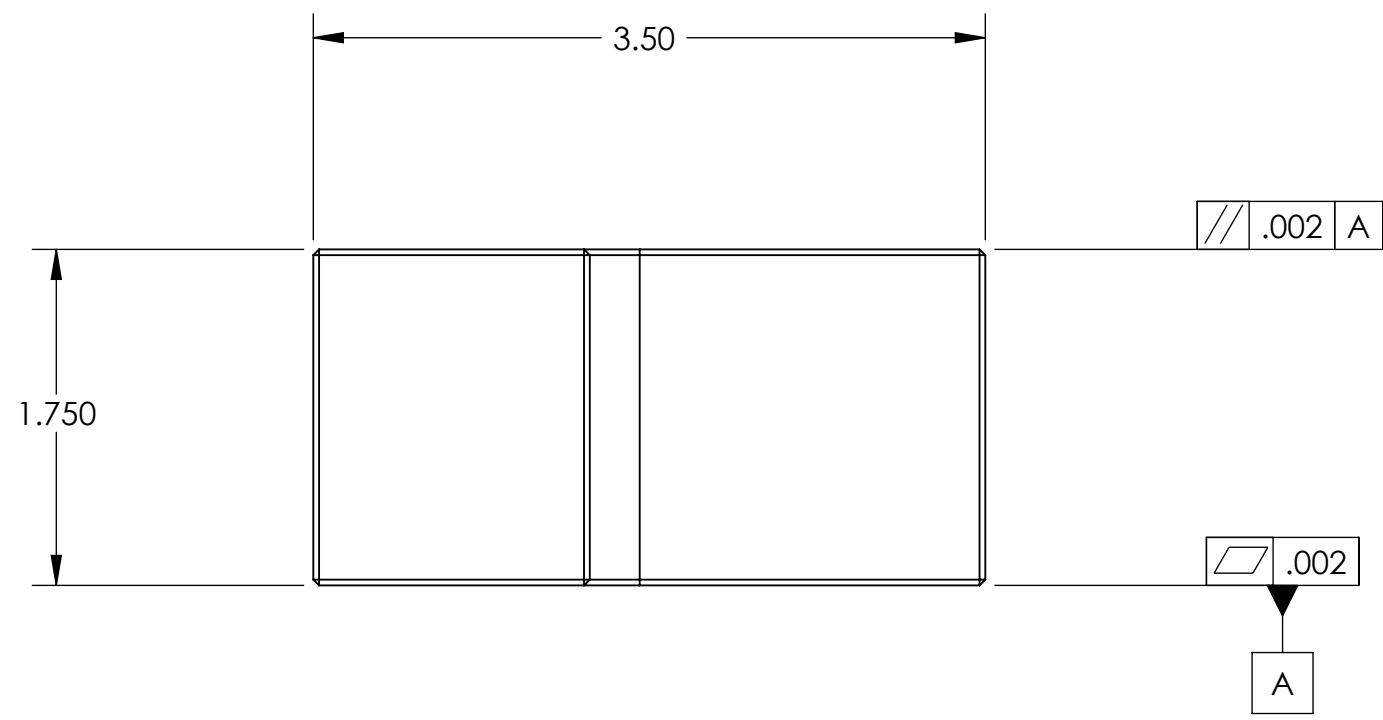


REVISION HISTORY				
REV	DATE	ECO	APPROVAL	DESCRIPTION
V1 / A	31 Jul 2007	1070	D. Senders	Release for Enhanced LIGO.
V2	2 Apr 2009		A. Stein	Release for Advanced LIGO. Added chamfers, all edges. Added c'sinks.



MACHINING NOTES:

- 1) MACHINE ALL SURFACES TO REMOVE OXIDES AND MILL FINISH. ABRASIVE REMOVAL TECHNIQUES (OTHER THAN DRESSED BLANCHARD GRINDING) ARE NOT ACCEPTABLE.
- 2) ALL MACHINING FLUIDS MUST BE WATER SOLUBLE AND FREE OF SULFUR, CHLORINE, AND SILICONE, SUCH AS CINCINNATI MILACRON CIMTECH 410.
- 3) THOROUGHLY CLEAN PART TO REMOVE ALL OIL, GREASE, DIRT, AND CHIPS.
- 4) WHERE INDICATED, MECHANICALLY SCRIBE, STAMP, OR ENGRAVE THE FOLLOWING INFORMATION AS SHOWN BELOW: **PART NUMBER-REVISION** (AND **TYPE** IF INDICATED), FOLLOWED ON THE NEXT LINE WITH A UNIQUE 3-DIGIT **SERIAL NUMBER** STARTING AT 001 FOR THE FIRST PART AND INCREMENTING THEREAFTER. USE 0.38" TALL CHARACTERS UNLESS PART SIZE DICTATES SMALLER.

D071132-V2  
S/N - ###

POST-MACHINING NOTES:

- P1) CLEAN TO LIGO STANDARDS, CLASS A.

APPROVALS		DATE	UNLESS OTHERWISE SPECIFIED: DIMENSIONS ARE IN INCHES DECIMAL TOLERANCES: .XX ±.015 .XXX ±.005 ANG TOL: ± 1" SURFACE ROUGHNESS: 63	ORIGINAL DESIGN BY:	
ENGINEERING (HPD): D. Senders		7/31/2007		MODIFIED BY:	
QUALITY (HPD): C. Danaher		7/31/2007	REMOVE ALL SHARP EDGES. LEAVE .005 X 45° MIN CHAMFER, OR .005 MIN RADIUS.	DESCRIPTION:	<b>Actuator L-Bracket, Horiz</b>
MATERIAL: 6061-T6 Al			THIS PRINT & THE EMBEDDED CAD MODEL ARE THE DOCUMENTATION OF RECORD, UNLESS OTHERWISE SPECIFIED. ALL DIMENSIONS IN THE MODEL ARE BASIC, WITH TOLERANCES GIVEN BY:	P/N:	<b>D071132</b>
FINISH: None			.010 A B C	CONFIG:	-
MASS: 1.1 lbs				CAD FILE NAME:	D071132_Actuator_L-Bracket-Horiz
				PROJECT:	HAM ISI, Advanced LIGO
				SIZE	C
				SCALE: 1:1	DRAWN BY: Dave Senders (HPD)
				REV	V2
				SHEET 1 OF 1	DATE PRINTED: 4/2/2009