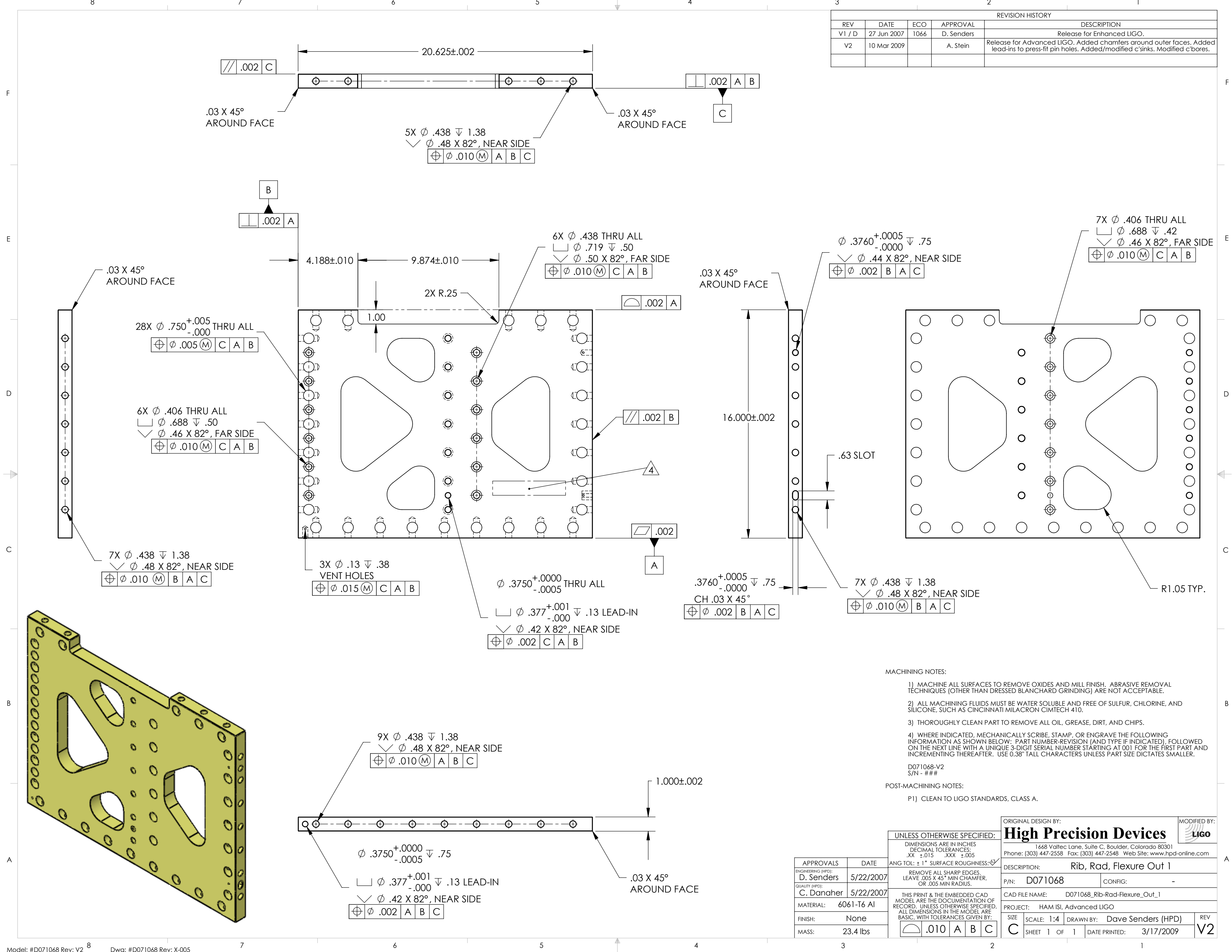


REVISION HISTORY				
REV	DATE	ECO	APPROVAL	DESCRIPTION
V1 / D	27 Jun 2007	1066	D. Senders	Release for Enhanced LIGO.
V2	10 Mar 2009		A. Stein	Release for Advanced LIGO. Added chamfers around outer faces. Added lead-ins to press-fit pin holes. Added/modified c/sinks. Modified c'bores.



MACHINING NOTES:

- 1) MACHINE ALL SURFACES TO REMOVE OXIDES AND MILL FINISH. ABRASIVE REMOVAL TECHNIQUES (OTHER THAN DRESSED BLANCHARD GRINDING) ARE NOT ACCEPTABLE.
- 2) ALL MACHINING FLUIDS MUST BE WATER SOLUBLE AND FREE OF SULFUR, CHLORINE, AND SILICONE, SUCH AS CINCINNATI MILACRON CIMTECH 410.
- 3) THOROUGHLY CLEAN PART TO REMOVE ALL OIL, GREASE, DIRT, AND CHIPS.
- 4) WHERE INDICATED, MECHANICALLY SCRIBE, STAMP, OR ENGRAVE THE FOLLOWING INFORMATION AS SHOWN BELOW: PART NUMBER-REVISION (AND TYPE IF INDICATED), FOLLOWED ON THE NEXT LINE WITH A UNIQUE 3-DIGIT SERIAL NUMBER STARTING AT 001 FOR THE FIRST PART AND INCREMENTING THEREAFTER. USE 0.38" TALL CHARACTERS UNLESS PART SIZE DICTATES SMALLER.

D071068-V2
S/N - ###

POST-MACHINING NOTES:

- P1) CLEAN TO LIGO STANDARDS, CLASS A.

UNLESS OTHERWISE SPECIFIED:

DIMENSIONS ARE IN INCHES
DECIMAL TOLERANCES:
.XX ±.015 .XXX ±.005
ANG TOL: ± 1° SURFACE ROUGHNESS:
REMOVE ALL SHARP EDGES.
LEAVE .005 X 45° MIN CHAMFER,
OR .005 MIN RADIUS.

THIS PRINT & THE EMBEDDED CAD MODEL ARE THE DOCUMENTATION OF RECORD, UNLESS OTHERWISE SPECIFIED. ALL DIMENSIONS IN THE MODEL ARE BASIC, WITH TOLERANCES GIVEN BY:

$\overline{\text{A}}$	$\overline{\text{B}}$	$\overline{\text{C}}$
.010	A	B C

ORIGINAL DESIGN BY: **High Precision Devices**
1468 Valtec Lane, Suite C, Boulder, Colorado 80301
Phone: (303) 447-2558 Fax: (303) 447-2548 Web Site: www.hpd-online.com

DESCRIPTION:	Rib, Rad, Flexure Out 1		
P/N:	D071068	CONFIG:	-
CAD FILE NAME:	D071068_Rib-Rad-Flexure_Out_1		
PROJECT:	HAM ISI, Advanced LIGO		
SIZE	SCALE: 1:4	DRAWN BY:	Dave Senders (HPD)
SHEET 1	OF 1	DATE PRINTED:	3/17/2009
REV	V2		

APPROVALS	DATE
ENGINEERING (HPD): D. Senders	5/22/2007
QUALITY (HPD): C. Danaher	5/22/2007
MATERIAL:	6061-T6 Al
FINISH:	None
MASS:	23.4 lbs