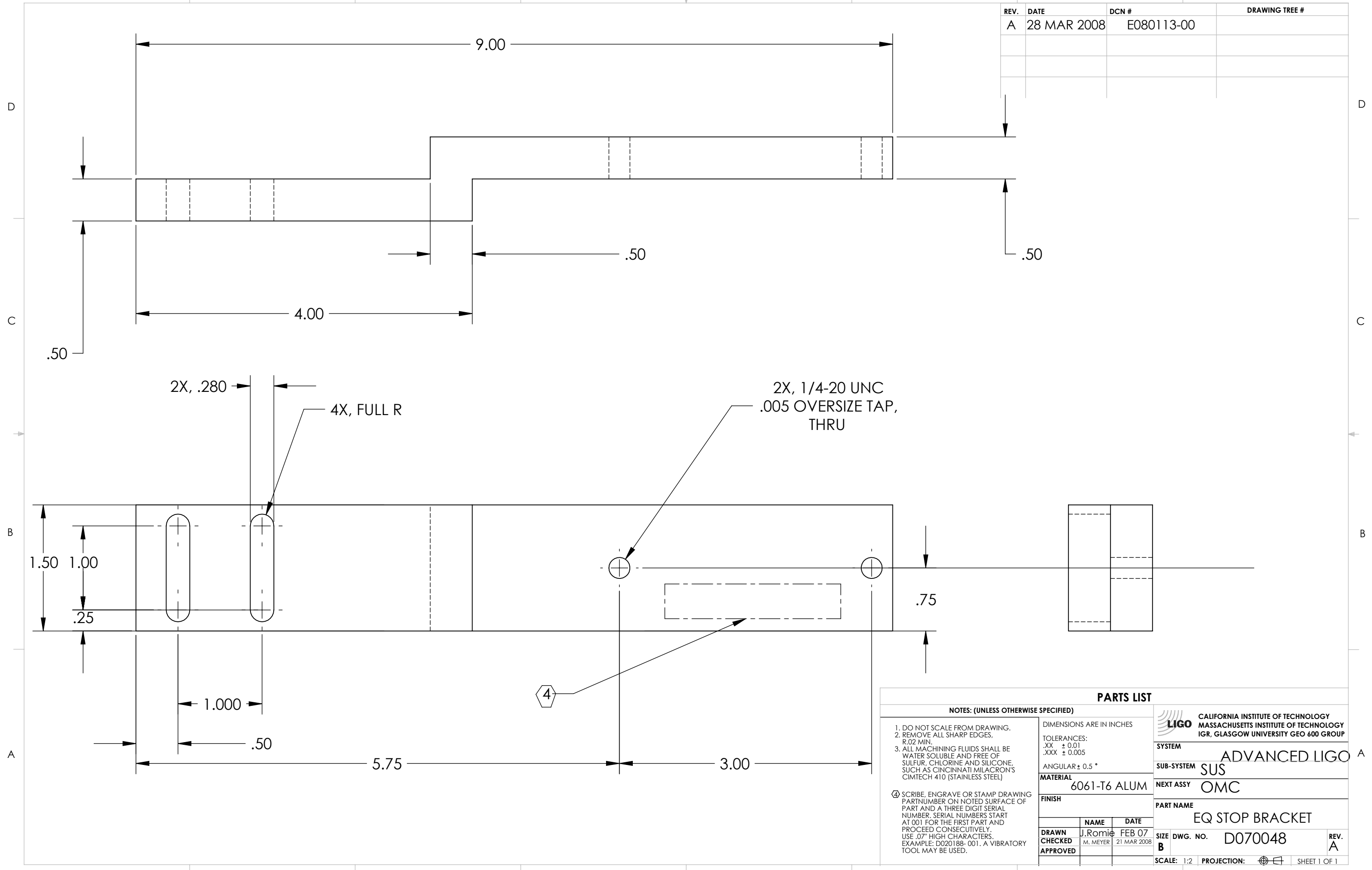


REV.	DATE	DCN #	DRAWING TREE #
A	28 MAR 2008	E080113-00	



NOTES: (UNLESS OTHERWISE SPECIFIED)

- DO NOT SCALE FROM DRAWING.
- REMOVE ALL SHARP EDGES, R.02 MIN.
- ALL MACHINING FLUIDS SHALL BE WATER SOLUBLE AND FREE OF SULFUR, CHLORINE AND SILICONE, SUCH AS CINCINNATI MILACRON'S CIMTECH 410 (STAINLESS STEEL)

④ SCRIBE, ENGRAVE OR STAMP DRAWING PART NUMBER ON NOTED SURFACE OF PART AND A THREE DIGIT SERIAL NUMBER. SERIAL NUMBERS START AT 001 FOR THE FIRST PART AND PROCEED CONSECUTIVELY. USE .07" HIGH CHARACTERS. EXAMPLE: D020188-001. A VIBRATORY TOOL MAY BE USED.

DIMENSIONS ARE IN INCHES
 TOLERANCES:
 .XX ± 0.01
 .XXX ± 0.005
 ANGULAR ± 0.5°

PARTS LIST

MATERIAL		6061-T6 ALUM
FINISH		
DRAWN	J. Romie	FEB 07
CHECKED	M. MEYER	21 MAR 2008
APPROVED		

SYSTEM: ADVANCED LIGO
 SUB-SYSTEM: SUS
 NEXT ASSY: OMC
 PART NAME: EQ STOP BRACKET
 SIZE DWG. NO.: D070048
 SCALE: 1:2 PROJECTION: SHEET 1 OF 1